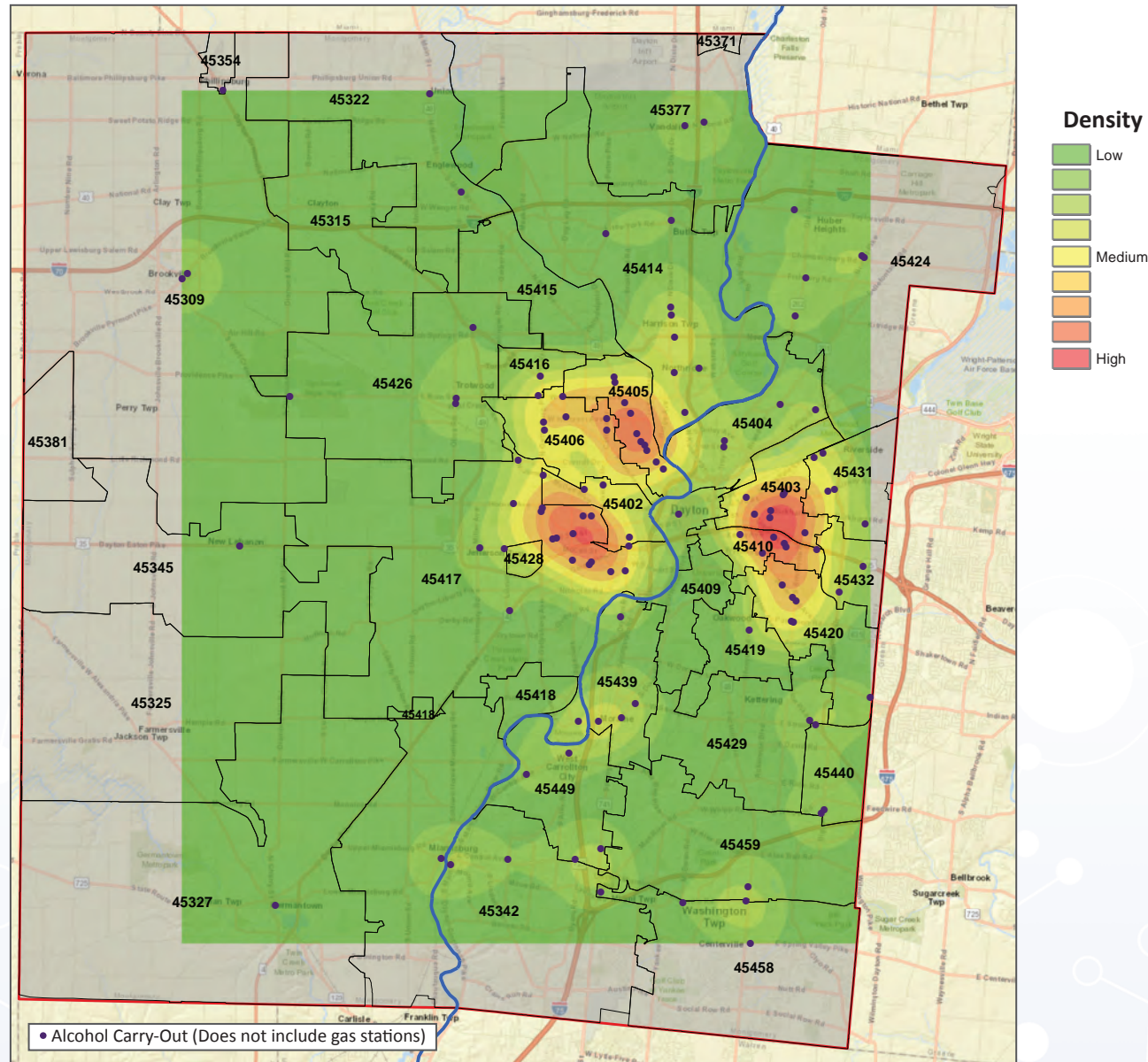


ALCOHOL RETAIL STORES



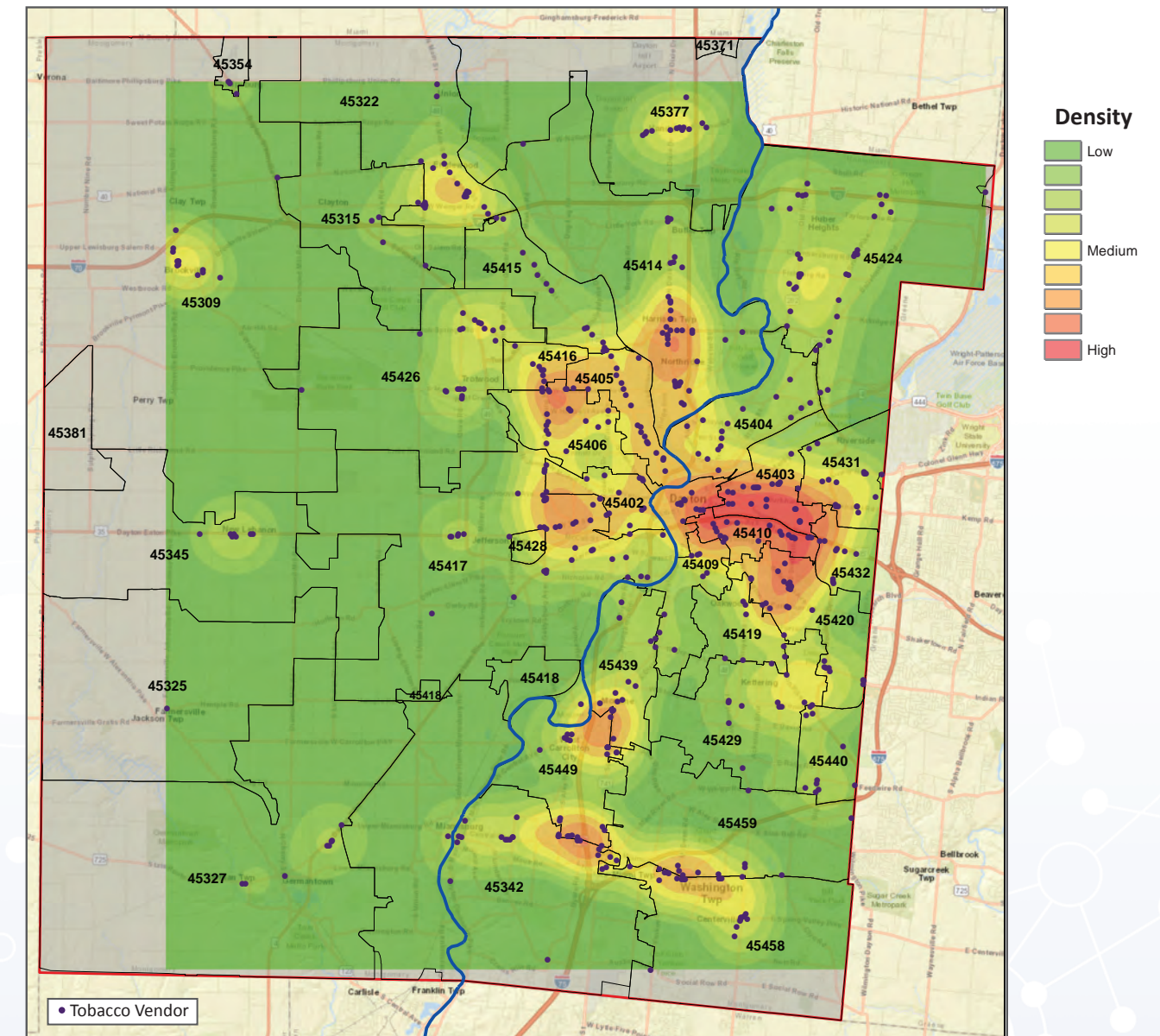
TOBACCO VENDORS

Density of Alcohol Retail Carry-Out Locations Montgomery County, 2019



Source: Division of Liquor Control, Ohio Department of Commerce

Density of Tobacco Vendors Montgomery County, 2018



Source: Environmental Health, PHDMC

SDOH SOCIAL DETERMINANTS OF HEALTH:

Communities with higher poverty rates and larger minority populations (i.e., Black and Hispanic populations) have a higher concentration of alcohol retail stores and tobacco vendors. These neighborhoods are subjected to the negative social consequences associated with these stores such as physical violence, noise, property damage, and disorderly conduct. Strong social cohesion and community involvement are needed in these neighborhoods to work collectively to address zoning laws that permit a high density of alcohol and tobacco vendors (CDC, 2017).

