



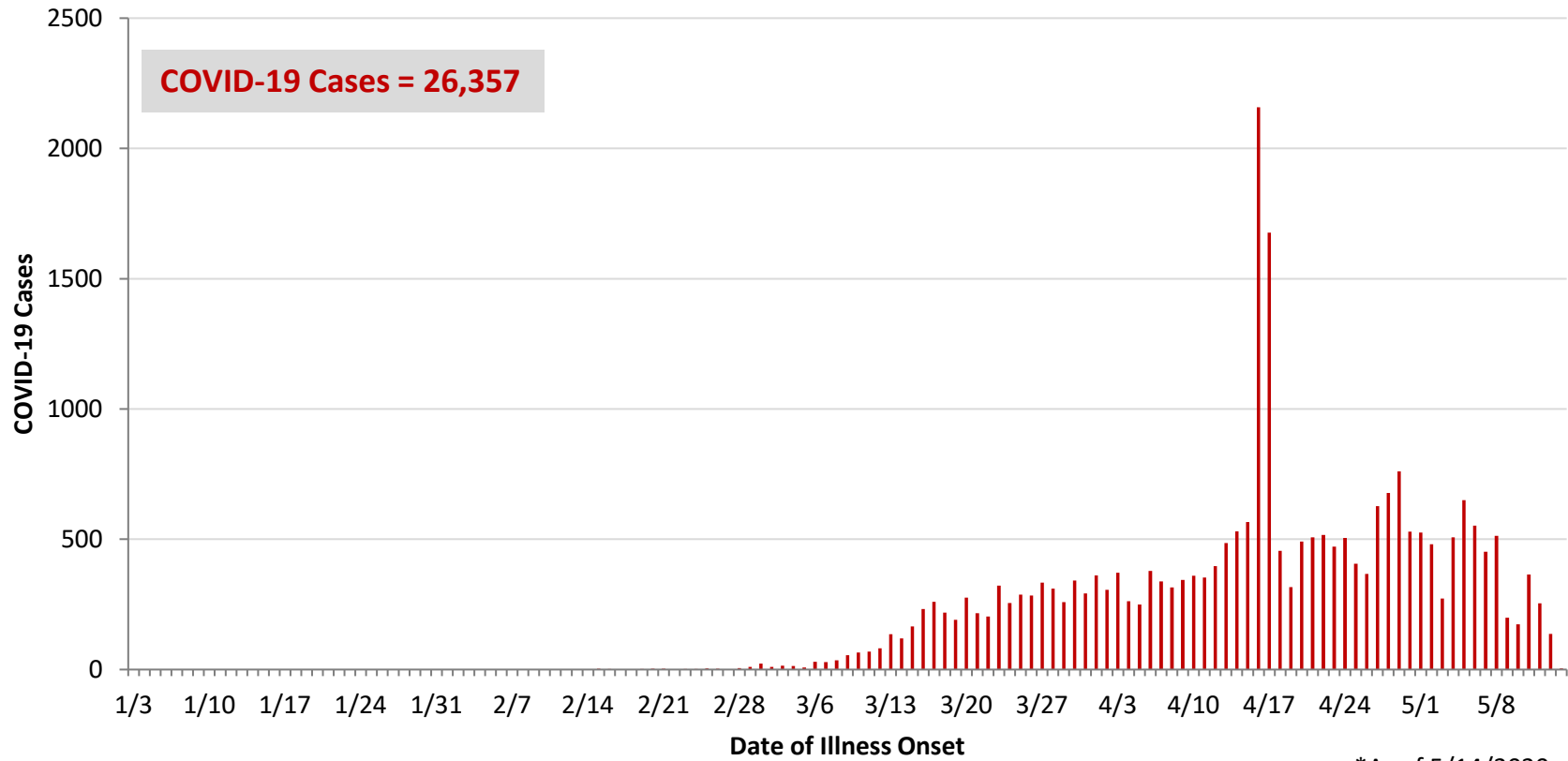
**Ohio, West Central Ohio (WCO), and Montgomery County COVID-19 Cases
As of 5/14/20**

Source: The State of Ohio COVID-19 Dashboard, Ohio Department of Health

Ohio:

Preliminary COVID-19 Cases Ohio, As of 5/14/2020		
Sex	# Cases	% Cases
Female	12,030	46%
Male	14,162	54%
Unknown	165	1%
Total	26,357	100%
Age Group		
Age Group	# Cases	% Cases
0-19	910	3%
20-29	3,425	13%
30-39	4,234	16%
40-49	4,208	16%
50-59	4,485	17%
60-69	3,729	14%
70-79	2,426	9%
80+	2,914	11%
Unknown	26	0%
Total	26,357	100%
Hospitalized		
Hospitalized	4,718	17.9%
Deaths		
Deaths	1,534	5.8%
Age Group		
Age Group	Deaths	% of Deaths
0-19	0	0%
20-29	4	0%
30-39	10	1%
40-49	23	1%
50-59	83	5%
60-69	219	14%
70-79	393	26%
80+	802	52%
Total	1,534	100%

**PRELIMINARY COVID-19 Cases by Date of Illness Onset
Ohio, 1/3/20 - 5/14/20***

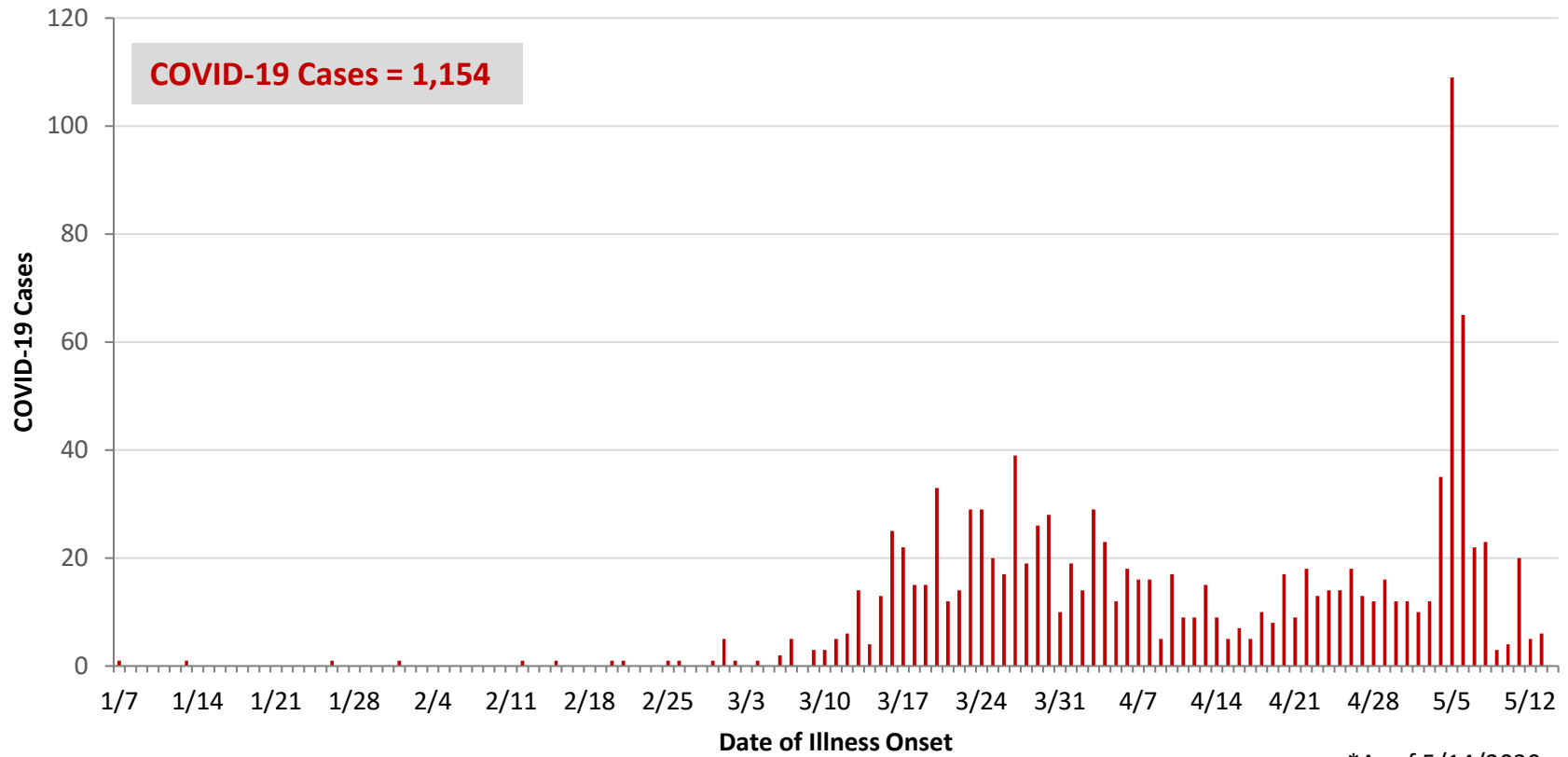


*As of 5/14/2020

WCO:

Preliminary COVID-19 Cases West Central Ohio, As of 5/14/2020		
County	# Cases	% Cases
Champaign	20	2%
Clark	122	11%
Darke	95	8%
Greene	70	6%
Miami	317	27%
Montgomery	468	41%
Preble	28	2%
Shelby	34	3%
Total	1,154	100%
Sex		
Sex	# Cases	% Cases
Female	625	54%
Male	464	40%
Unknown	65	6%
Total	1,154	100%
Age Group		
Age Group	# Cases	% Cases
0-19	48	4%
20-29	133	12%
30-39	160	14%
40-49	143	12%
50-59	214	19%
60-69	191	17%
70-79	119	10%
80+	146	13%
Total	1,154	100%
Hospitalized	257	22.3%
Deaths	68	5.9%
Age Group		
Age Group	Deaths	% of Deaths
0-19	0	0%
20-29	0	0%
30-39	1	1%
40-49	1	1%
50-59	4	6%
60-69	10	15%
70-79	12	18%
80+	40	59%
Total	68	100%

**PRELIMINARY COVID-19 Cases by Date of Illness Onset
West Central Ohio, 1/7/20 - 5/14/20***



*As of 5/14/2020

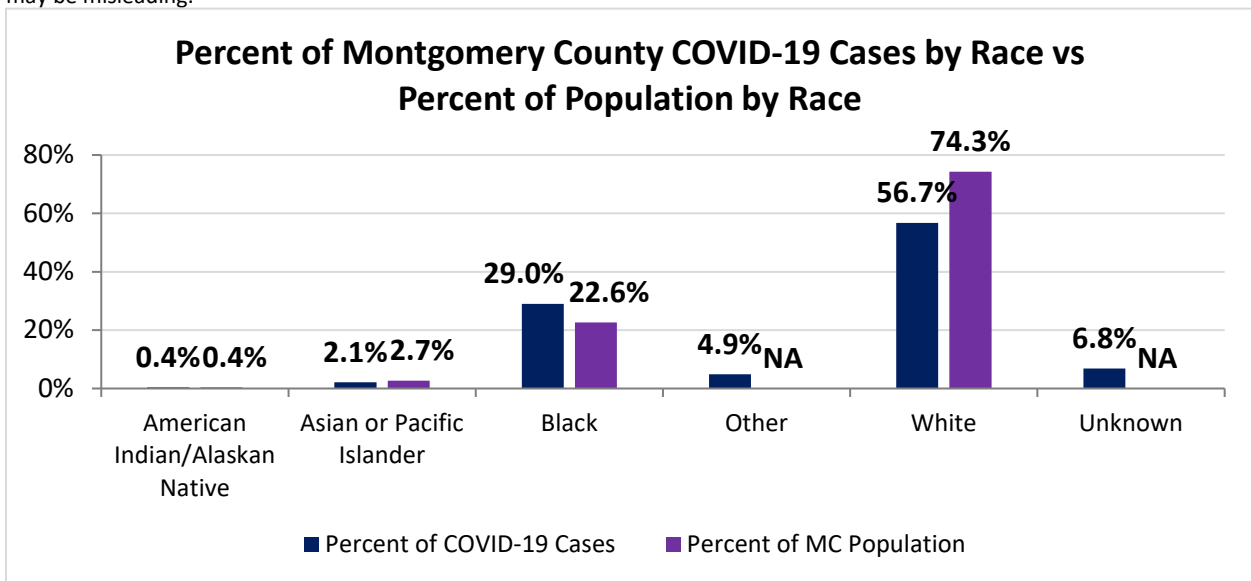
Montgomery County:

Preliminary COVID-19 Cases, Montgomery County, As of 5/14/2020		
Sex	# Cases	% Cases
Female	245	52%
Male	216	46%
Unknown	7	1%
Total	468	100%
Age Group		
Age Group	# Cases	% Cases
0-19	22	5%
20-29	53	11%
30-39	70	15%
40-49	68	15%
50-59	106	23%
60-69	91	19%
70-79	37	8%
80+	21	4%
Total	468	100%
Hospitalized		
Hospitalized	136	29.1%
Deaths		
Deaths	11	2.4%
Age Group		
Age Group	Deaths	% of Deaths
0-19	0	0%
20-29	0	0%
30-39	0	0%
40-49	1	9%
50-59	1	9%
60-69	3	27%
70-79	0	0%
80+	6	55%
Total	11	100%

Source: Ohio Disease Reporting System, ODH

Montgomery County COVID-19 Cases by Race As of 5/14/20			
Race	Count	Percent	Rate
American Indian/Alaskan Native (AI/AN)*	2	0%	93.1
Asian	10	2%	70.3
Black	136	29%	113.0
Other	23	5%	0.0
White	266	57%	67.2
Unknown	32	7%	0.0
Total	469	100%	88.1

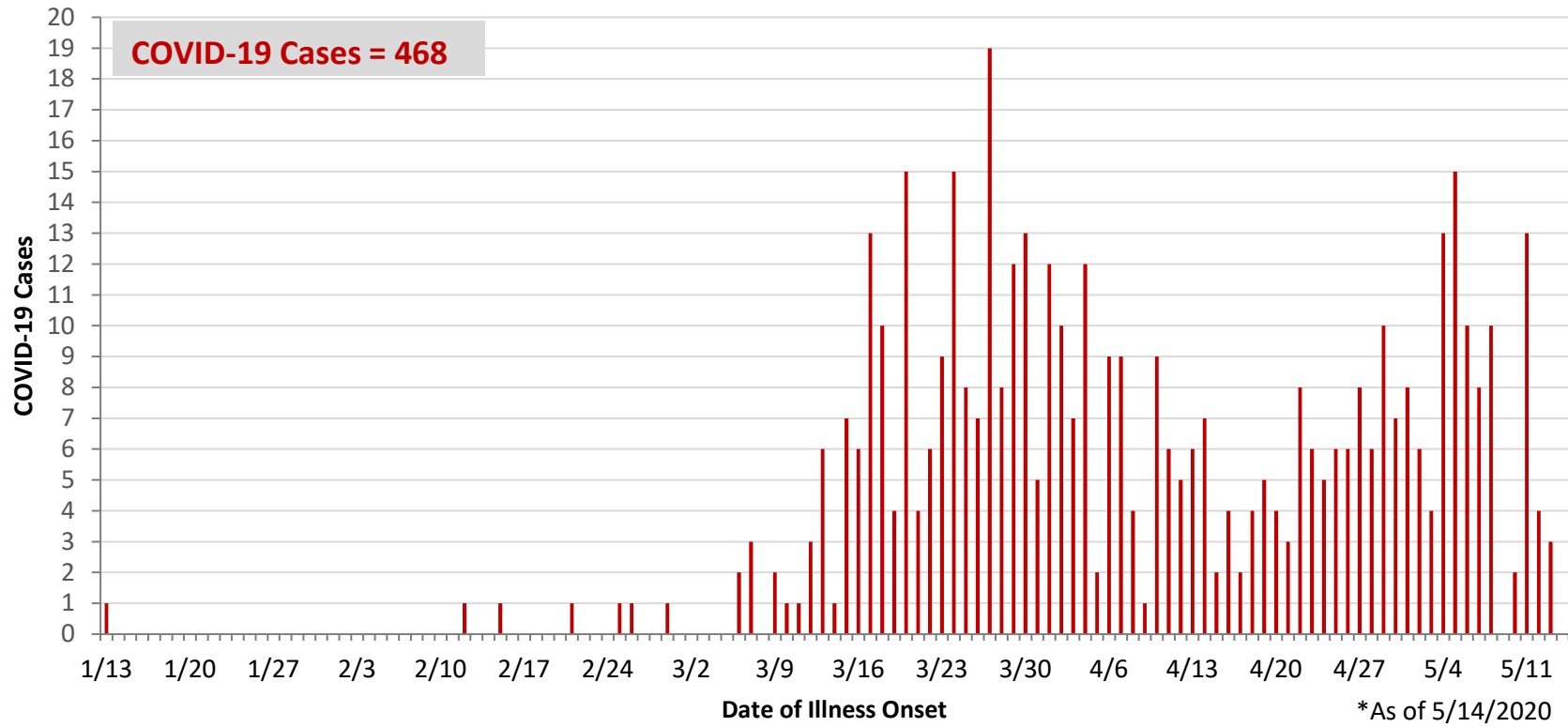
*Note. AI/ANs account for 0.4% of Montgomery County's population, and therefore, rates for this population will be large and may be misleading.



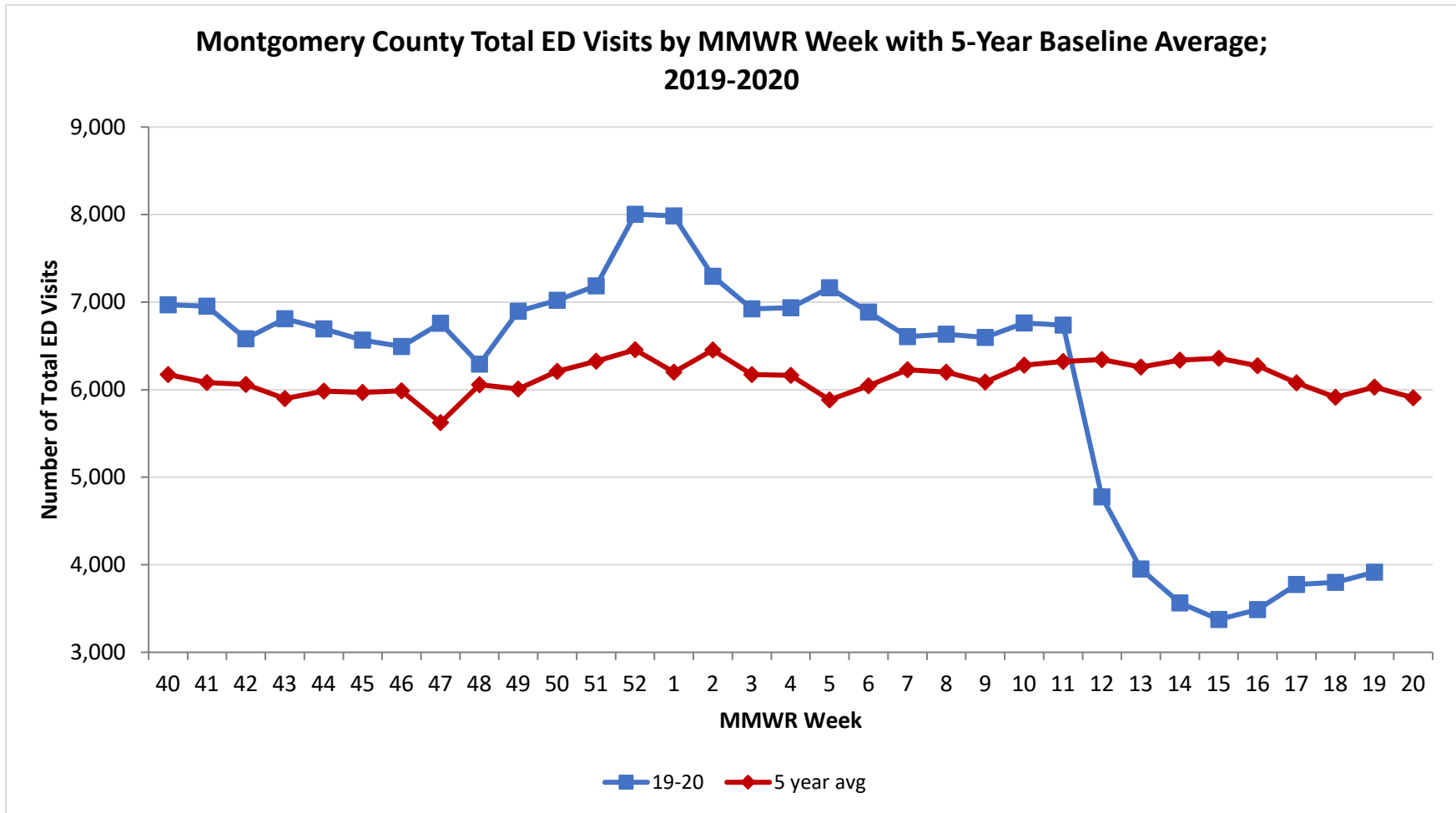
Montgomery County COVID-19 Cases by Health Care Worker Status As of 5/14/20		
Status	#	%
Health Care Worker	97	21%
Non-Health Care Worker	304	65%
Unknown	68	14%
Total	469	100%

Montgomery County COVID-19 Cases Age Range As of 5/14/20	
Stat	Age in Years
Age Range	1 - 95
Average Age	49.2
Median Age	51.0

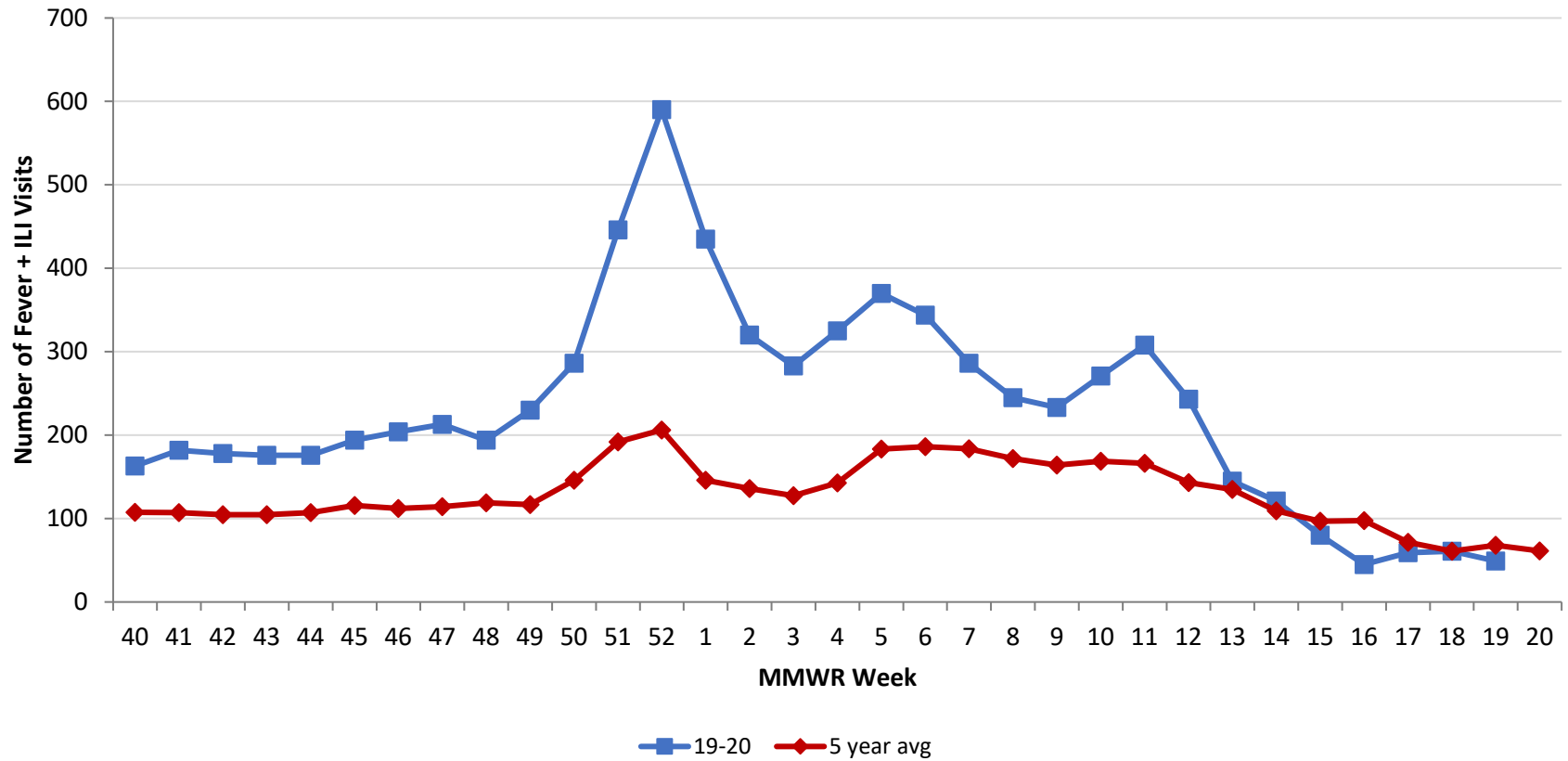
**PRELIMINARY COVID-19 Cases by Date of Illness Onset
Montgomery County, 1/13/20 - 5/14/20***



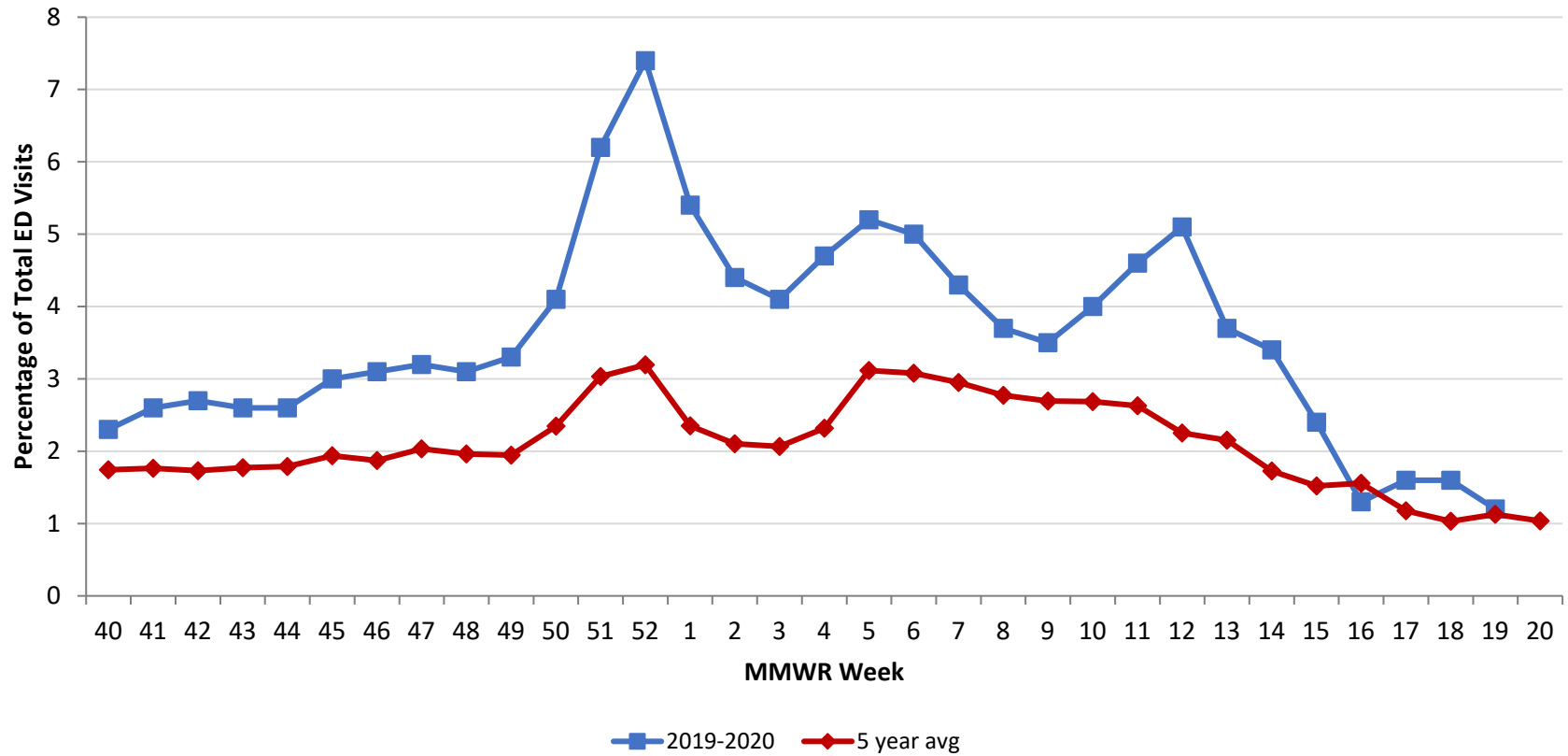
Source: EpiCenter Syndromic Surveillance, Health Monitoring Systems



Montgomery County Fever + ILI Specified ED Visits by MMWR Week with 5-Year Baseline Average; 2019-2020



Montgomery County Fever + ILI Specified ED Visits by MMWR Week with 5-Year Baseline Average; 2019-2020



# Total Visits		
MMWR Week	19-20	5-Year Average
40	6,970	6,173.4
41	6,955	6,082.8
42	6,581	6,061.6
43	6,810	5,899.6
44	6,694	5,982.4
45	6,567	5,968.0
46	6,494	5,987.6
47	6,760	5,622.8
48	6,292	6,056.8
49	6,895	6,008.0
50	7,022	6,209.8
51	7,185	6,324.4
52	8,005	6,456.0
1	7,986	6,200.8
2	7,297	6,452.4
3	6,924	6,172.9
4	6,935	6,164.0
5	7,164	5,881.8
6	6,888	6,045.0
7	6,605	6,226.8
8	6,633	6,200.6
9	6,597	6,088.2
10	6,763	6,279.6
11	6,738	6,321.6
12	4,775	6,345.0
13	3,592	6,259.8
14	3,565	6,337.4
15	3,376	6,359.8
16	3,489	6,274.0
17	3,774	6,079.8
18	3,798	5,913.4
19	3,915	6,029.6
20	-	5,908.8

# Fever + ILI Visits		
MMWR Week	19-20	5-Year Average
40	163	107.6
41	182	107.2
42	178	104.8
43	176	104.6
44	176	107.0
45	194	115.6
46	204	112.0
47	213	114.4
48	194	118.8
49	230	116.8
50	286	145.8
51	446	191.8
52	590	206.2
1	435	145.8
2	320	135.8
3	283	127.4
4	325	142.8
5	370	183.2
6	344	186.2
7	286	183.8
8	245	171.8
9	233	164.0
10	271	168.6
11	308	166.2
12	243	143.0
13	145	134.8
14	121	109.4
15	80	96.8
16	45	97.6
17	59	71.6
18	61	61.0
19	49	68.0
20	-	61.2

% Fever + ILI Visits		
MMWR Week	19-20	5-Year Average
40	2.3	1.7
41	2.6	1.8
42	2.7	1.7
43	2.6	1.8
44	2.6	1.8
45	3.0	1.9
46	3.1	1.9
47	3.2	2.0
48	3.1	2.0
49	3.3	1.9
50	4.1	2.3
51	6.2	3.0
52	7.4	3.2
1	5.4	2.4
2	4.4	2.1
3	4.1	2.1
4	4.7	2.3
5	5.2	3.1
6	5	3.1
7	4.3	3.0
8	3.7	2.8
9	3.5	2.7
10	4	2.7
11	4.6	2.6
12	5.1	2.3
13	3.7	2.2
14	3.4	1.7
15	2.4	1.5
16	1.3	1.6
17	1.6	1.2
18	1.6	1.0
19	1.2	1.1
20	-	1.0