



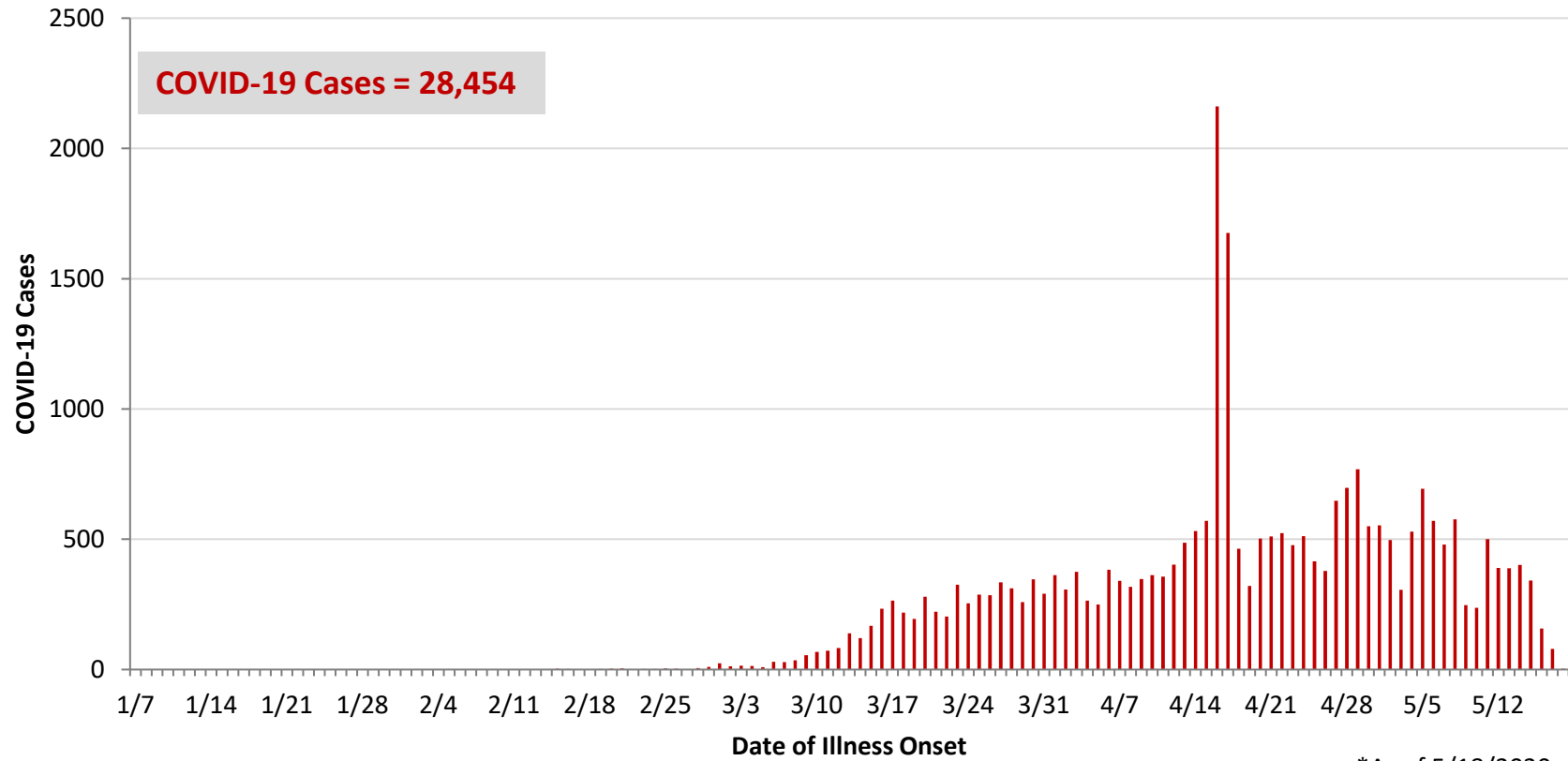
**Ohio, West Central Ohio (WCO), and Montgomery County COVID-19 Cases
As of 5/18/20**

Source: The State of Ohio COVID-19 Dashboard, Ohio Department of Health

Ohio:

Preliminary COVID-19 Cases Ohio, As of 5/18/2020		
Sex	# Cases	% Cases
Female	13,087	46%
Male	15,196	53%
Unknown	171	1%
Total	28,454	100%
Age Group		
Age Group	# Cases	% Cases
0-19	1,067	4%
20-29	3,753	13%
30-39	4,565	16%
40-49	4,532	16%
50-59	4,818	17%
60-69	3,974	14%
70-79	2,573	9%
80+	3,152	11%
Unknown	20	0%
Total	28,454	100%
Hospitalized		
Hospitalized	4,998	17.6%
Deaths		
Deaths	1,657	5.8%
Age Group		
Age Group	Deaths	% of Deaths
0-19	0	0%
20-29	5	0%
30-39	12	1%
40-49	24	1%
50-59	91	5%
60-69	240	14%
70-79	419	25%
80+	866	52%
Total	1,657	100%

**PRELIMINARY COVID-19 Cases by Date of Illness Onset
Ohio, 1/7/20 - 5/18/20***

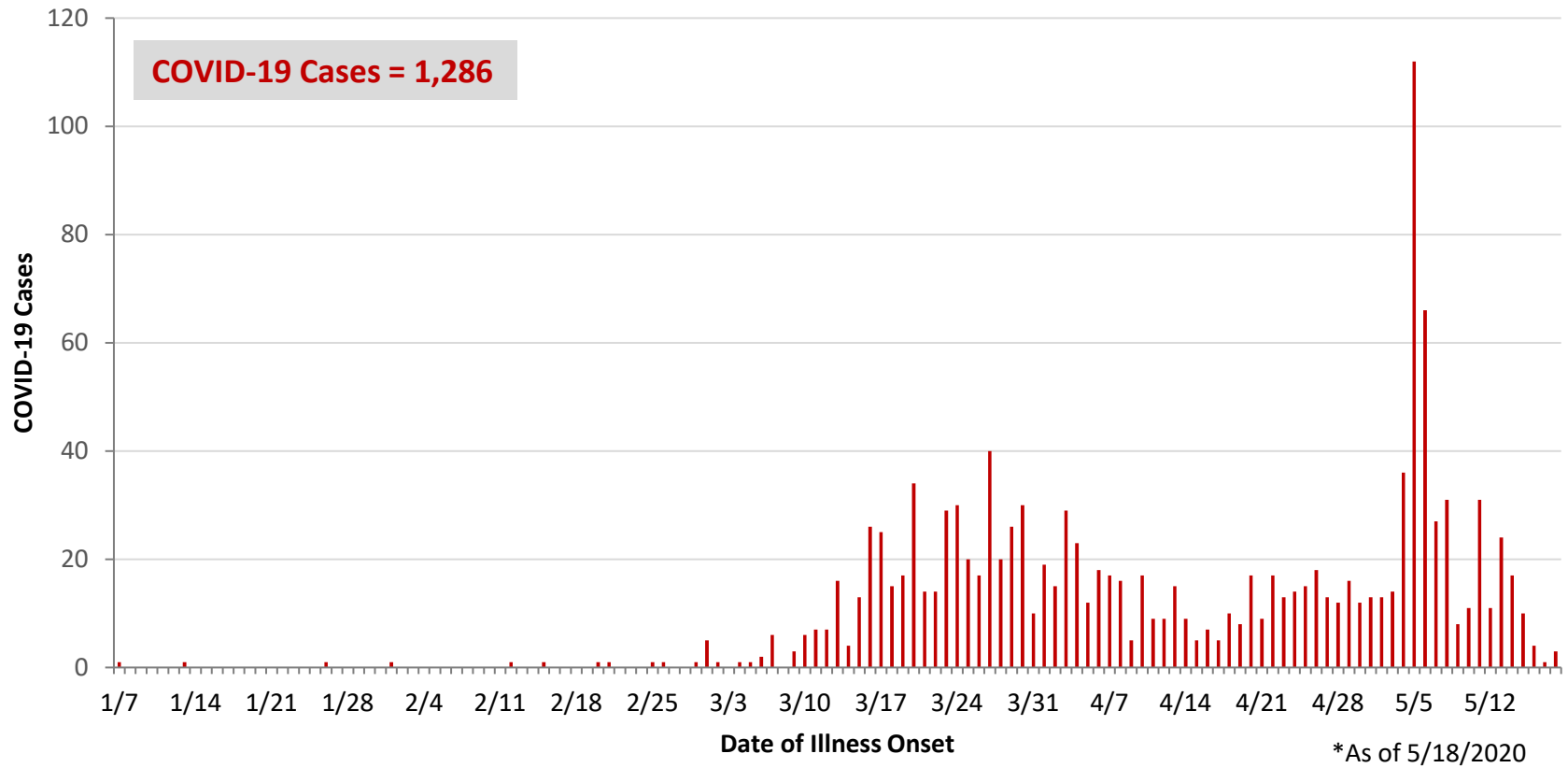


*As of 5/18/2020

WCO:

Preliminary COVID-19 Cases West Central Ohio, As of 5/18/2020		
County	# Cases	% Cases
Champaign	23	2%
Clark	148	12%
Darke	121	9%
Greene	78	6%
Miami	332	26%
Montgomery	520	40%
Preble	30	2%
Shelby	34	3%
Total	1,286	100%
Sex		
Sex	# Cases	% Cases
Female	692	54%
Male	527	41%
Unknown	67	5%
Total	1,286	100%
Age Group		
Age Group	# Cases	% Cases
0-19	57	4%
20-29	152	12%
30-39	185	14%
40-49	166	13%
50-59	241	19%
60-69	206	16%
70-79	123	10%
80+	156	12%
Total	1,286	100%
Hospitalized	270	21.0%
Deaths	70	5.4%
Age Group		
Age Group	Deaths	% of Deaths
0-19	0	0%
20-29	0	0%
30-39	2	3%
40-49	1	1%
50-59	5	7%
60-69	10	14%
70-79	12	17%
80+	40	57%
Total	70	100%

**PRELIMINARY COVID-19 Cases by Date of Illness Onset
West Central Ohio, 1/7/20 - 5/18/20***



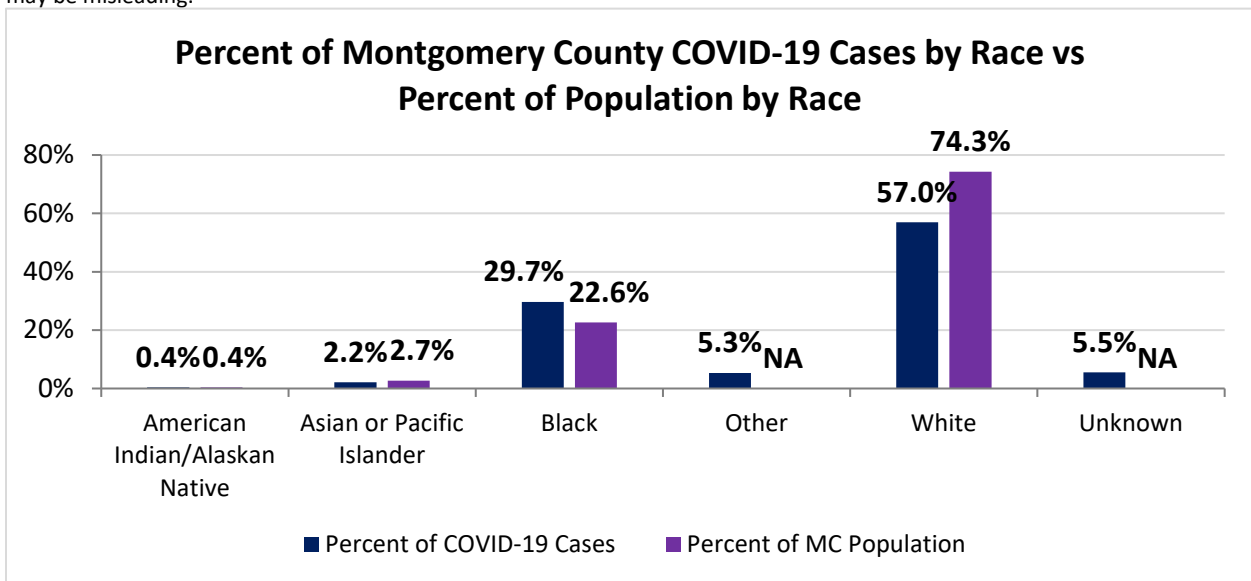
Montgomery County:

Preliminary COVID-19 Cases, Montgomery County, As of 5/18/2020		
Sex	# Cases	% Cases
Female	276	53%
Male	238	46%
Unknown	6	1%
Total	520	100%
Age Group		
Age Group	# Cases	% Cases
0-19	27	5%
20-29	60	12%
30-39	77	15%
40-49	80	15%
50-59	119	23%
60-69	95	18%
70-79	38	7%
80+	24	5%
Total	520	100%
Hospitalized		
Hospitalized	147	28.3%
Deaths		
Deaths	13	2.5%
Age Group		
Age Group	Deaths	% of Deaths
0-19	0	0%
20-29	0	0%
30-39	1	8%
40-49	1	8%
50-59	2	15%
60-69	3	23%
70-79	0	0%
80+	6	46%
Total	13	100%

Source: Ohio Disease Reporting System, ODH

Montgomery County COVID-19 Cases by Race As of 5/18/20			
Race	Count	Percent	Rate
American Indian/Alaskan Native (AI/AN)*	2	0.4%	93.1
Asian	11	2.2%	77.3
Black	151	29.7%	125.5
Other	27	5.3%	0.0
White	290	57.0%	73.3
Unknown	28	5.5%	0.0
Total	509	100%	95.6

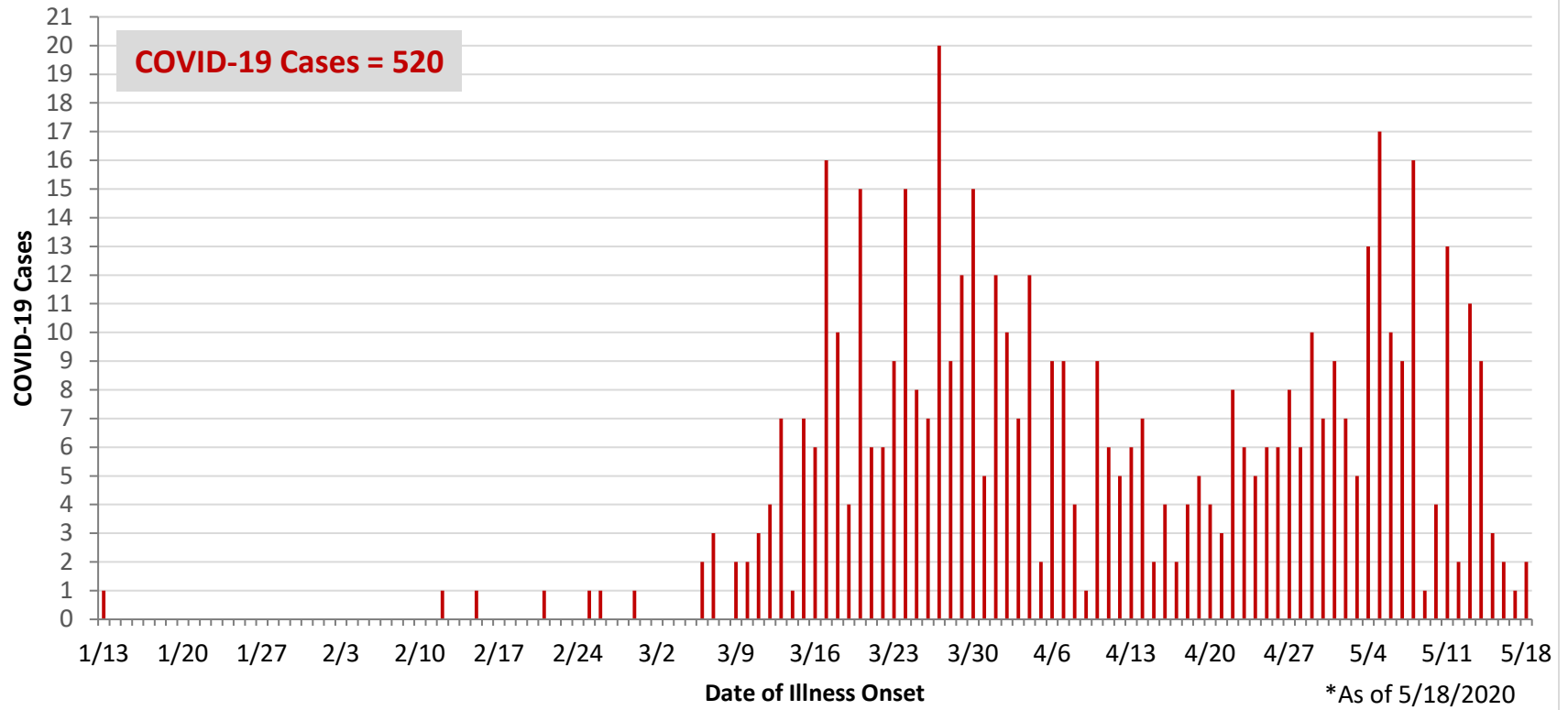
*Note. AI/ANs account for 0.4% of Montgomery County's population, and therefore, rates for this population will be large and may be misleading.



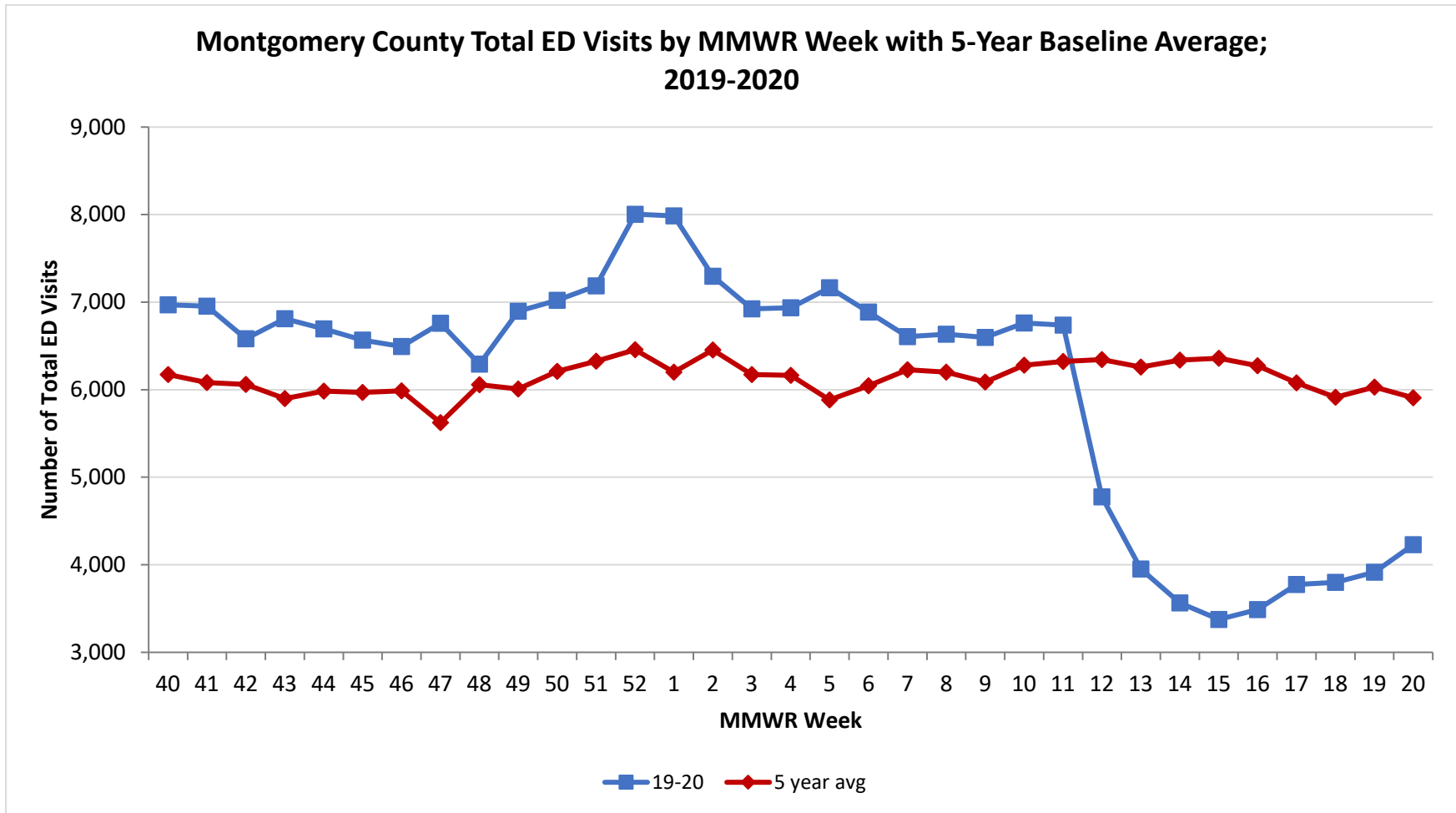
Montgomery County COVID-19 Cases by Health Care Worker Status As of 5/18/20		
Status	#	%
Health Care Worker	105	21%
Non-Health Care Worker	338	66%
Unknown	66	13%
Total	509	100%

Montgomery County COVID-19 Cases Age Range As of 5/18/20	
Stat	Age in Years
Age Range	1 - 95
Average Age	49.1
Median Age	51.0

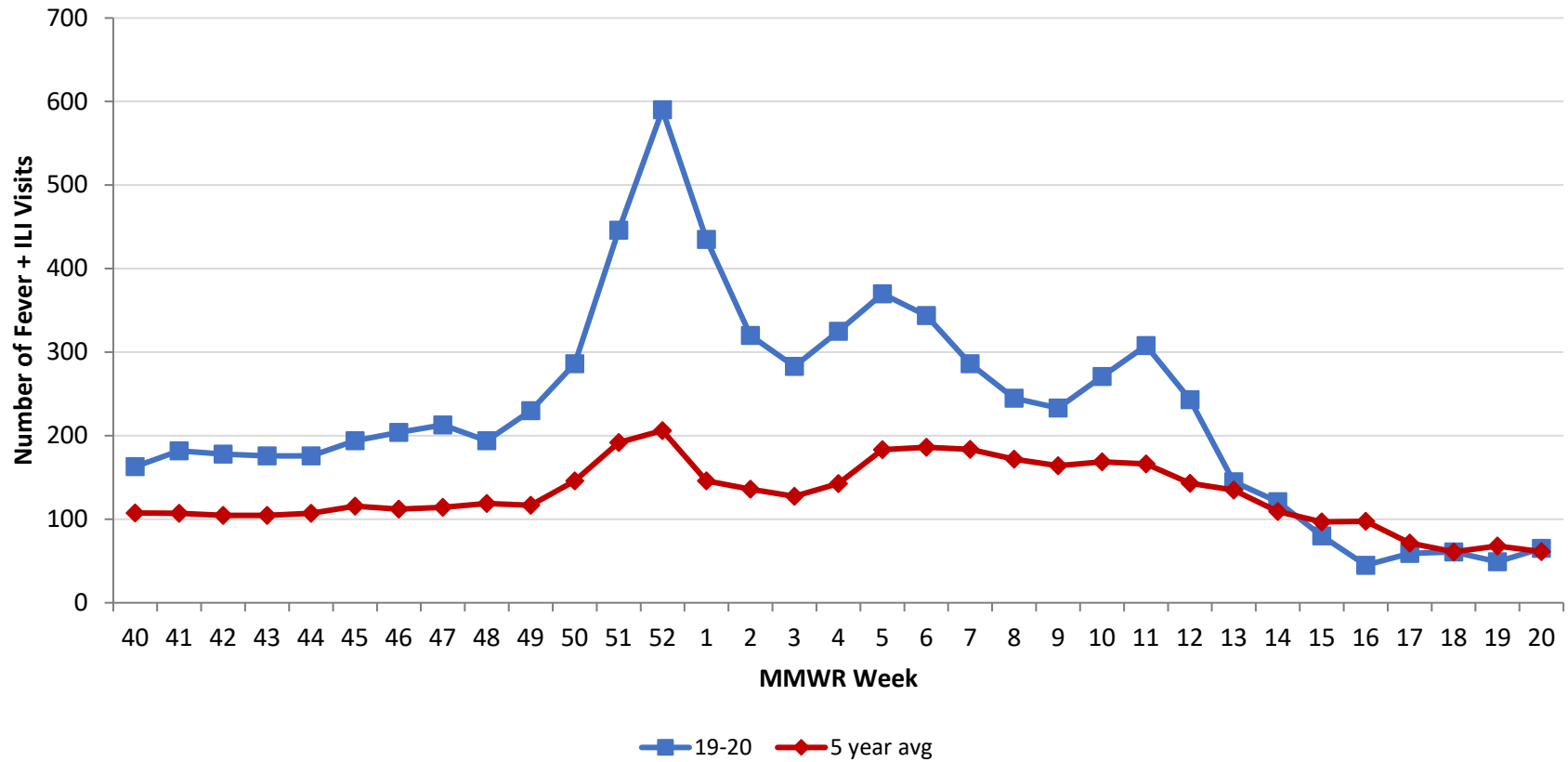
**PRELIMINARY COVID-19 Cases by Date of Illness Onset
Montgomery County, 1/13/20 - 5/18/20***



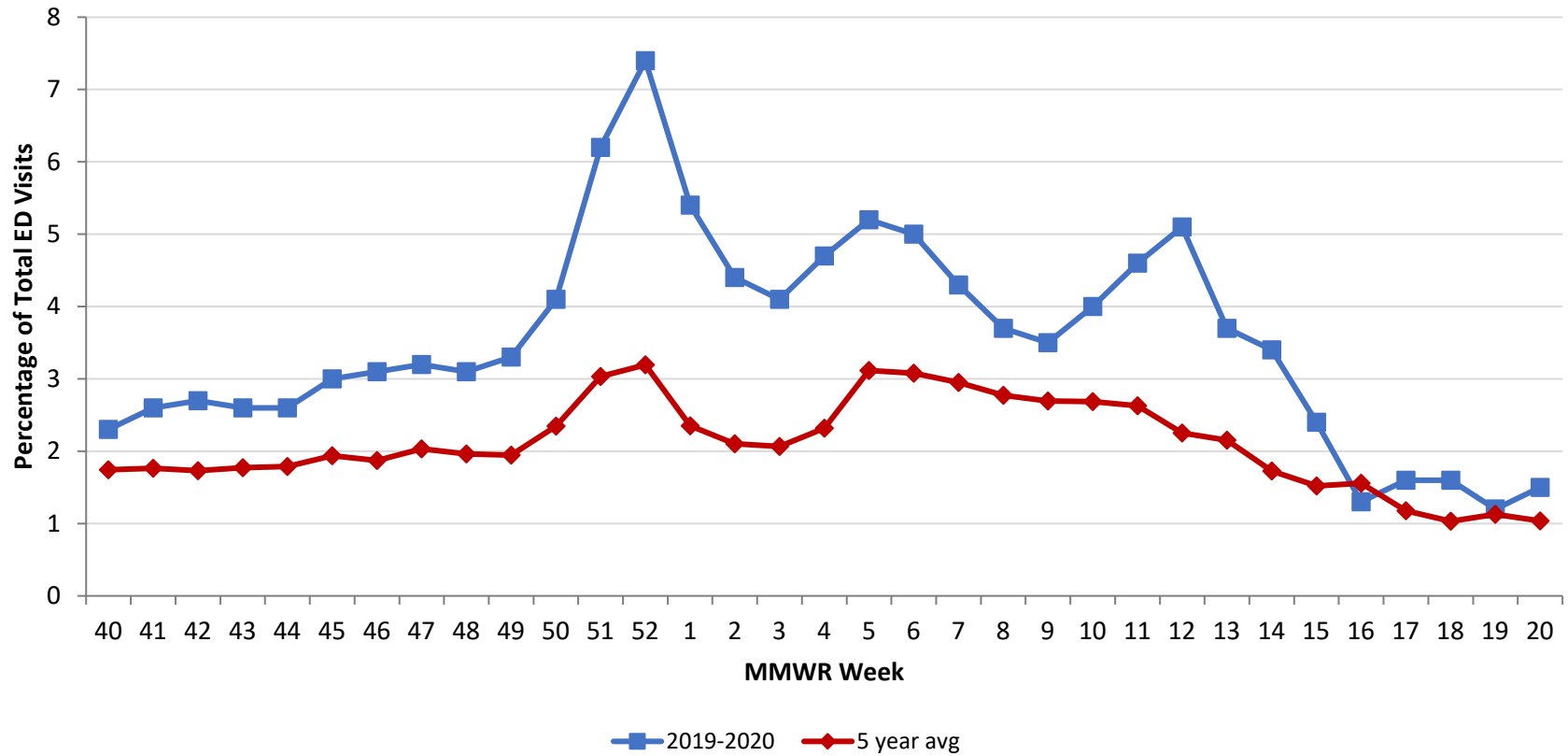
Source: EpiCenter Syndromic Surveillance, Health Monitoring Systems



Montgomery County Fever + ILI Specified ED Visits by MMWR Week with 5-Year Baseline Average; 2019-2020



Montgomery County Fever + ILI Specified ED Visits by MMWR Week with 5-Year Baseline Average; 2019-2020



# Total Visits		
MMWR Week	19-20	5-Year Average
40	6,970	6,173.4
41	6,955	6,082.8
42	6,581	6,061.6
43	6,810	5,899.6
44	6,694	5,982.4
45	6,567	5,968.0
46	6,494	5,987.6
47	6,760	5,622.8
48	6,292	6,056.8
49	6,895	6,008.0
50	7,022	6,209.8
51	7,185	6,324.4
52	8,005	6,456.0
1	7,986	6,200.8
2	7,297	6,452.4
3	6,924	6,172.9
4	6,935	6,164.0
5	7,164	5,881.8
6	6,888	6,045.0
7	6,605	6,226.8
8	6,633	6,200.6
9	6,597	6,088.2
10	6,763	6,279.6
11	6,738	6,321.6
12	4,775	6,345.0
13	3,592	6,259.8
14	3,565	6,337.4
15	3,376	6,359.8
16	3,489	6,274.0
17	3,774	6,079.8
18	3,798	5,913.4
19	3,915	6,029.6
20	4,231	5,908.8

# Fever + ILI Visits		
MMWR Week	19-20	5-Year Average
40	163	107.6
41	182	107.2
42	178	104.8
43	176	104.6
44	176	107.0
45	194	115.6
46	204	112.0
47	213	114.4
48	194	118.8
49	230	116.8
50	286	145.8
51	446	191.8
52	590	206.2
1	435	145.8
2	320	135.8
3	283	127.4
4	325	142.8
5	370	183.2
6	344	186.2
7	286	183.8
8	245	171.8
9	233	164.0
10	271	168.6
11	308	166.2
12	243	143.0
13	145	134.8
14	121	109.4
15	80	96.8
16	45	97.6
17	59	71.6
18	61	61.0
19	49	68.0
20	65	61.2

% Fever + ILI Visits		
MMWR Week	19-20	5-Year Average
40	2.3	1.7
41	2.6	1.8
42	2.7	1.7
43	2.6	1.8
44	2.6	1.8
45	3.0	1.9
46	3.1	1.9
47	3.2	2.0
48	3.1	2.0
49	3.3	1.9
50	4.1	2.3
51	6.2	3.0
52	7.4	3.2
1	5.4	2.4
2	4.4	2.1
3	4.1	2.1
4	4.7	2.3
5	5.2	3.1
6	5	3.1
7	4.3	3.0
8	3.7	2.8
9	3.5	2.7
10	4	2.7
11	4.6	2.6
12	5.1	2.3
13	3.7	2.2
14	3.4	1.7
15	2.4	1.5
16	1.3	1.6
17	1.6	1.2
18	1.6	1.0
19	1.2	1.1
20	1.5	1.0