



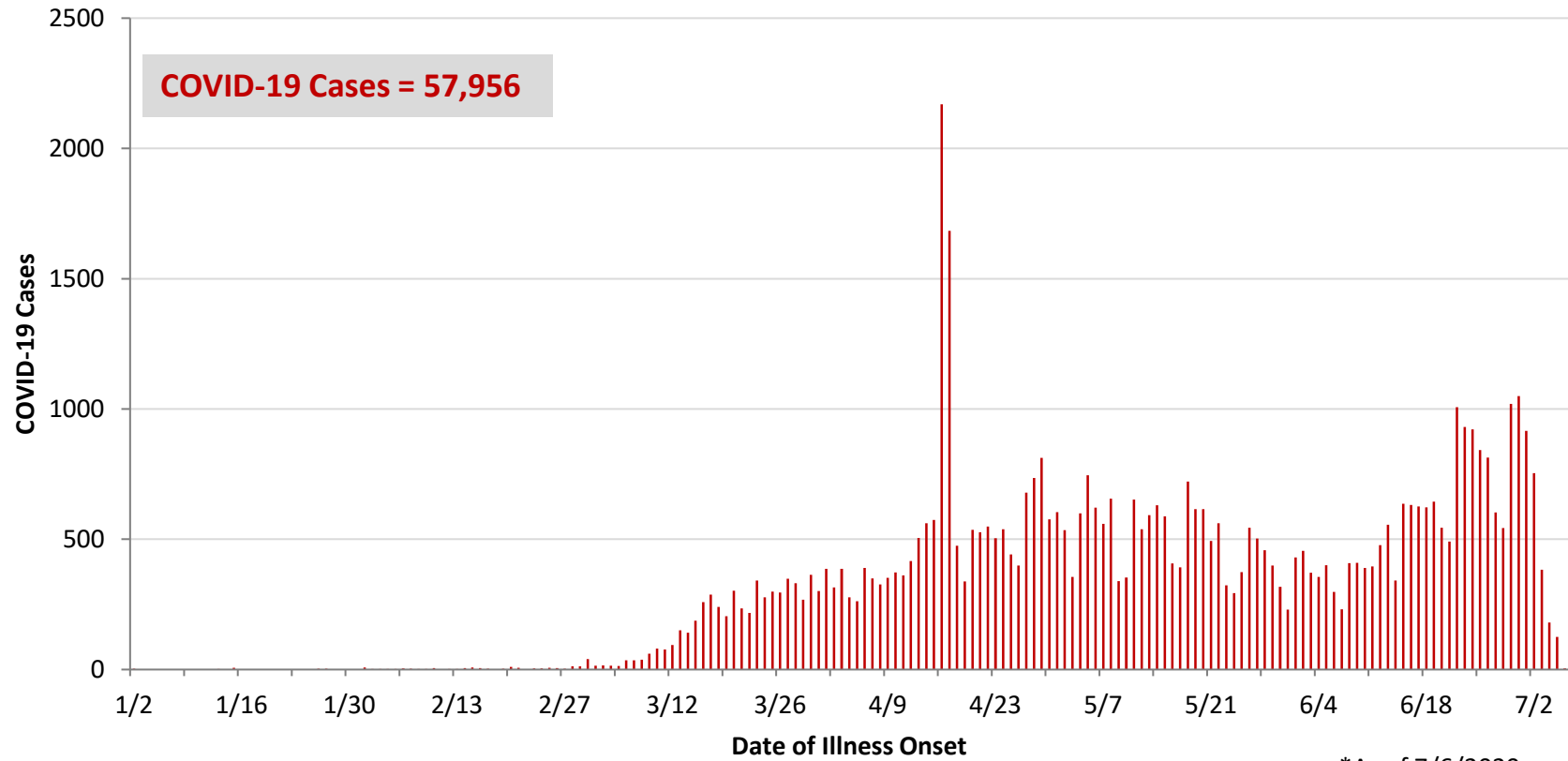
**Ohio, West Central Ohio (WCO), and Montgomery County COVID-19 Cases  
As of 7/6/20**

**Source:** The State of Ohio COVID-19 Dashboard, Ohio Department of Health

**Ohio:**

<b>Preliminary COVID-19 Cases Ohio, As of 7/6/2020</b>		
<b>Sex</b>	<b># Cases</b>	<b>% Cases</b>
Female	28,766	50%
Male	28,700	50%
Unknown	490	1%
<b>Total</b>	<b>57,956</b>	<b>100%</b>
<b>Age Group</b>		
<b>Age Group</b>	<b># Cases</b>	<b>% Cases</b>
0-19	4,047	7%
20-29	10,337	18%
30-39	9,832	17%
40-49	8,692	15%
50-59	8,791	15%
60-69	6,814	12%
70-79	4,446	8%
80+	4,942	9%
Unknown	55	0%
<b>Total</b>	<b>57,956</b>	<b>100%</b>
<b>Hospitalized</b>		
Hospitalized	8,249	14.2%
<b>Deaths</b>		
Deaths	2,927	5.1%
<b>Age Group</b>		
<b>Age Group</b>	<b>Deaths</b>	<b>% of Deaths</b>
0-19	1	0%
20-29	11	0%
30-39	18	1%
40-49	45	2%
50-59	174	6%
60-69	416	14%
70-79	717	24%
80+	1,545	53%
<b>Total</b>	<b>2,927</b>	<b>100%</b>

**PRELIMINARY COVID-19 Cases by Date of Illness Onset  
Ohio, 1/2/20 - 7/6/20\***

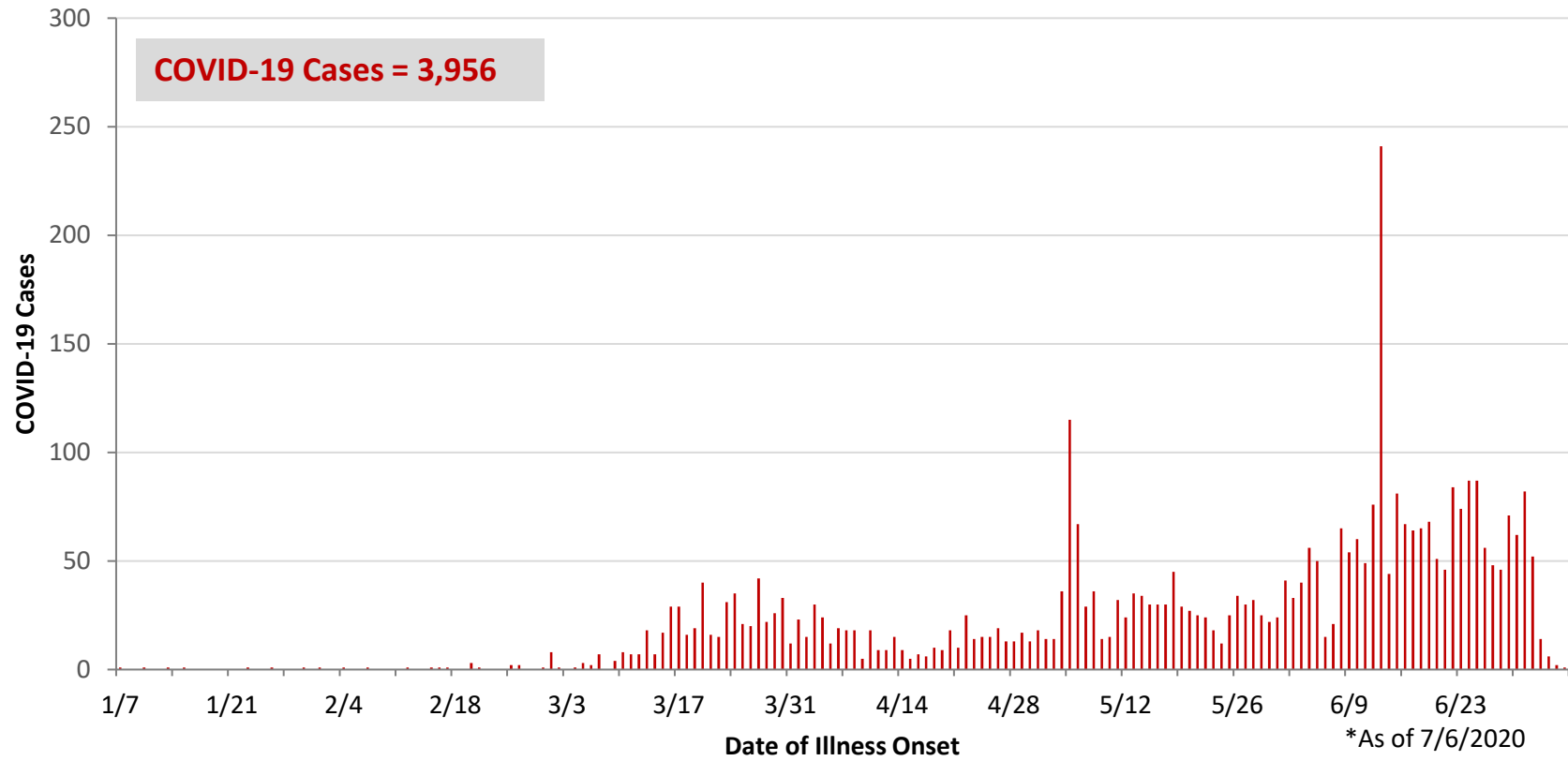


\*As of 7/6/2020

WCO:

Preliminary COVID-19 Cases West Central Ohio, As of 7/6/2020		
County	# Cases	% Cases
Champaign	40	1%
Clark	766	19%
Darke	251	6%
Greene	258	7%
Miami	466	12%
Montgomery	2,034	51%
Preble	73	2%
Shelby	68	2%
<b>Total</b>	<b>3,956</b>	<b>100%</b>
Sex		
Sex	# Cases	% Cases
Female	2,093	53%
Male	1,749	44%
Unknown	114	3%
<b>Total</b>	<b>3,956</b>	<b>100%</b>
Age Group		
Age Group	# Cases	% Cases
0-19	374	9%
20-29	762	19%
30-39	693	18%
40-49	552	14%
50-59	566	14%
60-69	463	12%
70-79	274	7%
80+	272	7%
<b>Total</b>	<b>3,956</b>	<b>100%</b>
Hospitalized	532	13.4%
Deaths	107	2.7%
Age Group		
Age Group	Deaths	% of Deaths
0-19	0	0%
20-29	1	1%
30-39	2	2%
40-49	2	2%
50-59	6	6%
60-69	17	16%
70-79	17	16%
80+	62	58%
<b>Total</b>	<b>107</b>	<b>100%</b>

**PRELIMINARY COVID-19 Cases by Date of Illness Onset  
West Central Ohio, 1/7/20 - 7/6/20\***



**Montgomery County:**

<b>Preliminary COVID-19 Cases Montgomery County, As of 7/6/2020</b>		
<b>Sex</b>	<b># Cases</b>	<b>% Cases</b>
Female	1,105	54%
Male	904	44%
Unknown	25	1%
<b>Total</b>	<b>2,034</b>	<b>100%</b>
<b>Age Group</b>		
<b>Age Group</b>	<b># Cases</b>	<b>% Cases</b>
0-19	216	11%
20-29	374	18%
30-39	388	19%
40-49	306	15%
50-59	305	15%
60-69	229	11%
70-79	126	6%
80+	90	4%
<b>Total</b>	<b>2,034</b>	<b>100%</b>
<b>Hospitalized</b>		
Hospitalized	311	15.3%
<b>Deaths</b>		
Deaths	27	1.3%
<b>Age Group</b>		
<b>Age Group</b>	<b>Deaths</b>	<b>% of Deaths</b>
0-19	0	0%
20-29	1	4%
30-39	1	4%
40-49	2	7%
50-59	3	11%
60-69	8	30%
70-79	2	7%
80+	10	37%
<b>Total</b>	<b>27</b>	<b>100%</b>

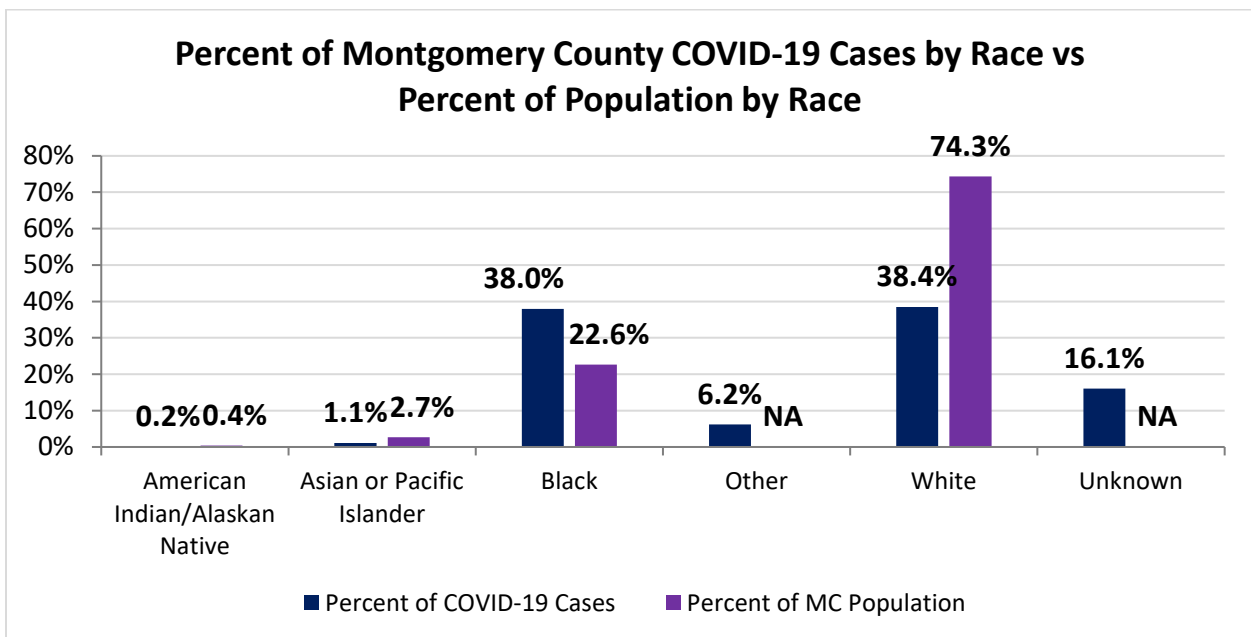
Source: Ohio Disease Reporting System, ODH

Montgomery County COVID-19 Cases by Race As of 7/6/20				
Race	Count	Percent	Rate	Rate Interpretation**
American Indian/Alaskan Native (AI/AN)*	4	0.2%	186.2	1 in 716
Asian	21	1.1%	147.6	1 in 678
Black	751	38.0%	624.0	1 in 160
Other	123	6.2%	NA	NA
White	760	38.4%	192.1	1 in 521
Unknown	318	16.1%	NA	NA
<b>Total</b>	<b>1,977</b>	<b>100%</b>	<b>371.4</b>	<b>1 in 269</b>

\*Note. AI/ANs account for 0.4% of Montgomery County’s population, and therefore, rates for this population will be large and may be misleading.

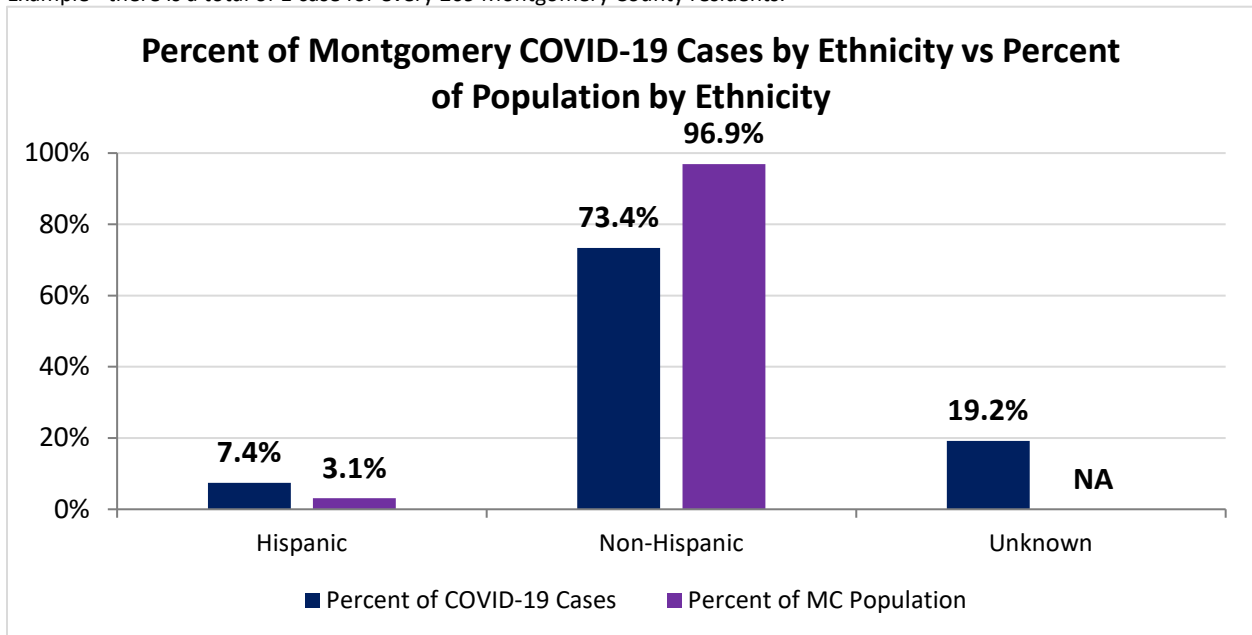
\*\*Rate interpretation represents the number of cases for the given population.

Example - there is a total of 1 case for every 269 Montgomery County residents.



<b>Montgomery County COVID-19 Cases by Ethnicity As of 7/6/20</b>				
<b>Ethnicity</b>	<b>Count</b>	<b>Percent</b>	<b>Rate</b>	<b>Rate Interpretation**</b>
Hispanic	147	7.4%	893.1	1 in 112
Non-Hispanic	1,451	73.4%	281.3	1 in 356
Unknown	379	19.2%	NA	NA
<b>Total</b>	<b>1,977</b>	<b>100%</b>	<b>371.4</b>	<b>1 in 269</b>

\*\*Rate interpretation represents the number of cases for the given population.  
 Example - there is a total of 1 case for every 269 Montgomery County residents.



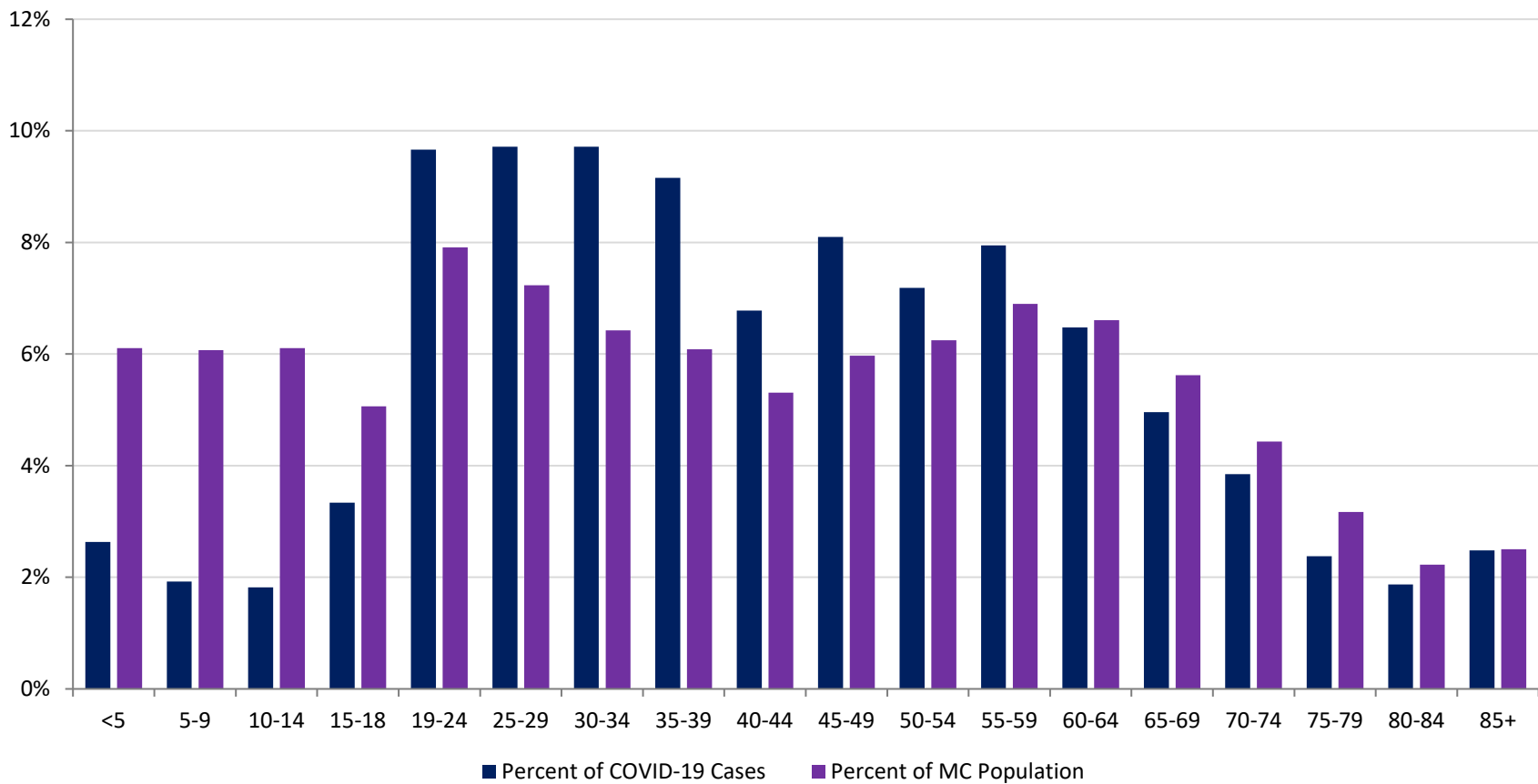
<b>Montgomery County COVID-19 Cases by Health Care Worker Status As of 7/6/20</b>		
<b>Status</b>	<b>#</b>	<b>%</b>
Health Care Worker	267	13.5%
Non-Health Care Worker	1,240	62.7%
Unknown	470	23.8%
<b>Total</b>	<b>1,977</b>	<b>100%</b>

<b>Montgomery County COVID-19 Cases Age Range As of 7/6/20</b>	
<b>Stat</b>	<b>Age in Years</b>
Age Range	<1 - 104
Average Age	42.8
Median Age	41.0

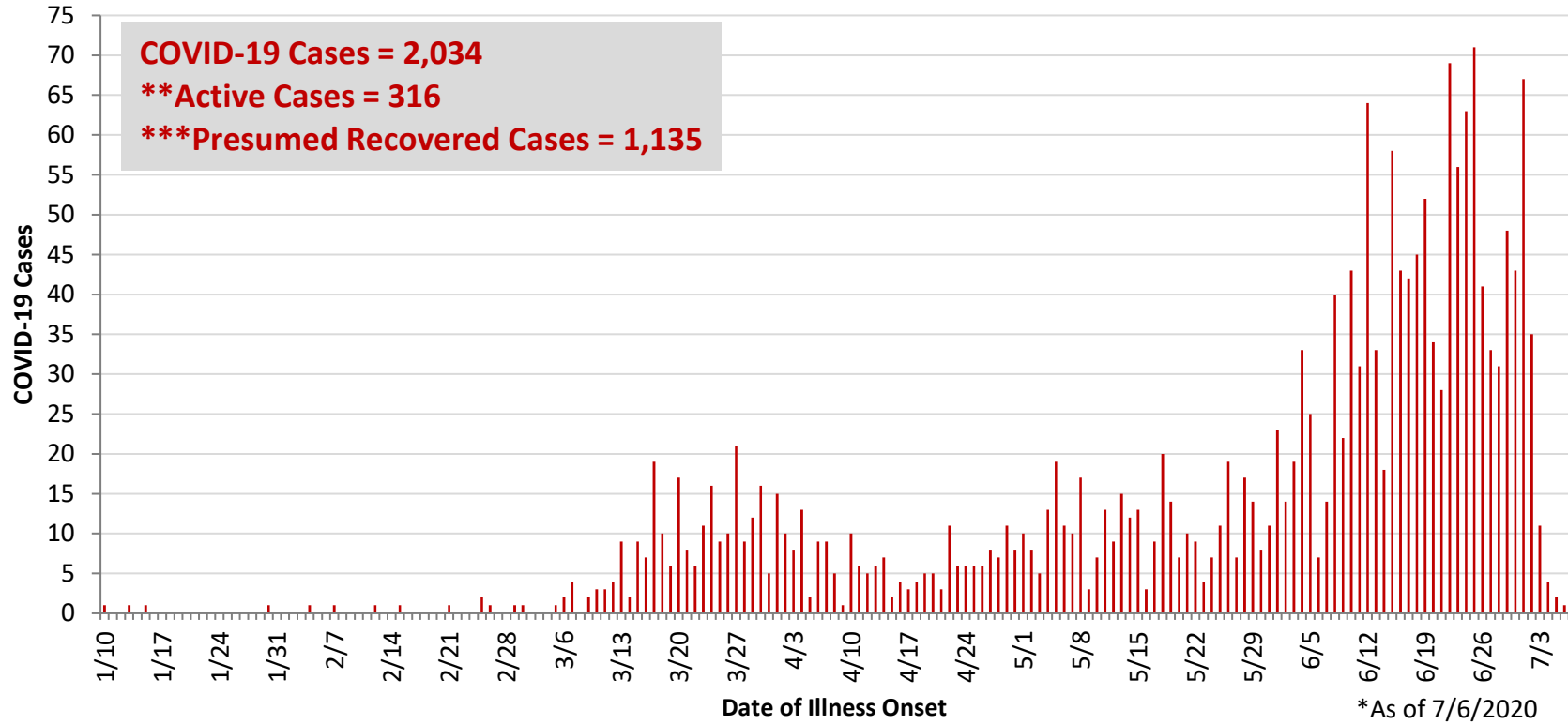
<b>Montgomery County COVID-19 Cases by Age Group As of 7/6/20</b>				
<b>Age Group</b>	<b># Cases</b>	<b>Rate</b>	<b>Percent of COVID-19 Cases</b>	<b>Percent of MC Population</b>
<5	52	159.9	2.6%	6.1%
5-9	38	117.6	1.9%	6.1%
10-14	36	110.7	1.8%	6.1%
15-18	66	244.8	3.3%	5.1%
19-24	191	453.4	9.7%	7.9%
25-29	192	498.8	9.7%	7.2%
30-34	192	561.3	9.7%	6.4%
35-39	181	558.5	9.2%	6.1%
40-44	134	474.3	6.8%	5.3%
45-49	160	503.2	8.1%	6.0%
50-54	142	427.0	7.2%	6.2%
55-59	157	427.5	7.9%	6.9%
60-64	128	364.0	6.5%	6.6%
65-69	98	327.5	5.0%	5.6%
70-74	76	321.9	3.8%	4.4%
75-79	47	278.5	2.4%	3.2%
80-84	37	312.1	1.9%	2.2%
85+	49	368.0	2.5%	2.5%
<b>Total</b>	<b>1,976</b>	<b>371.2</b>	<b>100%</b>	<b>100%</b>



**Percent of Montgomery County COVID-19 Cases by Age Group vs Percent of Population by Age Group**



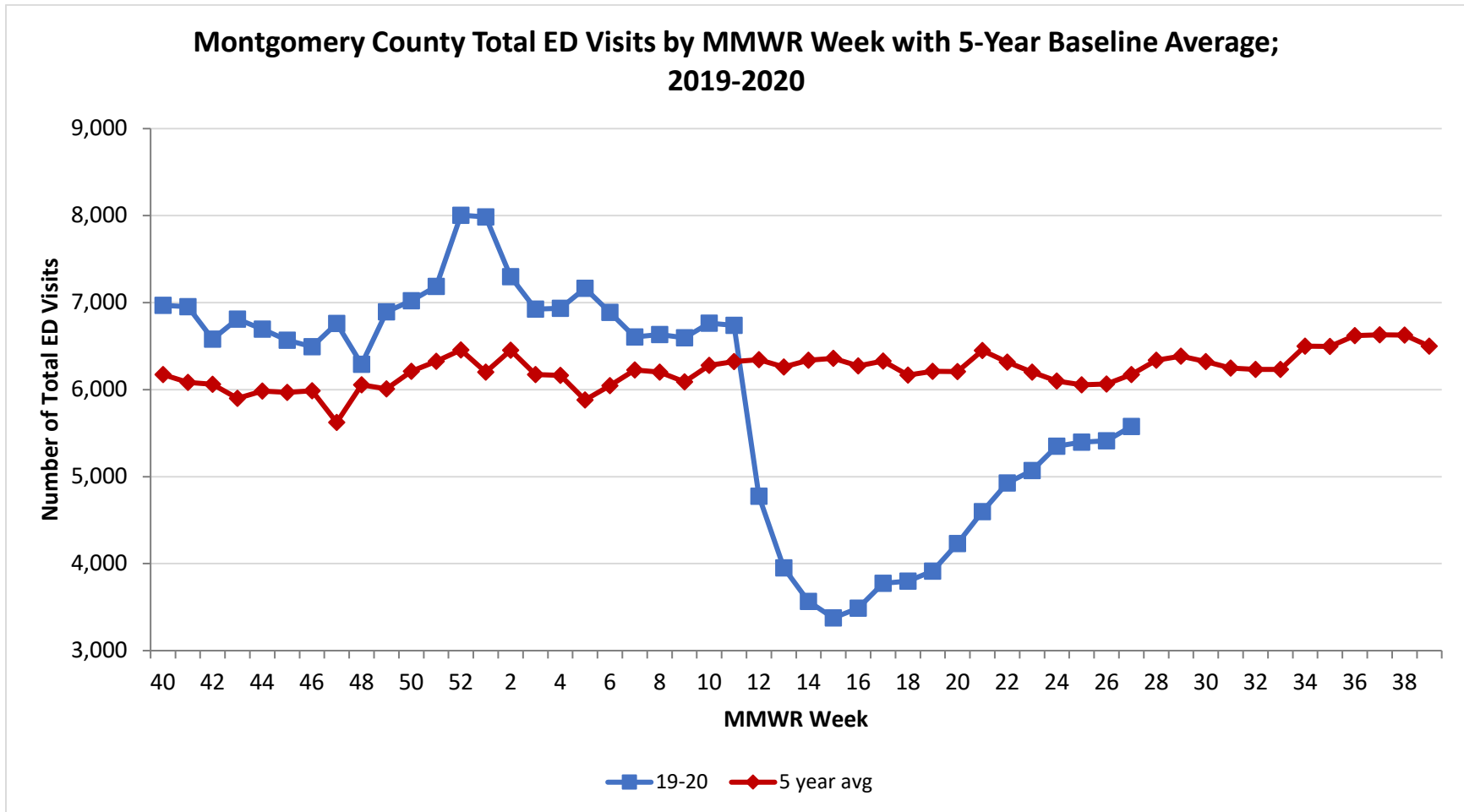
**PRELIMINARY COVID-19 Cases by Date of Illness Onset  
Montgomery County, 1/10/20 - 7/6/20\***



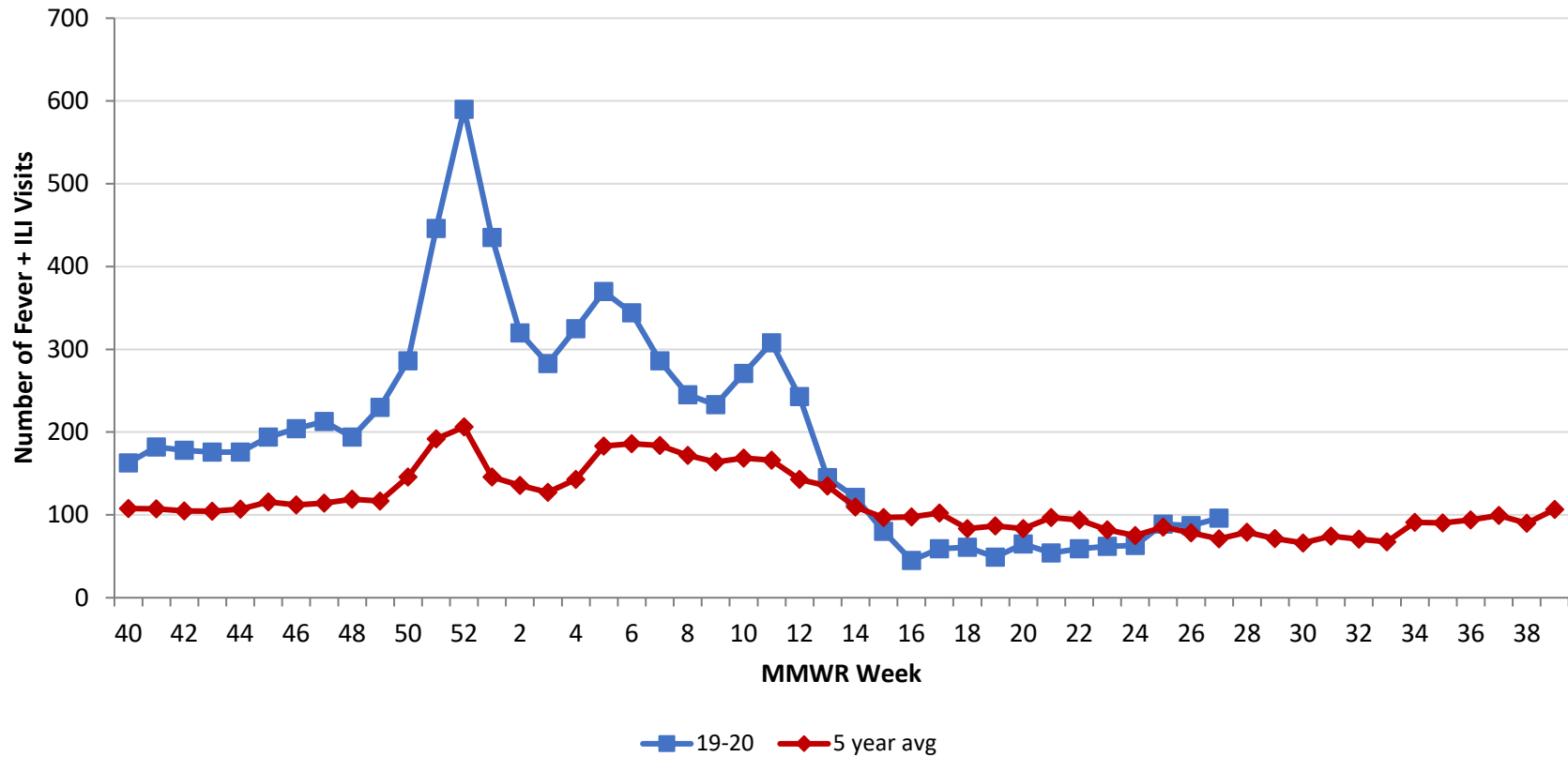
\*\*Active cases are based on the reported illness onset date (using a 10-day window).

\*\*\*Presumed recovered is defined as cases with a symptom onset date >21 days prior who are not deceased.

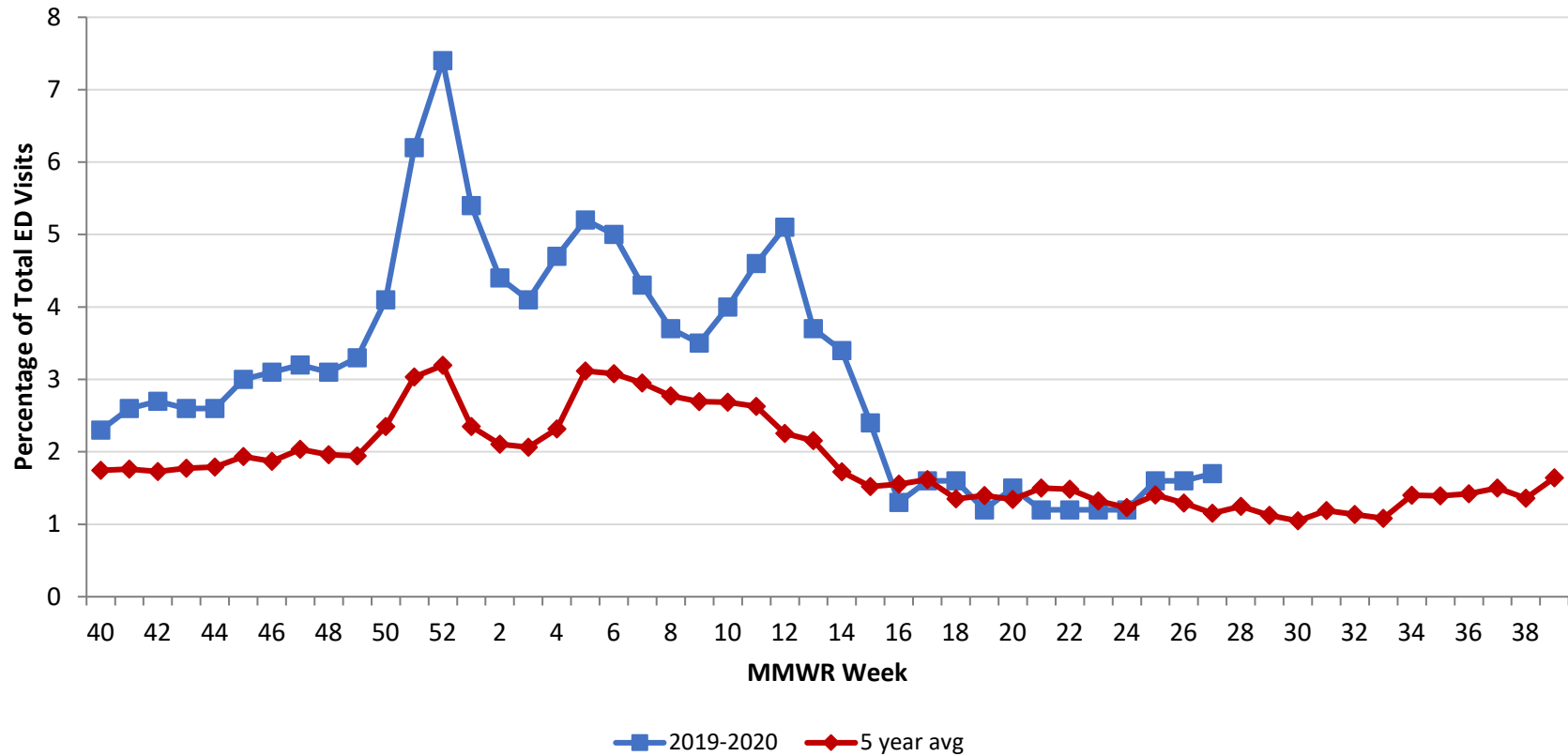
Source: EpiCenter Syndromic Surveillance, Health Monitoring Systems



Montgomery County Fever + ILI Specified ED Visits by MMWR Week with 5-Year Baseline Average; 2019-2020



**Montgomery County Fever + ILI Specified ED Visits (% of Total Visits) by MMWR Week with 5-Year Baseline Average; 2019-2020**



# Total Visits		
MMWR Week	19-20	5-Year Average
44	6,694	5982.4
45	6,567	5968.0
46	6,494	5987.6
47	6,760	5622.8
48	6,292	6056.8
49	6,895	6008.0
50	7,022	6209.8
51	7,185	6324.4
52	8,005	6456.0
1	7,986	6200.8
2	7,297	6452.4
3	6,924	6172.9
4	6,935	6164.0
5	7,164	5881.8
6	6,888	6045.0
7	6,605	6226.8
8	6,633	6200.6
9	6,597	6088.2
10	6,763	6279.6
11	6,738	6321.6
12	4,775	6345.0
13	3,952	6259.8
14	3,565	6337.4
15	3,376	6360.6
16	3,489	6273.4
17	3,774	6327.8
18	3,798	6165.8
19	3,915	6209.8
20	4,231	6208.4
21	4,598	6,449.6
22	4,928	6,315.4
23	5,070	6,201.0
24	5,350	6,098.4
25	5,398	6,055.8
26	5,412	6,063.2
27	5,577	6,173.0

# Fever + ILI Visits		
MMWR Week	19-20	5-Year Average
44	176	107.0
45	194	115.6
46	204	112.0
47	213	114.4
48	194	118.8
49	230	116.8
50	286	145.8
51	446	191.8
52	590	206.2
1	435	145.8
2	320	135.8
3	283	127.4
4	325	142.8
5	370	183.2
6	344	186.2
7	286	183.8
8	245	171.8
9	233	164.0
10	271	168.6
11	308	166.2
12	243	143.0
13	145	134.8
14	121	109.4
15	80	96.8
16	45	97.6
17	59	102.4
18	61	83.4
19	49	86.8
20	65	83.4
21	54	96.8
22	59	93.8
23	62	82.0
24	63	75.0
25	89	85.2
26	87	78.4
27	96	71.2

% Fever + ILI Visits		
MMWR Week	19-20	5-Year Average
44	2.6	1.8
45	3.0	1.9
46	3.1	1.9
47	3.2	2.0
48	3.1	2.0
49	3.3	1.9
50	4.1	2.3
51	6.2	3.0
52	7.4	3.2
1	5.4	2.4
2	4.4	2.1
3	4.1	2.1
4	4.7	2.3
5	5.2	3.1
6	5	3.1
7	4.3	3.0
8	3.7	2.8
9	3.5	2.7
10	4	2.7
11	4.6	2.6
12	5.1	2.3
13	3.7	2.2
14	3.4	1.7
15	2.4	1.5
16	1.3	1.6
17	1.6	1.6
18	1.6	1.4
19	1.2	1.4
20	1.5	1.3
21	1.2	1.5
22	1.2	1.5
23	1.2	1.3
24	1.2	1.2
25	1.6	1.4
26	1.6	1.3
27	1.7	1.2