



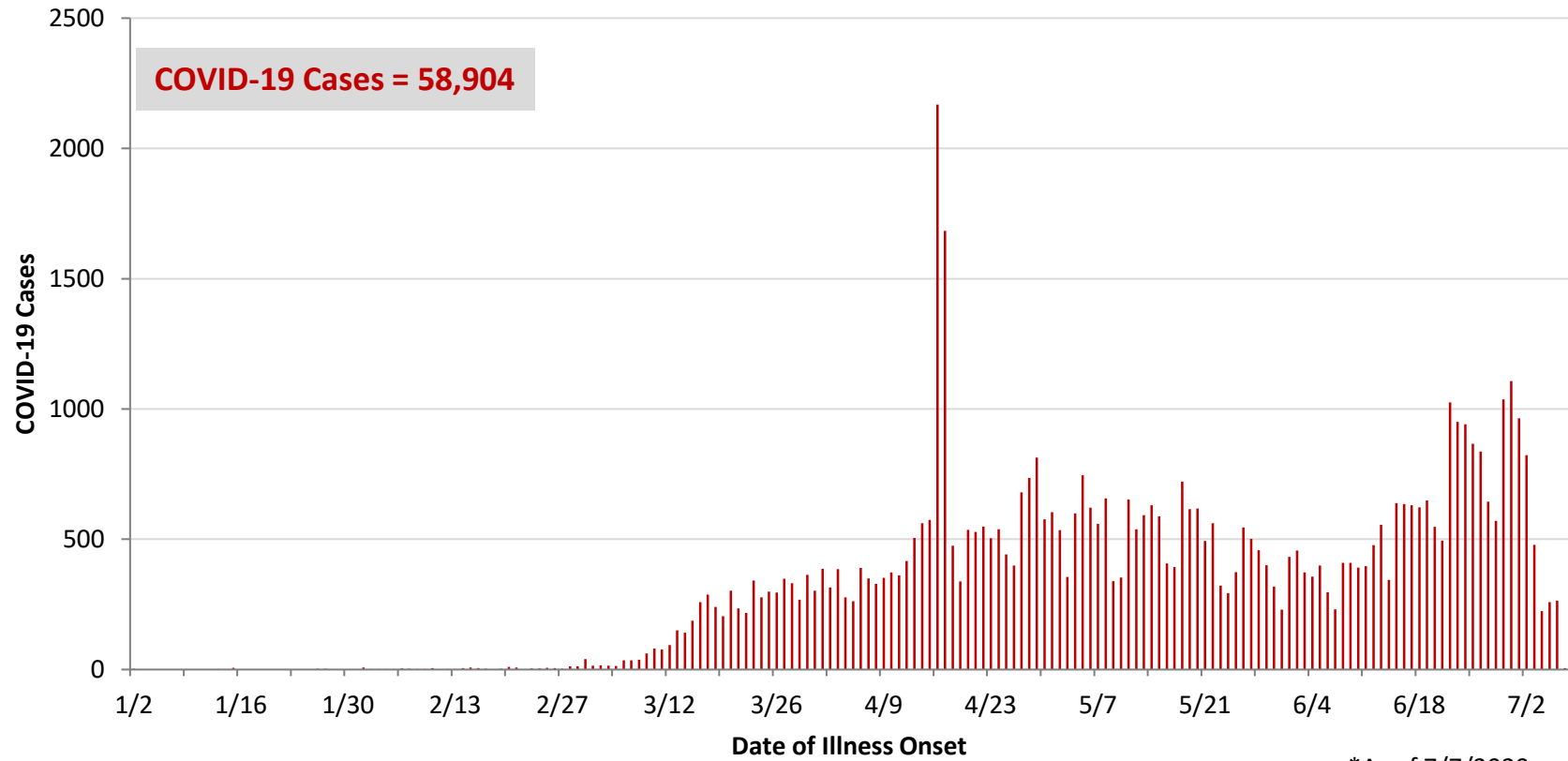
**Ohio, West Central Ohio (WCO), and Montgomery County COVID-19 Cases
As of 7/7/20**

Source: The State of Ohio COVID-19 Dashboard, Ohio Department of Health

Ohio:

Preliminary COVID-19 Cases Ohio, As of 7/7/2020		
Sex	# Cases	% Cases
Female	29,300	50%
Male	29,110	49%
Unknown	494	1%
Total	58,904	100%
Age Group		
Age Group	# Cases	% Cases
0-19	4,175	7%
20-29	10,566	18%
30-39	9,986	17%
40-49	8,814	15%
50-59	8,920	15%
60-69	6,901	12%
70-79	4,492	8%
80+	4,997	8%
Unknown	53	0%
Total	58,904	100%
Hospitalized		
Hospitalized	8,383	14.2%
Deaths		
Deaths	2,970	5.0%
Age Group		
Age Group	Deaths	% of Deaths
0-19	2	0%
20-29	11	0%
30-39	20	1%
40-49	44	1%
50-59	178	6%
60-69	420	14%
70-79	732	25%
80+	1,563	53%
Total	2,970	100%

**PRELIMINARY COVID-19 Cases by Date of Illness Onset
Ohio, 1/2/20 - 7/7/20***

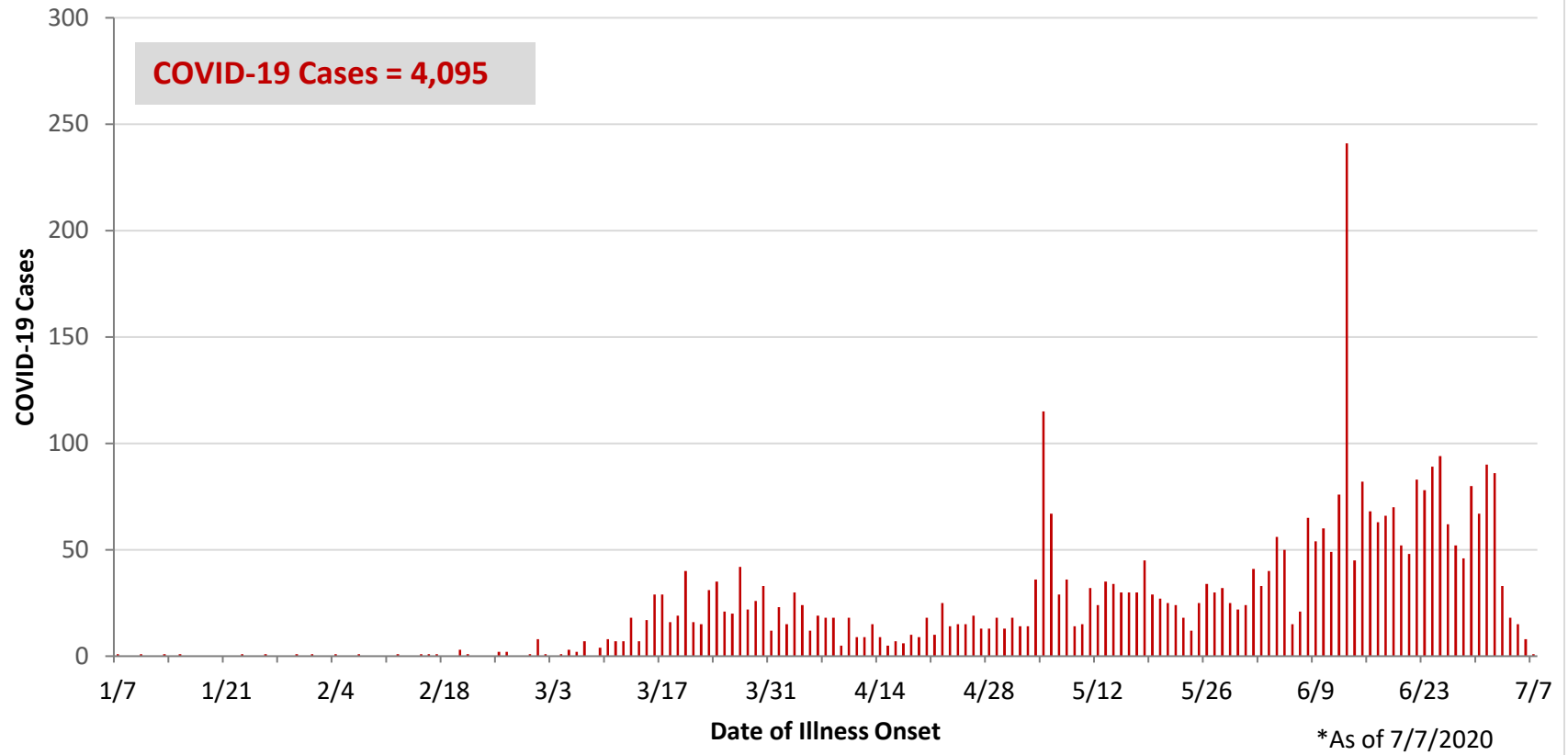


*As of 7/7/2020

WCO:

Preliminary COVID-19 Cases West Central Ohio, As of 7/7/2020		
County	# Cases	% Cases
Champaign	41	1%
Clark	772	19%
Darke	253	6%
Greene	276	7%
Miami	472	12%
Montgomery	2,134	52%
Preble	78	2%
Shelby	69	2%
Total	4,095	100%
Sex		
Sex	# Cases	% Cases
Female	2,188	53%
Male	1,797	44%
Unknown	110	3%
Total	4,095	100%
Age Group		
Age Group	# Cases	% Cases
0-19	399	10%
20-29	790	19%
30-39	708	17%
40-49	568	14%
50-59	581	14%
60-69	482	12%
70-79	282	7%
80+	285	7%
Total	4,095	100%
Hospitalized	547	13.4%
Deaths	112	2.7%
Age Group		
Age Group	Deaths	% of Deaths
0-19	0	0%
20-29	1	1%
30-39	2	2%
40-49	2	2%
50-59	8	7%
60-69	17	15%
70-79	18	16%
80+	64	57%
Total	112	100%

**PRELIMINARY COVID-19 Cases by Date of Illness Onset
West Central Ohio, 1/7/20 - 7/7/20***



Montgomery County:

Preliminary COVID-19 Cases Montgomery County, As of 7/7/2020		
Sex	# Cases	% Cases
Female	1,176	55%
Male	936	44%
Unknown	22	1%
Total	2,134	100%
Age Group		
Age Group	# Cases	% Cases
0-19	235	11%
20-29	394	18%
30-39	396	19%
40-49	314	15%
50-59	315	15%
60-69	244	11%
70-79	134	6%
80+	102	5%
Total	2,134	100%
Hospitalized	324	15.2%
Deaths	31	1.5%
Age Group	Deaths	% of Deaths
0-19	0	0%
20-29	1	3%
30-39	1	3%
40-49	2	6%
50-59	5	16%
60-69	8	26%
70-79	3	10%
80+	11	35%
Total	31	100%

Age Group	Hospitalizations	% of Age Group Cases
0-19	14	6.0%
20-29	14	3.6%
30-39	32	8.1%
40-49	41	13.1%
50-59	65	20.6%
60-69	69	28.3%
70-79	51	38.1%
80+	38	37.3%
Total	324	15.2%

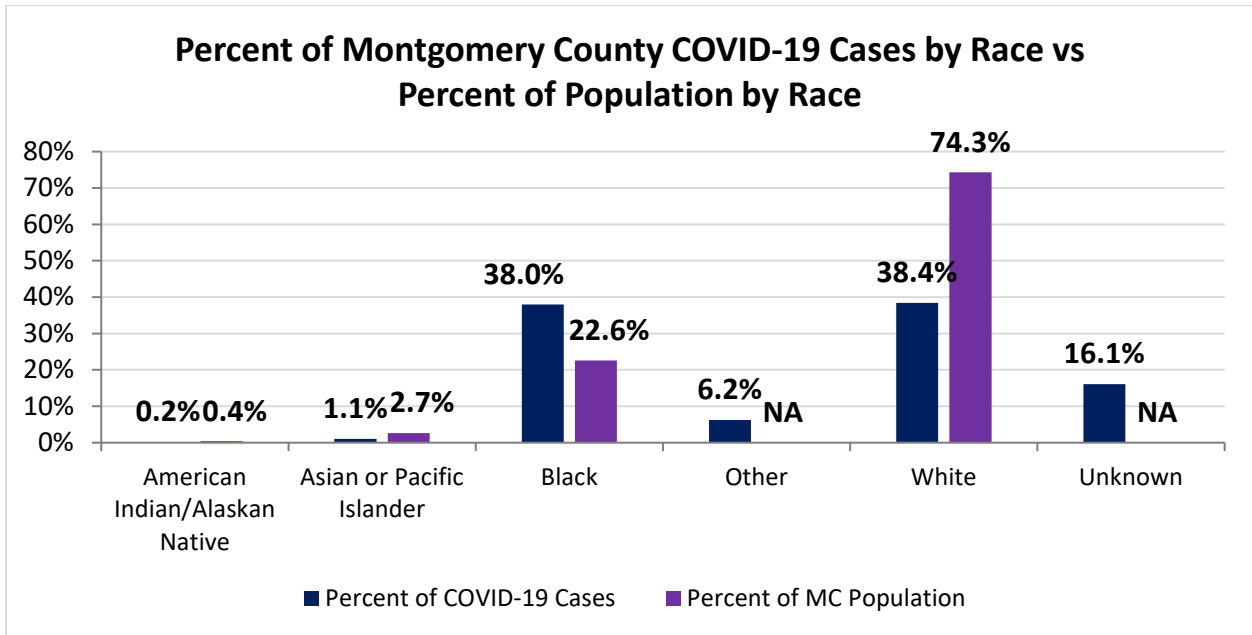
Source: Ohio Disease Reporting System, ODH

Montgomery County COVID-19 Cases by Race As of 7/6/20				
Race	Count	Percent	Rate	Rate Interpretation**
American Indian/Alaskan Native (AI/AN)*	4	0.2%	186.2	1 in 716
Asian	21	1.1%	147.6	1 in 678
Black	751	38.0%	624.0	1 in 160
Other	123	6.2%	NA	NA
White	760	38.4%	192.1	1 in 521
Unknown	318	16.1%	NA	NA
Total	1,977	100%	371.4	1 in 269

*Note. AI/ANs account for 0.4% of Montgomery County’s population, and therefore, rates for this population will be large and may be misleading.

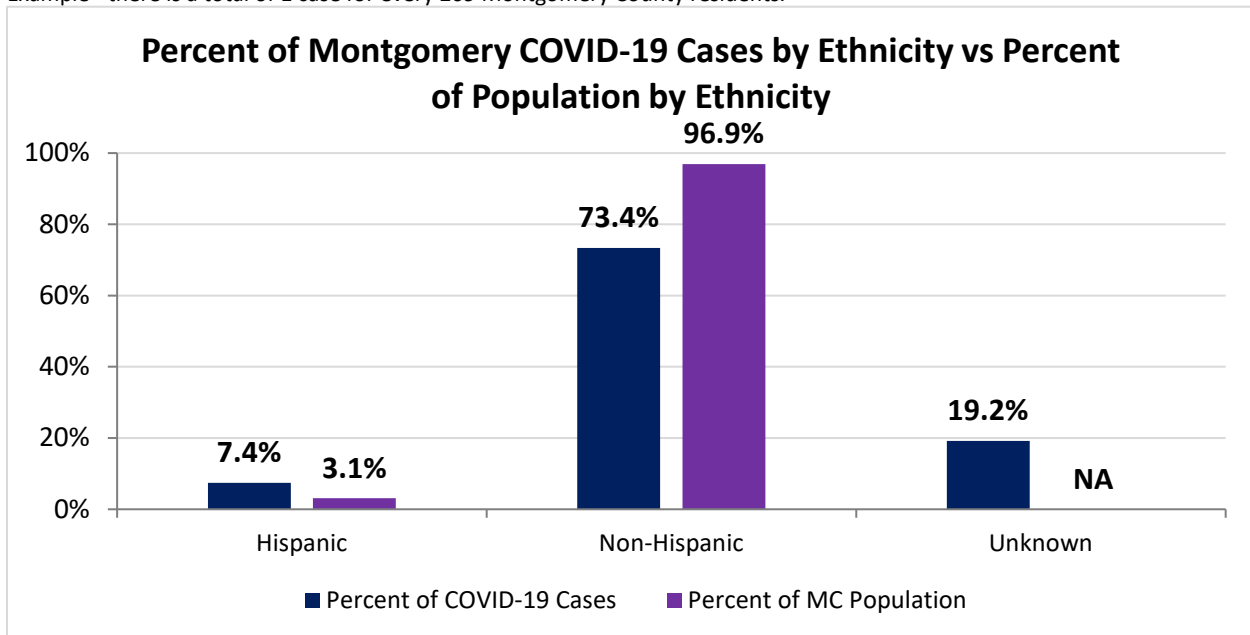
**Rate interpretation represents the number of cases for the given population.

Example - there is a total of 1 case for every 269 Montgomery County residents.



Montgomery County COVID-19 Cases by Ethnicity As of 7/6/20				
Ethnicity	Count	Percent	Rate	Rate Interpretation**
Hispanic	147	7.4%	893.1	1 in 112
Non-Hispanic	1,451	73.4%	281.3	1 in 356
Unknown	379	19.2%	NA	NA
Total	1,977	100%	371.4	1 in 269

**Rate interpretation represents the number of cases for the given population.
 Example - there is a total of 1 case for every 269 Montgomery County residents.

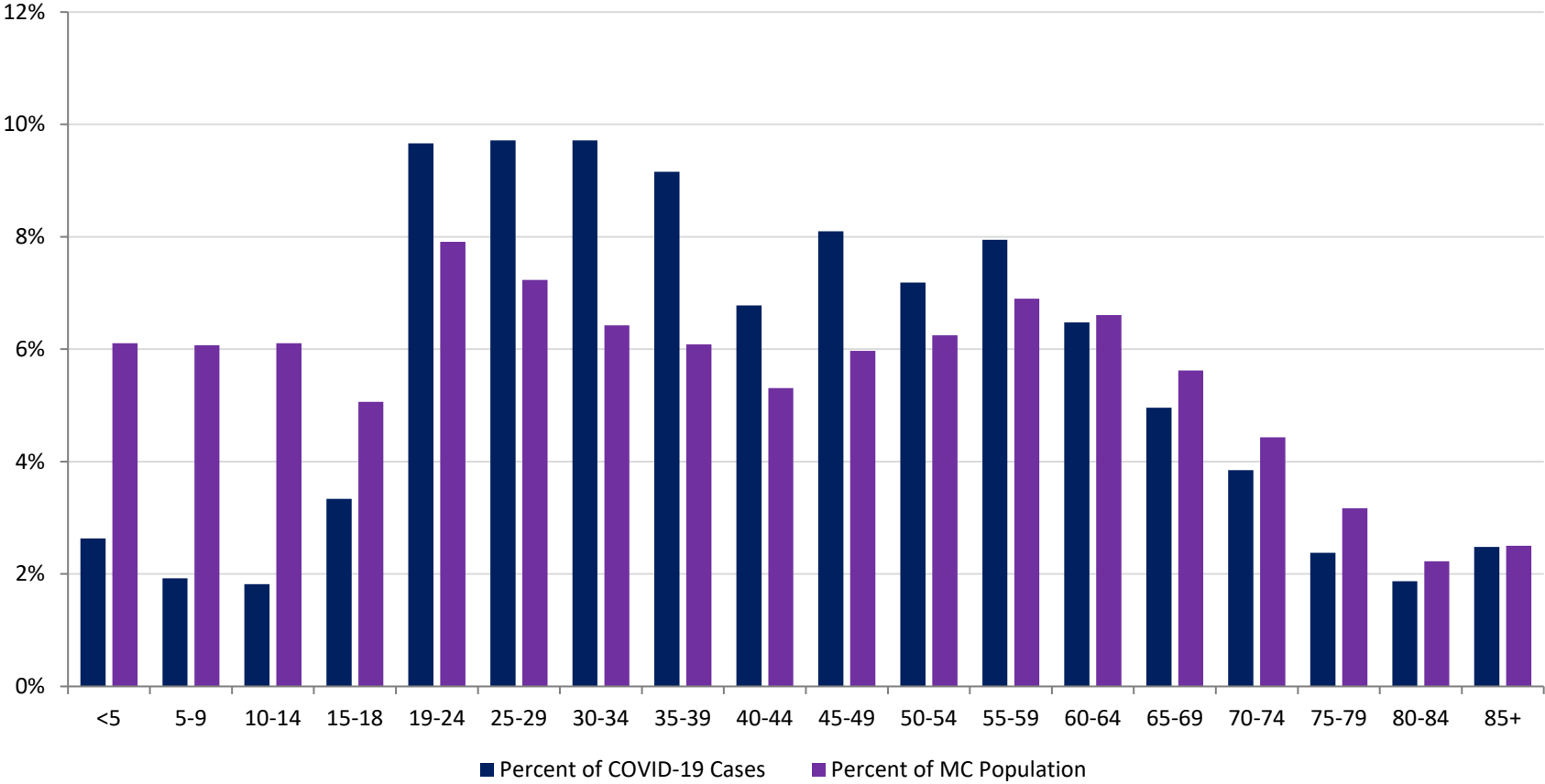


Montgomery County COVID-19 Cases by Health Care Worker Status As of 7/6/20		
Status	#	%
Health Care Worker	267	13.5%
Non-Health Care Worker	1,240	62.7%
Unknown	470	23.8%
Total	1,977	100%

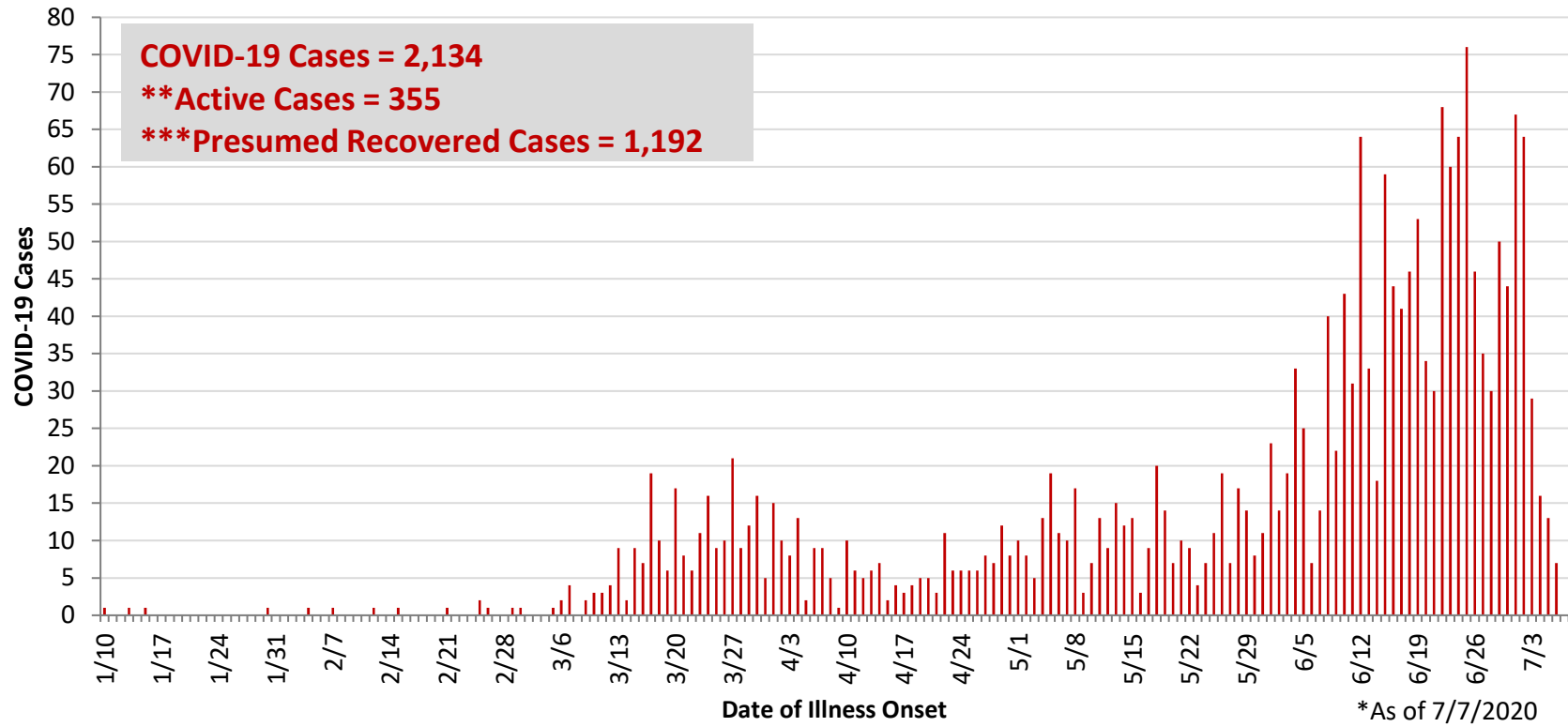
Montgomery County COVID-19 Cases Age Range As of 7/6/20	
Stat	Age in Years
Age Range	<1 - 104
Average Age	42.8
Median Age	41.0

Montgomery County COVID-19 Cases by Age Group As of 7/6/20				
Age Group	# Cases	Rate	Percent of COVID-19 Cases	Percent of MC Population
<5	52	159.9	2.6%	6.1%
5-9	38	117.6	1.9%	6.1%
10-14	36	110.7	1.8%	6.1%
15-18	66	244.8	3.3%	5.1%
19-24	191	453.4	9.7%	7.9%
25-29	192	498.8	9.7%	7.2%
30-34	192	561.3	9.7%	6.4%
35-39	181	558.5	9.2%	6.1%
40-44	134	474.3	6.8%	5.3%
45-49	160	503.2	8.1%	6.0%
50-54	142	427.0	7.2%	6.2%
55-59	157	427.5	7.9%	6.9%
60-64	128	364.0	6.5%	6.6%
65-69	98	327.5	5.0%	5.6%
70-74	76	321.9	3.8%	4.4%
75-79	47	278.5	2.4%	3.2%
80-84	37	312.1	1.9%	2.2%
85+	49	368.0	2.5%	2.5%
Total	1,976	371.2	100%	100%

Percent of Montgomery County COVID-19 Cases by Age Group vs Percent of Population by Age Group



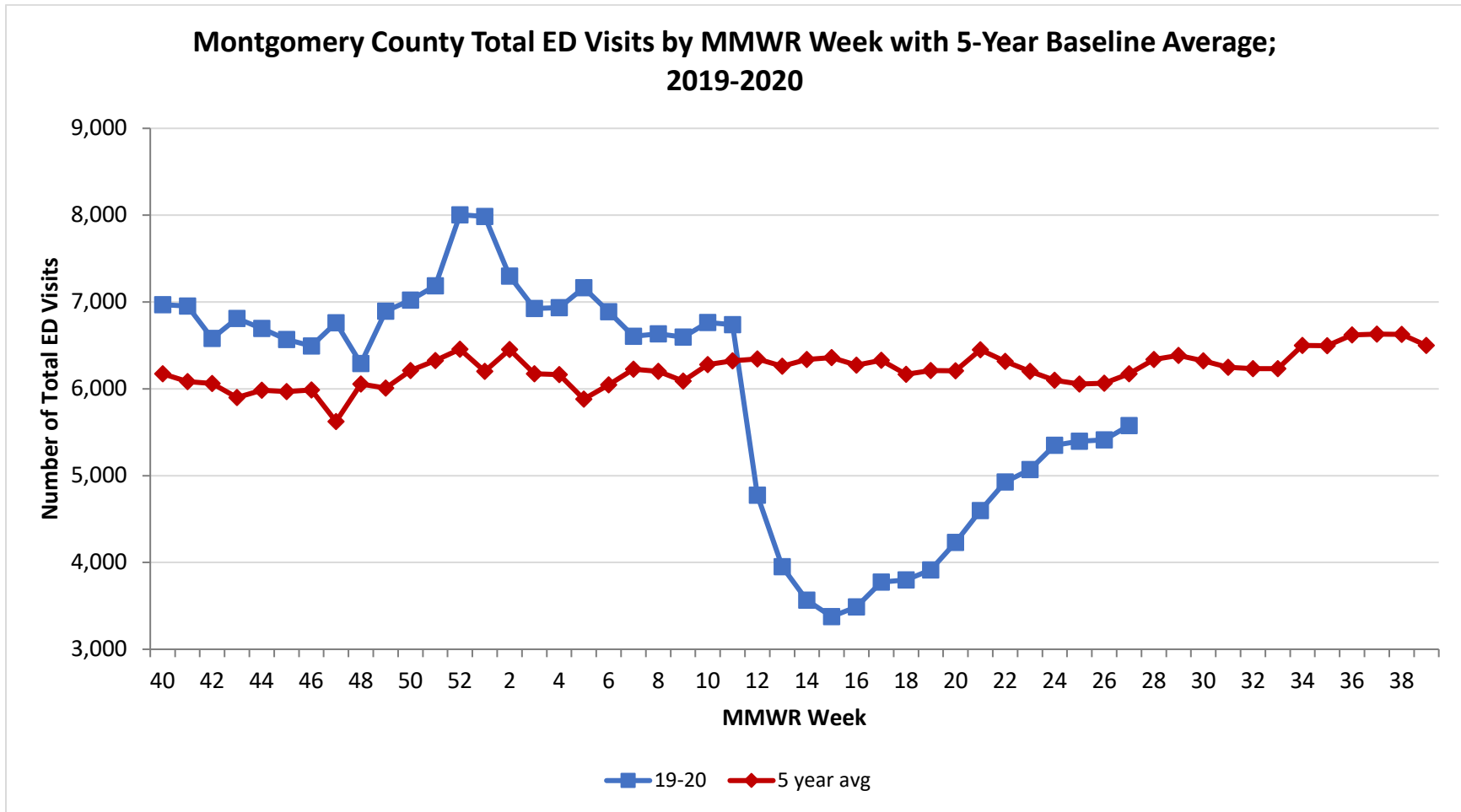
**PRELIMINARY COVID-19 Cases by Date of Illness Onset
Montgomery County, 1/10/20 - 7/7/20***



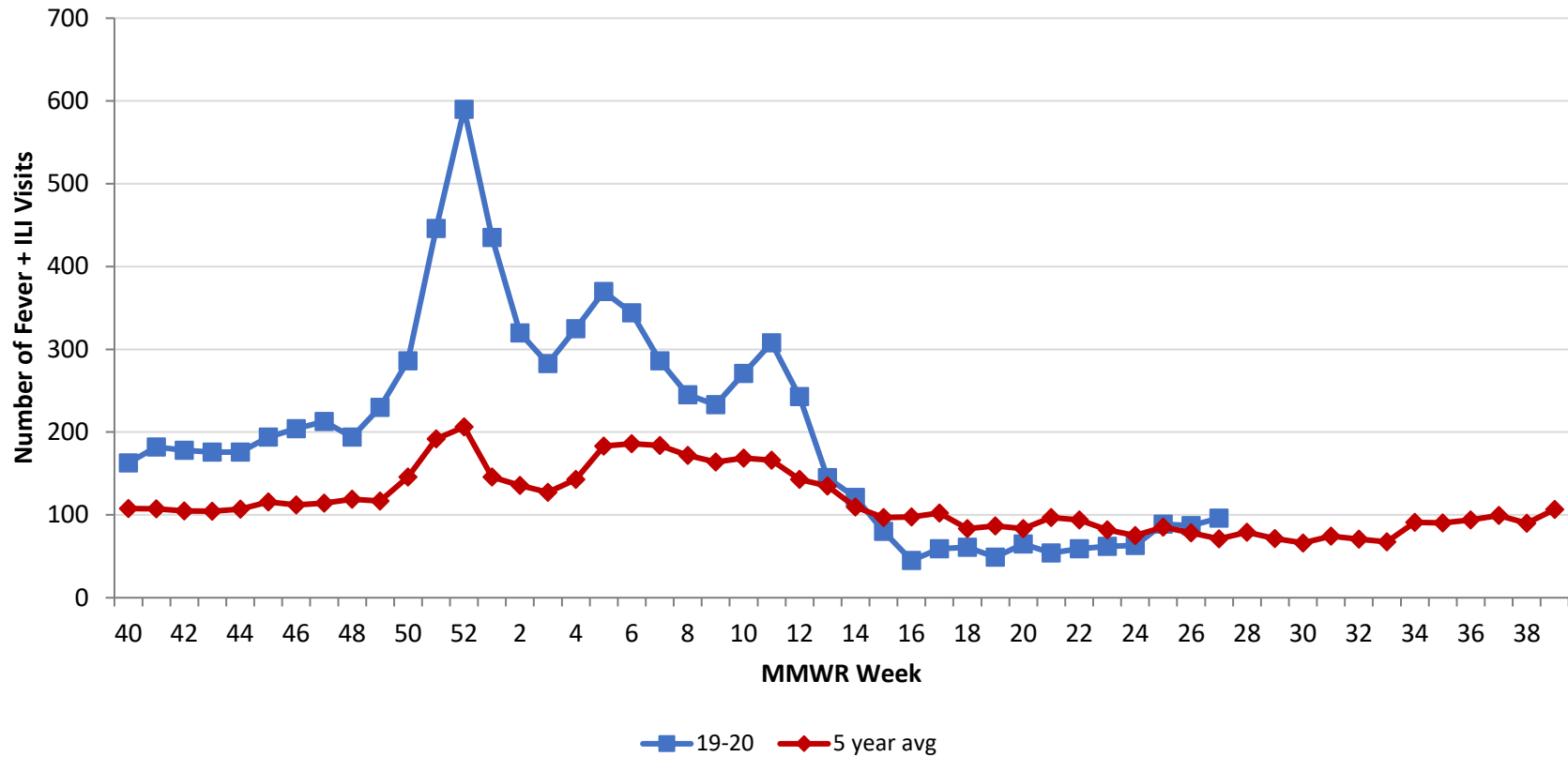
**Active cases are based on the reported illness onset date (using a 10-day window).

***Presumed recovered is defined as cases with a symptom onset date >21 days prior who are not deceased.

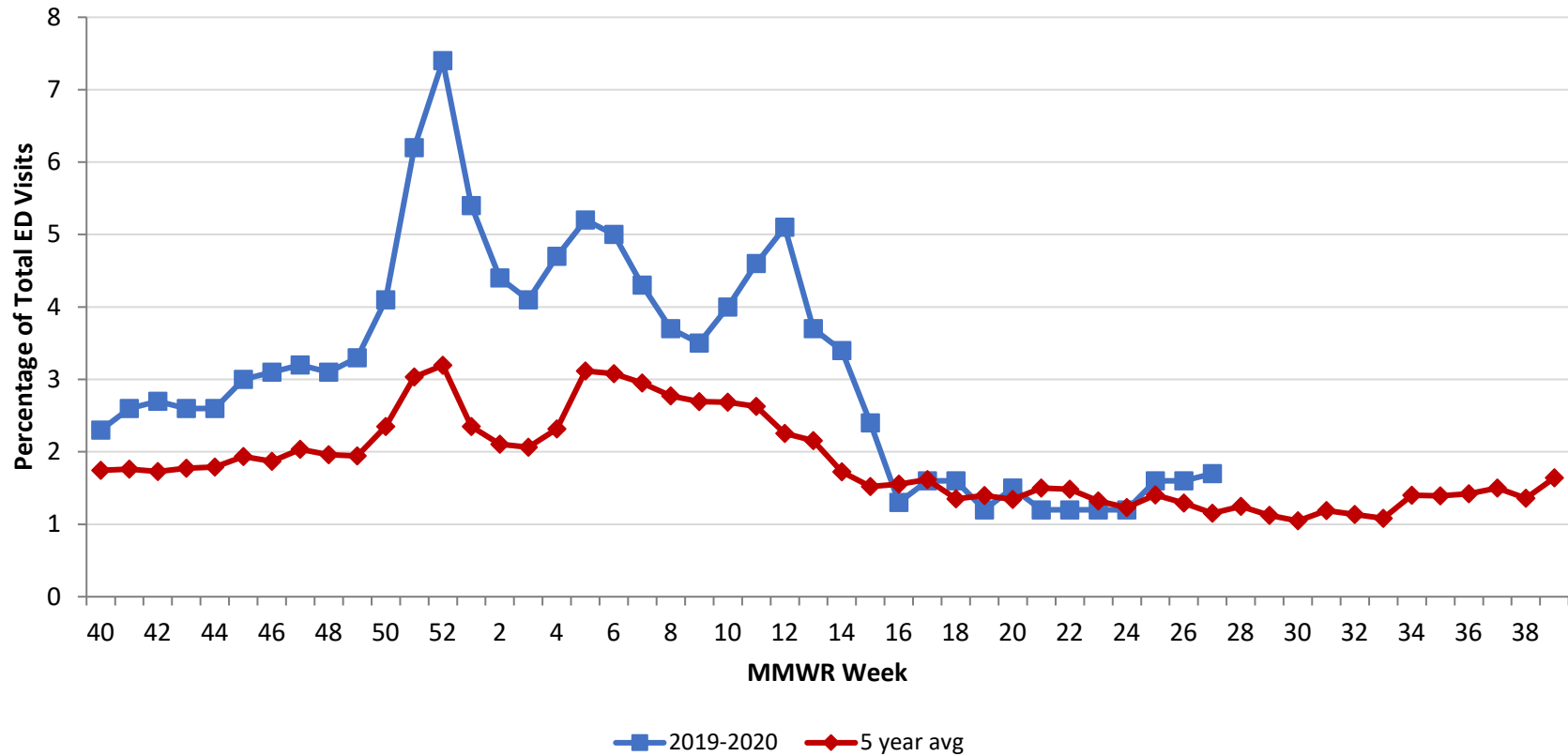
Source: EpiCenter Syndromic Surveillance, Health Monitoring Systems



Montgomery County Fever + ILI Specified ED Visits by MMWR Week with 5-Year Baseline Average; 2019-2020



**Montgomery County Fever + ILI Specified ED Visits (% of Total Visits) by MMWR Week
with 5-Year Baseline Average; 2019-2020**



# Total Visits		
MMWR Week	19-20	5-Year Average
44	6,694	5982.4
45	6,567	5968.0
46	6,494	5987.6
47	6,760	5622.8
48	6,292	6056.8
49	6,895	6008.0
50	7,022	6209.8
51	7,185	6324.4
52	8,005	6456.0
1	7,986	6200.8
2	7,297	6452.4
3	6,924	6172.9
4	6,935	6164.0
5	7,164	5881.8
6	6,888	6045.0
7	6,605	6226.8
8	6,633	6200.6
9	6,597	6088.2
10	6,763	6279.6
11	6,738	6321.6
12	4,775	6345.0
13	3,952	6259.8
14	3,565	6337.4
15	3,376	6360.6
16	3,489	6273.4
17	3,774	6327.8
18	3,798	6165.8
19	3,915	6209.8
20	4,231	6208.4
21	4,598	6,449.6
22	4,928	6,315.4
23	5,070	6,201.0
24	5,350	6,098.4
25	5,398	6,055.8
26	5,412	6,063.2
27	5,577	6,173.0

# Fever + ILI Visits		
MMWR Week	19-20	5-Year Average
44	176	107.0
45	194	115.6
46	204	112.0
47	213	114.4
48	194	118.8
49	230	116.8
50	286	145.8
51	446	191.8
52	590	206.2
1	435	145.8
2	320	135.8
3	283	127.4
4	325	142.8
5	370	183.2
6	344	186.2
7	286	183.8
8	245	171.8
9	233	164.0
10	271	168.6
11	308	166.2
12	243	143.0
13	145	134.8
14	121	109.4
15	80	96.8
16	45	97.6
17	59	102.4
18	61	83.4
19	49	86.8
20	65	83.4
21	54	96.8
22	59	93.8
23	62	82.0
24	63	75.0
25	89	85.2
26	87	78.4
27	96	71.2

% Fever + ILI Visits		
MMWR Week	19-20	5-Year Average
44	2.6	1.8
45	3.0	1.9
46	3.1	1.9
47	3.2	2.0
48	3.1	2.0
49	3.3	1.9
50	4.1	2.3
51	6.2	3.0
52	7.4	3.2
1	5.4	2.4
2	4.4	2.1
3	4.1	2.1
4	4.7	2.3
5	5.2	3.1
6	5	3.1
7	4.3	3.0
8	3.7	2.8
9	3.5	2.7
10	4	2.7
11	4.6	2.6
12	5.1	2.3
13	3.7	2.2
14	3.4	1.7
15	2.4	1.5
16	1.3	1.6
17	1.6	1.6
18	1.6	1.4
19	1.2	1.4
20	1.5	1.3
21	1.2	1.5
22	1.2	1.5
23	1.2	1.3
24	1.2	1.2
25	1.6	1.4
26	1.6	1.3
27	1.7	1.2