



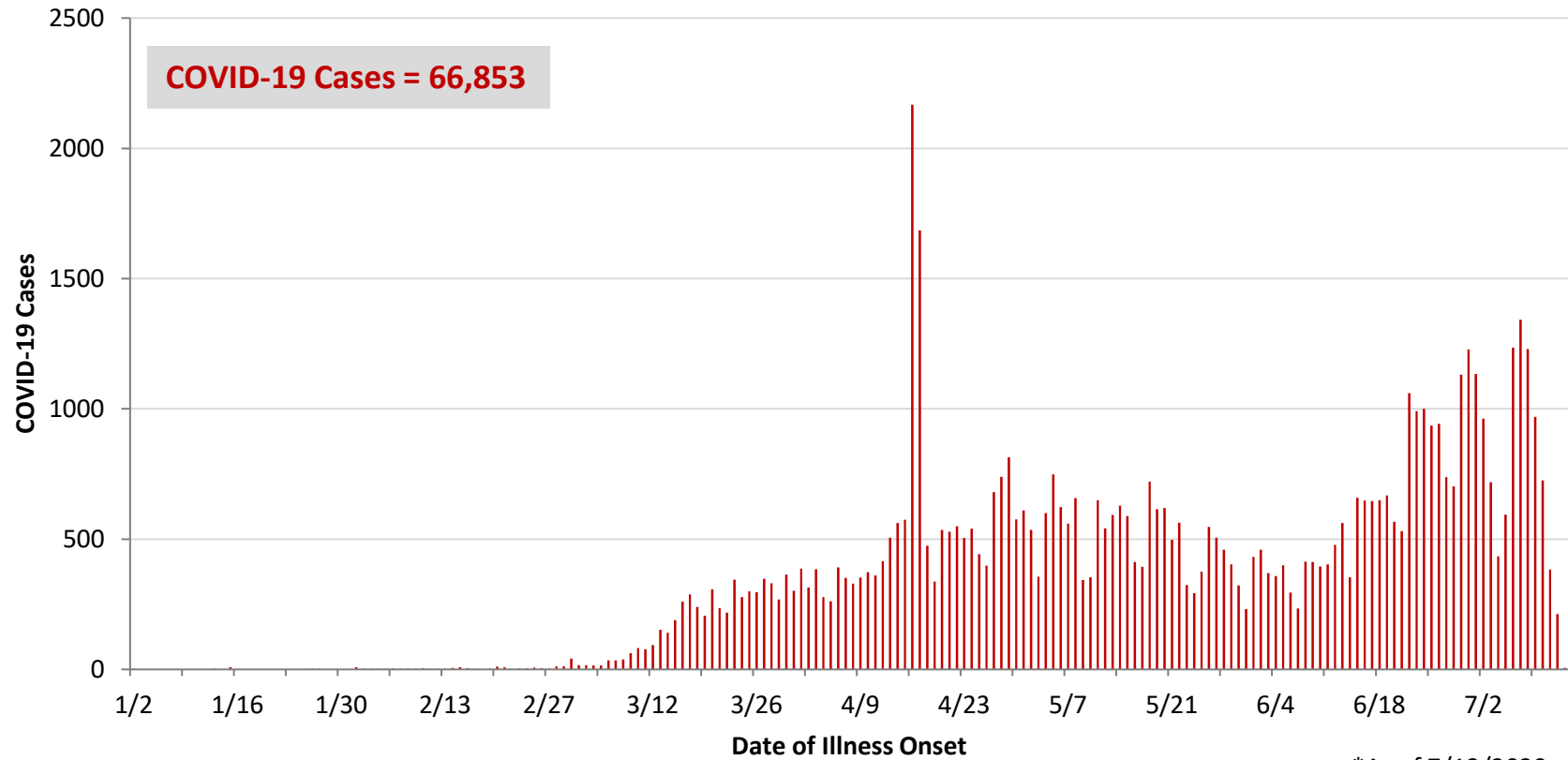
**Ohio, West Central Ohio (WCO), and Montgomery County COVID-19 Cases
As of 7/13/20**

Source: The State of Ohio COVID-19 Dashboard, Ohio Department of Health

Ohio:

Preliminary COVID-19 Cases Ohio, As of 7/13/2020		
Sex	# Cases	% Cases
Female	33,555	50%
Male	32,721	49%
Unknown	577	1%
Total	66,853	100%
Age Group		
Age Group	# Cases	% Cases
0-19	5,138	8%
20-29	12,936	19%
30-39	11,273	17%
40-49	9,843	15%
50-59	9,896	15%
60-69	7,571	11%
70-79	4,886	7%
80+	5,250	8%
Unknown	60	0%
Total	66,853	100%
Hospitalized		
Hospitalized	8,915	13.3%
Deaths		
Deaths	3,064	4.6%
Age Group		
Age Group	Deaths	% of Deaths
0-19	2	0%
20-29	11	0%
30-39	23	1%
40-49	46	2%
50-59	188	6%
60-69	431	14%
70-79	753	25%
80+	1,610	53%
Total	3,064	100%

**PRELIMINARY COVID-19 Cases by Date of Illness Onset
Ohio, 1/2/20 - 7/13/20***

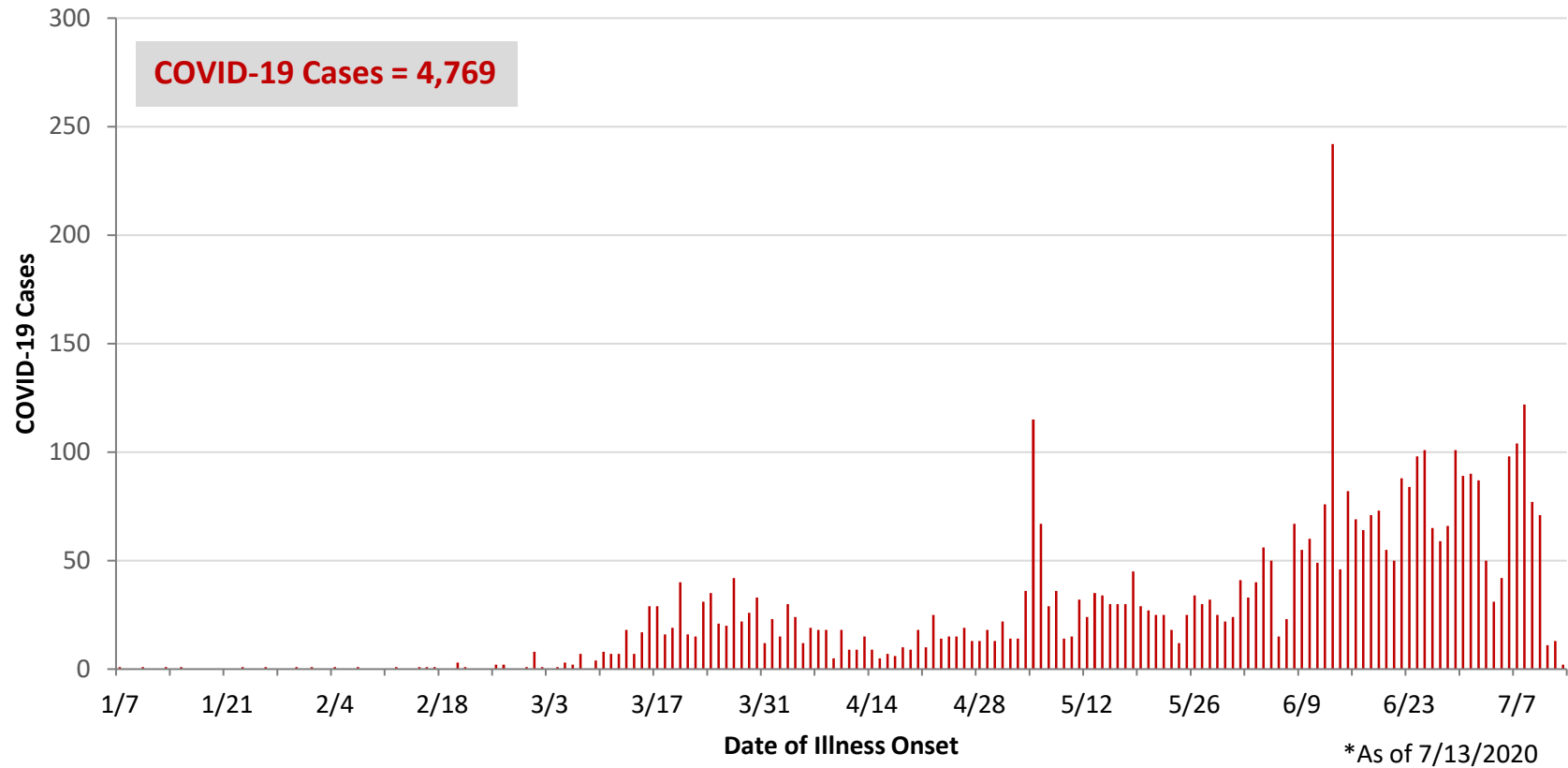


*As of 7/13/2020

WCO:

Preliminary COVID-19 Cases West Central Ohio, As of 7/13/2020		
County	# Cases	% Cases
Champaign	57	1%
Clark	820	17%
Darke	261	5%
Greene	365	8%
Miami	514	11%
Montgomery	2,579	54%
Preble	96	2%
Shelby	77	2%
Total	4,769	100%
Sex		
Sex	# Cases	% Cases
Female	2,563	54%
Male	2,090	44%
Unknown	116	2%
Total	4,769	100%
Age Group		
Age Group	# Cases	% Cases
0-19	481	10%
20-29	928	19%
30-39	826	17%
40-49	647	14%
50-59	671	14%
60-69	559	12%
70-79	341	7%
80+	316	7%
Total	4,769	100%
Hospitalized	621	13.0%
Deaths	118	2.5%
Age Group		
Age Group	Deaths	% of Deaths
0-19	0	0%
20-29	1	1%
30-39	2	2%
40-49	2	2%
50-59	8	7%
60-69	18	15%
70-79	18	15%
80+	69	58%
Total	118	100%

**PRELIMINARY COVID-19 Cases by Date of Illness Onset
West Central Ohio, 1/7/20 - 7/13/20***



Montgomery County:

Preliminary COVID-19 Cases Montgomery County, As of 7/13/2020		
Sex	# Cases	% Cases
Female	1,425	55%
Male	1,128	44%
Unknown	26	1%
Total	2,579	100%
Age Group		
Age Group	# Cases	% Cases
0-19	295	11%
20-29	484	19%
30-39	471	18%
40-49	366	14%
50-59	369	14%
60-69	295	11%
70-79	177	7%
80+	122	5%
Total	2,579	100%
Hospitalized		
Hospitalized	383	14.9%
Deaths		
Deaths	36	1.4%
Age Group	Deaths	% of Deaths
0-19	0	0%
20-29	1	3%
30-39	1	3%
40-49	2	6%
50-59	5	14%
60-69	9	25%
70-79	3	8%
80+	15	42%
Total	36	100%

Age Group	Hospitalizations	% of Age Group Cases
0-19	17	5.8%
20-29	21	4.3%
30-39	36	7.6%
40-49	46	12.6%
50-59	70	19.0%
60-69	84	28.5%
70-79	66	37.3%
80+	43	35.2%
Total	383	14.9%

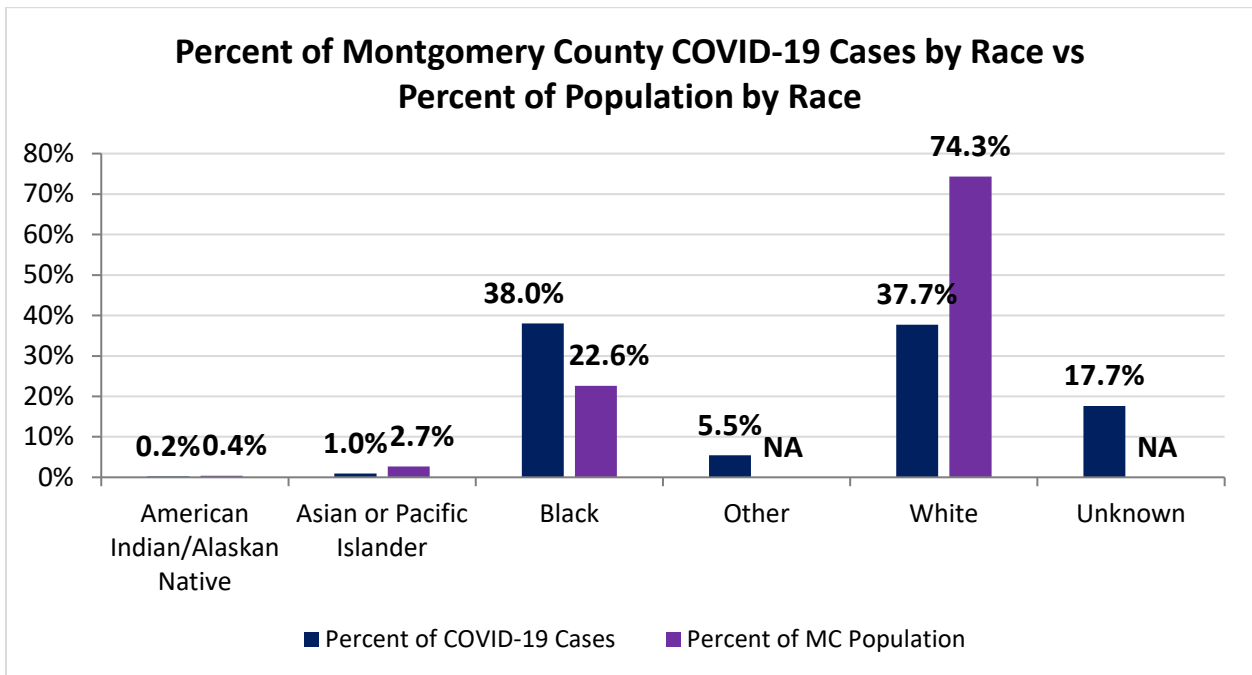
Source: Ohio Disease Reporting System, ODH

Montgomery County COVID-19 Cases by Race As of 7/13/20				
Race	Count	Percent	Rate	Rate Interpretation**
American Indian/Alaskan Native (AI/AN)*	5	0.2%	232.8	1 in 430
Asian	24	1.0%	168.7	1 in 593
Black	948	38.0%	787.6	1 in 127
Other	136	5.5%	NA	NA
White	939	37.7%	237.4	1 in 421
Unknown	440	17.7%	NA	NA
Total	2,492	100%	468.1	1 in 214

*Note. AI/ANs account for 0.4% of Montgomery County’s population, and therefore, rates for this population will be large and may be misleading.

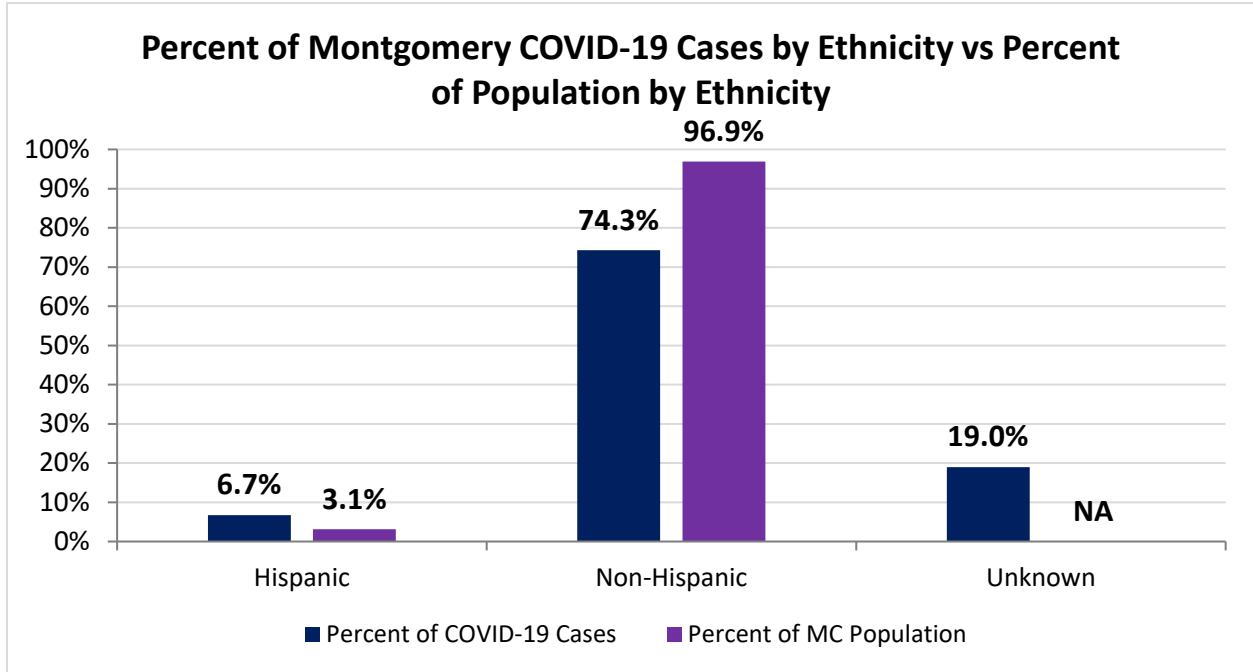
**Rate interpretation represents the number of cases for the given population.

Example - there is a total of 1 case for every 214 Montgomery County residents.



Montgomery County COVID-19 Cases by Ethnicity As of 7/13/20				
Ethnicity	Count	Percent	Rate	Rate Interpretation**
Hispanic	157	6.7%	953.8	1 in 105
Non-Hispanic	1810	74.3%	350.9	1 in 285
Unknown	525	19.0%	NA	NA
Total	2,492	100%	468.1	1 in 214

**Rate interpretation represents the number of cases for the given population.
 Example - there is a total of 1 case for every 214 Montgomery County residents.

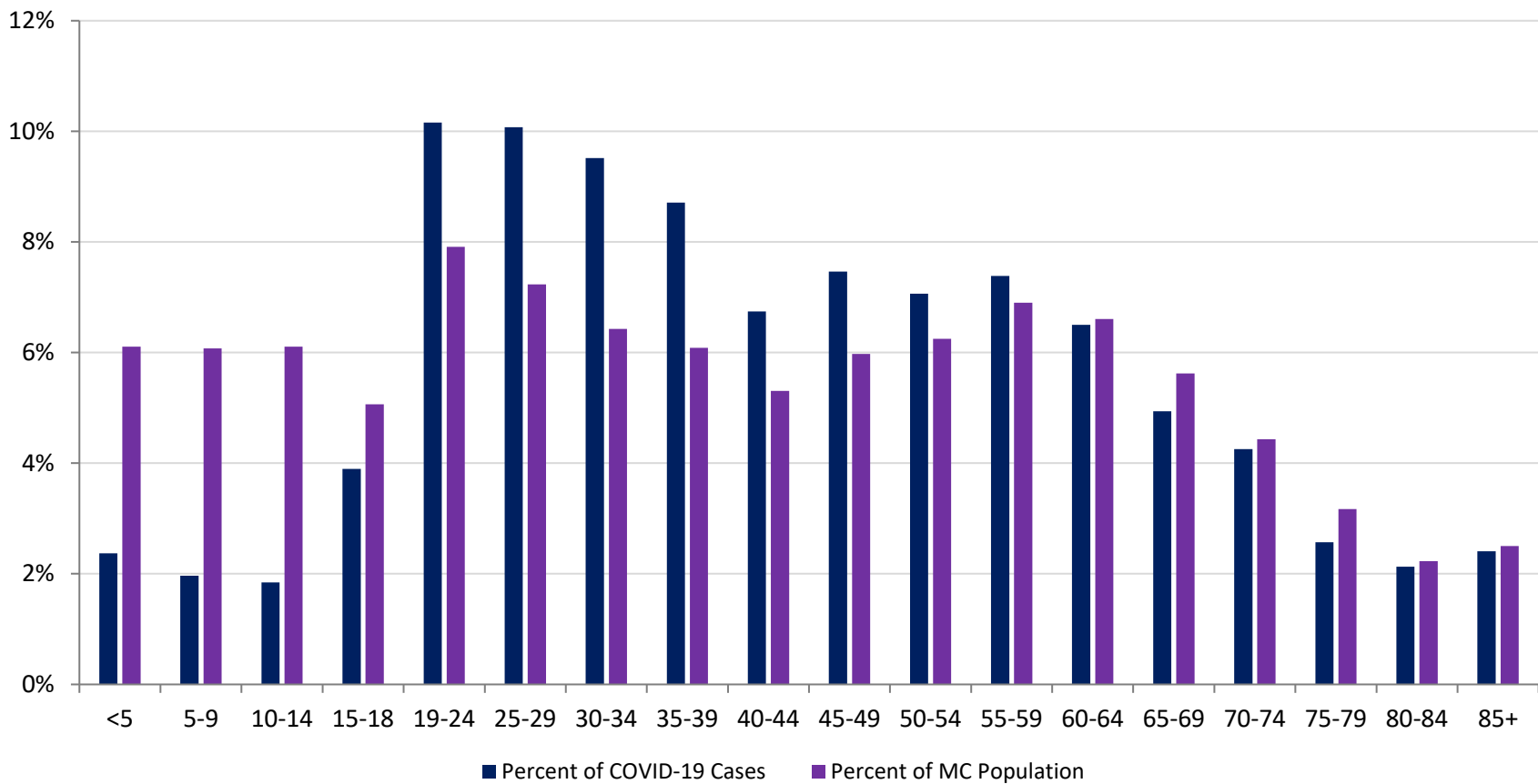


Montgomery County COVID-19 Cases by Health Care Worker Status As of 7/13/20		
Status	#	%
Health Care Worker	307	13.2%
Non-Health Care Worker	1,443	60.5%
Unknown	742	26.3%
Total	2,492	100%

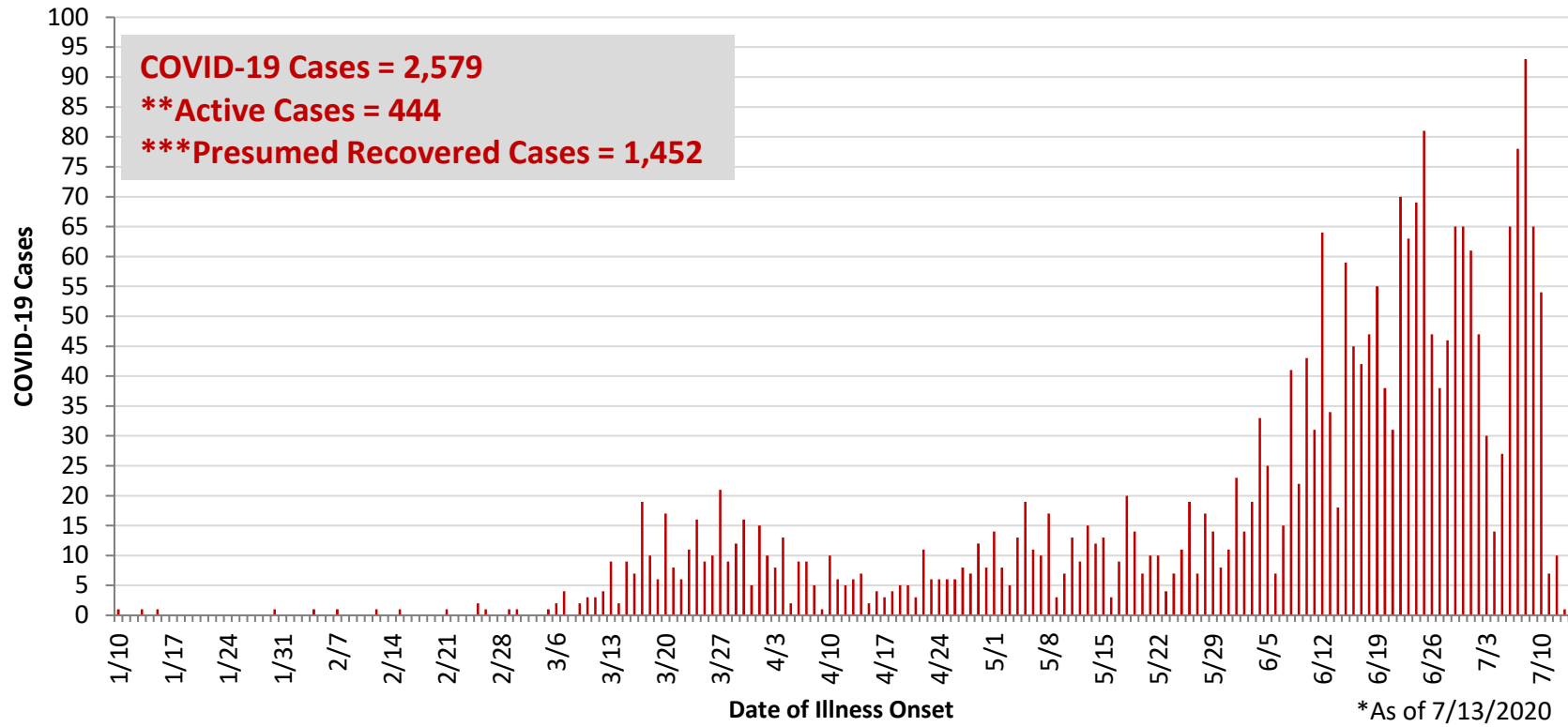
Montgomery County COVID-19 Cases Age Range As of 7/13/20	
Stat	Age in Years
Age Range	<1 - 104
Average Age	42.7
Median Age	40.0

Montgomery County COVID-19 Cases by Age Group As of 7/13/20				
Age Group	# Cases	Rate	Percent of COVID-19 Cases	Percent of MC Population
<5	59	181.4	2.4%	6.1%
5-9	49	151.6	2.0%	6.1%
10-14	46	141.5	1.8%	6.1%
15-18	97	359.8	3.9%	5.1%
19-24	253	600.6	10.2%	7.9%
25-29	251	652.0	10.1%	7.2%
30-34	237	692.8	9.5%	6.4%
35-39	217	669.6	8.7%	6.1%
40-44	168	594.6	6.7%	5.3%
45-49	186	584.9	7.5%	6.0%
50-54	176	529.3	7.1%	6.2%
55-59	184	501.0	7.4%	6.9%
60-64	162	460.7	6.5%	6.6%
65-69	123	411.0	4.9%	5.6%
70-74	106	449.0	4.3%	4.4%
75-79	64	379.3	2.6%	3.2%
80-84	53	447.0	2.1%	2.2%
85+	60	450.6	2.4%	2.5%
Total	2,491	467.9	100%	100%

Percent of Montgomery County COVID-19 Cases by Age Group vs Percent of Population by Age Group



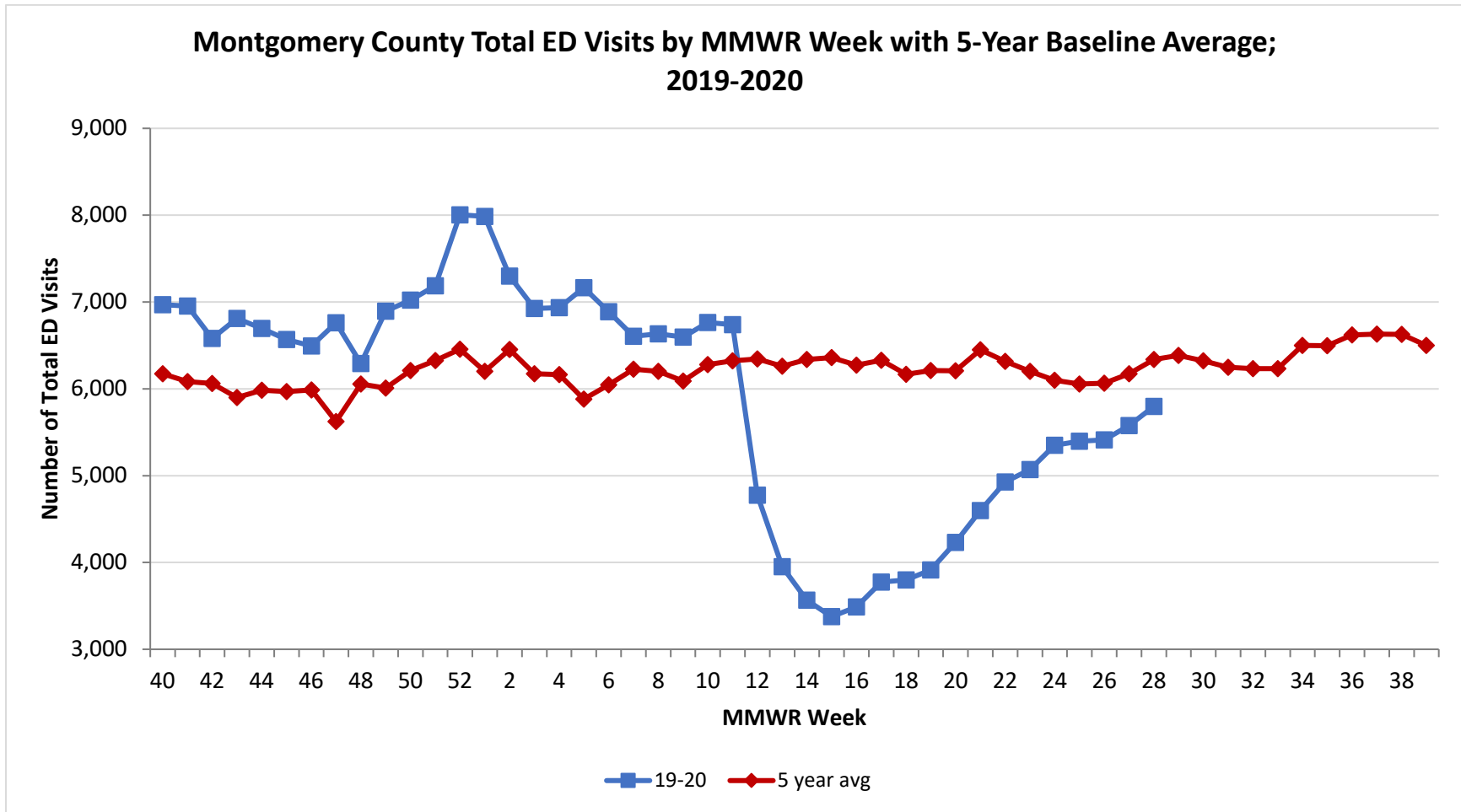
**PRELIMINARY COVID-19 Cases by Date of Illness Onset
Montgomery County, 1/10/20 - 7/13/20***



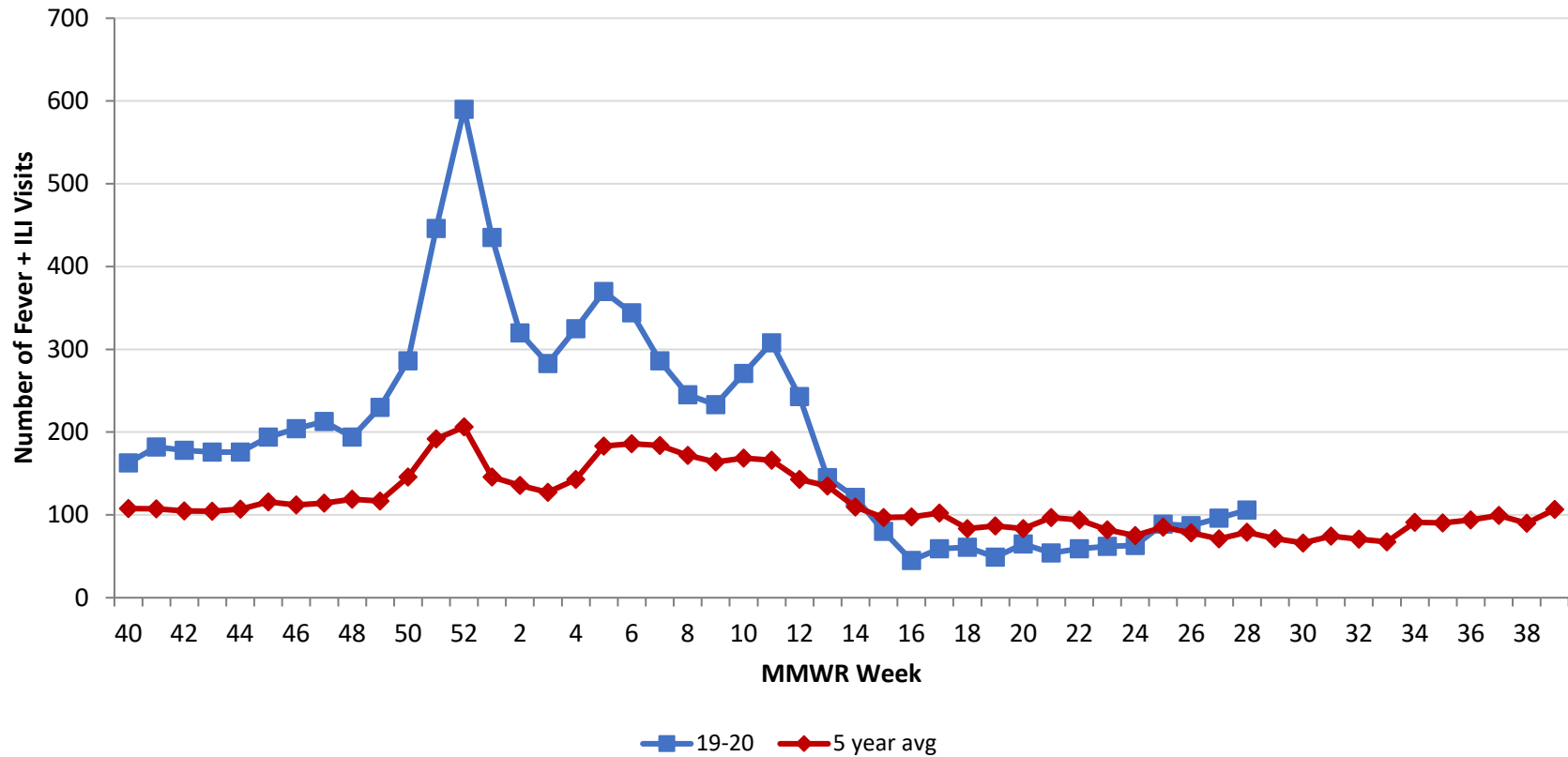
**Active cases are based on the reported illness onset date (using a 10-day window).

***Presumed recovered is defined as cases with a symptom onset date >21 days prior who are not deceased.

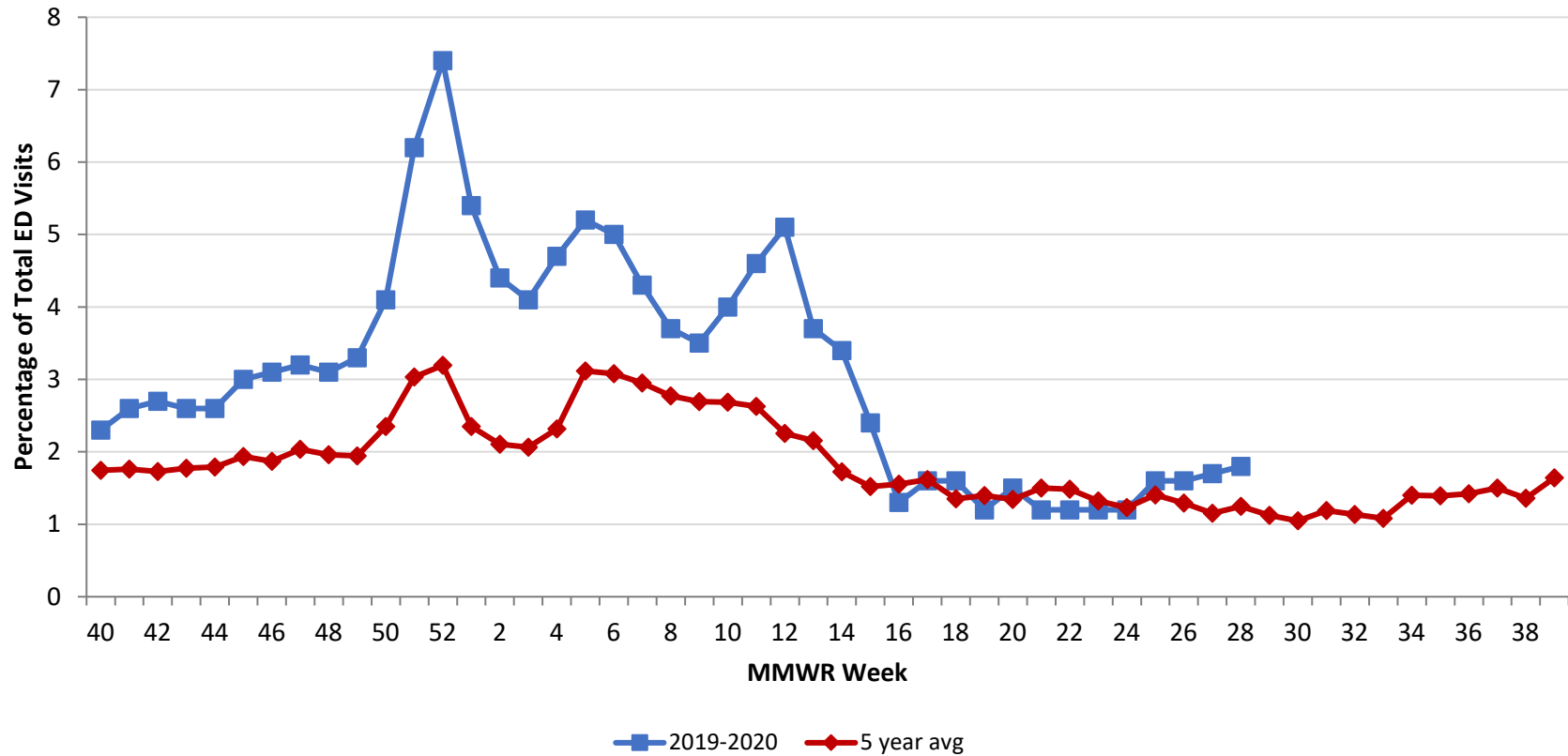
Source: EpiCenter Syndromic Surveillance, Health Monitoring Systems



Montgomery County Fever + ILI Specified ED Visits by MMWR Week with 5-Year Baseline Average; 2019-2020



Montgomery County Fever + ILI Specified ED Visits (% of Total Visits) by MMWR Week with 5-Year Baseline Average; 2019-2020



# Total Visits		
MMWR Week	19-20	5-Year Average
45	6,567	5968.0
46	6,494	5987.6
47	6,760	5622.8
48	6,292	6056.8
49	6,895	6008.0
50	7,022	6209.8
51	7,185	6324.4
52	8,005	6456.0
1	7,986	6200.8
2	7,297	6452.4
3	6,924	6172.9
4	6,935	6164.0
5	7,164	5881.8
6	6,888	6045.0
7	6,605	6226.8
8	6,633	6200.6
9	6,597	6088.2
10	6,763	6279.6
11	6,738	6321.6
12	4,775	6345.0
13	3,952	6259.8
14	3,565	6337.4
15	3,376	6360.6
16	3,489	6273.4
17	3,774	6327.8
18	3,798	6165.8
19	3,915	6209.8
20	4,231	6208.4
21	4,598	6,449.6
22	4,928	6,315.4
23	5,070	6,201.0
24	5,350	6,098.4
25	5,398	6,055.8
26	5,412	6,063.2
27	5,577	6,173.0
28	5,797	6,339.0

# Fever + ILI Visits		
MMWR Week	19-20	5-Year Average
45	194	115.6
46	204	112.0
47	213	114.4
48	194	118.8
49	230	116.8
50	286	145.8
51	446	191.8
52	590	206.2
1	435	145.8
2	320	135.8
3	283	127.4
4	325	142.8
5	370	183.2
6	344	186.2
7	286	183.8
8	245	171.8
9	233	164.0
10	271	168.6
11	308	166.2
12	243	143.0
13	145	134.8
14	121	109.4
15	80	96.8
16	45	97.6
17	59	102.4
18	61	83.4
19	49	86.8
20	65	83.4
21	54	96.8
22	59	93.8
23	62	82.0
24	63	75.0
25	89	85.2
26	87	78.4
27	96	71.2
28	106	79.2

% Fever + ILI Visits		
MMWR Week	19-20	5-Year Average
45	3.0	1.9
46	3.1	1.9
47	3.2	2.0
48	3.1	2.0
49	3.3	1.9
50	4.1	2.3
51	6.2	3.0
52	7.4	3.2
1	5.4	2.4
2	4.4	2.1
3	4.1	2.1
4	4.7	2.3
5	5.2	3.1
6	5	3.1
7	4.3	3.0
8	3.7	2.8
9	3.5	2.7
10	4	2.7
11	4.6	2.6
12	5.1	2.3
13	3.7	2.2
14	3.4	1.7
15	2.4	1.5
16	1.3	1.6
17	1.6	1.6
18	1.6	1.4
19	1.2	1.4
20	1.5	1.3
21	1.2	1.5
22	1.2	1.5
23	1.2	1.3
24	1.2	1.2
25	1.6	1.4
26	1.6	1.3
27	1.7	1.2
28	1.8	1.2