



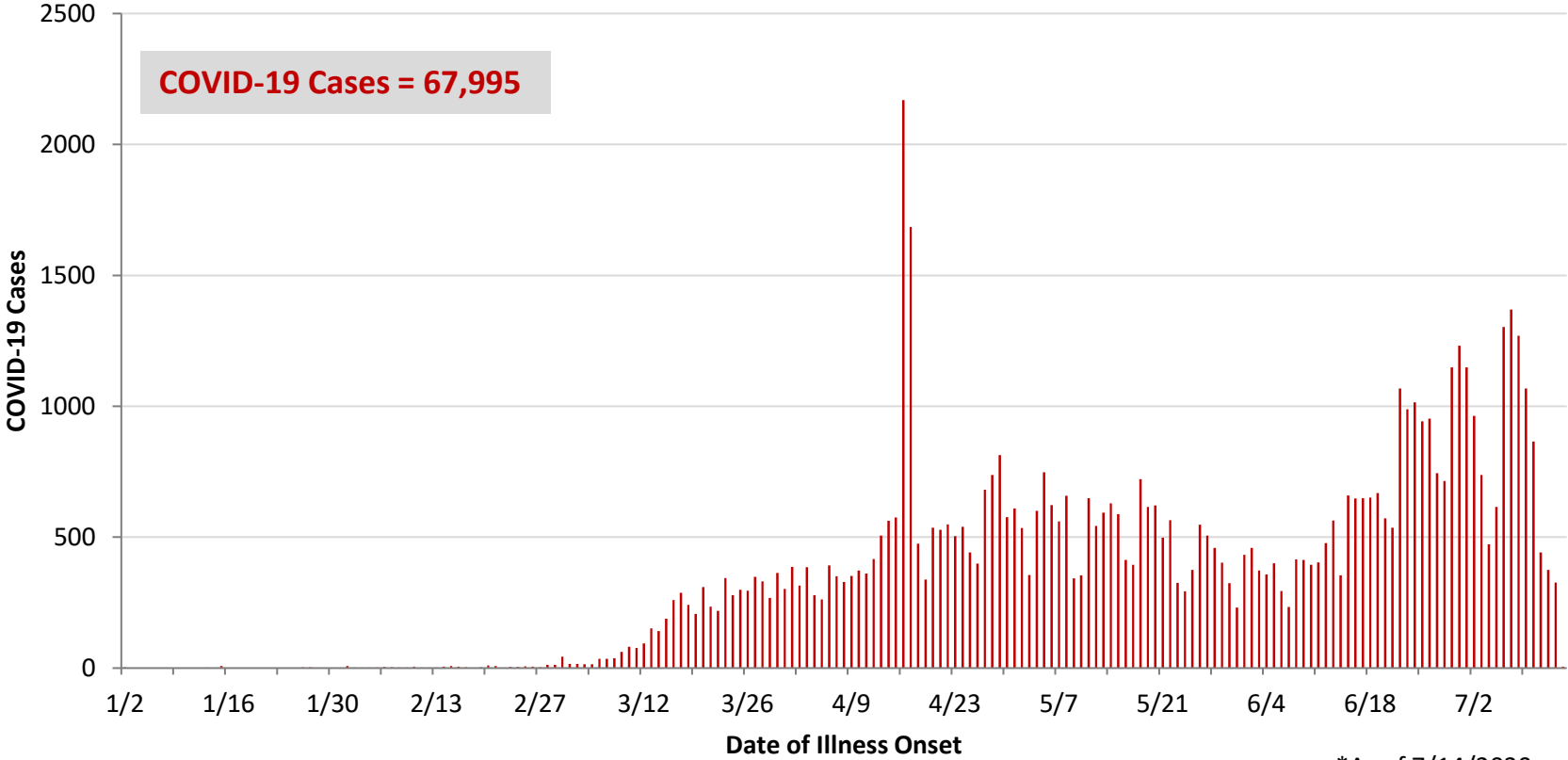
**Ohio, West Central Ohio (WCO), and Montgomery County COVID-19 Cases  
As of 7/14/20**

**Source:** The State of Ohio COVID-19 Dashboard, Ohio Department of Health

**Ohio:**

<b>Preliminary COVID-19 Cases Ohio, As of 7/14/2020</b>		
<b>Sex</b>	<b># Cases</b>	<b>% Cases</b>
Female	34,158	50%
Male	33,219	49%
Unknown	618	1%
<b>Total</b>	<b>67,995</b>	<b>100%</b>
<b>Age Group</b>		
<b>Age Group</b>	<b># Cases</b>	<b>% Cases</b>
0-19	5,299	8%
20-29	13,200	19%
30-39	11,447	17%
40-49	9,974	15%
50-59	10,047	15%
60-69	7,706	11%
70-79	4,965	7%
80+	5,295	8%
Unknown	62	0%
<b>Total</b>	<b>67,995</b>	<b>100%</b>
<b>Hospitalized</b>		
Hospitalized	9,049	13.3%
<b>Deaths</b>		
Deaths	3,069	4.5%
<b>Age Group</b>		
<b>Age Group</b>	<b>Deaths</b>	<b>% of Deaths</b>
0-19	2	0%
20-29	11	0%
30-39	23	1%
40-49	46	1%
50-59	189	6%
60-69	433	14%
70-79	756	25%
80+	1,609	52%
<b>Total</b>	<b>3,069</b>	<b>100%</b>

**PRELIMINARY COVID-19 Cases by Date of Illness Onset  
Ohio, 1/2/20 - 7/14/20\***

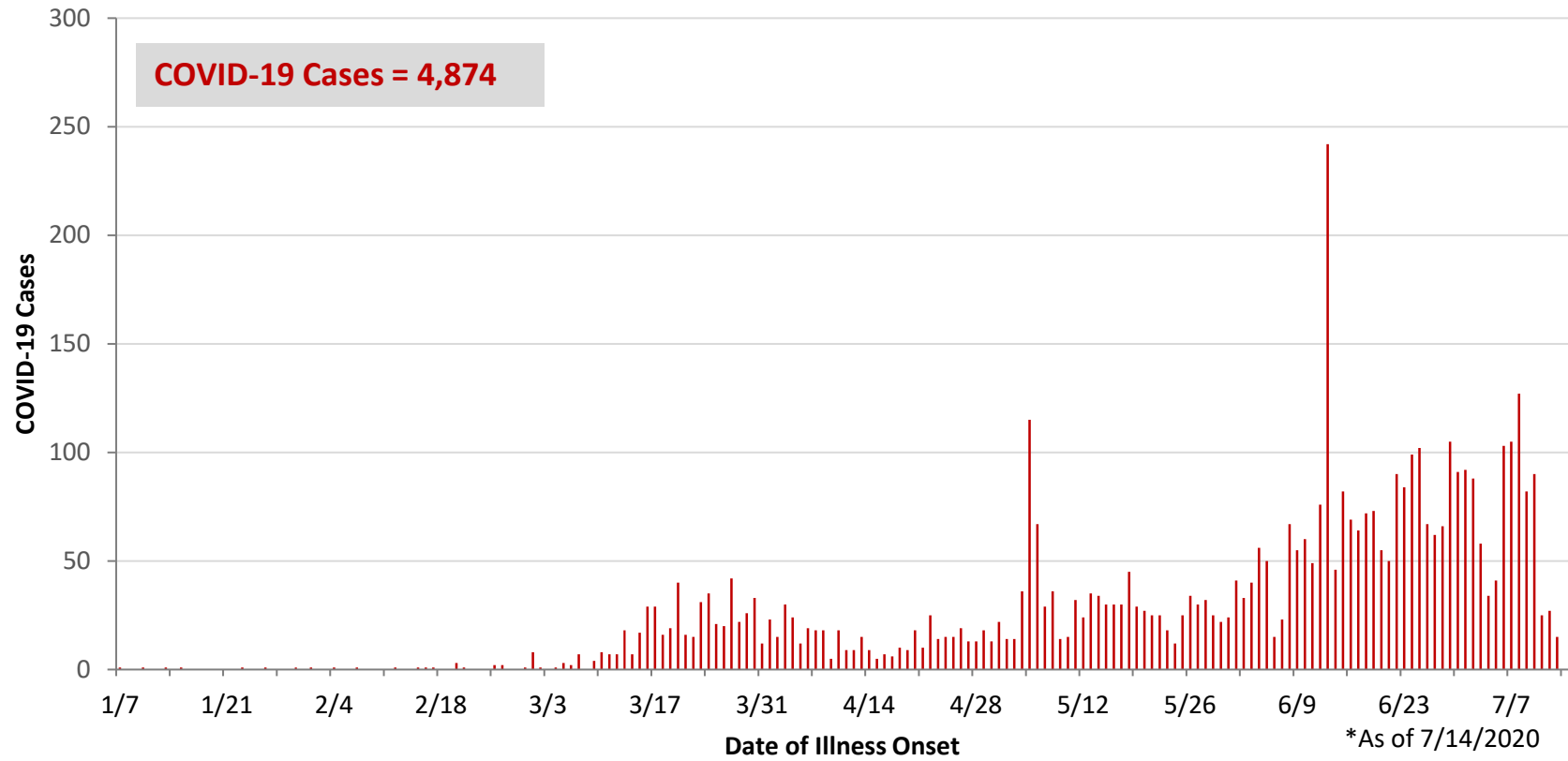


\*As of 7/14/2020

WCO:

Preliminary COVID-19 Cases West Central Ohio, As of 7/14/2020		
County	# Cases	% Cases
Champaign	60	1%
Clark	832	17%
Darke	261	5%
Greene	380	8%
Miami	520	11%
Montgomery	2,647	54%
Preble	96	2%
Shelby	78	2%
<b>Total</b>	<b>4,874</b>	<b>100%</b>
Sex		
Sex	# Cases	% Cases
Female	2,624	54%
Male	2,135	44%
Unknown	115	2%
<b>Total</b>	<b>4,874</b>	<b>100%</b>
Age Group		
Age Group	# Cases	% Cases
0-19	504	10%
20-29	954	20%
30-39	838	17%
40-49	657	13%
50-59	684	14%
60-69	570	12%
70-79	347	7%
80+	320	7%
<b>Total</b>	<b>4,874</b>	<b>100%</b>
Hospitalized	640	13.1%
Deaths	119	2.4%
Age Group		
Age Group	Deaths	% of Deaths
0-19	0	0%
20-29	1	1%
30-39	2	2%
40-49	2	2%
50-59	8	7%
60-69	18	15%
70-79	19	16%
80+	69	58%
<b>Total</b>	<b>119</b>	<b>100%</b>

**PRELIMINARY COVID-19 Cases by Date of Illness Onset  
West Central Ohio, 1/7/20 - 7/14/20\***



**Montgomery County:**

<b>Preliminary COVID-19 Cases Montgomery County, As of 7/14/2020</b>		
<b>Sex</b>	<b># Cases</b>	<b>% Cases</b>
Female	1,468	55%
Male	1,155	44%
Unknown	24	1%
<b>Total</b>	<b>2,647</b>	<b>100%</b>
<b>Age Group</b>		
<b>Age Group</b>	<b># Cases</b>	<b>% Cases</b>
0-19	311	12%
20-29	503	19%
30-39	476	18%
40-49	372	14%
50-59	376	14%
60-69	304	11%
70-79	180	7%
80+	125	5%
<b>Total</b>	<b>2,647</b>	<b>100%</b>
Hospitalized	399	15.1%
Deaths	37	1.4%
<b>Age Group</b>	<b>Deaths</b>	<b>% of Deaths</b>
0-19	0	0%
20-29	1	3%
30-39	1	3%
40-49	2	5%
50-59	5	14%
60-69	9	24%
70-79	4	11%
80+	15	41%
<b>Total</b>	<b>37</b>	<b>100%</b>

<b>Age Group</b>	<b>Hospitalizations</b>	<b>% of Age Group Cases</b>
0-19	17	5.5%
20-29	21	4.2%
30-39	37	7.8%
40-49	50	13.4%
50-59	74	19.7%
60-69	86	28.3%
70-79	69	38.3%
80+	45	36.0%
<b>Total</b>	<b>399</b>	<b>15.1%</b>

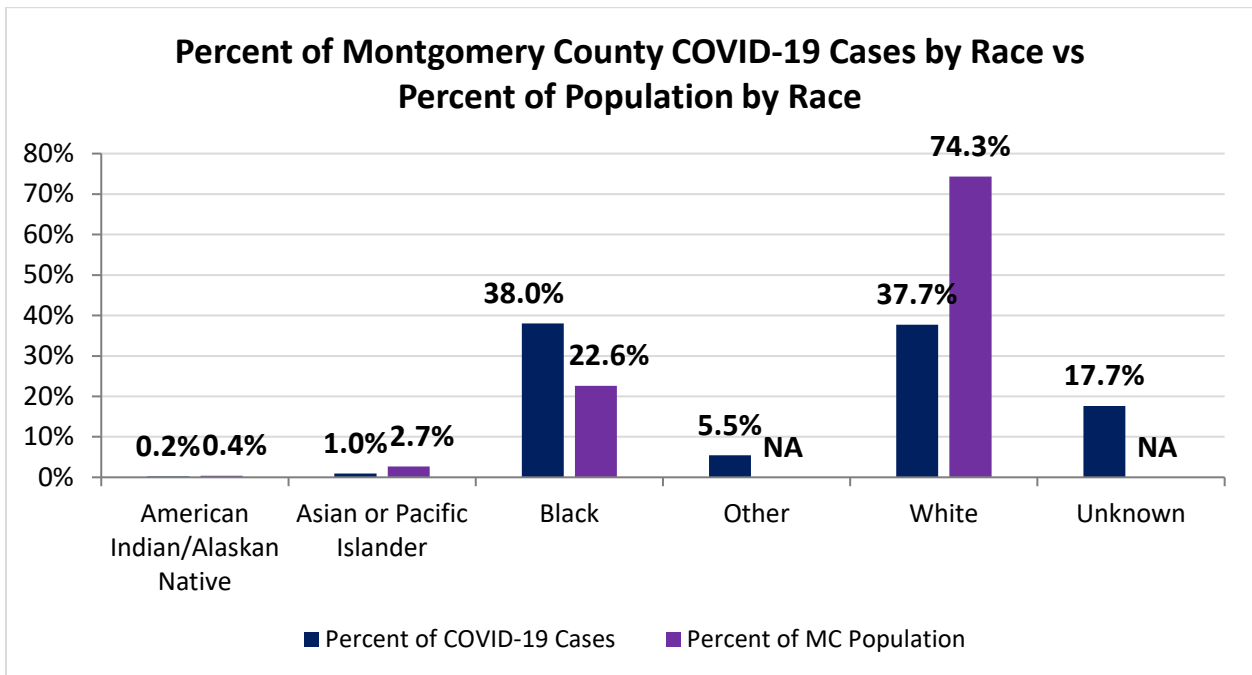
Source: Ohio Disease Reporting System, ODH

Montgomery County COVID-19 Cases by Race As of 7/13/20				
Race	Count	Percent	Rate	Rate Interpretation**
American Indian/Alaskan Native (AI/AN)*	5	0.2%	232.8	1 in 430
Asian	24	1.0%	168.7	1 in 593
Black	948	38.0%	787.6	1 in 127
Other	136	5.5%	NA	NA
White	939	37.7%	237.4	1 in 421
Unknown	440	17.7%	NA	NA
<b>Total</b>	<b>2,492</b>	<b>100%</b>	<b>468.1</b>	<b>1 in 214</b>

\*Note. AI/ANs account for 0.4% of Montgomery County’s population, and therefore, rates for this population will be large and may be misleading.

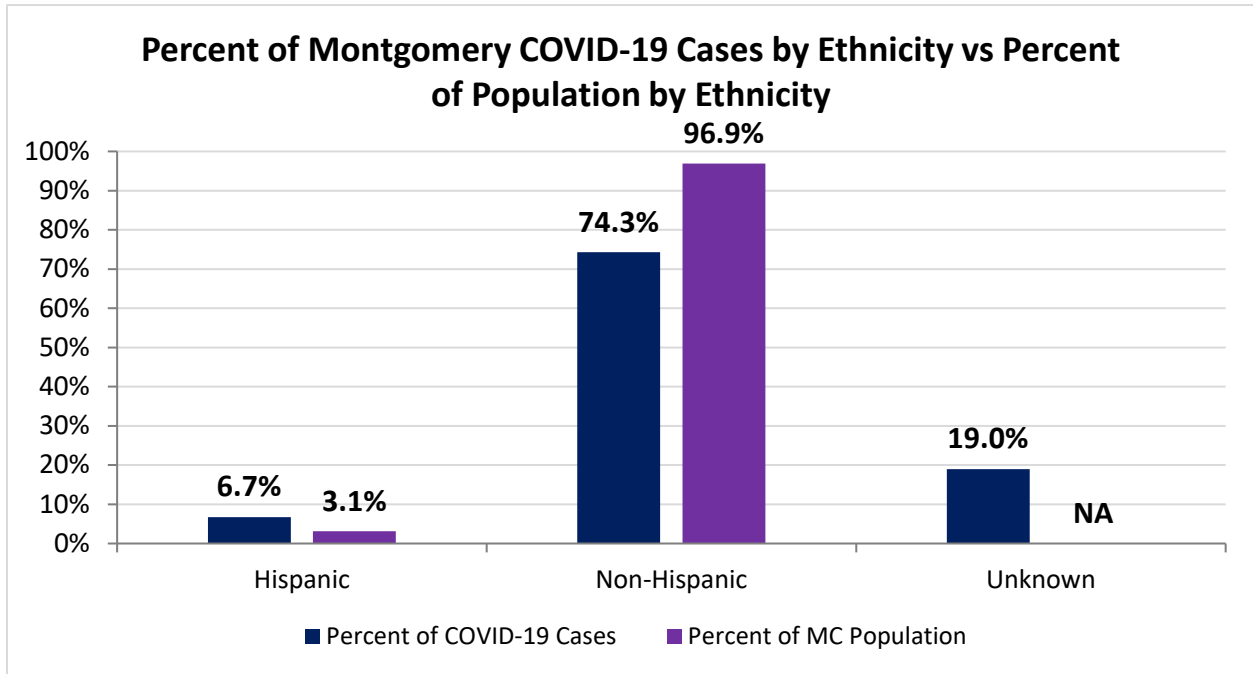
\*\*Rate interpretation represents the number of cases for the given population.

Example - there is a total of 1 case for every 214 Montgomery County residents.



<b>Montgomery County COVID-19 Cases by Ethnicity As of 7/13/20</b>				
<b>Ethnicity</b>	<b>Count</b>	<b>Percent</b>	<b>Rate</b>	<b>Rate Interpretation**</b>
Hispanic	157	6.7%	953.8	1 in 105
Non-Hispanic	1810	74.3%	350.9	1 in 285
Unknown	525	19.0%	NA	NA
<b>Total</b>	<b>2,492</b>	<b>100%</b>	<b>468.1</b>	<b>1 in 214</b>

\*\*Rate interpretation represents the number of cases for the given population.  
 Example - there is a total of 1 case for every 214 Montgomery County residents.



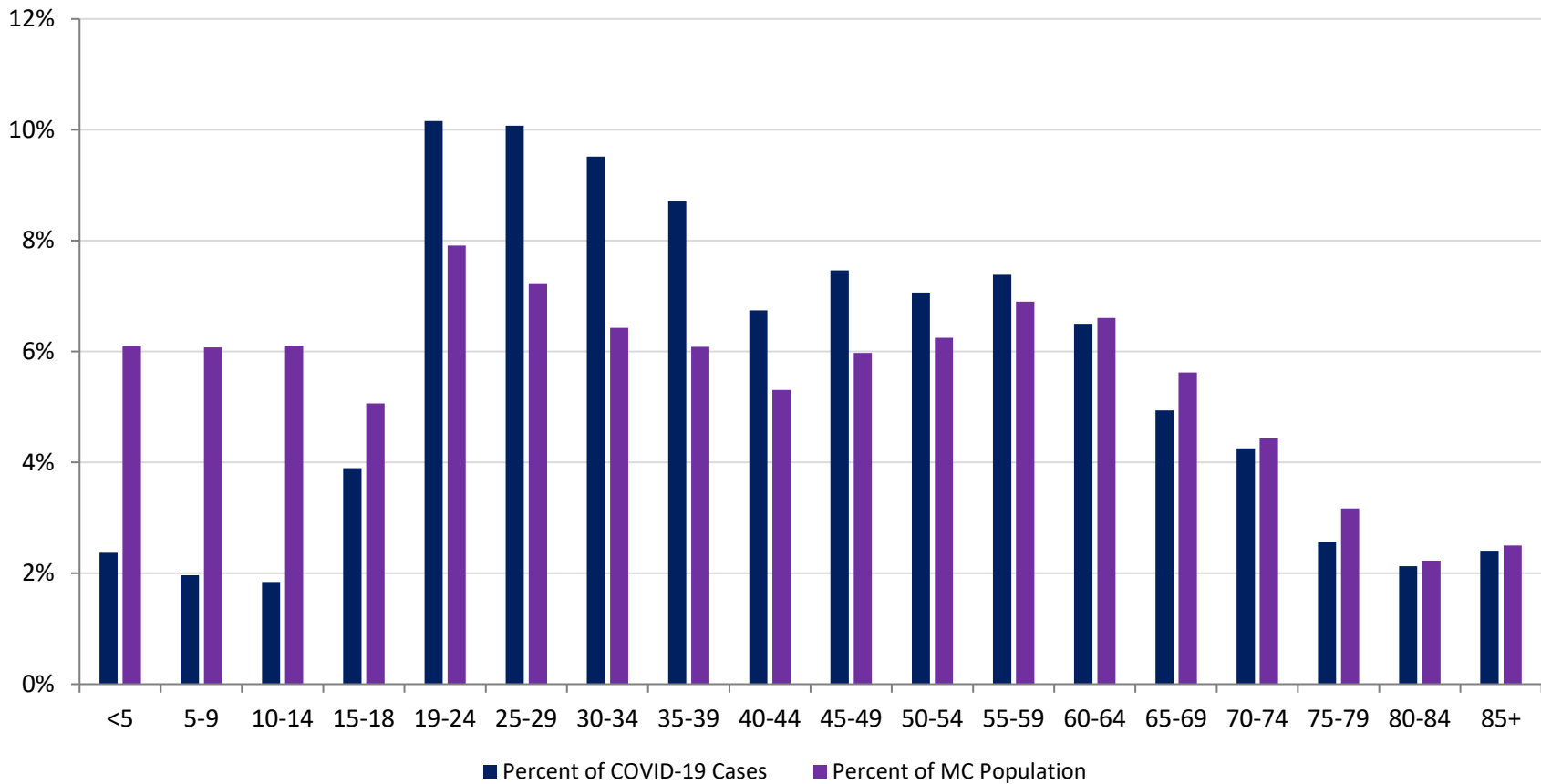
<b>Montgomery County COVID-19 Cases by Health Care Worker Status As of 7/13/20</b>		
<b>Status</b>	<b>#</b>	<b>%</b>
Health Care Worker	307	13.2%
Non-Health Care Worker	1,443	60.5%
Unknown	742	26.3%
<b>Total</b>	<b>2,492</b>	<b>100%</b>

<b>Montgomery County COVID-19 Cases Age Range As of 7/13/20</b>	
<b>Stat</b>	<b>Age in Years</b>
Age Range	<1 - 104
Average Age	42.7
Median Age	40.0

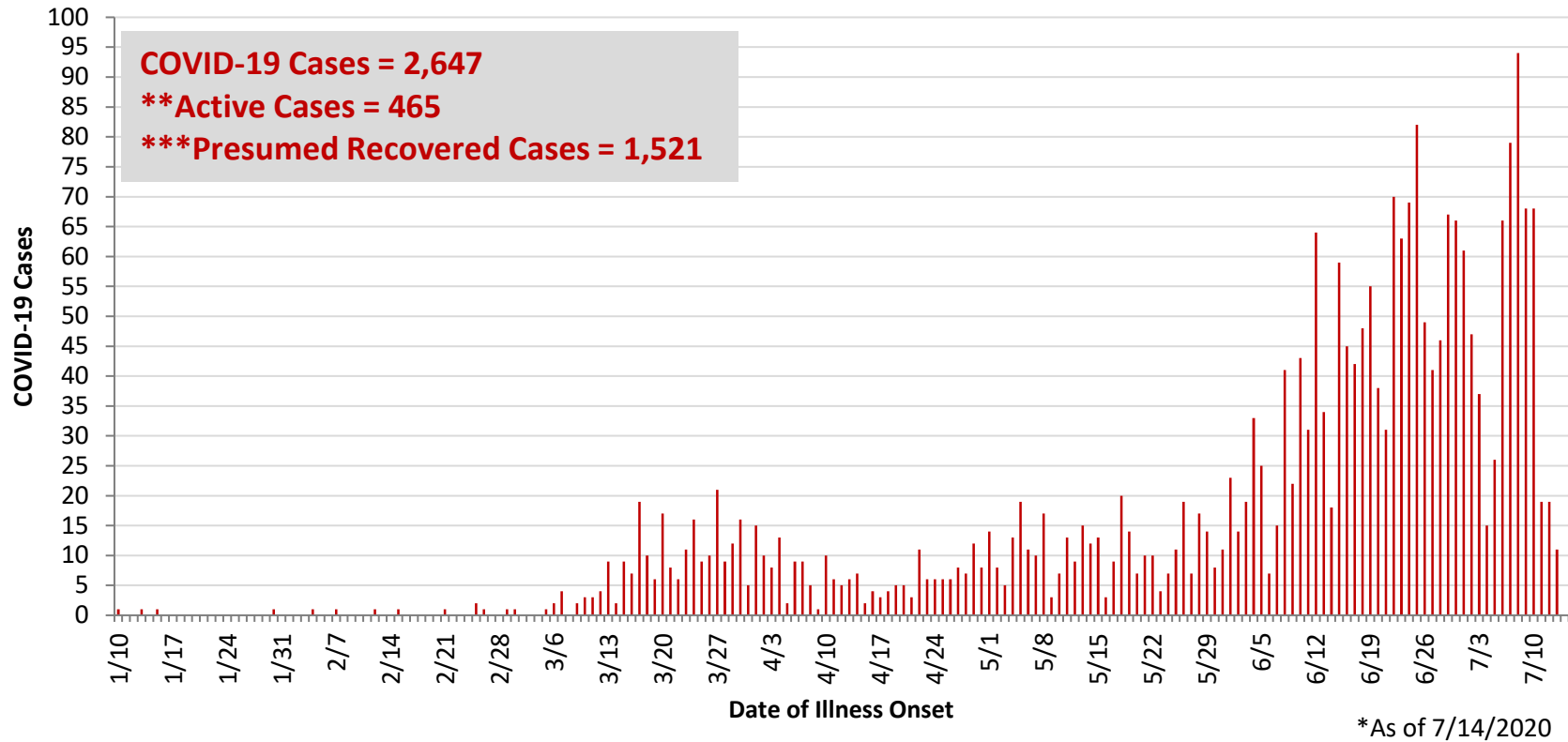
<b>Montgomery County COVID-19 Cases by Age Group As of 7/13/20</b>				
<b>Age Group</b>	<b># Cases</b>	<b>Rate</b>	<b>Percent of COVID-19 Cases</b>	<b>Percent of MC Population</b>
<5	59	181.4	2.4%	6.1%
5-9	49	151.6	2.0%	6.1%
10-14	46	141.5	1.8%	6.1%
15-18	97	359.8	3.9%	5.1%
19-24	253	600.6	10.2%	7.9%
25-29	251	652.0	10.1%	7.2%
30-34	237	692.8	9.5%	6.4%
35-39	217	669.6	8.7%	6.1%
40-44	168	594.6	6.7%	5.3%
45-49	186	584.9	7.5%	6.0%
50-54	176	529.3	7.1%	6.2%
55-59	184	501.0	7.4%	6.9%
60-64	162	460.7	6.5%	6.6%
65-69	123	411.0	4.9%	5.6%
70-74	106	449.0	4.3%	4.4%
75-79	64	379.3	2.6%	3.2%
80-84	53	447.0	2.1%	2.2%
85+	60	450.6	2.4%	2.5%
<b>Total</b>	<b>2,491</b>	<b>467.9</b>	<b>100%</b>	<b>100%</b>



**Percent of Montgomery County COVID-19 Cases by Age Group vs Percent of Population by Age Group**



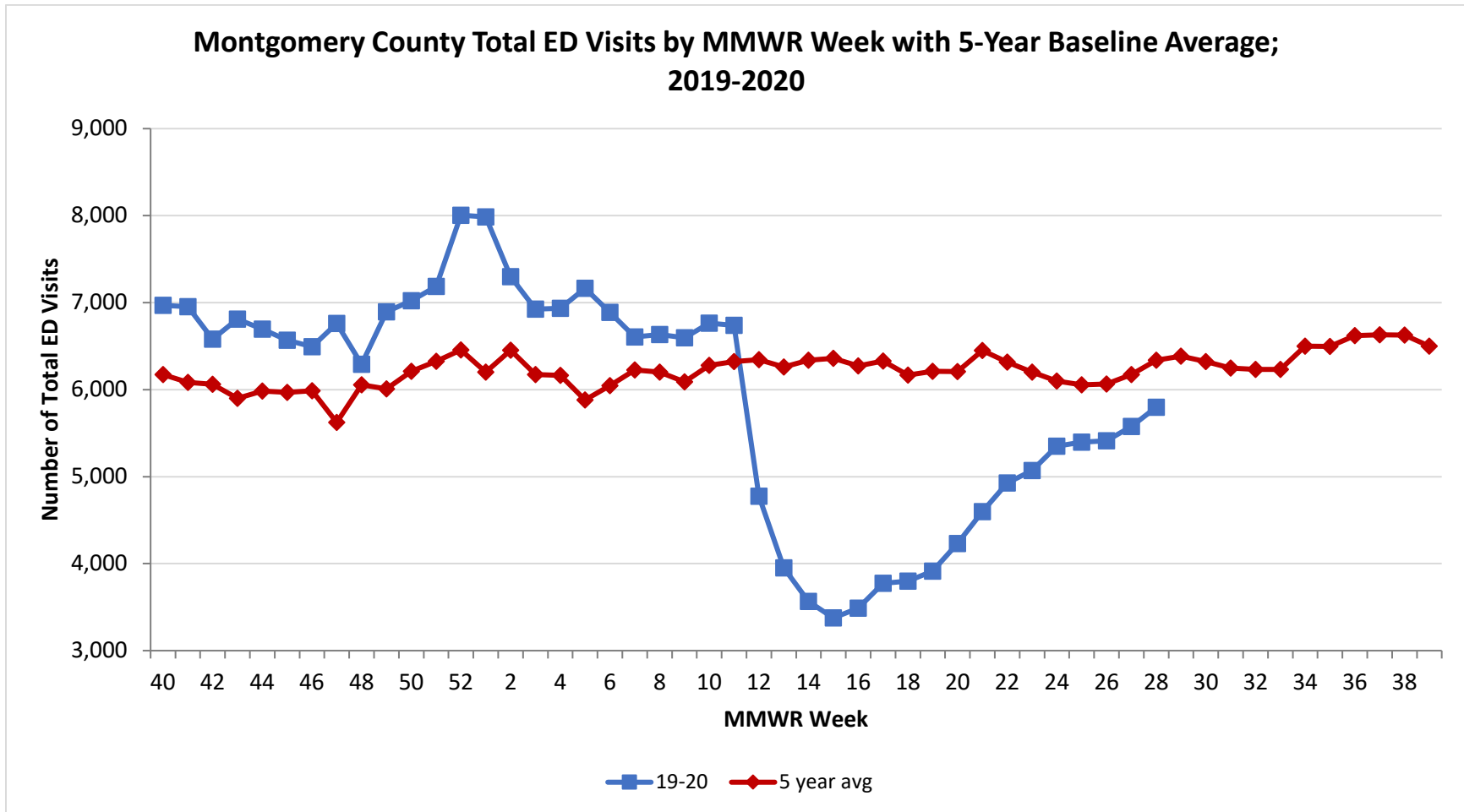
**PRELIMINARY COVID-19 Cases by Date of Illness Onset  
Montgomery County, 1/10/20 - 7/14/20\***



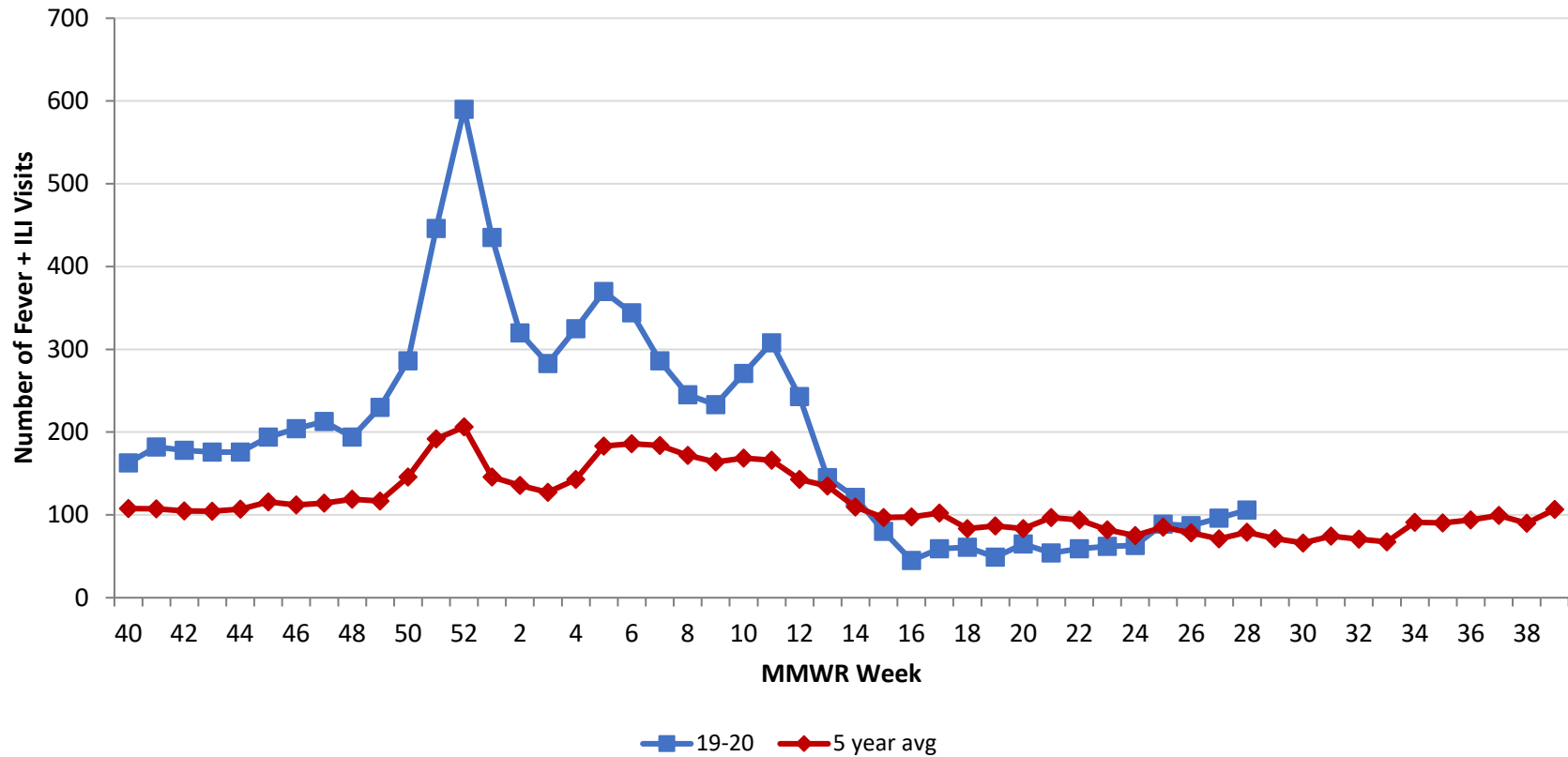
\*\*Active cases are based on the reported illness onset date (using a 10-day window).

\*\*\*Presumed recovered is defined as cases with a symptom onset date >21 days prior who are not deceased.

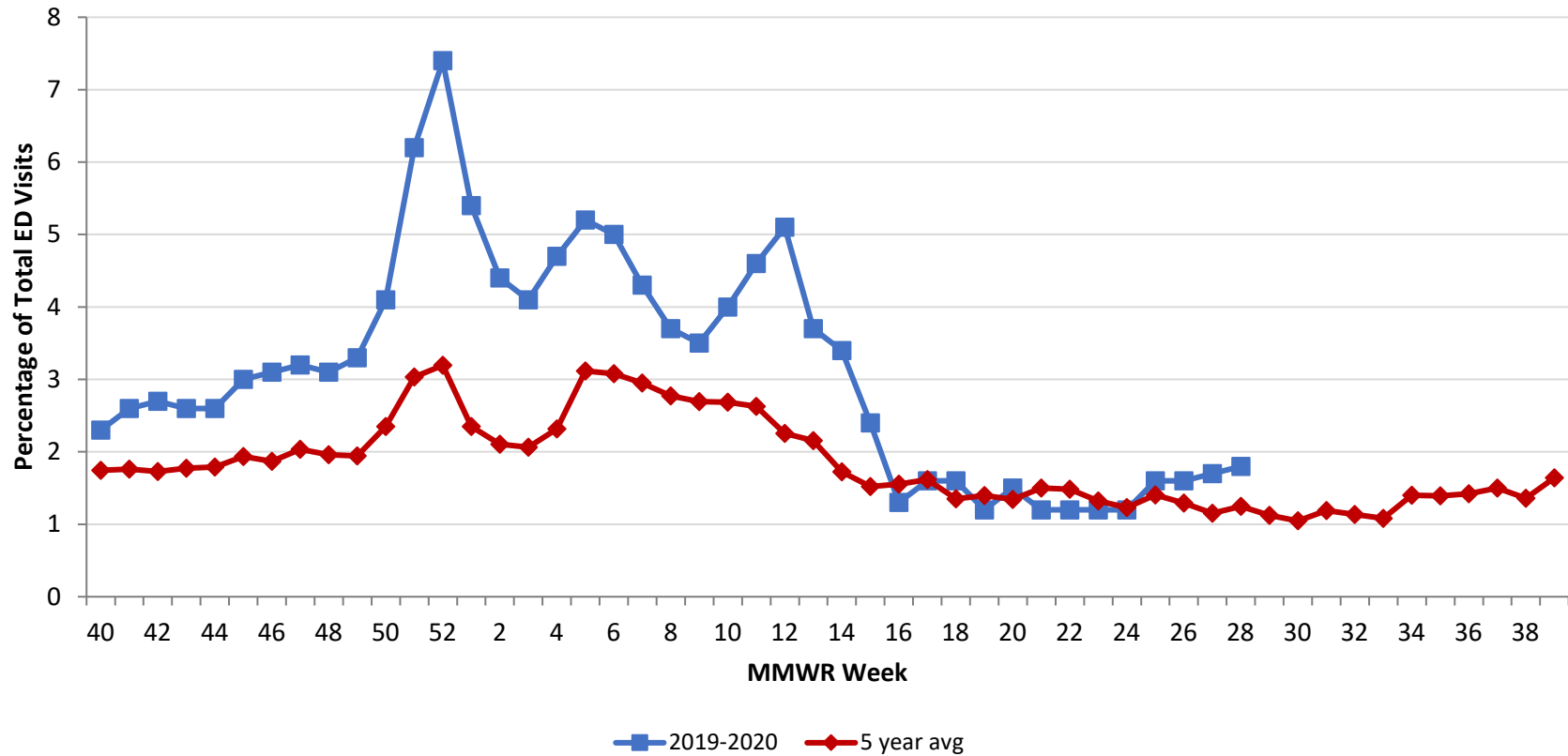
Source: EpiCenter Syndromic Surveillance, Health Monitoring Systems



Montgomery County Fever + ILI Specified ED Visits by MMWR Week with 5-Year Baseline Average; 2019-2020



**Montgomery County Fever + ILI Specified ED Visits (% of Total Visits) by MMWR Week  
with 5-Year Baseline Average; 2019-2020**



# Total Visits		
MMWR Week	19-20	5-Year Average
45	6,567	5968.0
46	6,494	5987.6
47	6,760	5622.8
48	6,292	6056.8
49	6,895	6008.0
50	7,022	6209.8
51	7,185	6324.4
52	8,005	6456.0
1	7,986	6200.8
2	7,297	6452.4
3	6,924	6172.9
4	6,935	6164.0
5	7,164	5881.8
6	6,888	6045.0
7	6,605	6226.8
8	6,633	6200.6
9	6,597	6088.2
10	6,763	6279.6
11	6,738	6321.6
12	4,775	6345.0
13	3,952	6259.8
14	3,565	6337.4
15	3,376	6360.6
16	3,489	6273.4
17	3,774	6327.8
18	3,798	6165.8
19	3,915	6209.8
20	4,231	6208.4
21	4,598	6,449.6
22	4,928	6,315.4
23	5,070	6,201.0
24	5,350	6,098.4
25	5,398	6,055.8
26	5,412	6,063.2
27	5,577	6,173.0
28	5,797	6,339.0

# Fever + ILI Visits		
MMWR Week	19-20	5-Year Average
45	194	115.6
46	204	112.0
47	213	114.4
48	194	118.8
49	230	116.8
50	286	145.8
51	446	191.8
52	590	206.2
1	435	145.8
2	320	135.8
3	283	127.4
4	325	142.8
5	370	183.2
6	344	186.2
7	286	183.8
8	245	171.8
9	233	164.0
10	271	168.6
11	308	166.2
12	243	143.0
13	145	134.8
14	121	109.4
15	80	96.8
16	45	97.6
17	59	102.4
18	61	83.4
19	49	86.8
20	65	83.4
21	54	96.8
22	59	93.8
23	62	82.0
24	63	75.0
25	89	85.2
26	87	78.4
27	96	71.2
28	106	79.2

% Fever + ILI Visits		
MMWR Week	19-20	5-Year Average
45	3.0	1.9
46	3.1	1.9
47	3.2	2.0
48	3.1	2.0
49	3.3	1.9
50	4.1	2.3
51	6.2	3.0
52	7.4	3.2
1	5.4	2.4
2	4.4	2.1
3	4.1	2.1
4	4.7	2.3
5	5.2	3.1
6	5	3.1
7	4.3	3.0
8	3.7	2.8
9	3.5	2.7
10	4	2.7
11	4.6	2.6
12	5.1	2.3
13	3.7	2.2
14	3.4	1.7
15	2.4	1.5
16	1.3	1.6
17	1.6	1.6
18	1.6	1.4
19	1.2	1.4
20	1.5	1.3
21	1.2	1.5
22	1.2	1.5
23	1.2	1.3
24	1.2	1.2
25	1.6	1.4
26	1.6	1.3
27	1.7	1.2
28	1.8	1.2