



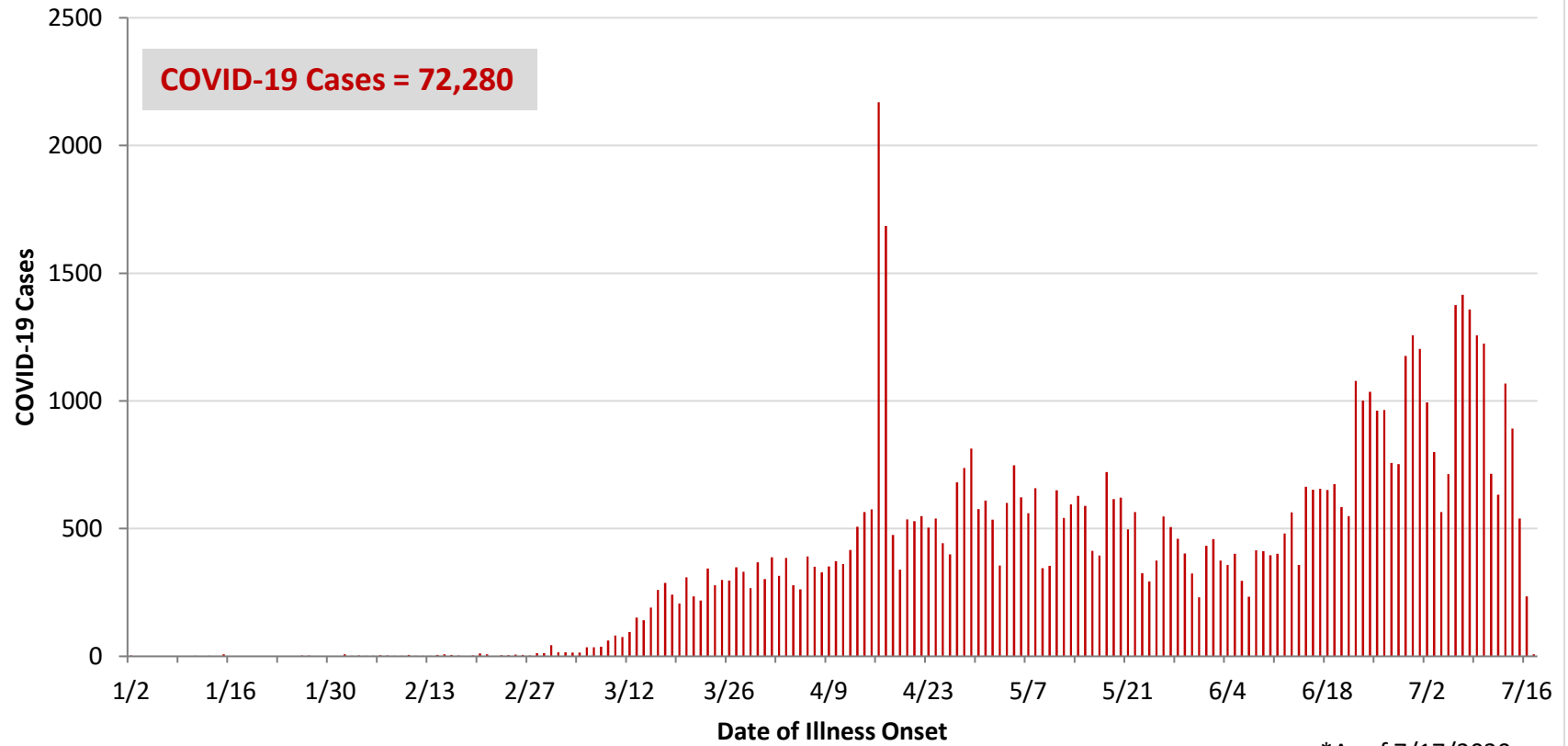
**Ohio, West Central Ohio (WCO), and Montgomery County COVID-19 Cases  
As of 7/17/20**

**Source:** The State of Ohio COVID-19 Dashboard, Ohio Department of Health

**Ohio:**

<b>Preliminary COVID-19 Cases Ohio, As of 7/17/2020</b>		
<b>Sex</b>	<b># Cases</b>	<b>% Cases</b>
Female	36,500	50%
Male	35,155	49%
Unknown	625	1%
<b>Total</b>	<b>72,280</b>	<b>100%</b>
<b>Age Group</b>		
<b>Age Group</b>	<b># Cases</b>	<b>% Cases</b>
0-19	5,846	8%
20-29	14,355	20%
30-39	12,166	17%
40-49	10,533	15%
50-59	10,626	15%
60-69	8,098	11%
70-79	5,162	7%
80+	5,427	8%
Unknown	67	0%
<b>Total</b>	<b>72,280</b>	<b>100%</b>
<b>Hospitalized</b>		
Hospitalized	9,445	13.1%
<b>Deaths</b>		
Deaths	3,112	4.3%
<b>Age Group</b>		
<b>Age Group</b>	<b>Deaths</b>	<b>% of Deaths</b>
0-19	2	0%
20-29	11	0%
30-39	23	1%
40-49	49	2%
50-59	195	6%
60-69	436	14%
70-79	768	25%
80+	1,628	52%
<b>Total</b>	<b>3,112</b>	<b>100%</b>

**PRELIMINARY COVID-19 Cases by Date of Illness Onset  
Ohio, 1/2/20 - 7/17/20\***

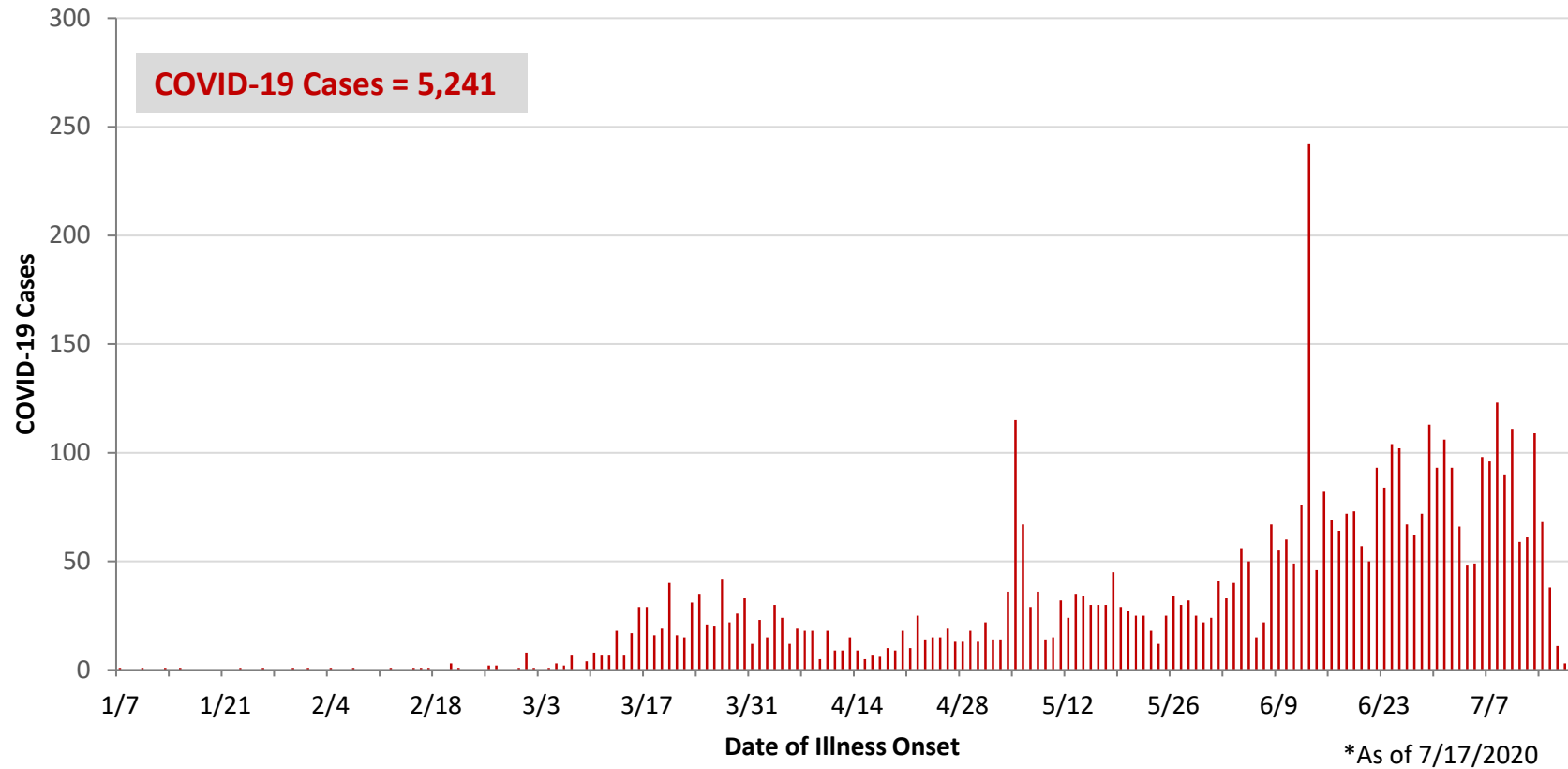


\*As of 7/17/2020

WCO:

Preliminary COVID-19 Cases West Central Ohio, As of 7/17/2020		
County	# Cases	% Cases
Champaign	65	1%
Clark	868	17%
Darke	263	5%
Greene	432	8%
Miami	561	11%
Montgomery	2,867	55%
Preble	104	2%
Shelby	81	2%
<b>Total</b>	<b>5,241</b>	<b>100%</b>
Sex		
Sex	# Cases	% Cases
Female	2,837	54%
Male	2,283	44%
Unknown	121	2%
<b>Total</b>	<b>5,241</b>	<b>100%</b>
Age Group		
Age Group	# Cases	% Cases
0-19	551	11%
20-29	1038	20%
30-39	902	17%
40-49	706	13%
50-59	726	14%
60-69	606	12%
70-79	372	7%
80+	340	6%
<b>Total</b>	<b>5,241</b>	<b>100%</b>
Hospitalized	681	13.0%
Deaths	127	2.4%
Age Group		
Age Group	Deaths	% of Deaths
0-19	0	0%
20-29	1	1%
30-39	2	2%
40-49	2	2%
50-59	10	8%
60-69	20	16%
70-79	21	17%
80+	71	56%
<b>Total</b>	<b>127</b>	<b>100%</b>

**PRELIMINARY COVID-19 Cases by Date of Illness Onset  
West Central Ohio, 1/7/20 - 7/17/20\***



**Montgomery County:**

<b>Preliminary COVID-19 Cases Montgomery County, As of 7/17/2020</b>		
<b>Sex</b>	<b># Cases</b>	<b>% Cases</b>
Female	1,593	56%
Male	1,243	43%
Unknown	31	1%
<b>Total</b>	<b>2,867</b>	<b>100%</b>
<b>Age Group</b>		
<b>Age Group</b>	<b># Cases</b>	<b>% Cases</b>
0-19	342	12%
20-29	552	19%
30-39	513	18%
40-49	403	14%
50-59	397	14%
60-69	321	11%
70-79	198	7%
80+	141	5%
<b>Total</b>	<b>2,867</b>	<b>100%</b>
<b>Hospitalized</b>		
Hospitalized	426	14.9%
<b>Deaths</b>		
Deaths	44	1.5%
<b>Age Group</b>	<b>Deaths</b>	<b>% of Deaths</b>
0-19	0	0%
20-29	1	2%
30-39	1	2%
40-49	2	5%
50-59	6	14%
60-69	11	25%
70-79	6	14%
80+	17	39%
<b>Total</b>	<b>44</b>	<b>100%</b>

<b>Age Group</b>	<b>Hospitalizations</b>	<b>% of Age Group Cases</b>
0-19	18	5.3%
20-29	23	4.2%
30-39	39	7.6%
40-49	52	12.9%
50-59	75	18.9%
60-69	93	29.0%
70-79	76	38.4%
80+	50	35.5%
<b>Total</b>	<b>426</b>	<b>14.9%</b>

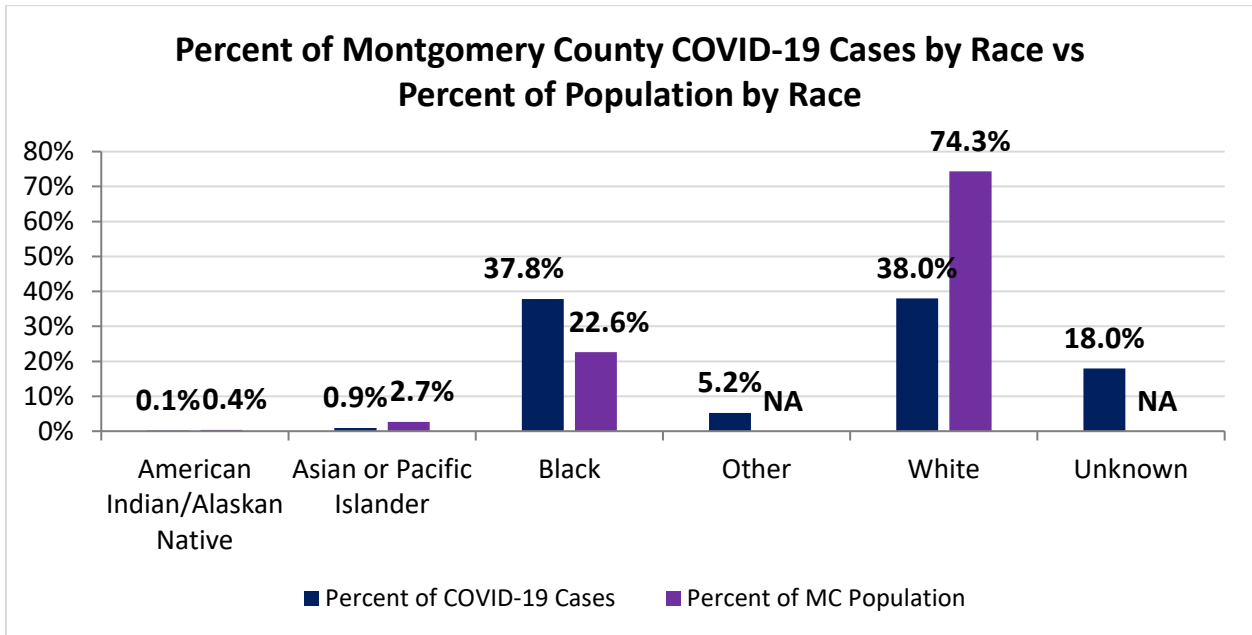
Source: Ohio Disease Reporting System, ODH

Montgomery County COVID-19 Cases by Race As of 7/16/20				
Race	Count	Percent	Rate	Rate Interpretation**
American Indian/Alaskan Native (AI/AN)*	4	0.1%	186.2	1 in 537
Asian	24	0.9%	168.7	1 in 593
Black	1,047	37.8%	869.9	1 in 115
Other	144	5.2%	NA	NA
White	1,051	38.0%	265.7	1 in 376
Unknown	497	18.0%	NA	NA
<b>Total</b>	<b>2,767</b>	<b>100%</b>	<b>519.8</b>	<b>1 in 192</b>

\*Note. AI/ANs account for 0.4% of Montgomery County’s population, and therefore, rates for this population will be large and may be misleading.

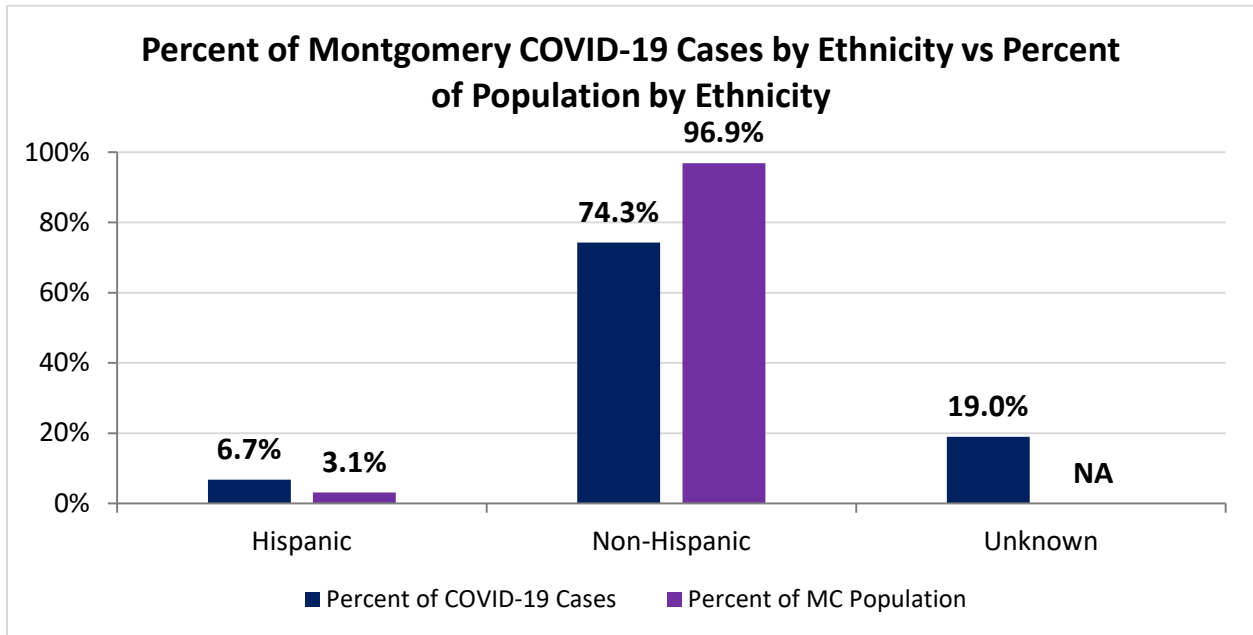
\*\*Rate interpretation represents the number of cases for the given population.

Example - there is a total of 1 case for every 192 Montgomery County residents.



<b>Montgomery County COVID-19 Cases by Ethnicity As of 7/16/20</b>				
<b>Ethnicity</b>	<b>Count</b>	<b>Percent</b>	<b>Rate</b>	<b>Rate Interpretation**</b>
Hispanic	164	6.7%	996.4	1 in 100
Non-Hispanic	2,033	74.3%	394.1	1 in 254
Unknown	570	19.0%	NA	NA
<b>Total</b>	<b>2,767</b>	<b>100%</b>	<b>519.8</b>	<b>1 in 192</b>

\*\*Rate interpretation represents the number of cases for the given population.  
 Example - there is a total of 1 case for every 192 Montgomery County residents.



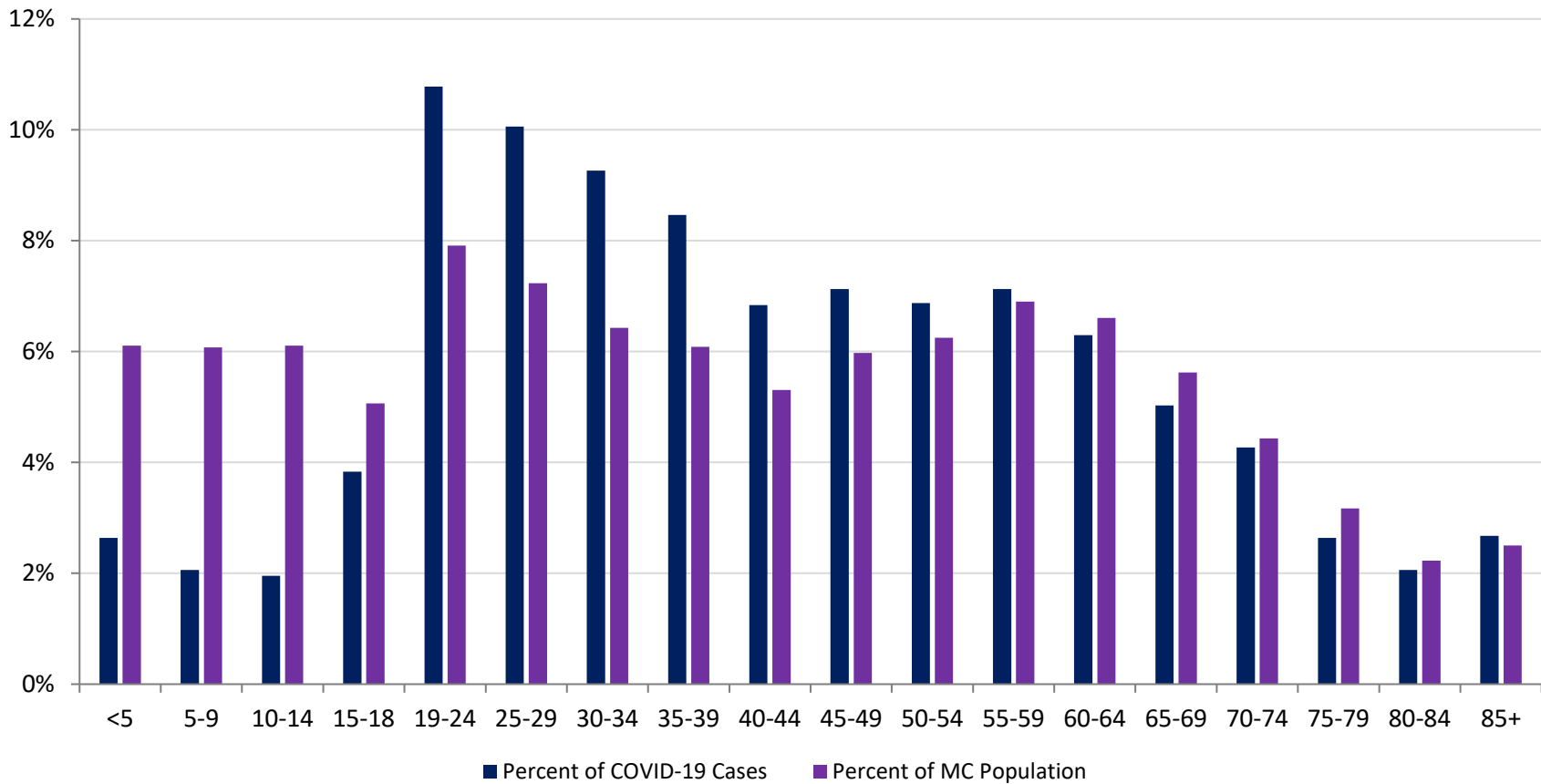
<b>Montgomery County COVID-19 Cases by Health Care Worker Status As of 7/16/20</b>		
<b>Status</b>	<b>#</b>	<b>%</b>
Health Care Worker	327	13.2%
Non-Health Care Worker	1,586	60.5%
Unknown	854	26.3%
<b>Total</b>	<b>2,767</b>	<b>100%</b>

<b>Montgomery County COVID-19 Cases Age Range As of 7/16/20</b>	
<b>Stat</b>	<b>Age in Years</b>
Age Range	<1 - 104
Average Age	42.5
Median Age	40.0

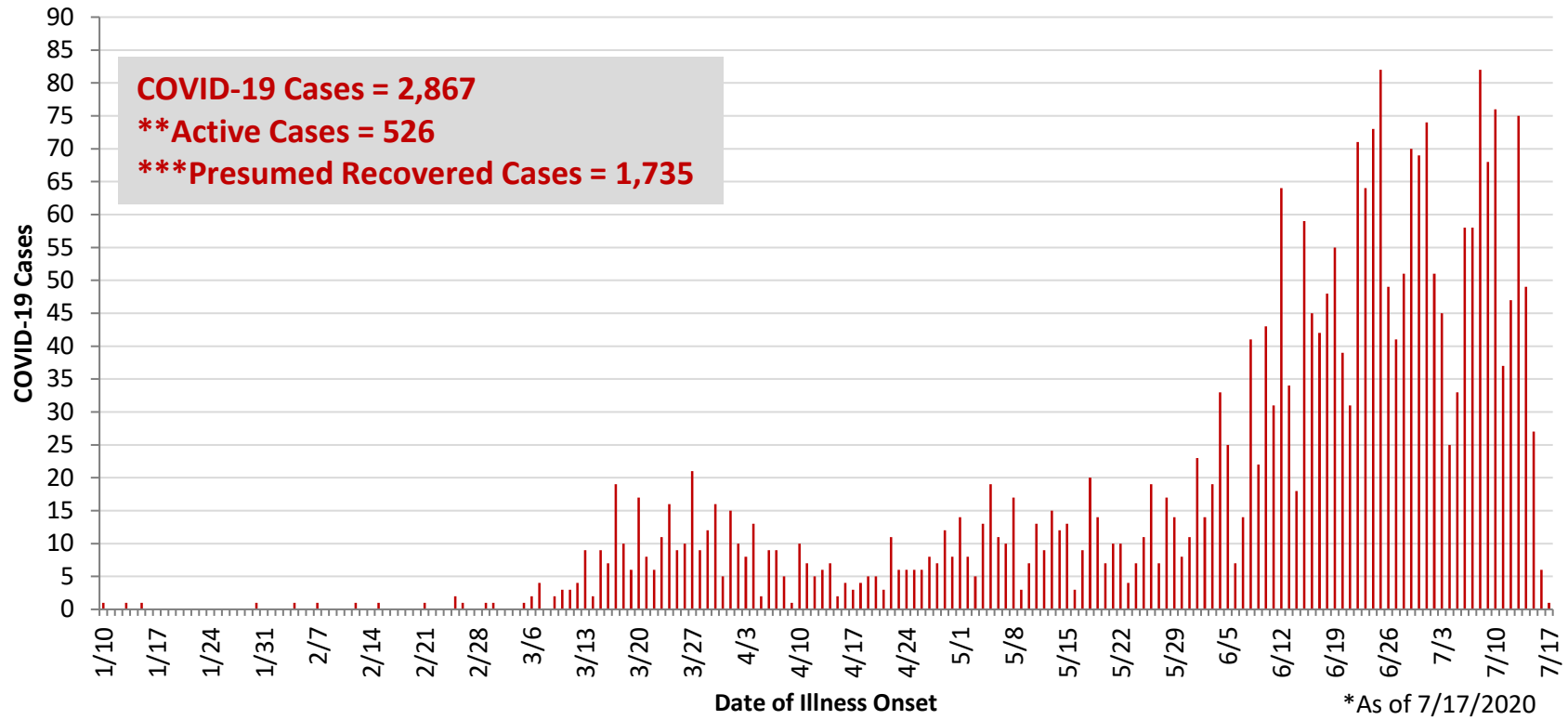
<b>Montgomery County COVID-19 Cases by Age Group As of 7/16/20</b>				
<b>Age Group</b>	<b># Cases</b>	<b>Rate</b>	<b>Percent of COVID-19 Cases</b>	<b>Percent of MC Population</b>
<5	73	224.5	2.6%	6.1%
5-9	57	176.3	2.1%	6.1%
10-14	54	166.1	2.0%	6.1%
15-18	106	393.2	3.8%	5.1%
19-24	298	707.4	10.8%	7.9%
25-29	278	722.2	10.1%	7.2%
30-34	256	748.3	9.3%	6.4%
35-39	234	722.0	8.5%	6.1%
40-44	189	669.0	6.8%	5.3%
45-49	197	619.5	7.1%	6.0%
50-54	190	571.4	6.9%	6.2%
55-59	197	536.4	7.1%	6.9%
60-64	174	494.8	6.3%	6.6%
65-69	139	464.5	5.0%	5.6%
70-74	118	499.8	4.3%	4.4%
75-79	73	432.6	2.6%	3.2%
80-84	57	480.7	2.1%	2.2%
85+	74	555.7	2.7%	2.5%
<b>Total</b>	<b>2,764</b>	<b>519.2</b>	<b>100%</b>	<b>100%</b>



**Percent of Montgomery County COVID-19 Cases by Age Group vs Percent of Population by Age Group**



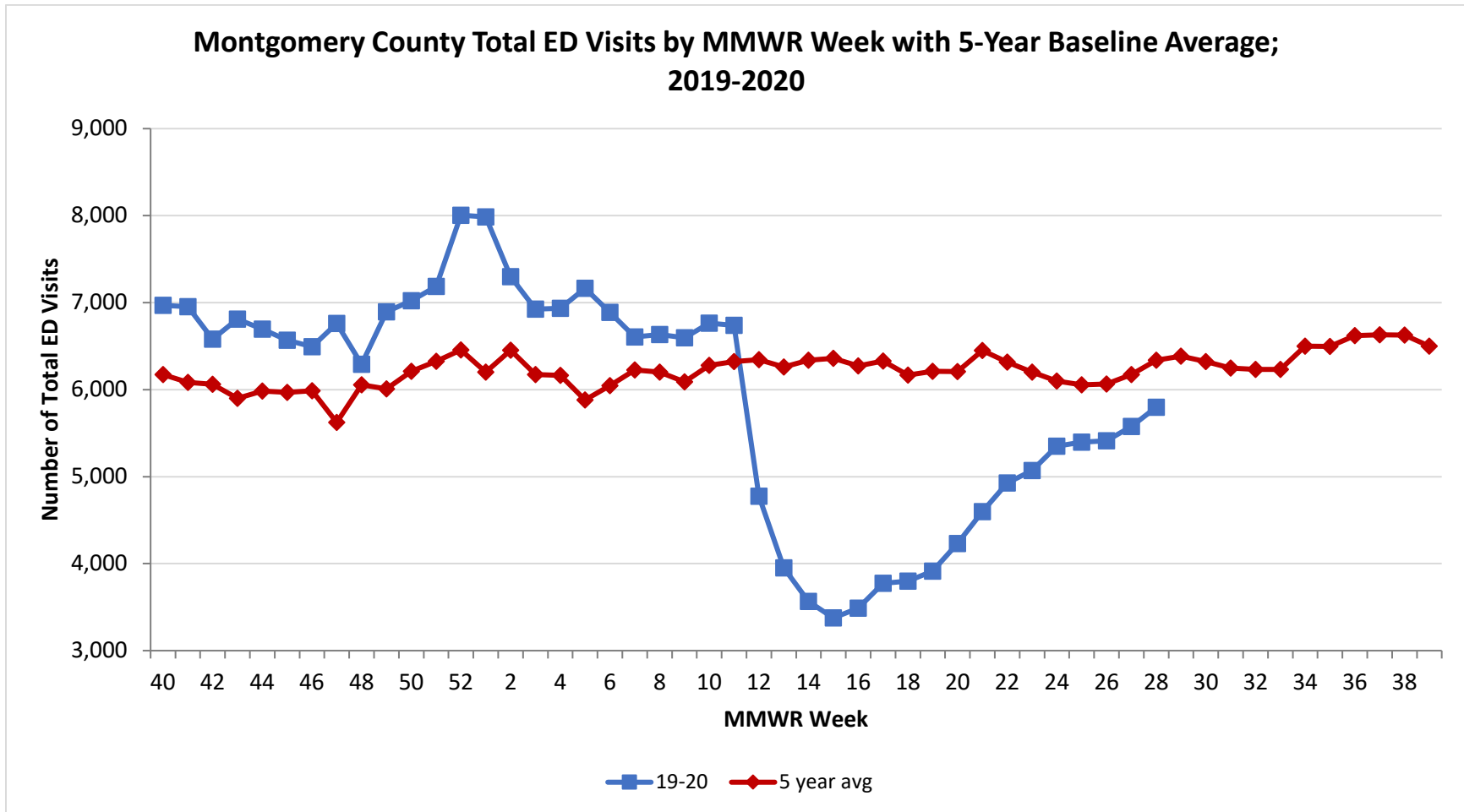
**PRELIMINARY COVID-19 Cases by Date of Illness Onset  
Montgomery County, 1/10/20 - 7/17/20\***



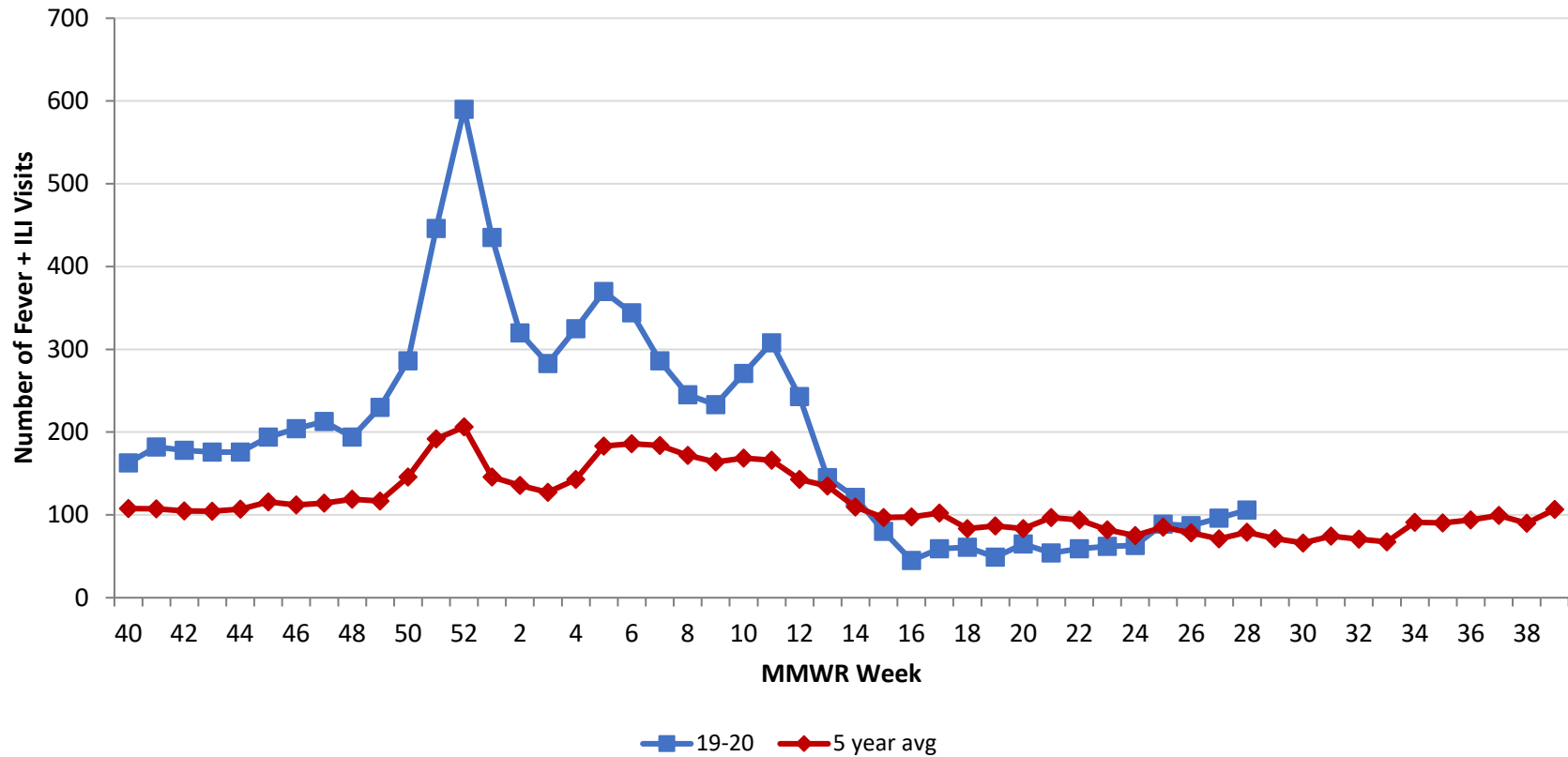
\*\*Active cases are based on the reported illness onset date (using a 10-day window).

\*\*\*Presumed recovered is defined as cases with a symptom onset date >21 days prior who are not deceased.

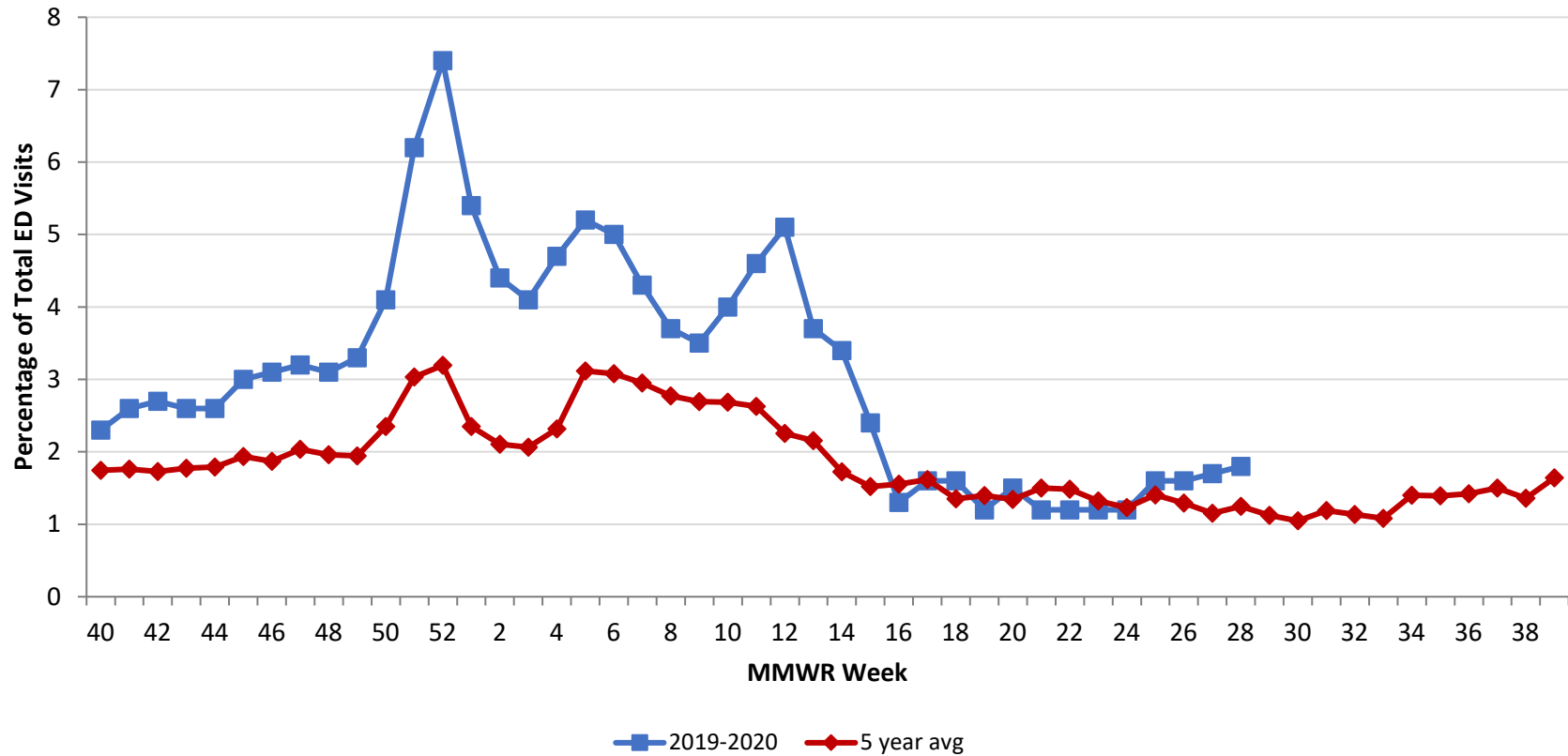
Source: EpiCenter Syndromic Surveillance, Health Monitoring Systems



Montgomery County Fever + ILI Specified ED Visits by MMWR Week with 5-Year Baseline Average; 2019-2020



**Montgomery County Fever + ILI Specified ED Visits (% of Total Visits) by MMWR Week  
with 5-Year Baseline Average; 2019-2020**



# Total Visits		
MMWR Week	19-20	5-Year Average
45	6,567	5968.0
46	6,494	5987.6
47	6,760	5622.8
48	6,292	6056.8
49	6,895	6008.0
50	7,022	6209.8
51	7,185	6324.4
52	8,005	6456.0
1	7,986	6200.8
2	7,297	6452.4
3	6,924	6172.9
4	6,935	6164.0
5	7,164	5881.8
6	6,888	6045.0
7	6,605	6226.8
8	6,633	6200.6
9	6,597	6088.2
10	6,763	6279.6
11	6,738	6321.6
12	4,775	6345.0
13	3,952	6259.8
14	3,565	6337.4
15	3,376	6360.6
16	3,489	6273.4
17	3,774	6327.8
18	3,798	6165.8
19	3,915	6209.8
20	4,231	6208.4
21	4,598	6,449.6
22	4,928	6,315.4
23	5,070	6,201.0
24	5,350	6,098.4
25	5,398	6,055.8
26	5,412	6,063.2
27	5,577	6,173.0
28	5,797	6,339.0

# Fever + ILI Visits		
MMWR Week	19-20	5-Year Average
45	194	115.6
46	204	112.0
47	213	114.4
48	194	118.8
49	230	116.8
50	286	145.8
51	446	191.8
52	590	206.2
1	435	145.8
2	320	135.8
3	283	127.4
4	325	142.8
5	370	183.2
6	344	186.2
7	286	183.8
8	245	171.8
9	233	164.0
10	271	168.6
11	308	166.2
12	243	143.0
13	145	134.8
14	121	109.4
15	80	96.8
16	45	97.6
17	59	102.4
18	61	83.4
19	49	86.8
20	65	83.4
21	54	96.8
22	59	93.8
23	62	82.0
24	63	75.0
25	89	85.2
26	87	78.4
27	96	71.2
28	106	79.2

% Fever + ILI Visits		
MMWR Week	19-20	5-Year Average
45	3.0	1.9
46	3.1	1.9
47	3.2	2.0
48	3.1	2.0
49	3.3	1.9
50	4.1	2.3
51	6.2	3.0
52	7.4	3.2
1	5.4	2.4
2	4.4	2.1
3	4.1	2.1
4	4.7	2.3
5	5.2	3.1
6	5	3.1
7	4.3	3.0
8	3.7	2.8
9	3.5	2.7
10	4	2.7
11	4.6	2.6
12	5.1	2.3
13	3.7	2.2
14	3.4	1.7
15	2.4	1.5
16	1.3	1.6
17	1.6	1.6
18	1.6	1.4
19	1.2	1.4
20	1.5	1.3
21	1.2	1.5
22	1.2	1.5
23	1.2	1.3
24	1.2	1.2
25	1.6	1.4
26	1.6	1.3
27	1.7	1.2
28	1.8	1.2