



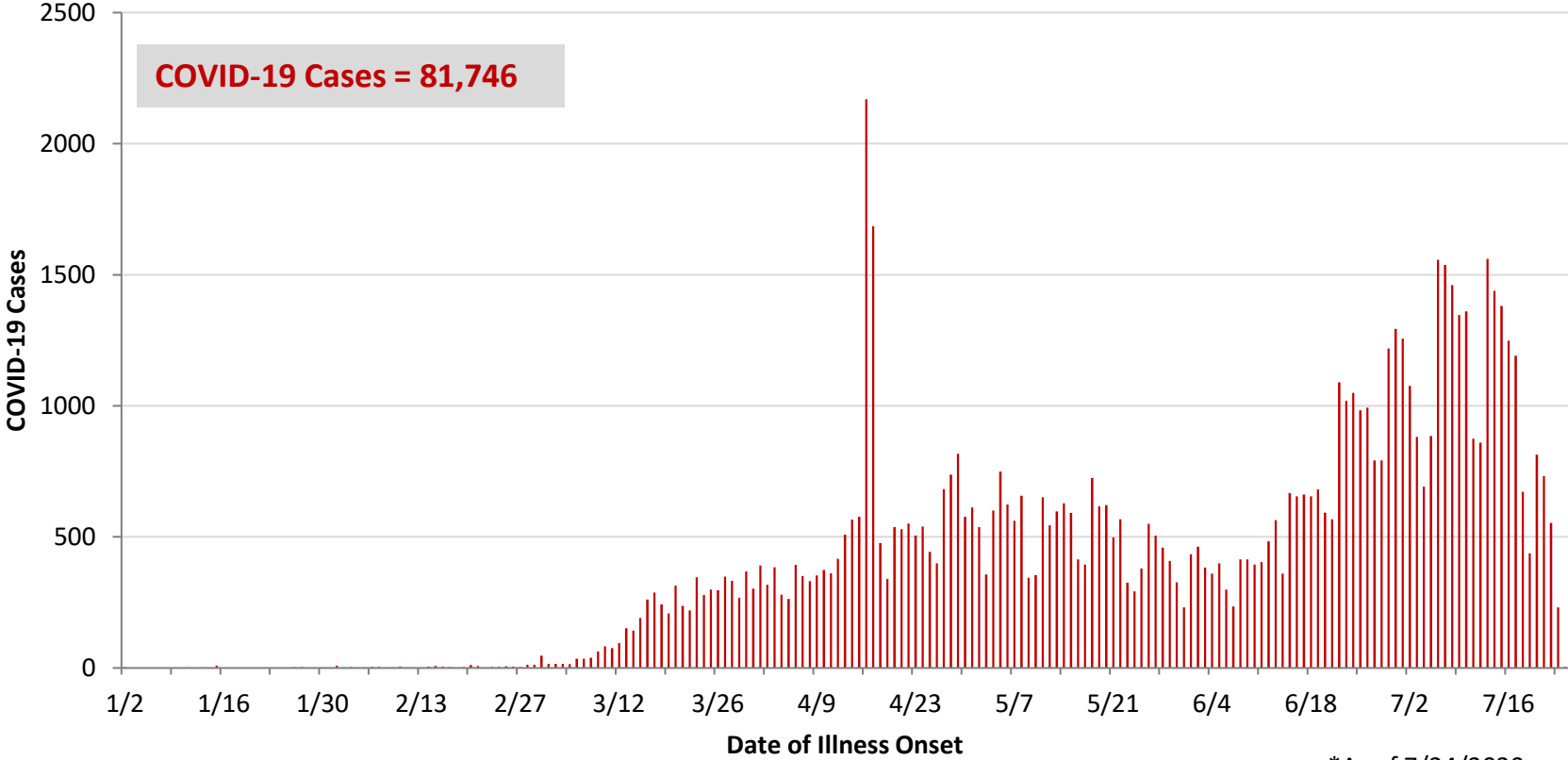
**Ohio, West Central Ohio (WCO), and Montgomery County COVID-19 Cases  
As of 7/24/20**

**Source:** The State of Ohio COVID-19 Dashboard, Ohio Department of Health

**Ohio:**

<b>Preliminary COVID-19 Cases Ohio, As of 7/24/2020</b>		
<b>Sex</b>	<b># Cases</b>	<b>% Cases</b>
Female	41,519	51%
Male	39,468	48%
Unknown	759	1%
<b>Total</b>	<b>81,746</b>	<b>100%</b>
<b>Age Group</b>		
<b>Age Group</b>	<b># Cases</b>	<b>% Cases</b>
0-19	6,914	8%
20-29	16,596	20%
30-39	13,708	17%
40-49	11,849	14%
50-59	12,026	15%
60-69	9,030	11%
70-79	5,716	7%
80+	5,823	7%
Unknown	84	0%
<b>Total</b>	<b>81,746</b>	<b>100%</b>
<b>Hospitalized</b>		
Hospitalized	10,072	12.3%
<b>Deaths</b>		
Deaths	3,297	4.0%
<b>Age Group</b>		
<b>Age Group</b>	<b>Deaths</b>	<b>% of Deaths</b>
0-19	2	0%
20-29	11	0%
30-39	24	1%
40-49	57	2%
50-59	211	6%
60-69	465	14%
70-79	818	25%
80+	1,709	52%
<b>Total</b>	<b>3,297</b>	<b>100%</b>

**PRELIMINARY COVID-19 Cases by Date of Illness Onset  
Ohio, 1/2/20 - 7/24/20\***

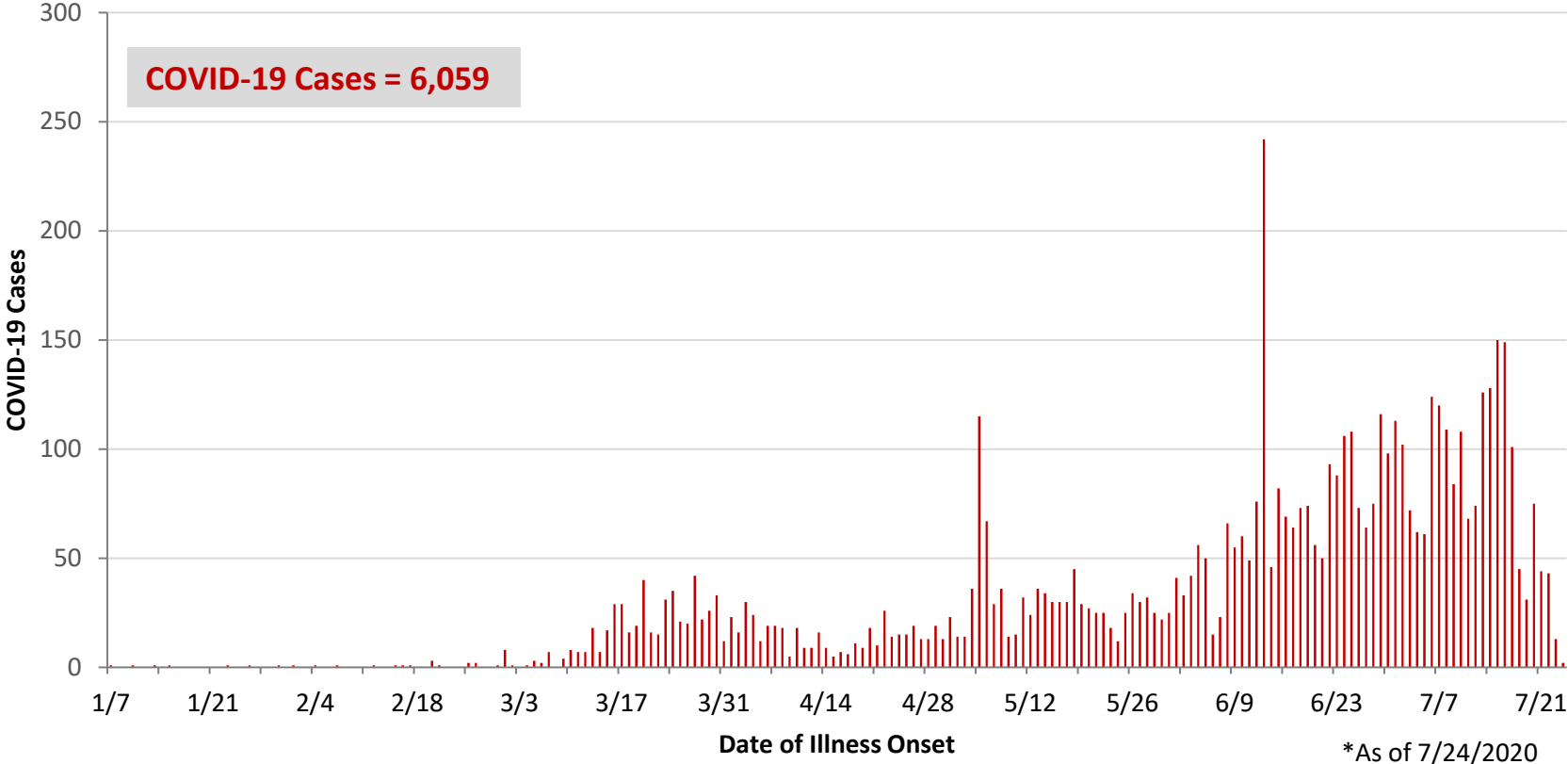


\*As of 7/24/2020

WCO:

Preliminary COVID-19 Cases West Central Ohio, As of 7/24/2020		
County	# Cases	% Cases
Champaign	78	1%
Clark	976	16%
Darke	273	5%
Greene	526	9%
Miami	628	10%
Montgomery	3,353	55%
Preble	115	2%
Shelby	110	2%
<b>Total</b>	<b>6,059</b>	<b>100%</b>
Sex		
Sex	# Cases	% Cases
Female	3,276	54%
Male	2,639	44%
Unknown	144	2%
<b>Total</b>	<b>6,059</b>	<b>100%</b>
Age Group		
Age Group	# Cases	% Cases
0-19	646	11%
20-29	1,209	20%
30-39	1,044	17%
40-49	807	13%
50-59	841	14%
60-69	696	11%
70-79	420	7%
80+	396	7%
<b>Total</b>	<b>6,059</b>	<b>100%</b>
Hospitalized	780	12.9%
Deaths	142	2.3%
Age Group		
Age Group	Deaths	% of Deaths
0-19	0	0%
20-29	2	1%
30-39	3	2%
40-49	2	1%
50-59	10	7%
60-69	22	15%
70-79	24	17%
80+	79	56%
<b>Total</b>	<b>142</b>	<b>100%</b>

**PRELIMINARY COVID-19 Cases by Date of Illness Onset  
West Central Ohio, 1/7/20 - 7/24/20\***



**Montgomery County:**

<b>Preliminary COVID-19 Cases Montgomery County, As of 7/24/2020</b>		
<b>Sex</b>	<b># Cases</b>	<b>% Cases</b>
Female	1,854	55%
Male	1,455	43%
Unknown	44	1%
<b>Total</b>	<b>3,353</b>	<b>100%</b>
<b>Age Group</b>		
<b>Age Group</b>	<b># Cases</b>	<b>% Cases</b>
0-19	401	12%
20-29	647	19%
30-39	596	18%
40-49	467	14%
50-59	467	14%
60-69	374	11%
70-79	226	7%
80+	170	5%
Unknown	5	0%
<b>Total</b>	<b>3,353</b>	<b>100%</b>
Hospitalized	501	14.9%
Deaths	53	1.6%
<b>Age Group</b>	<b>Deaths</b>	<b>% of Deaths</b>
0-19	0	0%
20-29	2	4%
30-39	2	4%
40-49	2	4%
50-59	6	11%
60-69	12	23%
70-79	8	15%
80+	21	40%
<b>Total</b>	<b>53</b>	<b>100%</b>

<b>Age Group</b>	<b>Hospitalizations</b>	<b>% of Age Group Cases</b>
0-19	24	6.0%
20-29	25	3.9%
30-39	44	7.4%
40-49	57	12.2%
50-59	91	19.5%
60-69	111	29.7%
70-79	91	40.3%
80+	58	34.1%
<b>Total</b>	<b>501</b>	<b>14.9%</b>

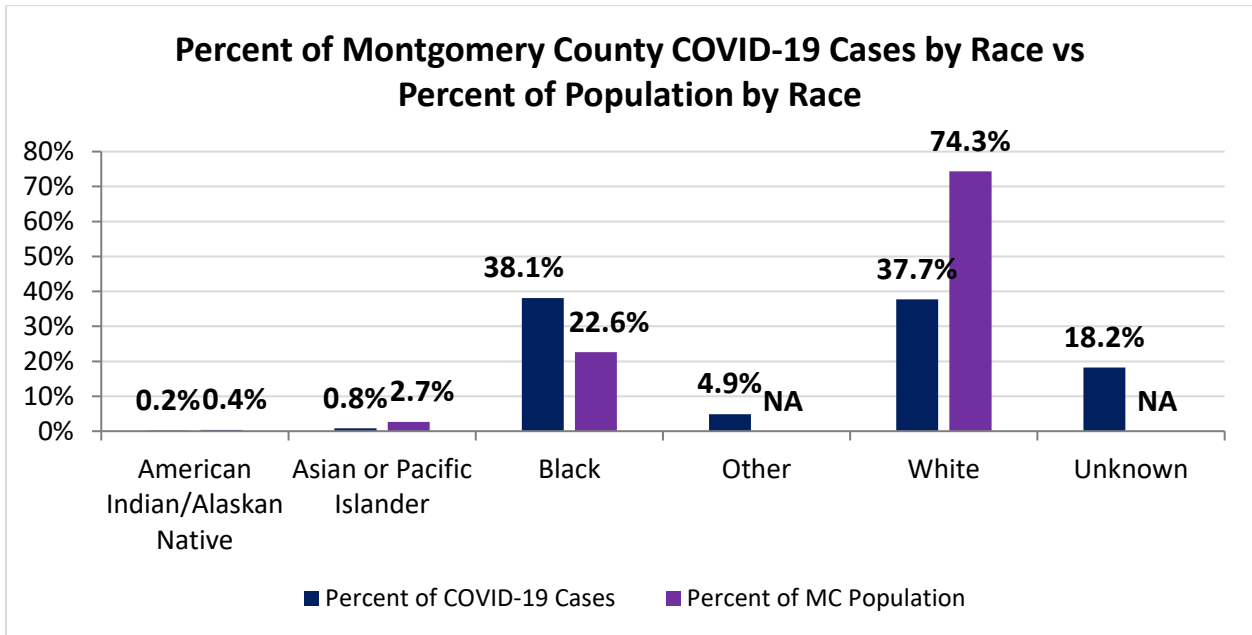
Source: Ohio Disease Reporting System, ODH

Montgomery County COVID-19 Cases by Race As of 7/23/20				
Race	Count	Percent	Rate	Rate Interpretation**
American Indian/Alaskan Native (AI/AN)*	7	0.2%	325.9	1 in 307
Asian	27	0.8%	189.8	1 in 527
Black	1,242	38.1%	1,031.9	1 in 97
Other	159	4.9%	NA	NA
White	1,229	37.7%	310.7	1 in 322
Unknown	594	18.2%	NA	NA
<b>Total</b>	<b>3,258</b>	<b>100%</b>	<b>612.0</b>	<b>1 in 163</b>

\*Note. AI/ANs account for 0.4% of Montgomery County’s population, and therefore, rates for this population will be large and may be misleading.

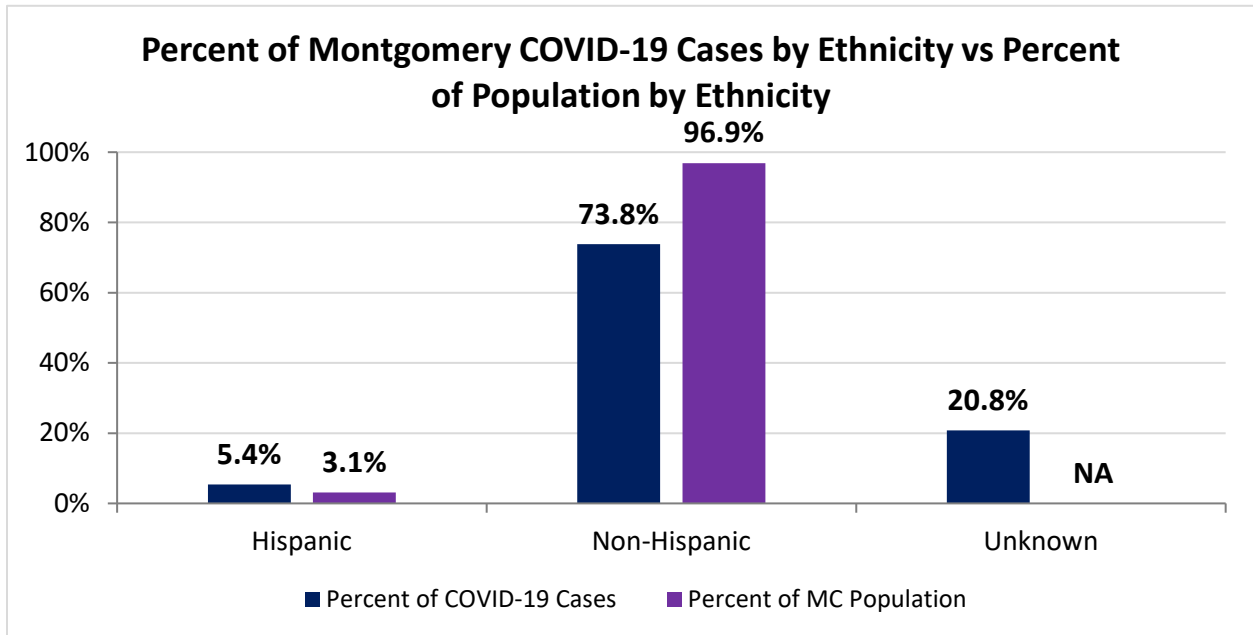
\*\*Rate interpretation represents the number of cases for the given population.

Example - there is a total of 1 case for every 163 Montgomery County residents.



<b>Montgomery County COVID-19 Cases by Ethnicity As of 7/23/20</b>				
<b>Ethnicity</b>	<b>Count</b>	<b>Percent</b>	<b>Rate</b>	<b>Rate Interpretation**</b>
Hispanic	177	5.4%	1,075.3	1 in 93
Non-Hispanic	2,404	73.8%	466.0	1 in 215
Unknown	677	20.8%	NA	NA
<b>Total</b>	<b>3,258</b>	<b>100%</b>	<b>612.0</b>	<b>1 in 163</b>

\*\*Rate interpretation represents the number of cases for the given population.  
 Example - there is a total of 1 case for every 163 Montgomery County residents.



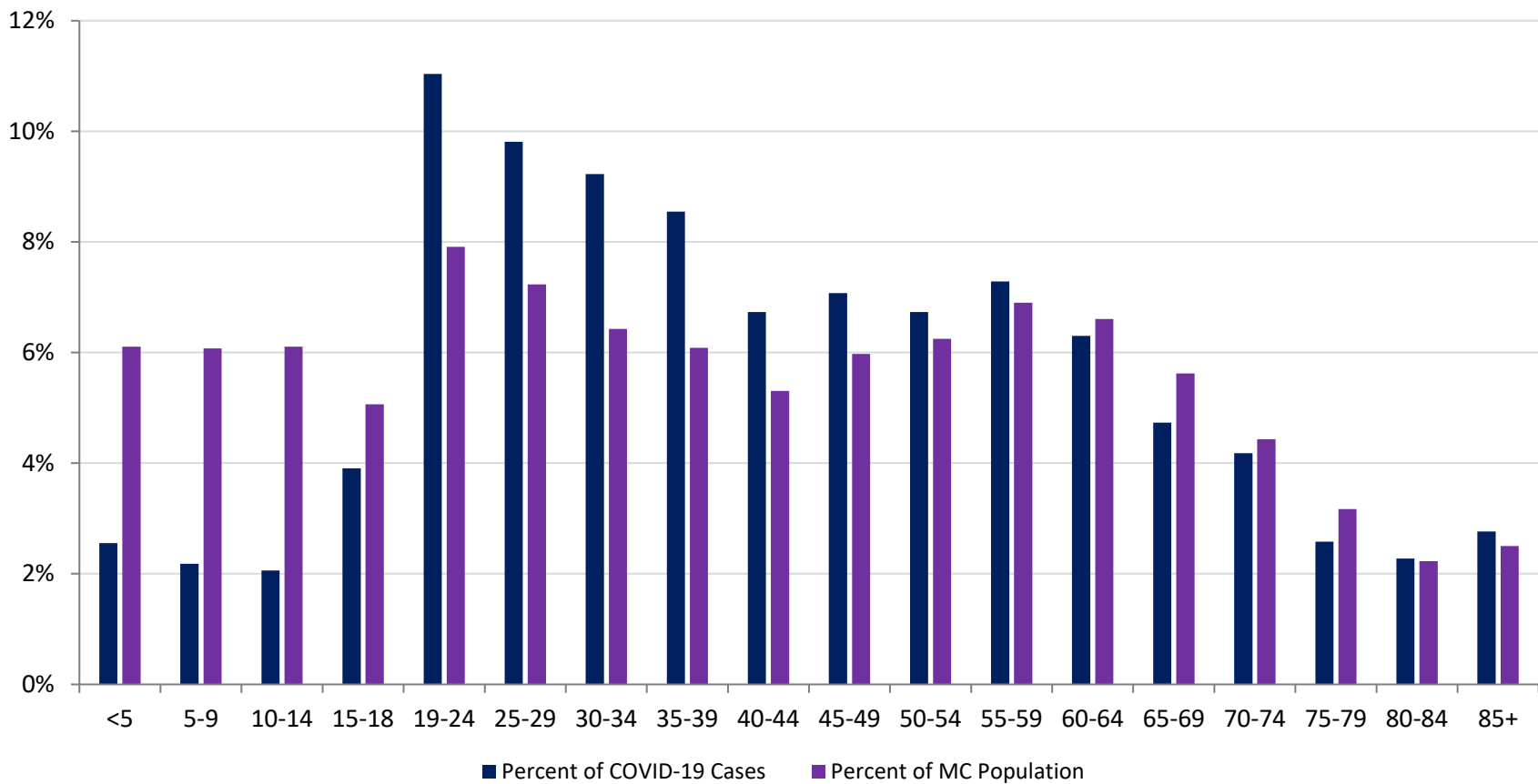
<b>Montgomery County COVID-19 Cases by Health Care Worker Status As of 7/23/20</b>		
<b>Status</b>	<b>#</b>	<b>%</b>
Health Care Worker	358	11.0%
Non-Health Care Worker	1,784	54.8%
Unknown	1,116	34.3%
<b>Total</b>	<b>3,258</b>	<b>100%</b>

<b>Montgomery County COVID-19 Cases Age Range As of 7/23/20</b>	
<b>Stat</b>	<b>Age in Years</b>
Age Range	<1 - 104
Average Age	42.4
Median Age	40.0

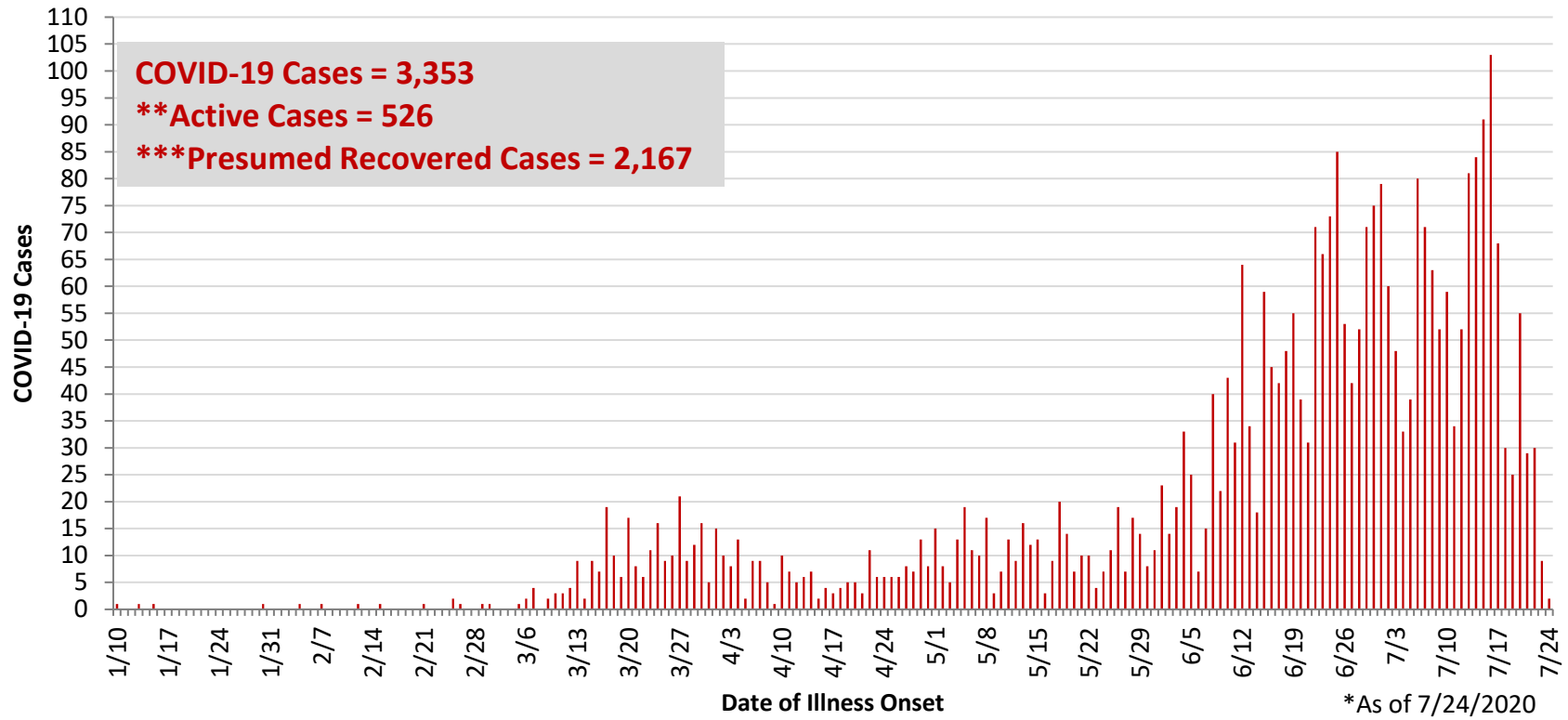
<b>Montgomery County COVID-19 Cases by Age Group As of 7/23/20</b>				
<b>Age Group</b>	<b># Cases</b>	<b>Rate</b>	<b>Percent of COVID-19 Cases</b>	<b>Percent of MC Population</b>
<5	83	255.2	2.6%	6.1%
5-9	71	219.6	2.2%	6.1%
10-14	67	206.1	2.1%	6.1%
15-18	127	471.1	3.9%	5.1%
19-24	359	852.2	11.0%	7.9%
25-29	319	828.7	9.8%	7.2%
30-34	300	877.0	9.2%	6.4%
35-39	278	857.8	8.5%	6.1%
40-44	219	775.1	6.7%	5.3%
45-49	230	723.3	7.1%	6.0%
50-54	219	658.6	6.7%	6.2%
55-59	237	645.3	7.3%	6.9%
60-64	205	583.0	6.3%	6.6%
65-69	154	514.6	4.7%	5.6%
70-74	136	576.0	4.2%	4.4%
75-79	84	497.8	2.6%	3.2%
80-84	74	624.1	2.3%	2.2%
85+	90	675.9	2.8%	2.5%
<b>Total</b>	<b>3,252</b>	<b>610.9</b>	<b>100%</b>	<b>100%</b>



**Percent of Montgomery County COVID-19 Cases by Age Group vs Percent of Population by Age Group**



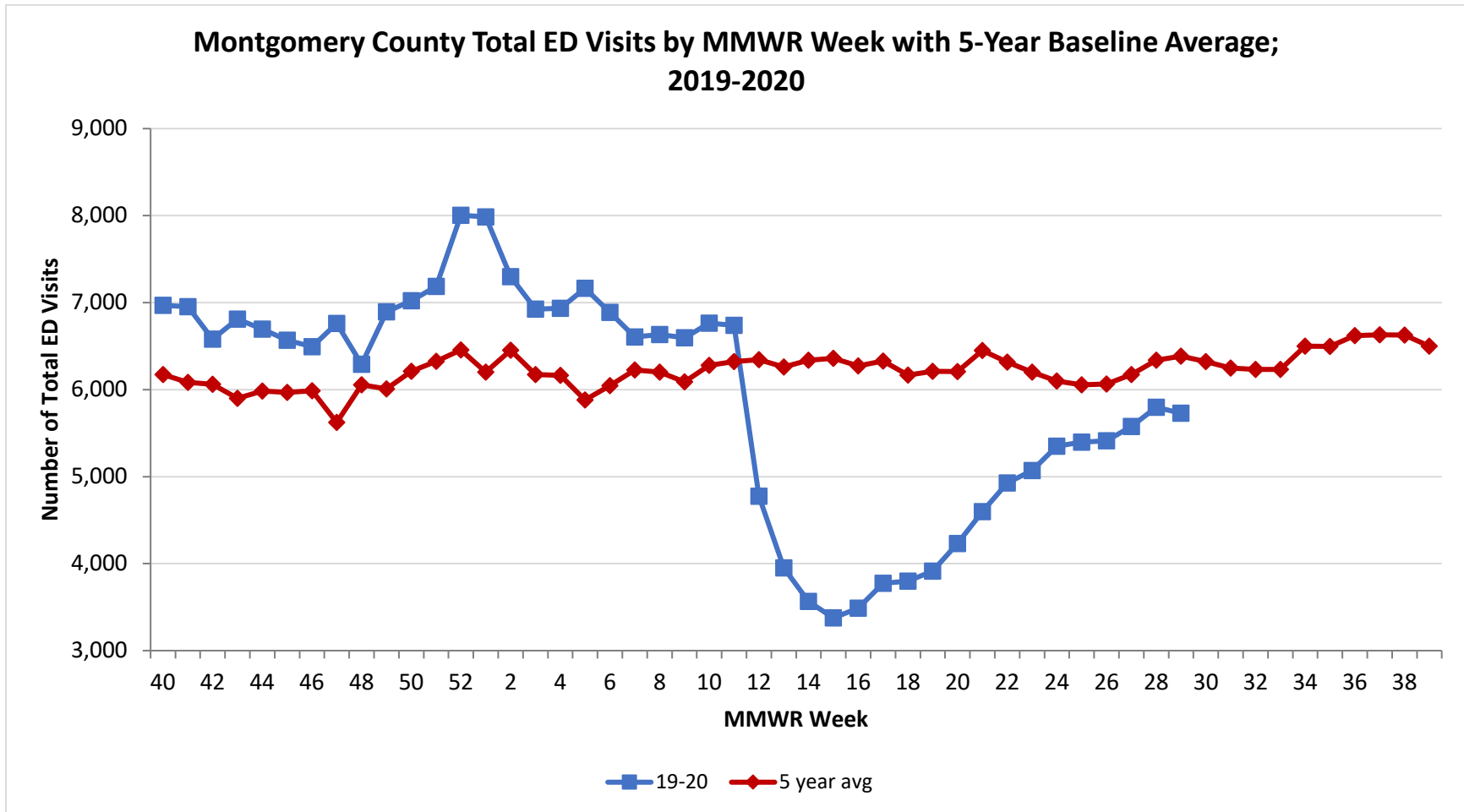
**PRELIMINARY COVID-19 Cases by Date of Illness Onset  
Montgomery County, 1/10/20 - 7/24/20\***



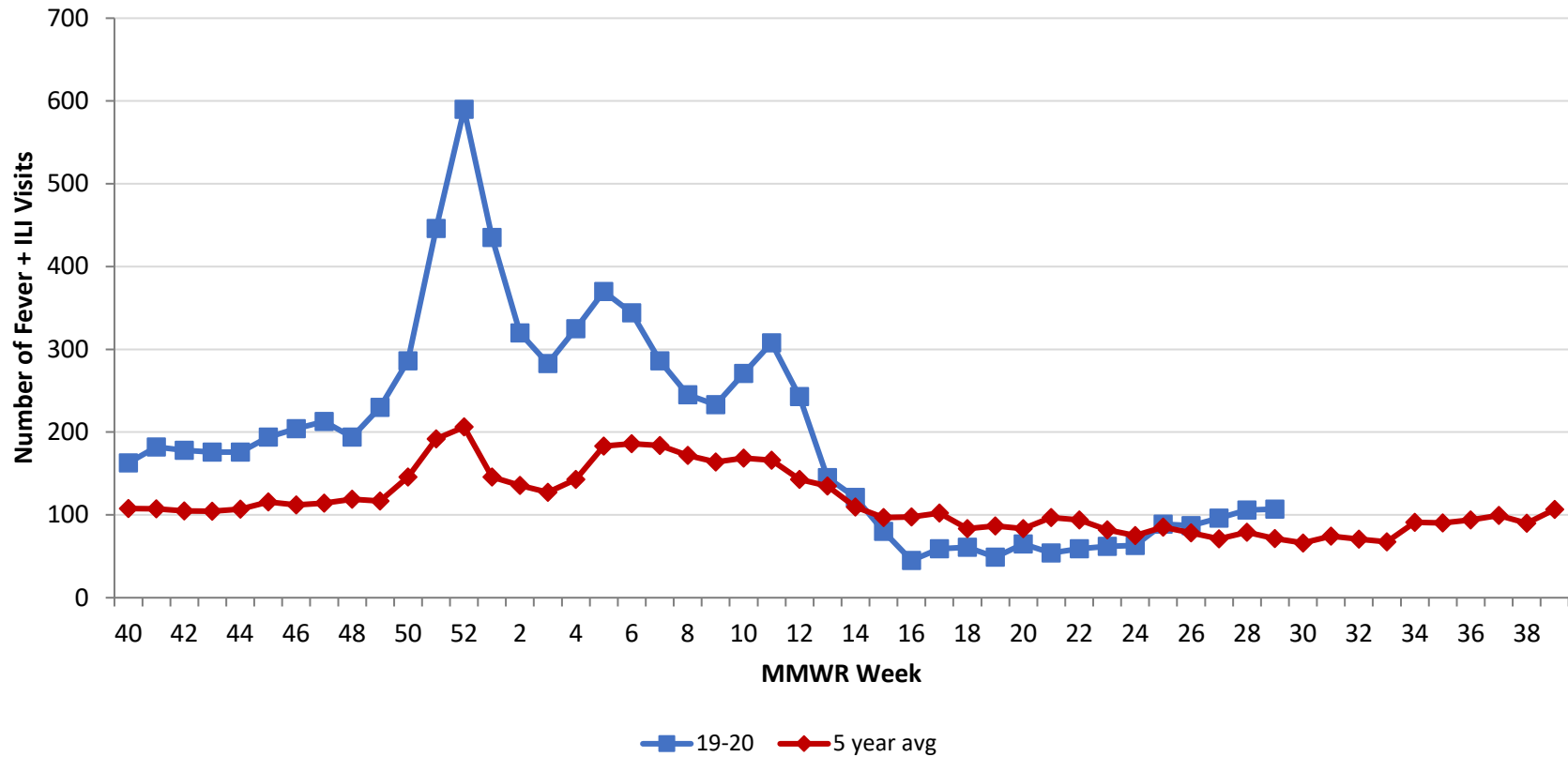
\*\*Active cases are based on the reported illness onset date (using a 10-day window) of reported cases.

\*\*\*Presumed recovered is defined as cases with a symptom onset date >21 days prior who are not deceased.

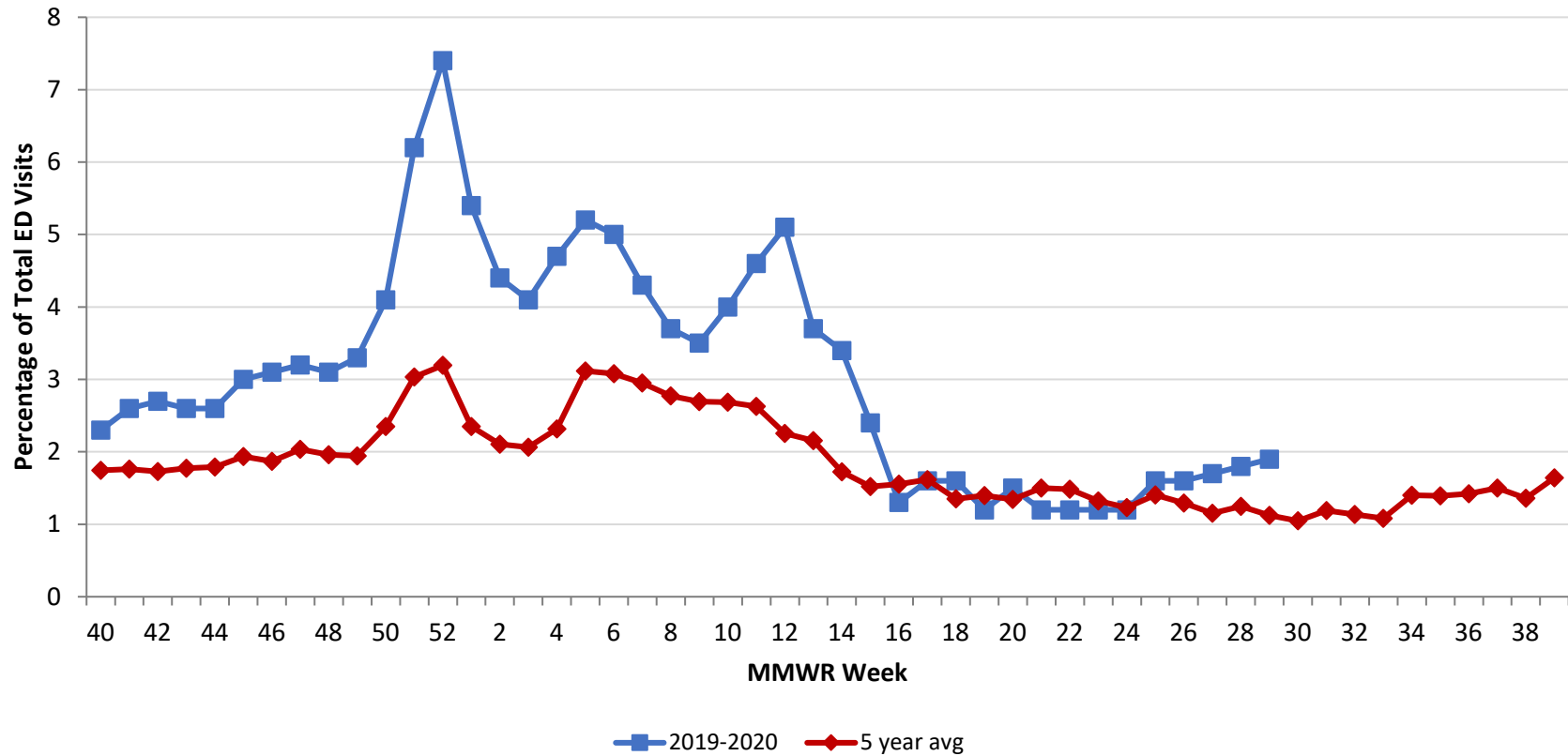
Source: EpiCenter Syndromic Surveillance, Health Monitoring Systems



Montgomery County Fever + ILI Specified ED Visits by MMWR Week with 5-Year Baseline Average; 2019-2020



**Montgomery County Fever + ILI Specified ED Visits (% of Total Visits) by MMWR Week  
with 5-Year Baseline Average; 2019-2020**



# Total Visits		
MMWR Week	19-20	5-Year Average
46	6,494	5987.6
47	6,760	5622.8
48	6,292	6056.8
49	6,895	6008.0
50	7,022	6209.8
51	7,185	6324.4
52	8,005	6456.0
1	7,986	6200.8
2	7,297	6452.4
3	6,924	6172.9
4	6,935	6164.0
5	7,164	5881.8
6	6,888	6045.0
7	6,605	6226.8
8	6,633	6200.6
9	6,597	6088.2
10	6,763	6279.6
11	6,738	6321.6
12	4,775	6345.0
13	3,952	6259.8
14	3,565	6337.4
15	3,376	6360.6
16	3,489	6273.4
17	3,774	6327.8
18	3,798	6165.8
19	3,915	6209.8
20	4,231	6208.4
21	4,598	6,449.6
22	4,928	6,315.4
23	5,070	6,201.0
24	5,350	6,098.4
25	5,398	6,055.8
26	5,412	6,063.2
27	5,577	6,173.0
28	5,797	6,339.0
29	5,728	6384.6

# Fever + ILI Visits		
MMWR Week	19-20	5-Year Average
46	204	112.0
47	213	114.4
48	194	118.8
49	230	116.8
50	286	145.8
51	446	191.8
52	590	206.2
1	435	145.8
2	320	135.8
3	283	127.4
4	325	142.8
5	370	183.2
6	344	186.2
7	286	183.8
8	245	171.8
9	233	164.0
10	271	168.6
11	308	166.2
12	243	143.0
13	145	134.8
14	121	109.4
15	80	96.8
16	45	97.6
17	59	102.4
18	61	83.4
19	49	86.8
20	65	83.4
21	54	96.8
22	59	93.8
23	62	82.0
24	63	75.0
25	89	85.2
26	87	78.4
27	96	71.2
28	106	79.2
29	107	71.6

% Fever + ILI Visits		
MMWR Week	19-20	5-Year Average
46	3.1	1.9
47	3.2	2.0
48	3.1	2.0
49	3.3	1.9
50	4.1	2.3
51	6.2	3.0
52	7.4	3.2
1	5.4	2.4
2	4.4	2.1
3	4.1	2.1
4	4.7	2.3
5	5.2	3.1
6	5	3.1
7	4.3	3.0
8	3.7	2.8
9	3.5	2.7
10	4	2.7
11	4.6	2.6
12	5.1	2.3
13	3.7	2.2
14	3.4	1.7
15	2.4	1.5
16	1.3	1.6
17	1.6	1.6
18	1.6	1.4
19	1.2	1.4
20	1.5	1.3
21	1.2	1.5
22	1.2	1.5
23	1.2	1.3
24	1.2	1.2
25	1.6	1.4
26	1.6	1.3
27	1.7	1.2
28	1.8	1.2
29	1.9	1.1