



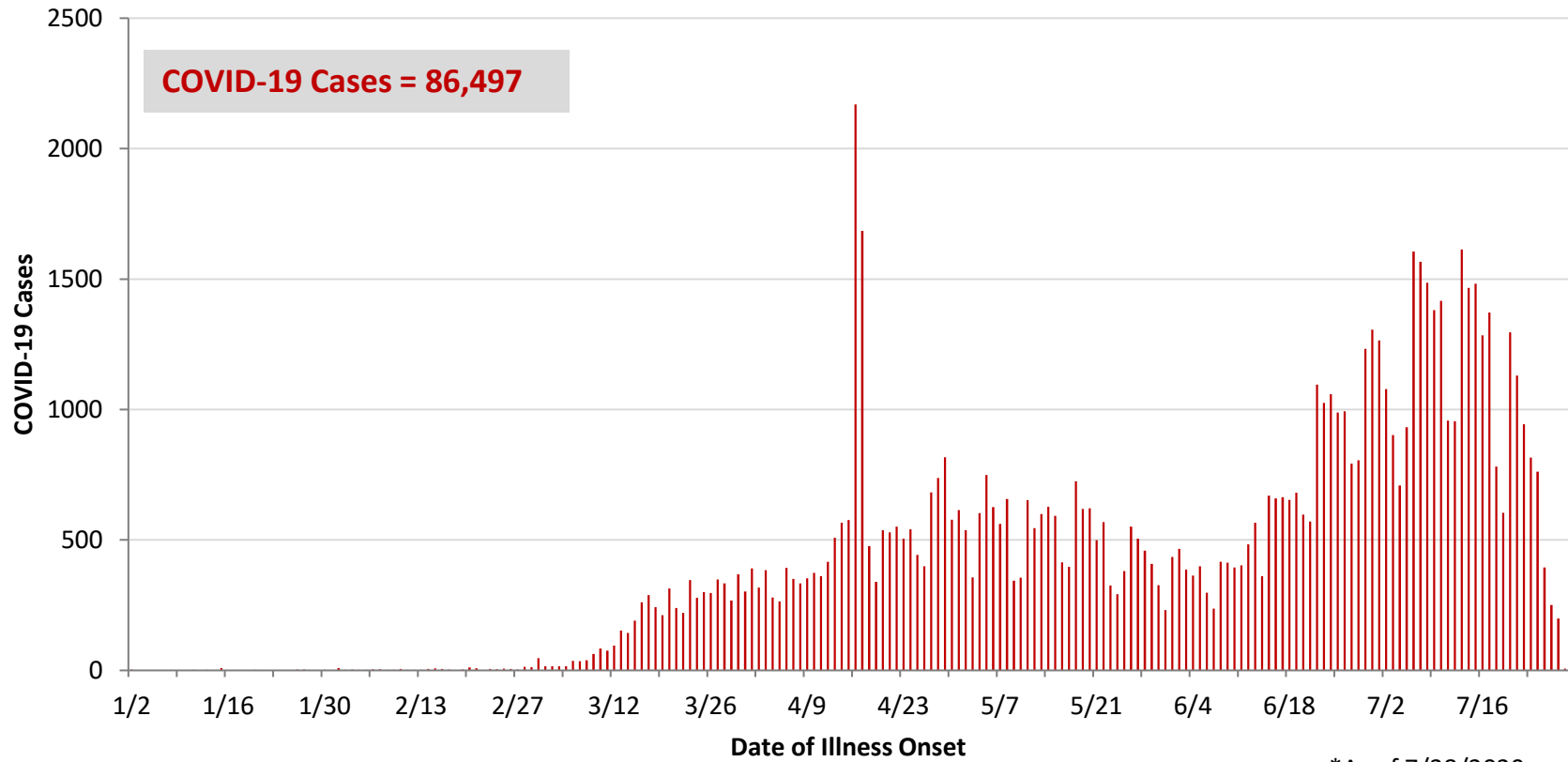
**Ohio, West Central Ohio (WCO), and Montgomery County COVID-19 Cases
As of 7/28/20**

Source: The State of Ohio COVID-19 Dashboard, Ohio Department of Health

Ohio:

Preliminary COVID-19 Cases Ohio, As of 7/28/2020		
Sex	# Cases	% Cases
Female	44,137	51%
Male	41,581	48%
Unknown	779	1%
Total	86,497	100%
Age Group		
Age Group	# Cases	% Cases
0-19	7,431	9%
20-29	17,607	20%
30-39	14,439	17%
40-49	12,540	14%
50-59	12,773	15%
60-69	9,545	11%
70-79	6,014	7%
80+	6,048	7%
Unknown	100	0%
Total	86,497	100%
Hospitalized	10,425	12.1%
Deaths	3,382	3.9%
Age Group		
Age Group	Deaths	% of Deaths
0-19	2	0%
20-29	10	0%
30-39	24	1%
40-49	58	2%
50-59	220	7%
60-69	481	14%
70-79	832	25%
80+	1,755	52%
Total	3,382	100%

**PRELIMINARY COVID-19 Cases by Date of Illness Onset
Ohio, 1/2/20 - 7/28/20***

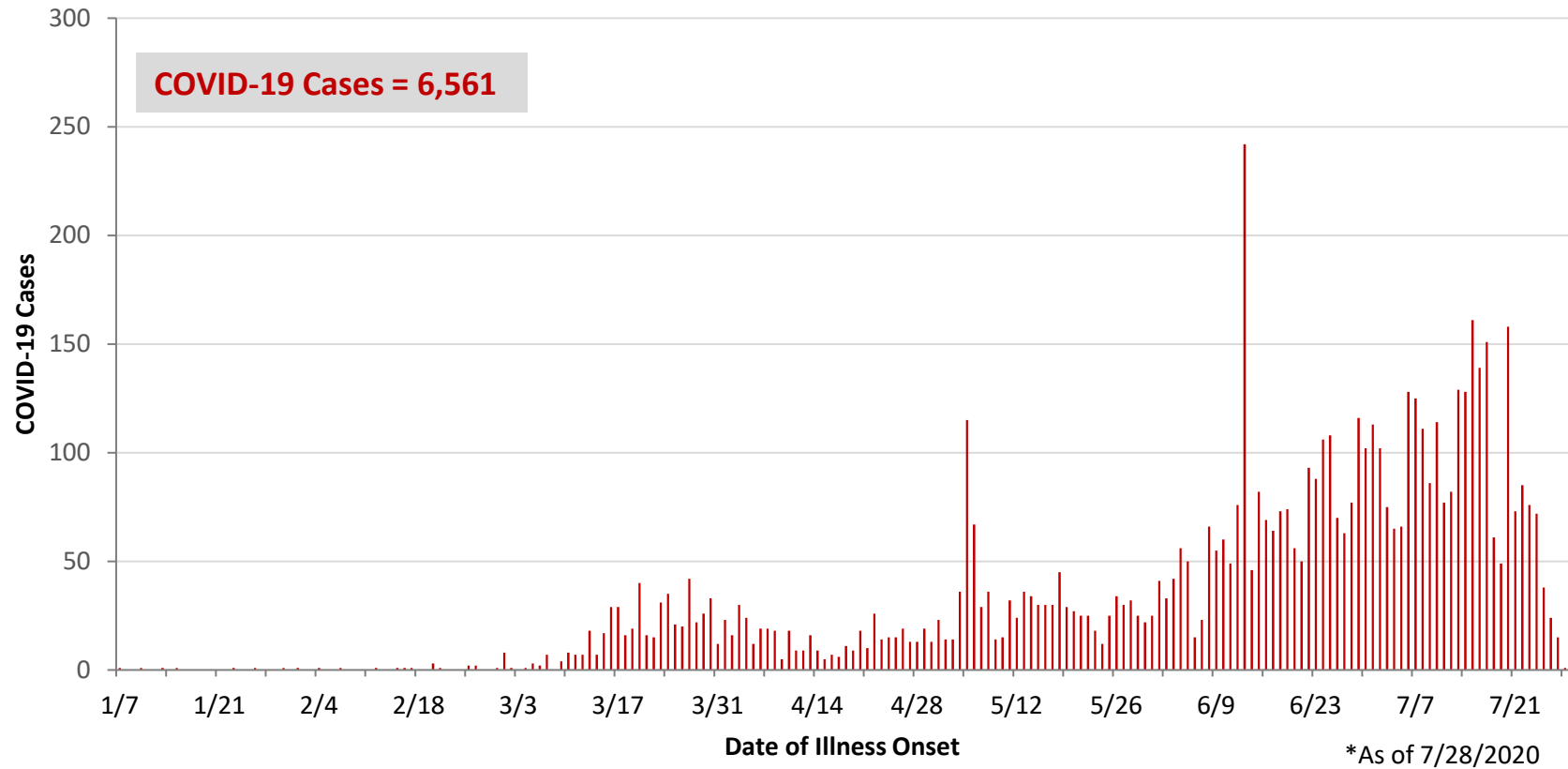


*As of 7/28/2020

WCO:

Preliminary COVID-19 Cases West Central Ohio, As of 7/28/2020		
County	# Cases	% Cases
Champaign	86	1%
Clark	1,023	16%
Darke	281	4%
Greene	568	9%
Miami	698	11%
Montgomery	3,653	56%
Preble	126	2%
Shelby	126	2%
Total	6,561	100%
Sex		
Sex	# Cases	% Cases
Female	3,560	54%
Male	2,853	43%
Unknown	148	2%
Total	6,561	100%
Age Group		
Age Group	# Cases	% Cases
0-19	705	11%
20-29	1,280	20%
30-39	1,117	17%
40-49	893	14%
50-59	933	14%
60-69	748	11%
70-79	461	7%
80+	424	6%
Total	6,561	100%
Hospitalized	828	12.6%
Deaths	149	2.3%
Age Group		
Age Group	Deaths	% of Deaths
0-19	0	0%
20-29	1	1%
30-39	3	2%
40-49	2	1%
50-59	13	9%
60-69	23	15%
70-79	24	16%
80+	83	56%
Total	149	100%

**PRELIMINARY COVID-19 Cases by Date of Illness Onset
West Central Ohio, 1/7/20 - 7/28/20***



Montgomery County:

Preliminary COVID-19 Cases Montgomery County, As of 7/28/2020		
Sex	# Cases	% Cases
Female	2,024	55%
Male	1,581	43%
Unknown	48	1%
Total	3,653	100%
Age Group		
Age Group	# Cases	% Cases
0-19	437	12%
20-29	697	19%
30-39	638	17%
40-49	519	14%
50-59	517	14%
60-69	406	11%
70-79	249	7%
80+	182	5%
Unknown	8	0%
Total	3,653	100%
Hospitalized	532	14.6%
Deaths	58	1.6%
Age Group	Deaths	% of Deaths
0-19	0	0%
20-29	1	2%
30-39	2	3%
40-49	2	3%
50-59	8	14%
60-69	12	21%
70-79	8	14%
80+	25	43%
Total	58	100%

Age Group	Hospitalizations	% of Age Group Cases
0-19	24	5.5%
20-29	27	3.9%
30-39	46	7.2%
40-49	60	11.6%
50-59	101	19.5%
60-69	118	29.1%
70-79	95	38.2%
80+	61	33.5%
Total	532	14.6%

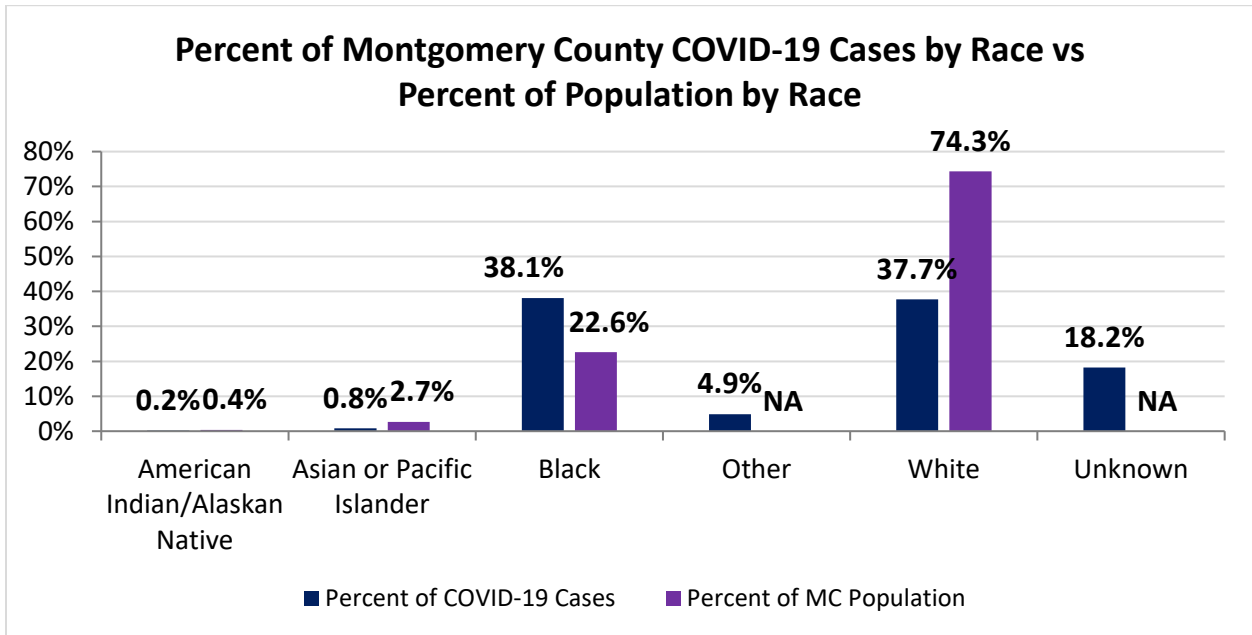
Source: Ohio Disease Reporting System, ODH

Montgomery County COVID-19 Cases by Race As of 7/23/20				
Race	Count	Percent	Rate	Rate Interpretation**
American Indian/Alaskan Native (AI/AN)*	7	0.2%	325.9	1 in 307
Asian	27	0.8%	189.8	1 in 527
Black	1,242	38.1%	1,031.9	1 in 97
Other	159	4.9%	NA	NA
White	1,229	37.7%	310.7	1 in 322
Unknown	594	18.2%	NA	NA
Total	3,258	100%	612.0	1 in 163

*Note. AI/ANs account for 0.4% of Montgomery County’s population, and therefore, rates for this population will be large and may be misleading.

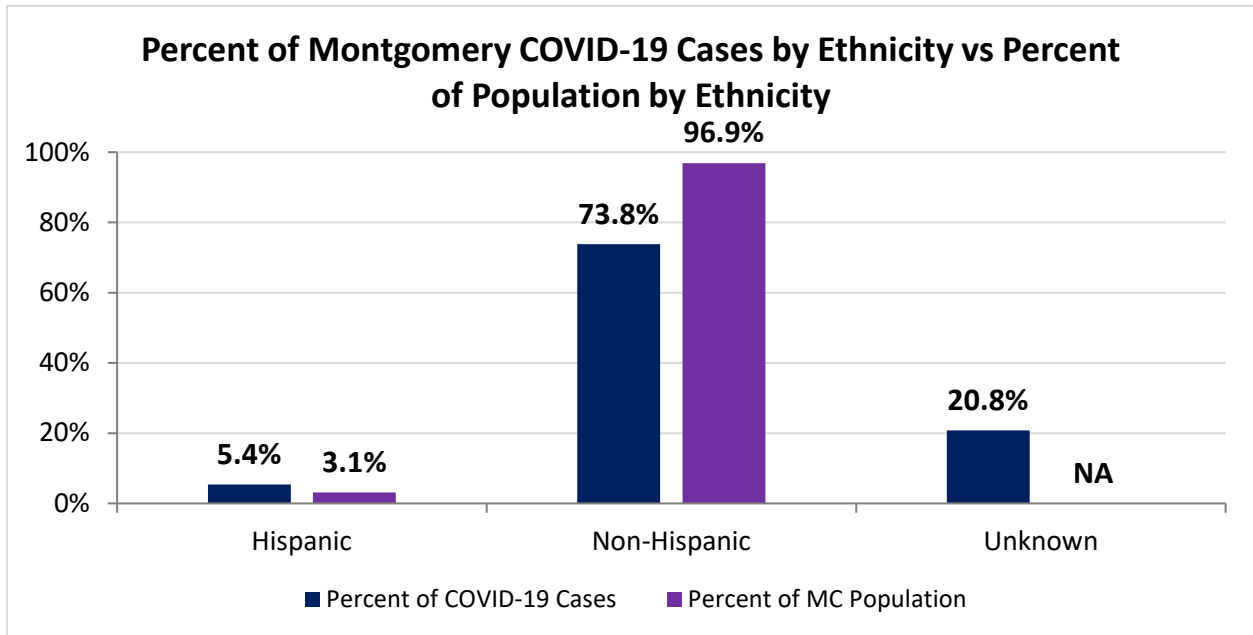
**Rate interpretation represents the number of cases for the given population.

Example - there is a total of 1 case for every 163 Montgomery County residents.



Montgomery County COVID-19 Cases by Ethnicity As of 7/23/20				
Ethnicity	Count	Percent	Rate	Rate Interpretation**
Hispanic	177	5.4%	1,075.3	1 in 93
Non-Hispanic	2,404	73.8%	466.0	1 in 215
Unknown	677	20.8%	NA	NA
Total	3,258	100%	612.0	1 in 163

**Rate interpretation represents the number of cases for the given population.
 Example - there is a total of 1 case for every 163 Montgomery County residents.

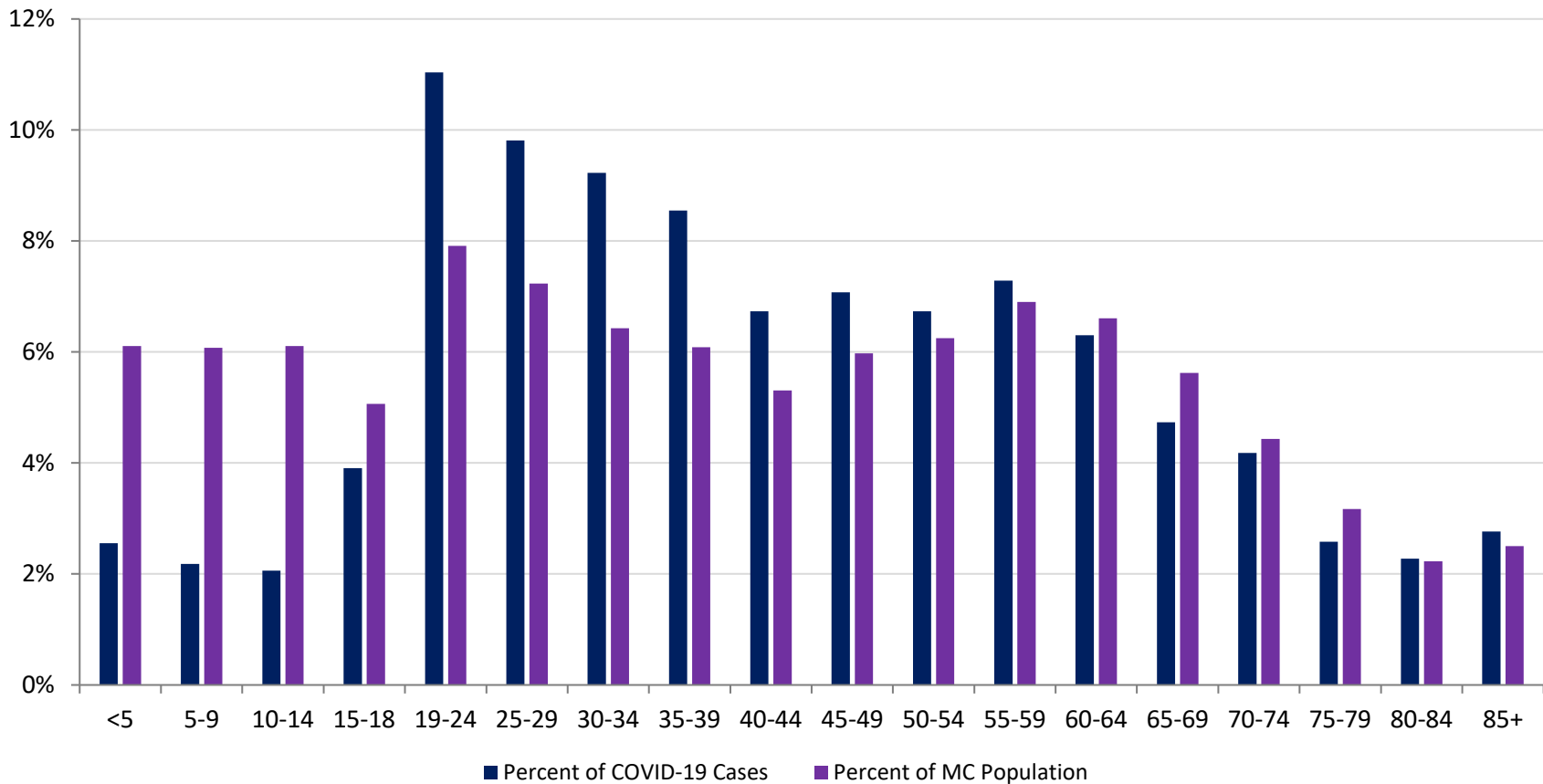


Montgomery County COVID-19 Cases by Health Care Worker Status As of 7/23/20		
Status	#	%
Health Care Worker	358	11.0%
Non-Health Care Worker	1,784	54.8%
Unknown	1,116	34.3%
Total	3,258	100%

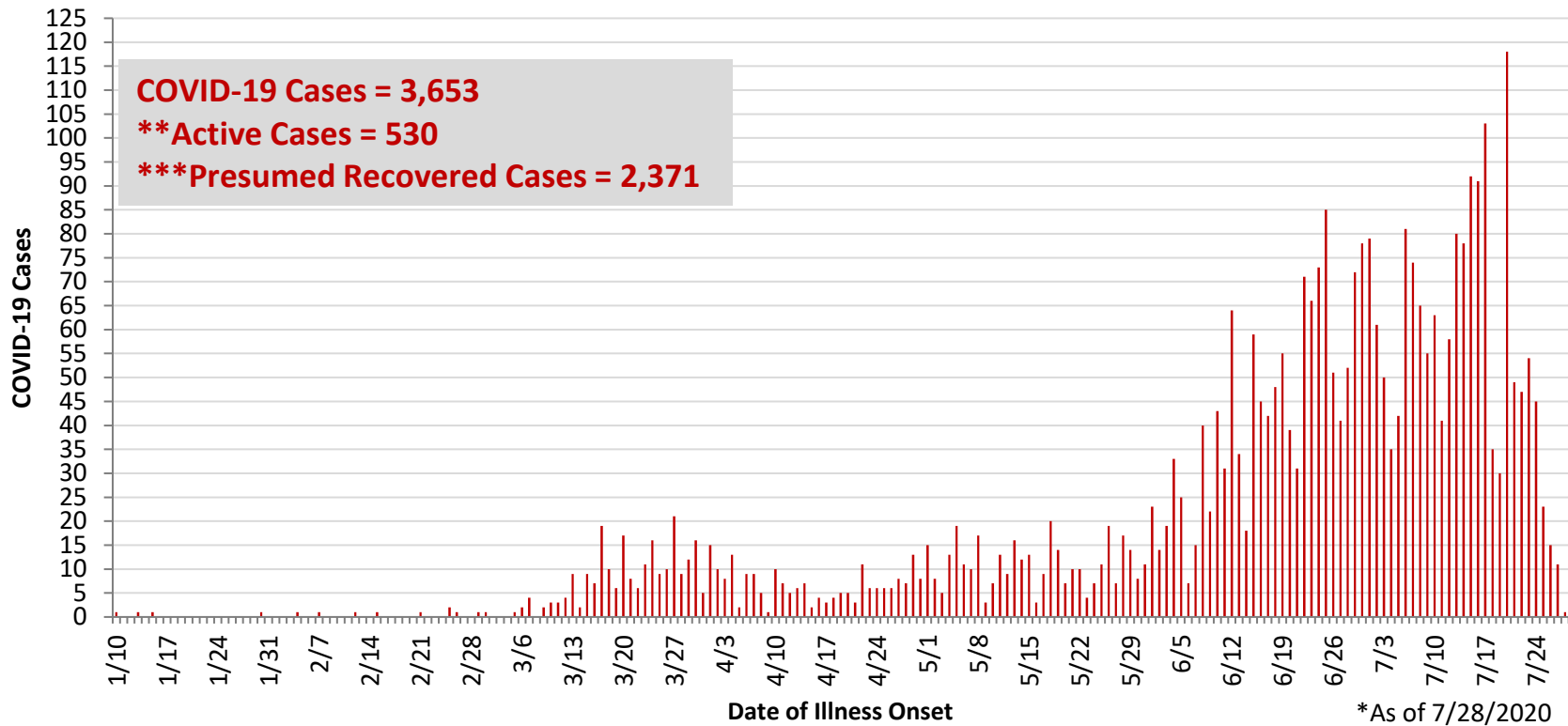
Montgomery County COVID-19 Cases Age Range As of 7/23/20	
Stat	Age in Years
Age Range	<1 - 104
Average Age	42.4
Median Age	40.0

Montgomery County COVID-19 Cases by Age Group As of 7/23/20				
Age Group	# Cases	Rate	Percent of COVID-19 Cases	Percent of MC Population
<5	83	255.2	2.6%	6.1%
5-9	71	219.6	2.2%	6.1%
10-14	67	206.1	2.1%	6.1%
15-18	127	471.1	3.9%	5.1%
19-24	359	852.2	11.0%	7.9%
25-29	319	828.7	9.8%	7.2%
30-34	300	877.0	9.2%	6.4%
35-39	278	857.8	8.5%	6.1%
40-44	219	775.1	6.7%	5.3%
45-49	230	723.3	7.1%	6.0%
50-54	219	658.6	6.7%	6.2%
55-59	237	645.3	7.3%	6.9%
60-64	205	583.0	6.3%	6.6%
65-69	154	514.6	4.7%	5.6%
70-74	136	576.0	4.2%	4.4%
75-79	84	497.8	2.6%	3.2%
80-84	74	624.1	2.3%	2.2%
85+	90	675.9	2.8%	2.5%
Total	3,252	610.9	100%	100%

Percent of Montgomery County COVID-19 Cases by Age Group vs Percent of Population by Age Group



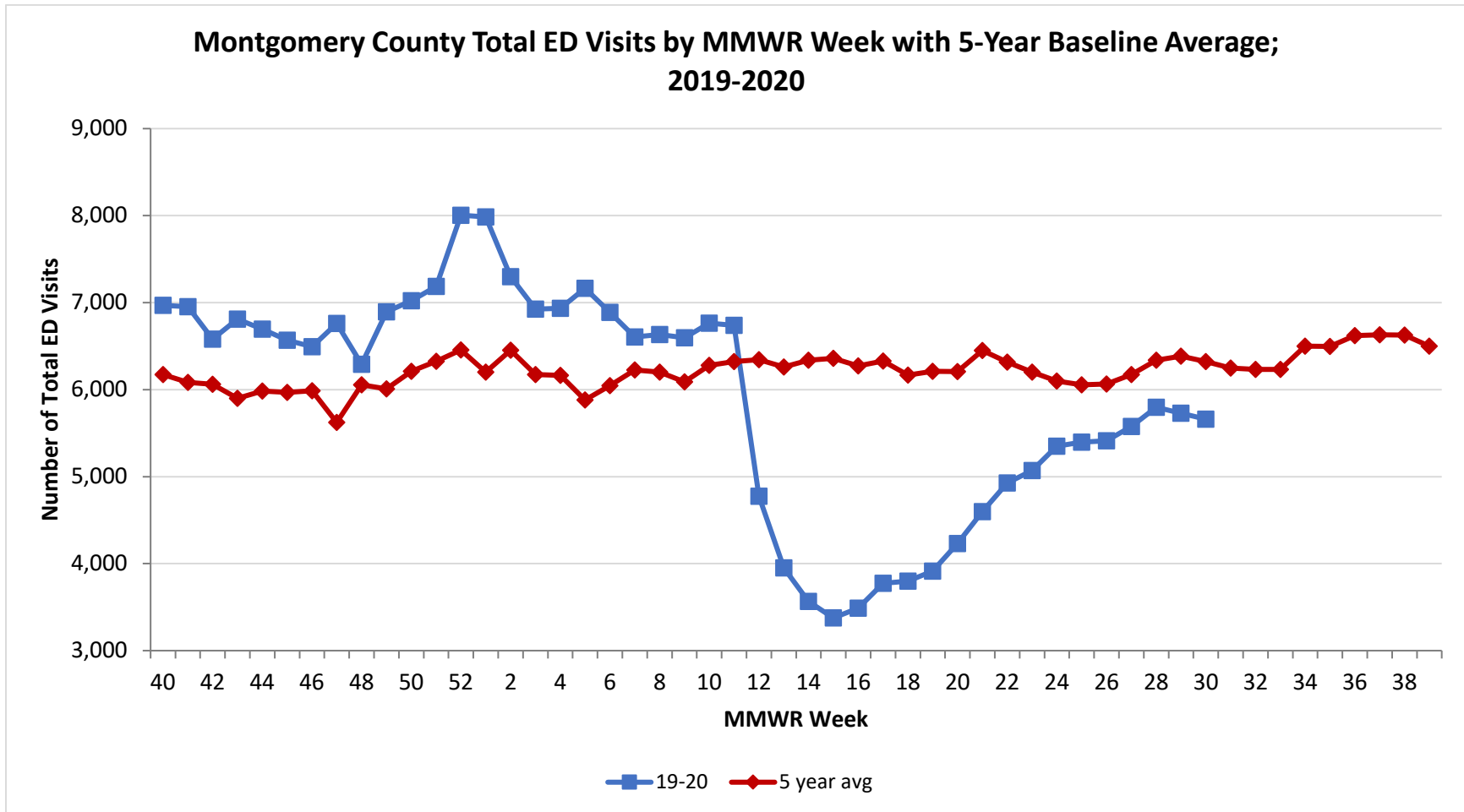
**PRELIMINARY COVID-19 Cases by Date of Illness Onset
Montgomery County, 1/10/20 - 7/28/20***



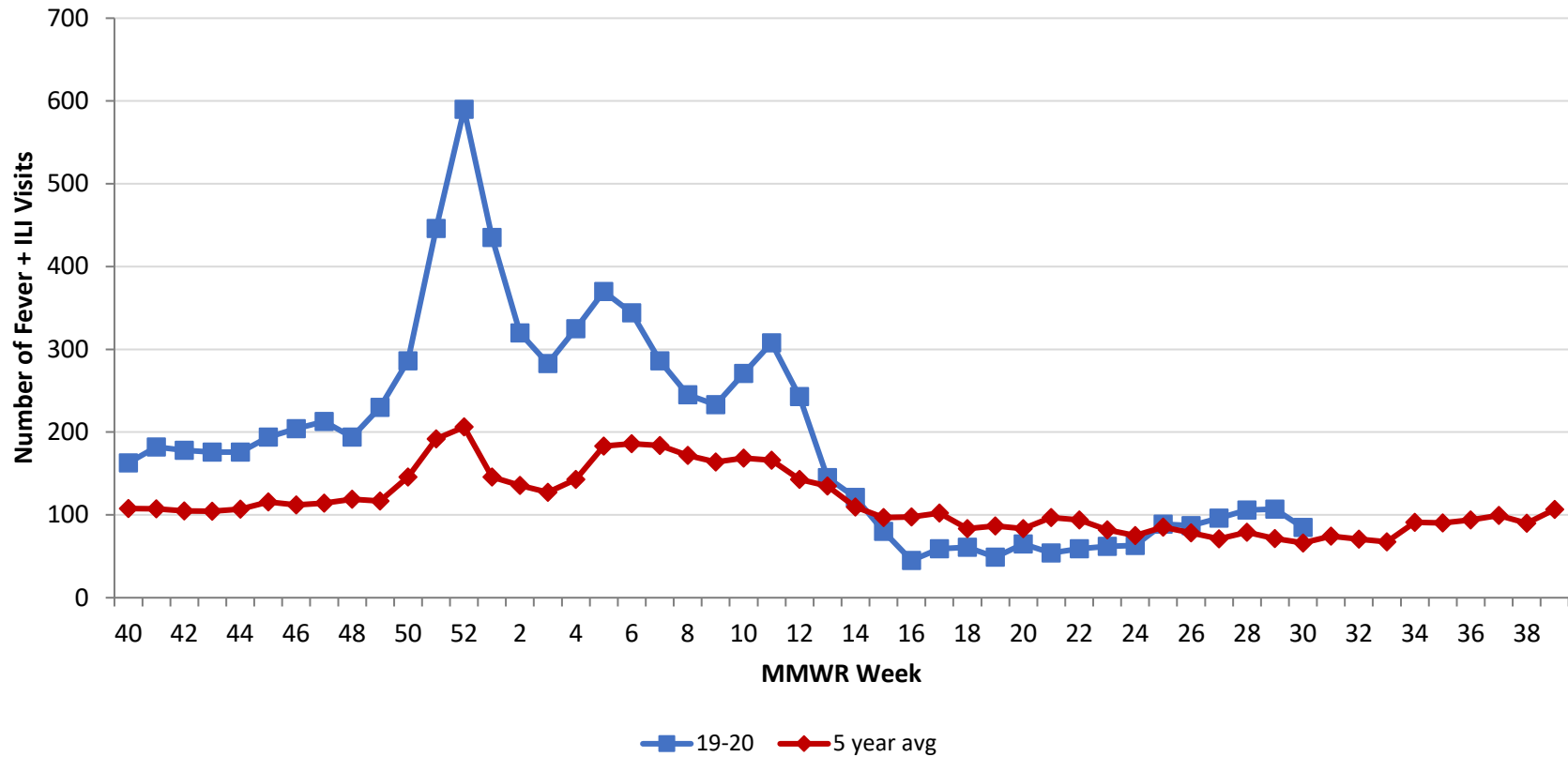
**Active cases are based on the reported illness onset date (using a 10-day window) of reported cases.

***Presumed recovered is defined as cases with a symptom onset date >21 days prior who are not deceased.

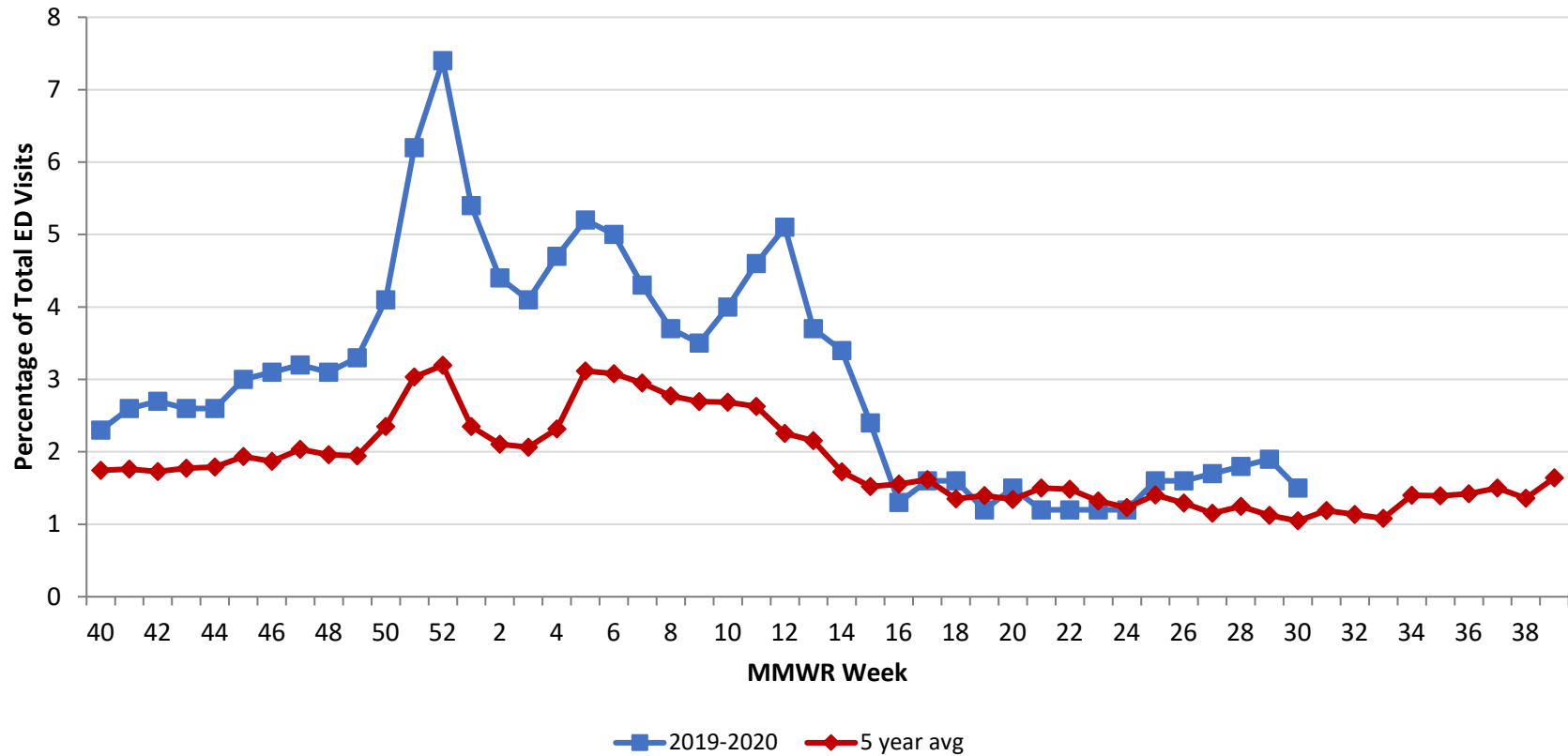
Source: EpiCenter Syndromic Surveillance, Health Monitoring Systems



Montgomery County Fever + ILI Specified ED Visits by MMWR Week with 5-Year Baseline Average; 2019-2020



Montgomery County Fever + ILI Specified ED Visits (% of Total Visits) by MMWR Week with 5-Year Baseline Average; 2019-2020



# Total Visits		
MMWR Week	19-20	5-Year Average
47	6,760	5622.8
48	6,292	6056.8
49	6,895	6008.0
50	7,022	6209.8
51	7,185	6324.4
52	8,005	6456.0
1	7,986	6200.8
2	7,297	6452.4
3	6,924	6172.9
4	6,935	6164.0
5	7,164	5881.8
6	6,888	6045.0
7	6,605	6226.8
8	6,633	6200.6
9	6,597	6088.2
10	6,763	6279.6
11	6,738	6321.6
12	4,775	6345.0
13	3,952	6259.8
14	3,565	6337.4
15	3,376	6360.6
16	3,489	6273.4
17	3,774	6327.8
18	3,798	6165.8
19	3,915	6209.8
20	4,231	6208.4
21	4,598	6,449.6
22	4,928	6,315.4
23	5,070	6,201.0
24	5,350	6,098.4
25	5,398	6,055.8
26	5,412	6,063.2
27	5,577	6,173.0
28	5,797	6,339.0
29	5,728	6384.6
30	5,661	6,322.0

# Fever + ILI Visits		
MMWR Week	19-20	5-Year Average
47	213	114.4
48	194	118.8
49	230	116.8
50	286	145.8
51	446	191.8
52	590	206.2
1	435	145.8
2	320	135.8
3	283	127.4
4	325	142.8
5	370	183.2
6	344	186.2
7	286	183.8
8	245	171.8
9	233	164.0
10	271	168.6
11	308	166.2
12	243	143.0
13	145	134.8
14	121	109.4
15	80	96.8
16	45	97.6
17	59	102.4
18	61	83.4
19	49	86.8
20	65	83.4
21	54	96.8
22	59	93.8
23	62	82.0
24	63	75.0
25	89	85.2
26	87	78.4
27	96	71.2
28	106	79.2
29	107	71.6
30	85	66.2

% Fever + ILI Visits		
MMWR Week	19-20	5-Year Average
47	3.2	2.0
48	3.1	2.0
49	3.3	1.9
50	4.1	2.3
51	6.2	3.0
52	7.4	3.2
1	5.4	2.4
2	4.4	2.1
3	4.1	2.1
4	4.7	2.3
5	5.2	3.1
6	5	3.1
7	4.3	3.0
8	3.7	2.8
9	3.5	2.7
10	4	2.7
11	4.6	2.6
12	5.1	2.3
13	3.7	2.2
14	3.4	1.7
15	2.4	1.5
16	1.3	1.6
17	1.6	1.6
18	1.6	1.4
19	1.2	1.4
20	1.5	1.3
21	1.2	1.5
22	1.2	1.5
23	1.2	1.3
24	1.2	1.2
25	1.6	1.4
26	1.6	1.3
27	1.7	1.2
28	1.8	1.2
29	1.9	1.1
30	1.5	1.0