



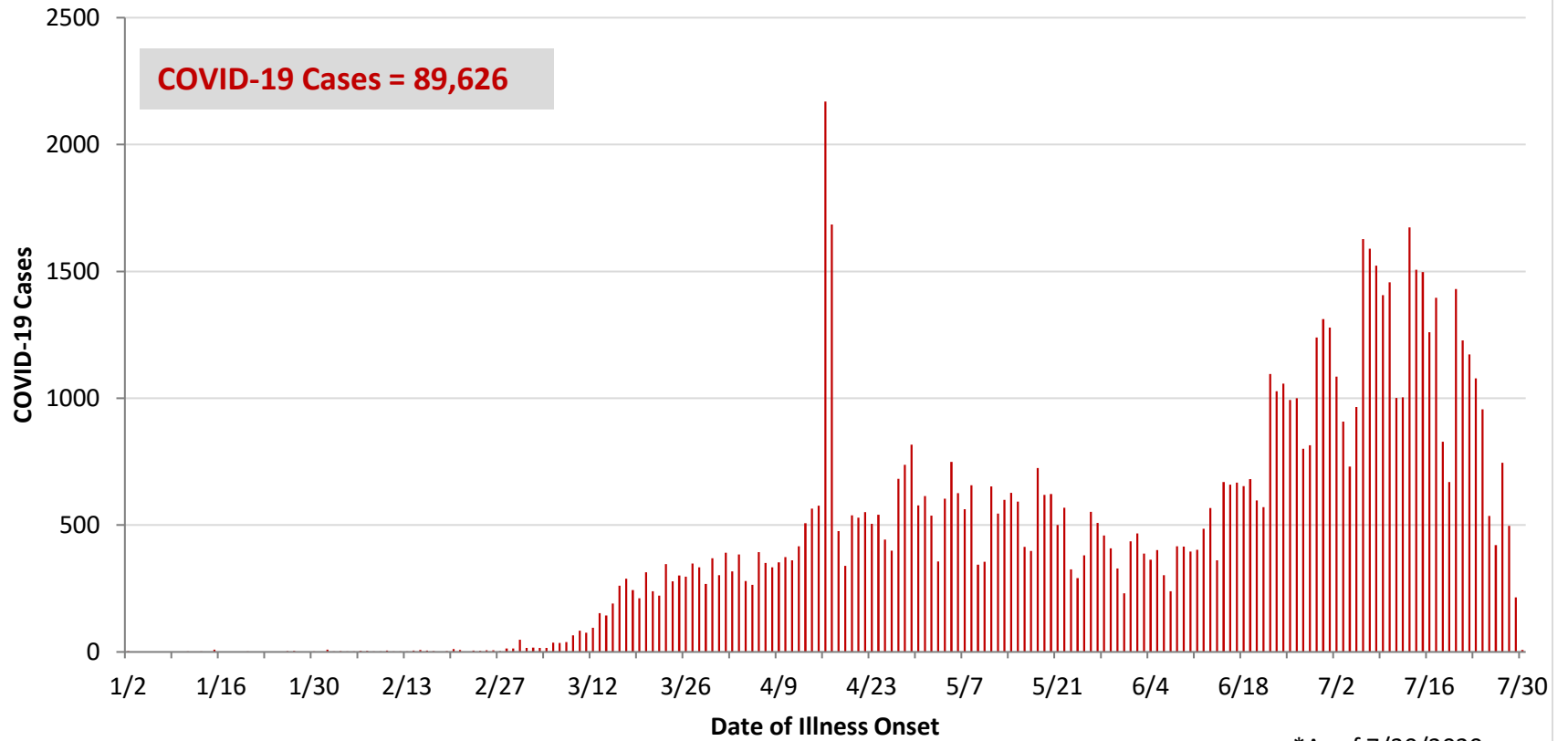
**Ohio, West Central Ohio (WCO), and Montgomery County COVID-19 Cases
As of 7/30/20**

Source: The State of Ohio COVID-19 Dashboard, Ohio Department of Health

Ohio:

Preliminary COVID-19 Cases Ohio, As of 7/30/2020		
Sex	# Cases	% Cases
Female	45,854	51%
Male	42,988	48%
Unknown	784	1%
Total	89,626	100%
Age Group		
Age Group	# Cases	% Cases
0-19	7,815	9%
20-29	18,239	20%
30-39	14,942	17%
40-49	13,001	15%
50-59	13,238	15%
60-69	9,887	11%
70-79	6,211	7%
80+	6,184	7%
Unknown	109	0%
Total	89,626	100%
Hospitalized		
Hospitalized	10,678	11.9%
Deaths		
Deaths	3,442	3.8%
Age Group		
Age Group	Deaths	% of Deaths
0-19	2	0%
20-29	10	0%
30-39	26	1%
40-49	59	2%
50-59	220	6%
60-69	492	14%
70-79	848	25%
80+	1,785	52%
Total	3,442	100%

**PRELIMINARY COVID-19 Cases by Date of Illness Onset
Ohio, 1/2/20 - 7/30/20***

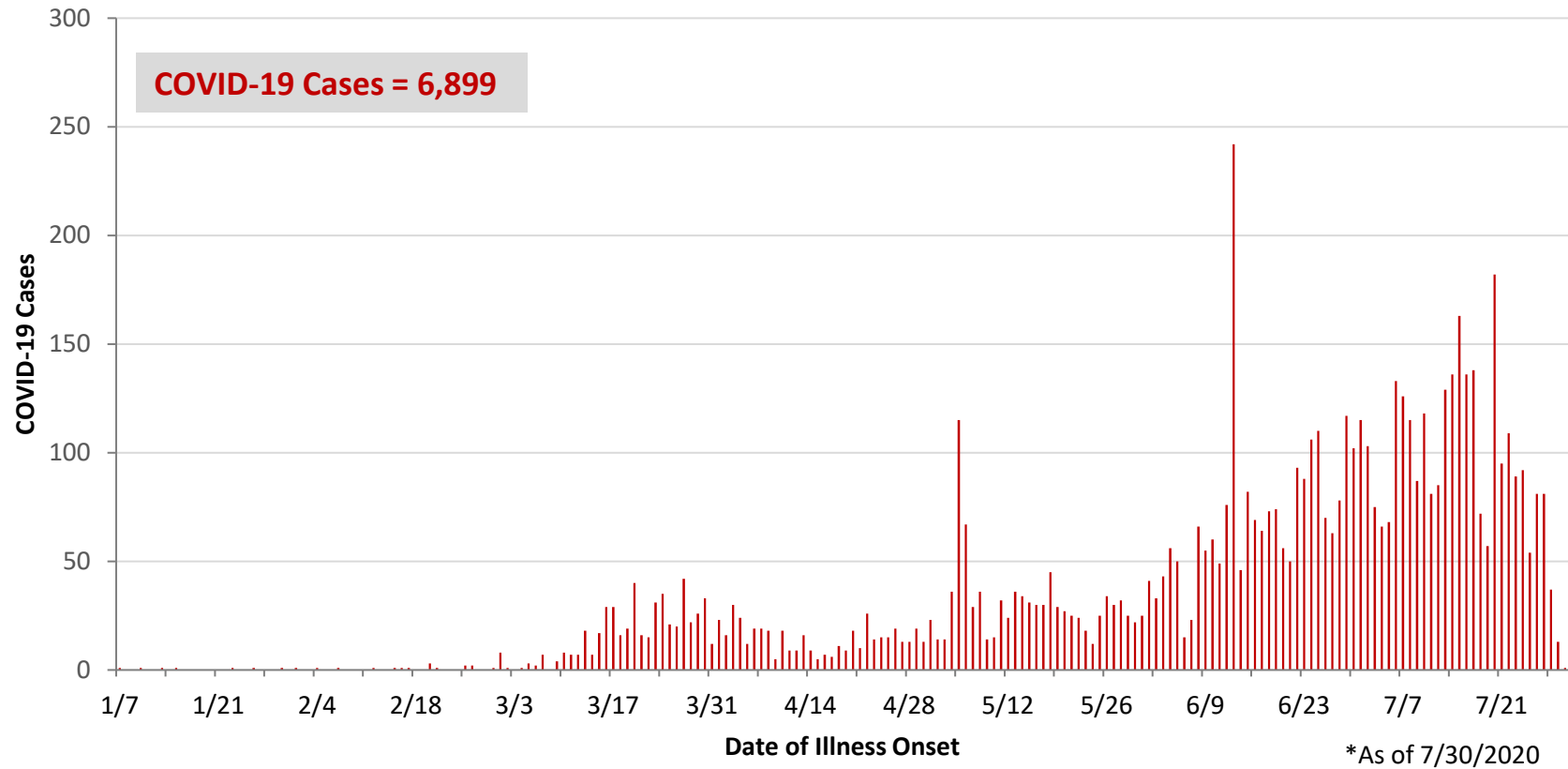


*As of 7/30/2020

WCO:

Preliminary COVID-19 Cases West Central Ohio, As of 7/30/2020		
County	# Cases	% Cases
Champaign	95	1%
Clark	1,046	15%
Darke	308	4%
Greene	599	9%
Miami	728	11%
Montgomery	3,845	56%
Preble	140	2%
Shelby	138	2%
Total	6,899	100%
Sex		
Sex	# Cases	% Cases
Female	3,767	55%
Male	2,987	43%
Unknown	145	2%
Total	6,899	100%
Age Group		
Age Group	# Cases	% Cases
0-19	741	11%
20-29	1,337	19%
30-39	1,166	17%
40-49	930	13%
50-59	992	14%
60-69	799	12%
70-79	491	7%
80+	443	6%
Total	6,899	100%
Hospitalized	871	12.6%
Deaths	163	2.4%
Age Group		
Age Group	Deaths	% of Deaths
0-19	0	0%
20-29	1	1%
30-39	5	3%
40-49	2	1%
50-59	13	8%
60-69	26	16%
70-79	28	17%
80+	88	54%
Total	163	100%

**PRELIMINARY COVID-19 Cases by Date of Illness Onset
West Central Ohio, 1/7/20 - 7/30/20***



Montgomery County:

Preliminary COVID-19 Cases Montgomery County, As of 7/30/2020		
Sex	# Cases	% Cases
Female	2,150	56%
Male	1,648	43%
Unknown	47	1%
Total	3,845	100%
Age Group		
Age Group	# Cases	% Cases
0-19	456	12%
20-29	733	19%
30-39	670	17%
40-49	542	14%
50-59	547	14%
60-69	437	11%
70-79	260	7%
80+	194	5%
Unknown	6	0%
Total	3,845	100%
Hospitalized		
Hospitalized	569	14.8%
Deaths		
Deaths	70	1.8%
Age Group		
Age Group	Deaths	% of Deaths
0-19	0	0%
20-29	1	1%
30-39	4	6%
40-49	2	3%
50-59	8	11%
60-69	14	20%
70-79	11	16%
80+	30	43%
Total	70	100%

Age Group	Hospitalizations	% of Age Group Cases
0-19	26	5.7%
20-29	29	4.0%
30-39	47	7.0%
40-49	65	12.0%
50-59	110	20.1%
60-69	125	28.6%
70-79	100	38.5%
80+	67	34.5%
Total	569	14.8%

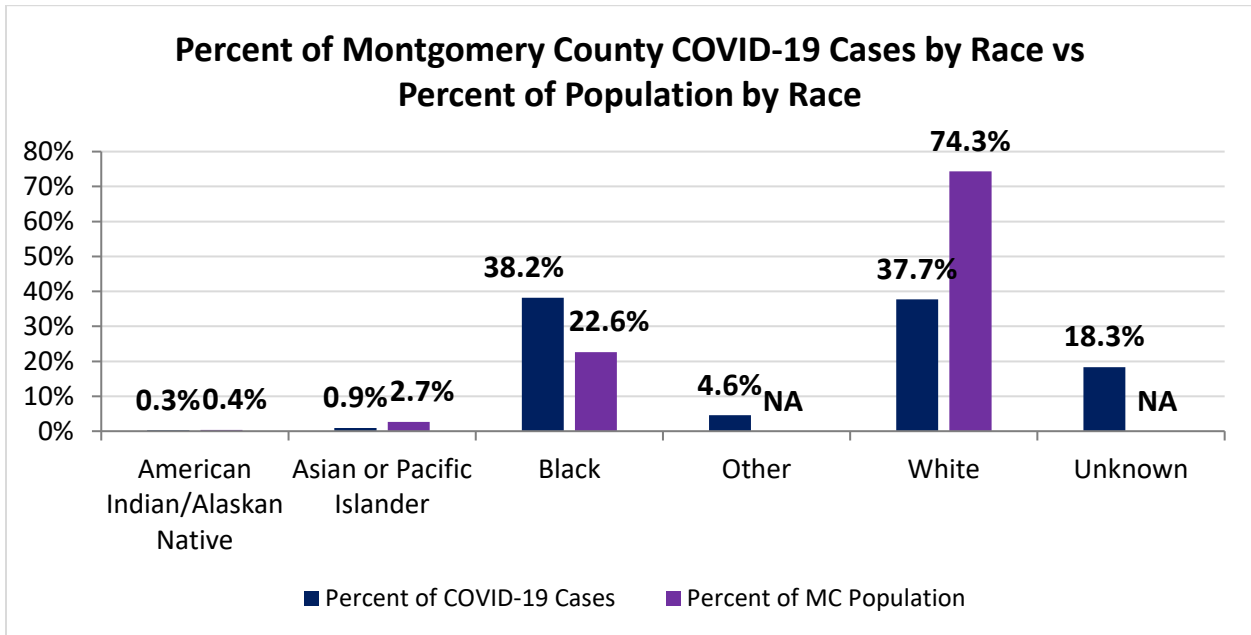
Source: Ohio Disease Reporting System, ODH

Montgomery County COVID-19 Cases by Race As of 7/30/20				
Race	Count	Percent	Rate	Rate Interpretation**
American Indian/Alaskan Native (AI/AN)*	10	0.3%	465.5	1 in 215
Asian	36	0.9%	253.0	1 in 395
Black	1,451	38.2%	1,205.6	1 in 83
Other	173	4.6%	NA	NA
White	1,435	37.7%	362.7	1 in 276
Unknown	697	18.3%	NA	NA
Total	3,802	100%	714.2	1 in 140

*Note. AI/ANs account for 0.4% of Montgomery County’s population, and therefore, rates for this population will be large and may be misleading.

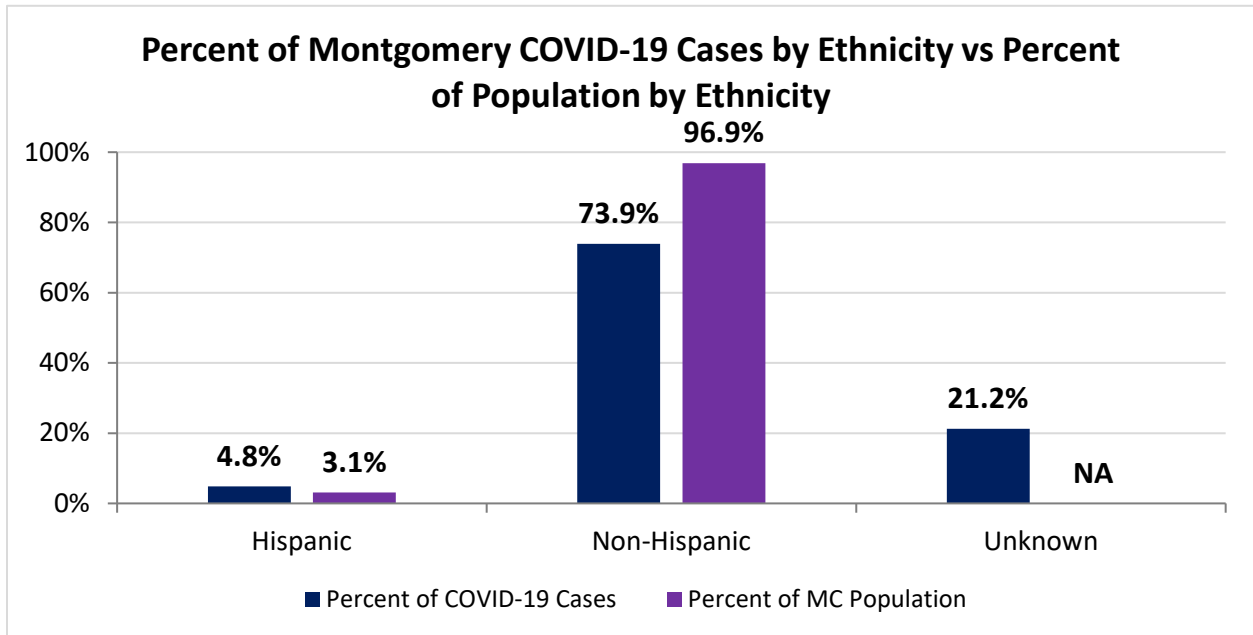
**Rate interpretation represents the number of cases for the given population.

Example - there is a total of 1 case for every 140 Montgomery County residents.



Montgomery County COVID-19 Cases by Ethnicity As of 7/30/20				
Ethnicity	Count	Percent	Rate	Rate Interpretation**
Hispanic	184	4.8%	1,117.9	1 in 89
Non-Hispanic	2,811	73.9%	544.9	1 in 184
Unknown	807	21.2%	NA	NA
Total	3,802	100%	714.2	1 in 140

**Rate interpretation represents the number of cases for the given population.
 Example - there is a total of 1 case for every 140 Montgomery County residents.

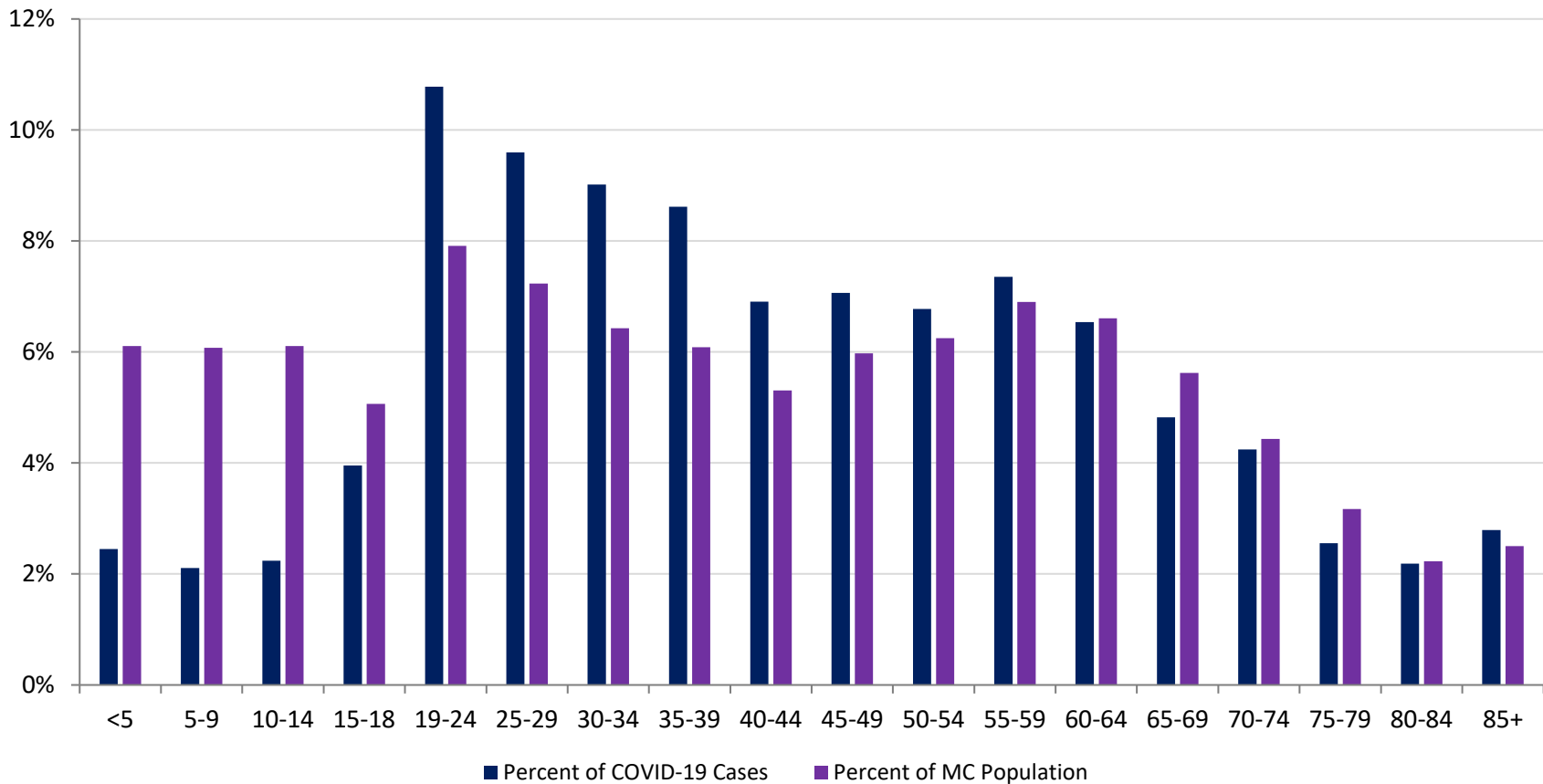


Montgomery County COVID-19 Cases by Health Care Worker Status As of 7/30/20		
Status	#	%
Health Care Worker	386	10.2%
Non-Health Care Worker	2,060	54.2%
Unknown	1,356	35.7%
Total	3,802	100%

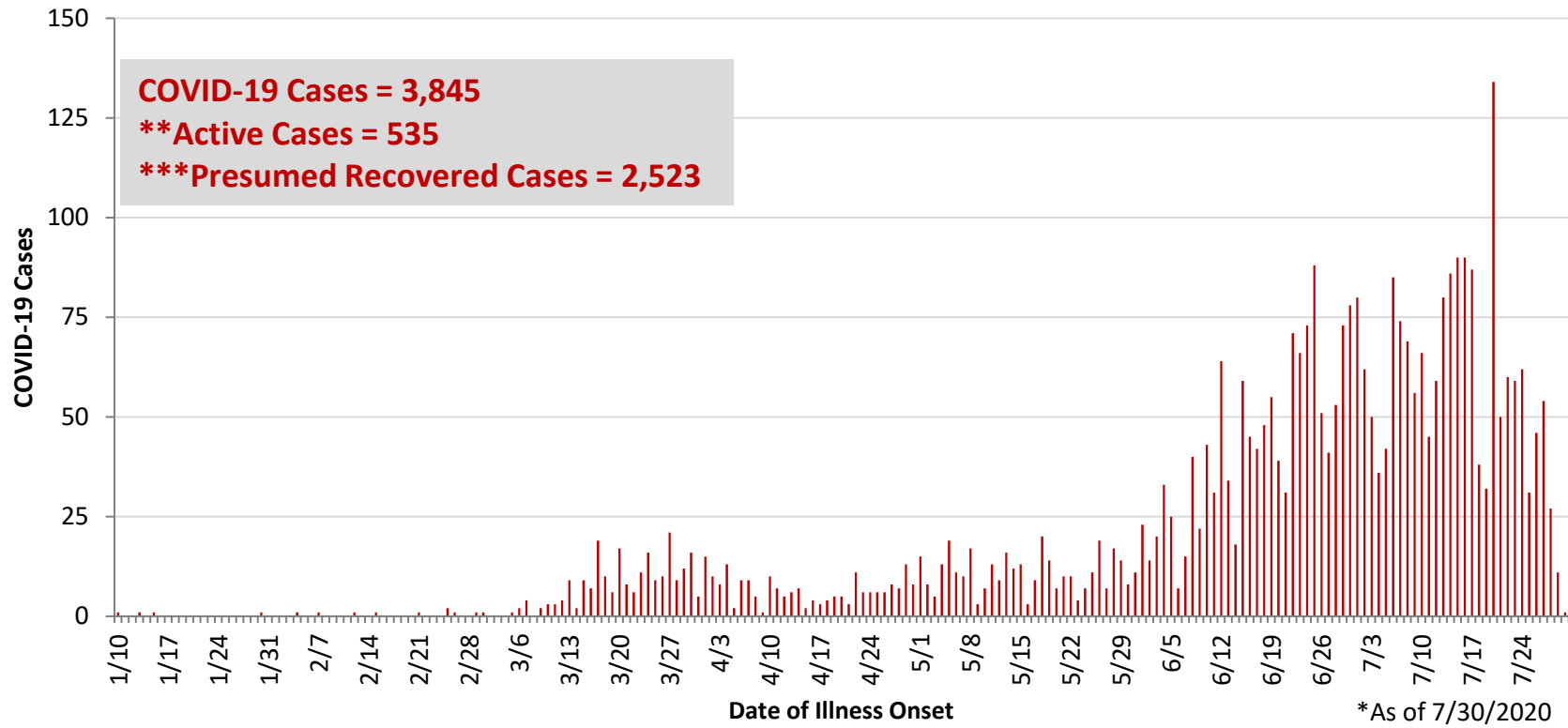
Montgomery County COVID-19 Cases Age Range As of 7/30/20	
Stat	Age in Years
Age Range	<1 - 104
Average Age	42.6
Median Age	40.0

Montgomery County COVID-19 Cases by Age Group As of 7/30/20				
Age Group	# Cases	Rate	Percent of COVID-19 Cases	Percent of MC Population
<5	93	286.0	2.5%	6.1%
5-9	80	247.5	2.1%	6.1%
10-14	85	261.5	2.2%	6.1%
15-18	150	556.4	4.0%	5.1%
19-24	409	970.9	10.8%	7.9%
25-29	364	945.6	9.6%	7.2%
30-34	342	999.7	9.0%	6.4%
35-39	327	1,009.0	8.6%	6.1%
40-44	262	927.3	6.9%	5.3%
45-49	268	842.8	7.1%	6.0%
50-54	257	772.9	6.8%	6.2%
55-59	279	759.6	7.4%	6.9%
60-64	248	705.2	6.5%	6.6%
65-69	183	611.5	4.8%	5.6%
70-74	161	681.9	4.2%	4.4%
75-79	97	574.8	2.6%	3.2%
80-84	83	700.0	2.2%	2.2%
85+	106	796.0	2.8%	2.5%
Total	3,794	712.7	100%	100%

Percent of Montgomery County COVID-19 Cases by Age Group vs Percent of Population by Age Group



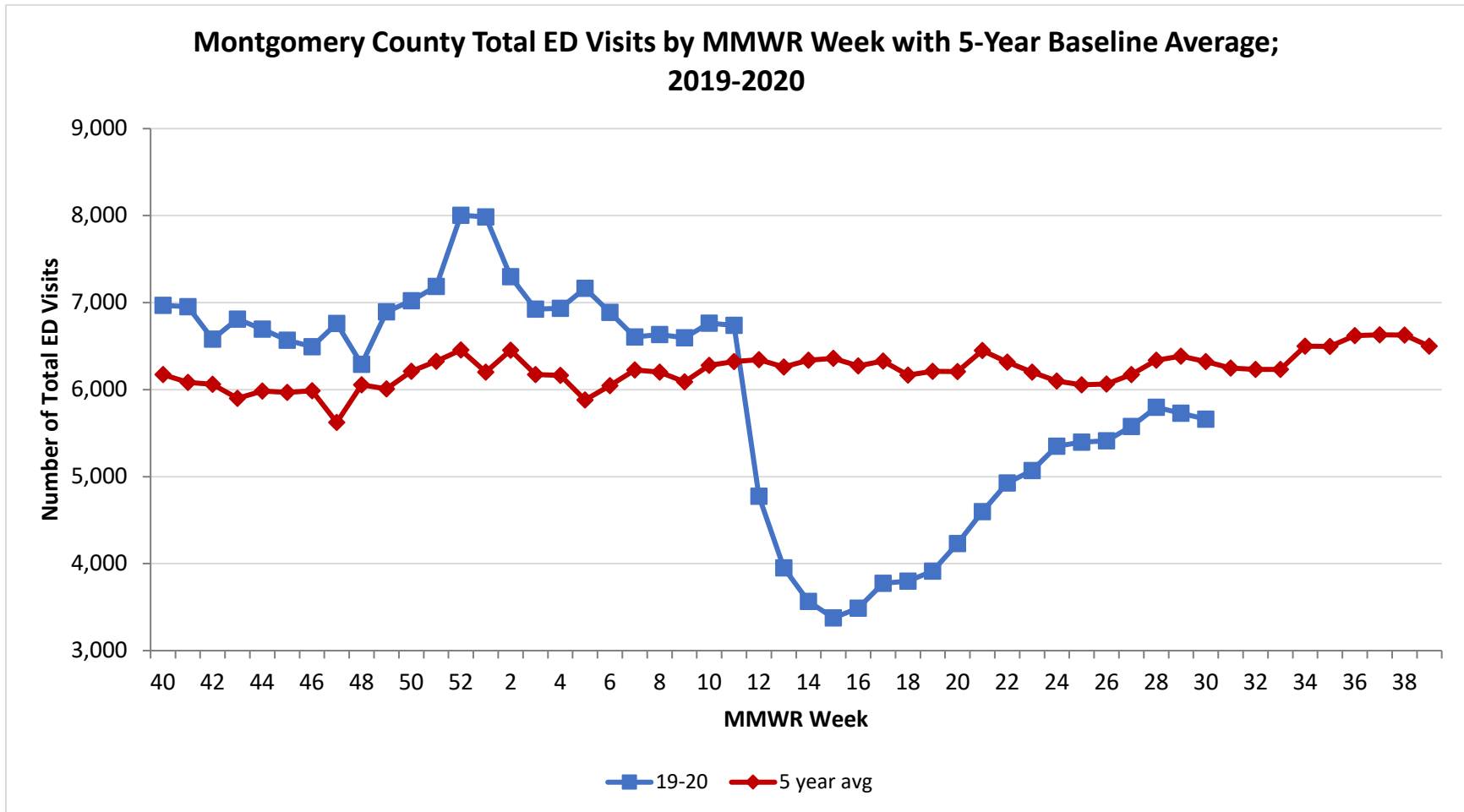
**PRELIMINARY COVID-19 Cases by Date of Illness Onset
Montgomery County, 1/10/20 - 7/30/20***



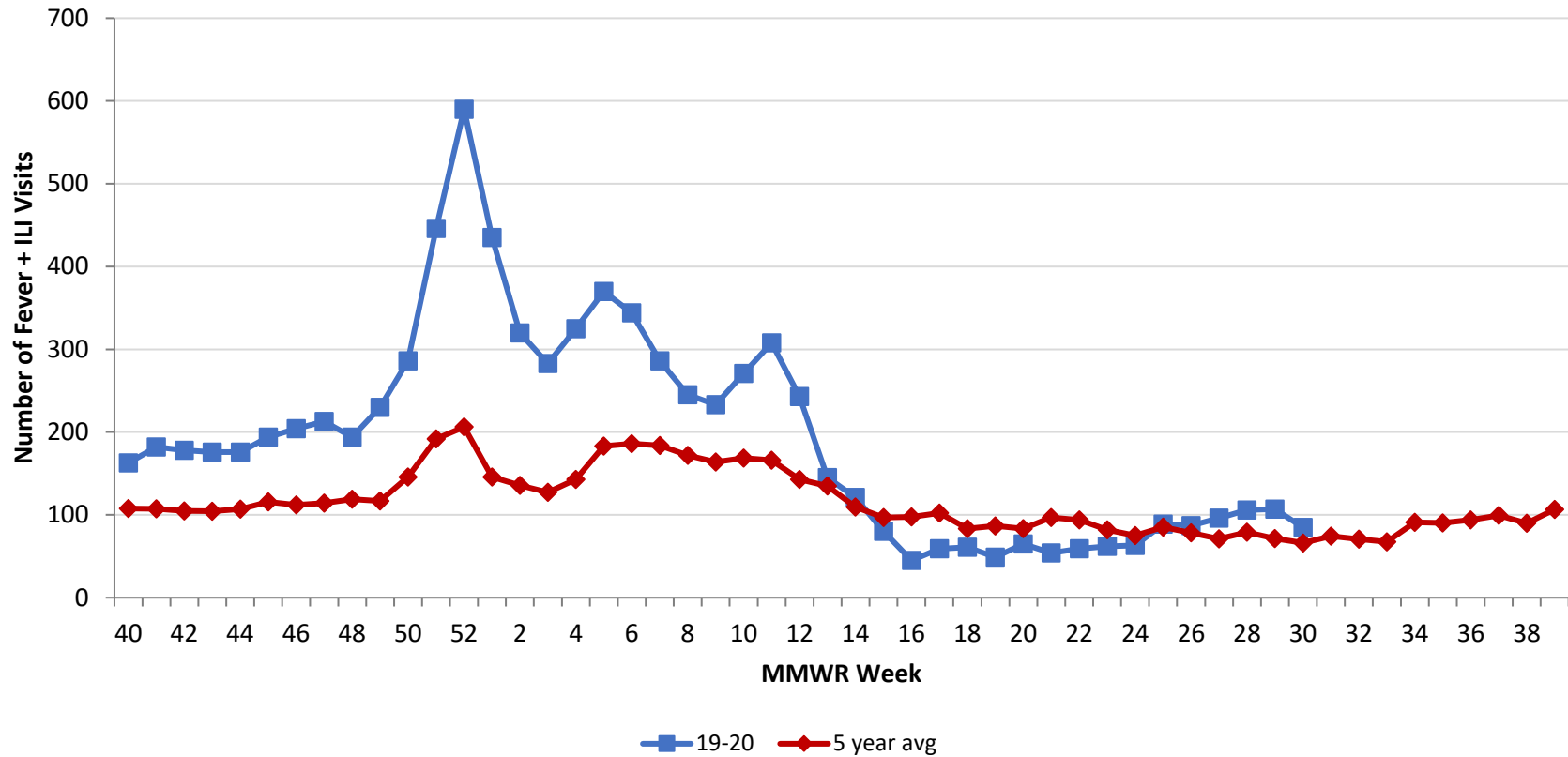
**Active cases are based on the reported illness onset date (using a 10-day window) of reported cases.

***Presumed recovered is defined as cases with a symptom onset date >21 days prior who are not deceased.

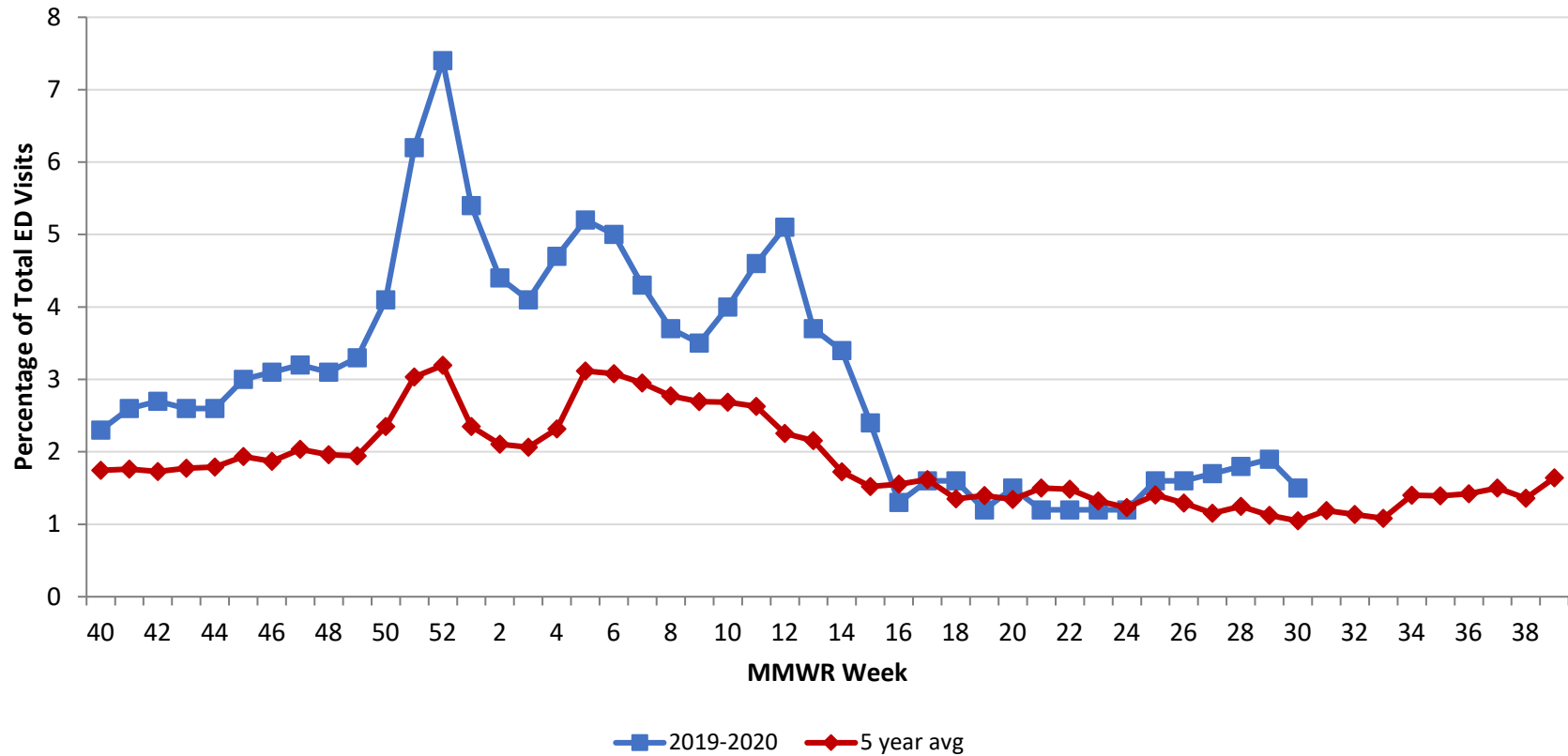
Source: EpiCenter Syndromic Surveillance, Health Monitoring Systems



Montgomery County Fever + ILI Specified ED Visits by MMWR Week with 5-Year Baseline Average; 2019-2020



**Montgomery County Fever + ILI Specified ED Visits (% of Total Visits) by MMWR Week
with 5-Year Baseline Average; 2019-2020**



# Total Visits		
MMWR Week	19-20	5-Year Average
47	6,760	5622.8
48	6,292	6056.8
49	6,895	6008.0
50	7,022	6209.8
51	7,185	6324.4
52	8,005	6456.0
1	7,986	6200.8
2	7,297	6452.4
3	6,924	6172.9
4	6,935	6164.0
5	7,164	5881.8
6	6,888	6045.0
7	6,605	6226.8
8	6,633	6200.6
9	6,597	6088.2
10	6,763	6279.6
11	6,738	6321.6
12	4,775	6345.0
13	3,952	6259.8
14	3,565	6337.4
15	3,376	6360.6
16	3,489	6273.4
17	3,774	6327.8
18	3,798	6165.8
19	3,915	6209.8
20	4,231	6208.4
21	4,598	6,449.6
22	4,928	6,315.4
23	5,070	6,201.0
24	5,350	6,098.4
25	5,398	6,055.8
26	5,412	6,063.2
27	5,577	6,173.0
28	5,797	6,339.0
29	5,728	6384.6
30	5,661	6,322.0

# Fever + ILI Visits		
MMWR Week	19-20	5-Year Average
47	213	114.4
48	194	118.8
49	230	116.8
50	286	145.8
51	446	191.8
52	590	206.2
1	435	145.8
2	320	135.8
3	283	127.4
4	325	142.8
5	370	183.2
6	344	186.2
7	286	183.8
8	245	171.8
9	233	164.0
10	271	168.6
11	308	166.2
12	243	143.0
13	145	134.8
14	121	109.4
15	80	96.8
16	45	97.6
17	59	102.4
18	61	83.4
19	49	86.8
20	65	83.4
21	54	96.8
22	59	93.8
23	62	82.0
24	63	75.0
25	89	85.2
26	87	78.4
27	96	71.2
28	106	79.2
29	107	71.6
30	85	66.2

% Fever + ILI Visits		
MMWR Week	19-20	5-Year Average
47	3.2	2.0
48	3.1	2.0
49	3.3	1.9
50	4.1	2.3
51	6.2	3.0
52	7.4	3.2
1	5.4	2.4
2	4.4	2.1
3	4.1	2.1
4	4.7	2.3
5	5.2	3.1
6	5	3.1
7	4.3	3.0
8	3.7	2.8
9	3.5	2.7
10	4	2.7
11	4.6	2.6
12	5.1	2.3
13	3.7	2.2
14	3.4	1.7
15	2.4	1.5
16	1.3	1.6
17	1.6	1.6
18	1.6	1.4
19	1.2	1.4
20	1.5	1.3
21	1.2	1.5
22	1.2	1.5
23	1.2	1.3
24	1.2	1.2
25	1.6	1.4
26	1.6	1.3
27	1.7	1.2
28	1.8	1.2
29	1.9	1.1
30	1.5	1.0