



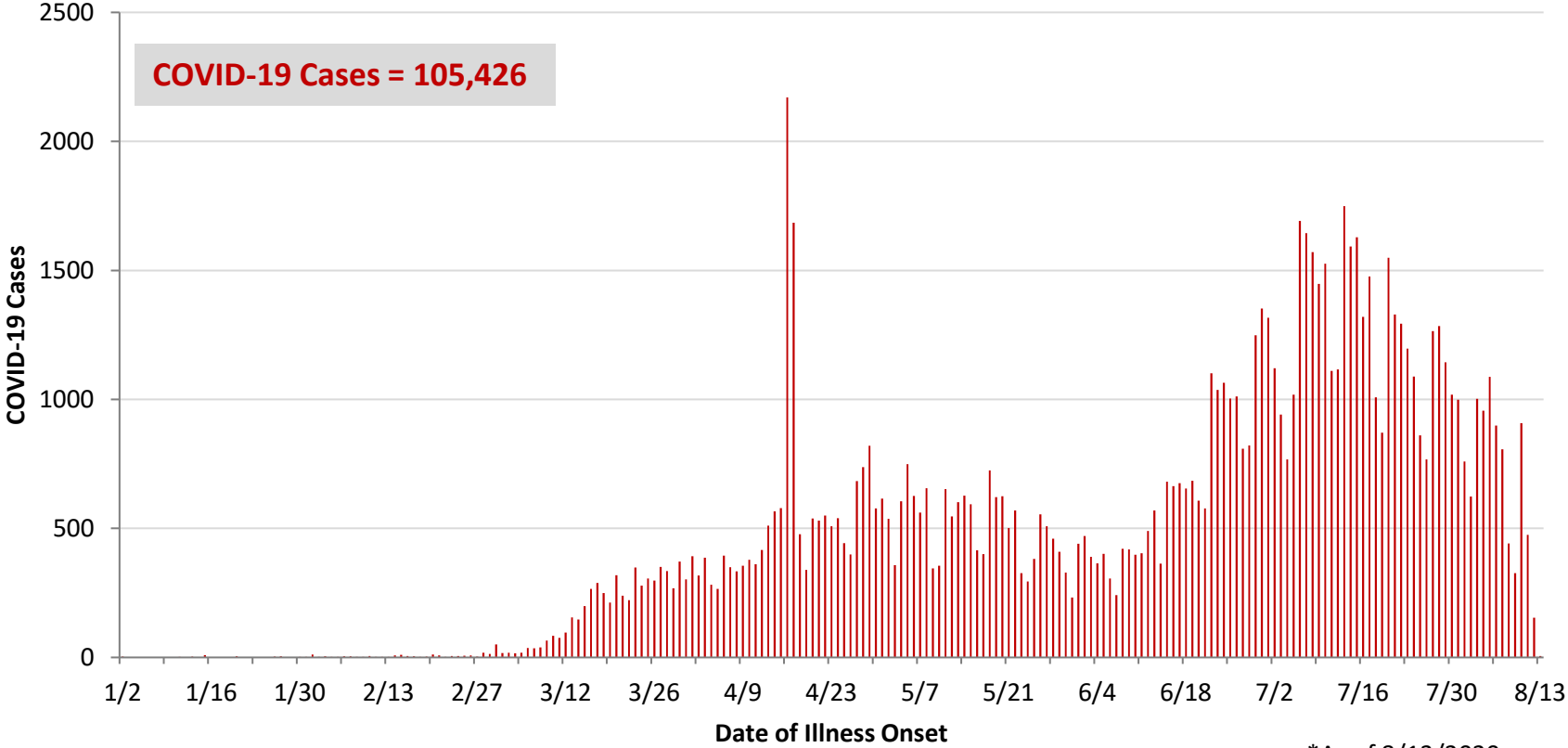
**Ohio, West Central Ohio (WCO), and Montgomery County COVID-19 Cases  
As of 8/13/20**

**Source:** The State of Ohio COVID-19 Dashboard, Ohio Department of Health

**Ohio:**

<b>Preliminary COVID-19 Cases Ohio, As of 8/13/2020</b>		
<b>Sex</b>	<b># Cases</b>	<b>% Cases</b>
Female	54,274	51%
Male	50,306	48%
Unknown	846	1%
<b>Total</b>	<b>105,426</b>	<b>100%</b>
<b>Age Group</b>		
<b>Age Group</b>	<b># Cases</b>	<b>% Cases</b>
0-19	9,669	9%
20-29	21,404	20%
30-39	17,403	17%
40-49	15,316	15%
50-59	15,598	15%
60-69	11,668	11%
70-79	7,267	7%
80+	7,015	7%
Unknown	86	0%
<b>Total</b>	<b>105,426</b>	<b>100%</b>
<b>Hospitalized</b>		
Hospitalized	12,023	11.4%
<b>Deaths</b>		
Deaths	3,755	3.6%
<b>Age Group</b>		
<b>Age Group</b>	<b>Deaths</b>	<b>% of Deaths</b>
0-19	2	0%
20-29	13	0%
30-39	30	1%
40-49	65	2%
50-59	232	6%
60-69	528	14%
70-79	925	25%
80+	1,960	52%
<b>Total</b>	<b>3,755</b>	<b>100%</b>

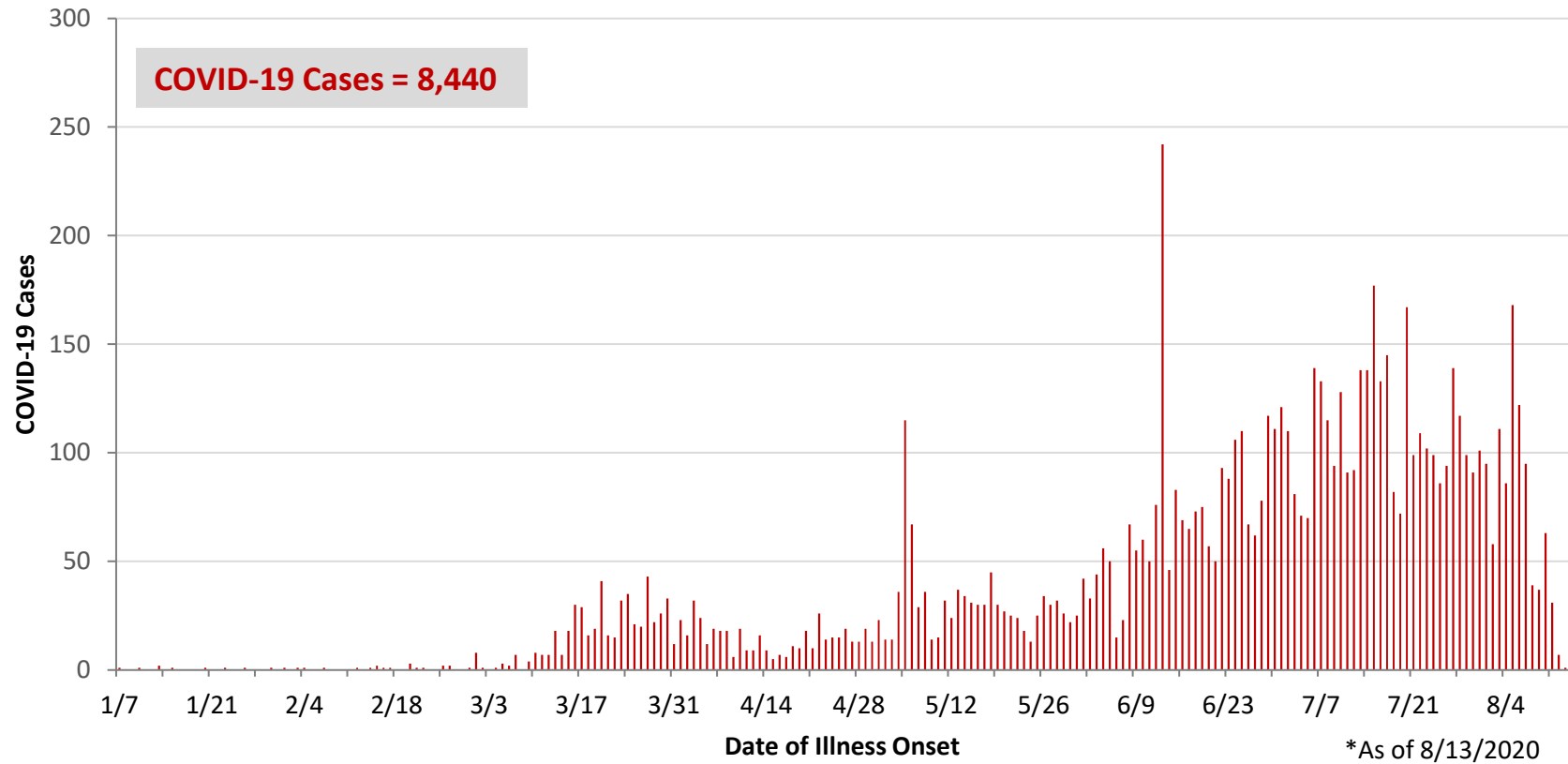
**PRELIMINARY COVID-19 Cases by Date of Illness Onset  
Ohio, 1/2/20 - 8/13/20\***



WCO:

Preliminary COVID-19 Cases West Central Ohio, As of 8/13/2020		
County	# Cases	% Cases
Champaign	192	2%
Clark	1,218	14%
Darke	425	5%
Greene	742	9%
Miami	881	10%
Montgomery	4,544	54%
Preble	219	3%
Shelby	219	3%
<b>Total</b>	<b>8,440</b>	<b>100%</b>
Sex		
Sex	# Cases	% Cases
Female	4,615	55%
Male	3,657	43%
Unknown	168	2%
<b>Total</b>	<b>8,440</b>	<b>100%</b>
Age Group		
Age Group	# Cases	% Cases
0-19	891	11%
20-29	1,594	19%
30-39	1,372	16%
40-49	1,171	14%
50-59	1,236	15%
60-69	977	12%
70-79	633	8%
80+	566	7%
<b>Total</b>	<b>8,440</b>	<b>100%</b>
Hospitalized	1027	12.2%
Deaths	204	2.4%
Age Group		
Age Group	Deaths	% of Deaths
0-19	1	0%
20-29	2	1%
30-39	4	2%
40-49	3	1%
50-59	14	7%
60-69	33	16%
70-79	40	20%
80+	107	52%
<b>Total</b>	<b>204</b>	<b>100%</b>

**PRELIMINARY COVID-19 Cases by Date of Illness Onset  
West Central Ohio, 1/7/20 - 8/13/20\***



**Montgomery County:**

<b>Preliminary COVID-19 Cases Montgomery County, As of 8/13/2020</b>		
<b>Sex</b>	<b># Cases</b>	<b>% Cases</b>
Female	2,550	56%
Male	1,937	43%
Unknown	57	1%
<b>Total</b>	<b>4,544</b>	<b>100%</b>
<b>Age Group</b>		
<b>Age Group</b>	<b># Cases</b>	<b>% Cases</b>
0-19	529	12%
20-29	863	19%
30-39	775	17%
40-49	657	14%
50-59	657	14%
60-69	507	11%
70-79	311	7%
80+	244	5%
Unknown	1	0%
<b>Total</b>	<b>4,544</b>	<b>100%</b>
Hospitalized	642	14.1%
Deaths	101	2.2%
<b>Age Group</b>	<b>Deaths</b>	<b>% of Deaths</b>
0-19	1	1%
20-29	2	2%
30-39	3	3%
40-49	3	3%
50-59	9	9%
60-69	19	19%
70-79	21	21%
80+	43	43%
<b>Total</b>	<b>101</b>	<b>100%</b>

<b>Age Group</b>	<b>Hospitalizations</b>	<b>% of Age Group Cases</b>
0-19	25	4.7%
20-29	36	4.2%
30-39	52	6.7%
40-49	71	10.8%
50-59	123	18.7%
60-69	142	28.0%
70-79	116	37.3%
80+	77	31.6%
<b>Total</b>	<b>642</b>	<b>14.1%</b>

Source: Ohio Disease Reporting System, ODH

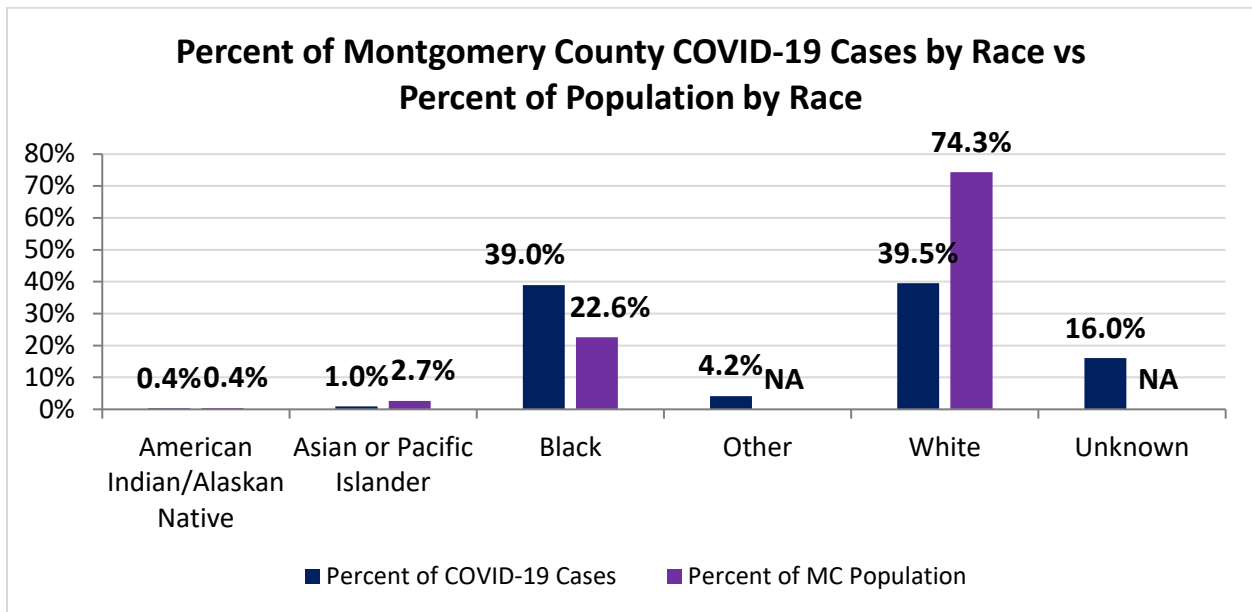
Note. All rates are per 100,000 population.

Montgomery County COVID-19 Cases by Race As of 8/13/20				
Race	Count	Percent	Case Rate	Rate Interpretation**
American Indian/Alaskan Native (AI/AN)*	16	0.4%	744.9	1 in 134
Asian	44	1.0%	309.2	1 in 323
Black	1,765	39.0%	1,466.4	1 in 68
Other	189	4.2%	NA	NA
White	1,789	39.5%	452.2	1 in 221
Unknown	726	16.0%	NA	NA
<b>Total</b>	<b>4,529</b>	<b>100%</b>	<b>850.8</b>	<b>1 in 118</b>

\*Note. AI/ANs account for 0.4% of Montgomery County's population, and therefore, rates for this population will be large and may be misleading.

\*\*Rate interpretation represents the number of cases for the given population.

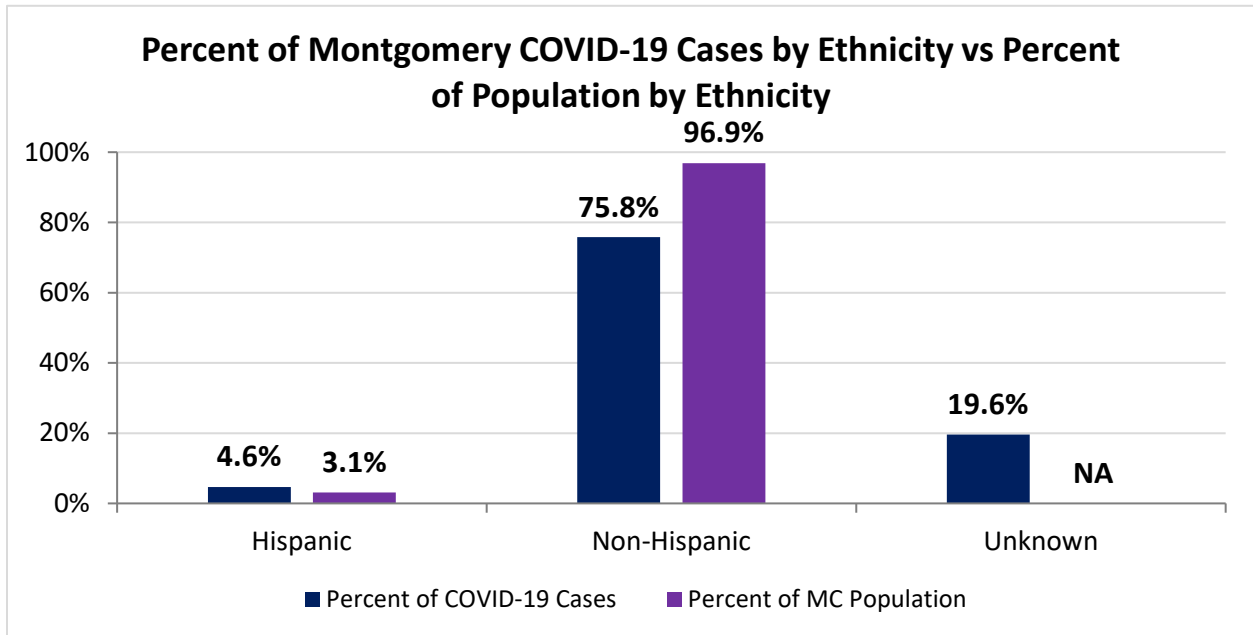
Example - there is a total of 1 case for every 118 Montgomery County residents.



Montgomery County COVID-19 Deaths by Race as of 8/13/2020		
Race	Count	Death Rate
American Indian/Alaskan Native	1	46.6
Asian or Pacific Islander	2	14.1
Black	40	33.2
Other	1	NA
White	58	14.7
Unknown	1	NA
<b>Total</b>	<b>103</b>	<b>19.3</b>

<b>Montgomery County COVID-19 Cases by Ethnicity As of 8/13/20</b>				
<b>Ethnicity</b>	<b>Count</b>	<b>Percent</b>	<b>Case Rate</b>	<b>Rate Interpretation**</b>
Hispanic	210	4.6%	1,275.8	1 in 78
Non-Hispanic	3,432	75.8%	665.3	1 in 150
Unknown	887	19.6%	NA	NA
<b>Total</b>	<b>4,529</b>	<b>100%</b>	<b>850.8</b>	<b>1 in 118</b>

\*\*Rate interpretation represents the number of cases for the given population.  
 Example - there is a total of 1 case for every 118 Montgomery County residents.



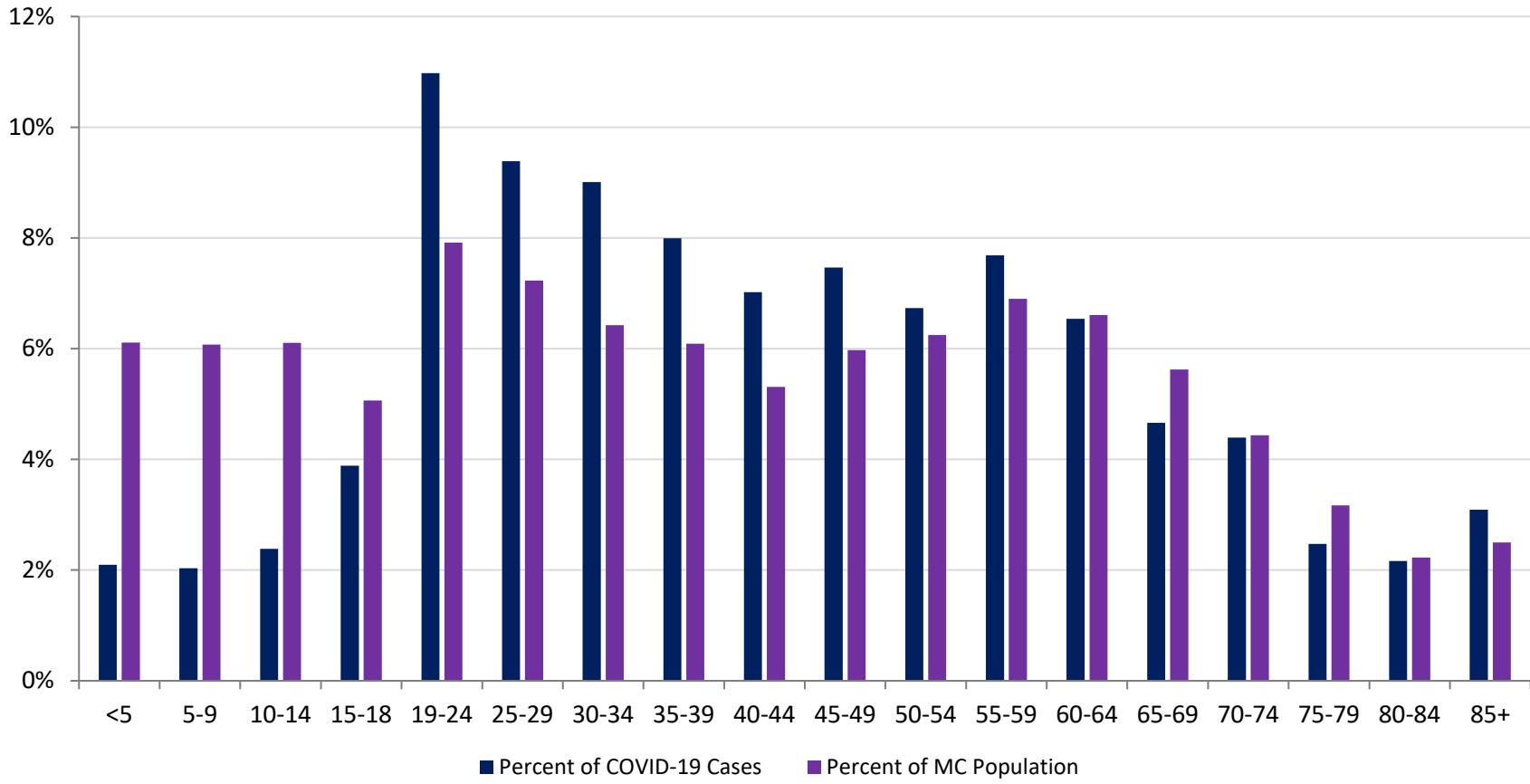
<b>Montgomery County COVID-19 Cases by Health Care Worker Status As of 8/13/20</b>		
<b>Status</b>	<b>#</b>	<b>%</b>
Health Care Worker	473	10.4%
Non-Health Care Worker	2,467	54.5%
Unknown	1,589	35.1%
<b>Total</b>	<b>4,529</b>	<b>100%</b>

<b>Montgomery County COVID-19 Cases Age Range As of 8/13/20</b>	
<b>Stat</b>	<b>Age in Years</b>
Age Range	<1 - 104
Average Age	43.0
Median Age	41.0

<b>Montgomery County COVID-19 Cases by Age Group As of 8/13/20</b>				
<b>Age Group</b>	<b># Cases</b>	<b>Case Rate</b>	<b>Percent of COVID-19 Cases</b>	<b>Percent of MC Population</b>
<5	95	292.1	2.1%	6.1%
5-9	92	284.6	2.0%	6.1%
10-14	108	332.2	2.4%	6.1%
15-18	176	652.8	3.9%	5.1%
19-24	497	1,179.8	11.0%	7.9%
25-29	425	1,104.1	9.4%	7.2%
30-34	408	1,192.7	9.0%	6.4%
35-39	362	1,117.0	8.0%	6.1%
40-44	318	1,125.5	7.0%	5.3%
45-49	338	1,062.9	7.5%	6.0%
50-54	305	917.2	6.7%	6.2%
55-59	348	947.5	7.7%	6.9%
60-64	296	841.7	6.5%	6.6%
65-69	211	705.1	4.7%	5.6%
70-74	199	842.9	4.4%	4.4%
75-79	112	663.7	2.5%	3.2%
80-84	98	826.5	2.2%	2.2%
85+	140	1,051.4	3.1%	2.5%
<b>Total</b>	<b>4,528</b>	<b>850.6</b>	<b>100%</b>	<b>100%</b>



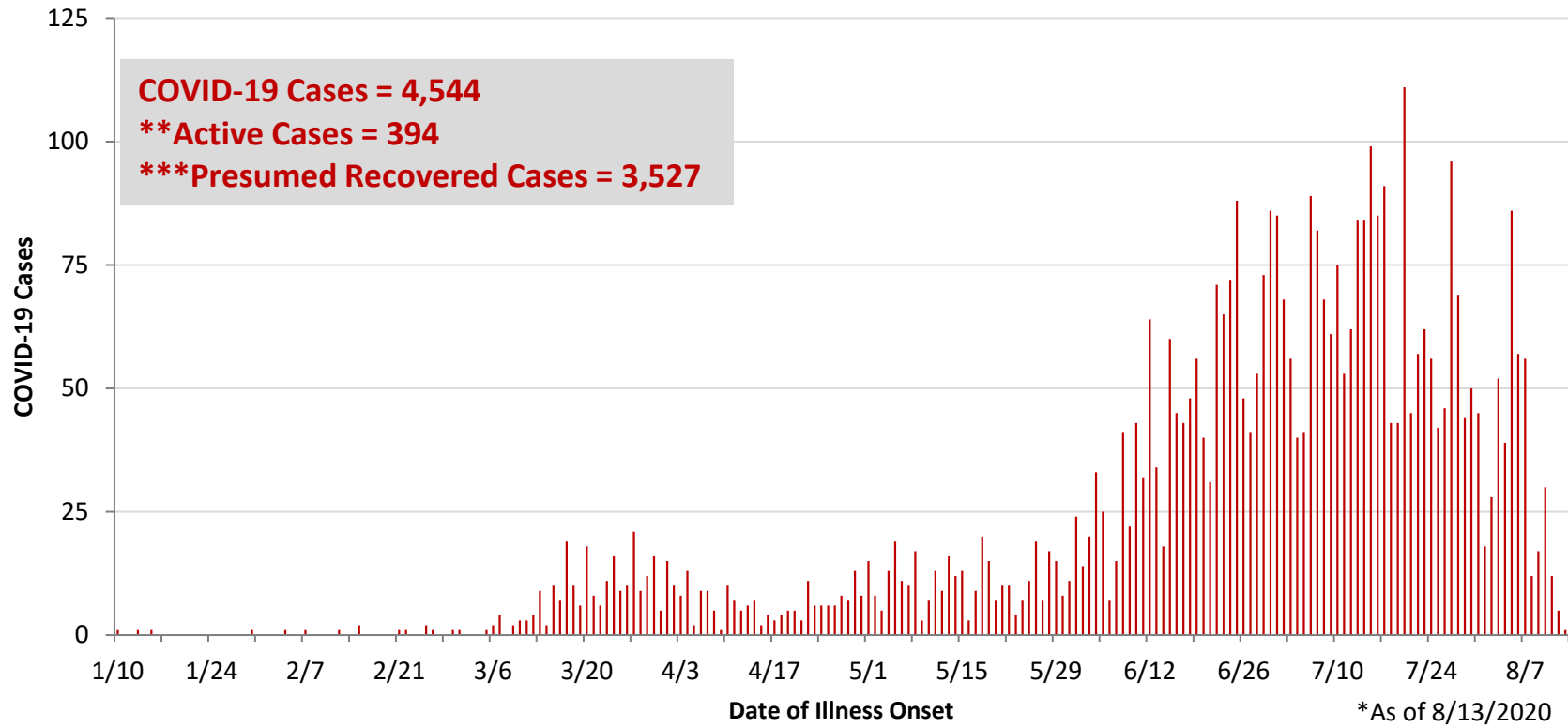
Percent of Montgomery County COVID-19 Cases by Age Group vs Percent of Population by Age Group



**PRELIMINARY Montgomery County COVID-19 Cases by Age Group – Cases before 6/1 and June Cases vs July Cases As of 8/13/2020 (% change from June to July)**

<b>Age Group</b>	<b># Cases &lt;6/1</b>	<b>% of Cases &lt;6/1</b>	<b>Case Rate &lt;6/1</b>	<b># Cases June</b>	<b>% of Cases June</b>	<b>Case Rate June</b>	<b># Cases July</b>	<b>% of Cases July</b>	<b>Case Rate July</b>	<b>% Change # of Cases</b>
<5	12	1.5%	36.9	39	3.0%	119.9	42	2.1%	129.2	7.7%
5-9	7	0.9%	21.7	30	2.3%	92.8	49	2.4%	151.6	63.3%
10-14	9	1.2%	27.7	29	2.2%	89.2	55	2.7%	169.2	89.7%
15-18	16	2.0%	59.3	60	4.6%	222.5	87	4.3%	322.7	45.0%
19-24	57	7.3%	135.3	153	11.7%	363.2	236	11.6%	560.2	54.2%
25-29	52	6.6%	135.1	148	11.3%	384.5	186	9.2%	483.2	25.7%
30-34	66	8.4%	192.9	133	10.2%	388.8	173	8.5%	505.7	30.1%
35-39	63	8.1%	194.4	123	9.4%	379.5	160	7.9%	493.7	30.1%
40-44	61	7.8%	215.9	83	6.3%	293.8	145	7.1%	513.2	74.7%
45-49	70	9.0%	220.1	94	7.2%	295.6	133	6.5%	418.3	41.5%
50-54	75	9.6%	225.5	75	5.7%	225.5	132	6.5%	397.0	76.0%
55-59	90	11.5%	245.0	77	5.9%	209.6	143	7.0%	389.3	85.7%
60-64	66	8.4%	187.7	68	5.2%	193.4	140	6.9%	398.1	105.9%
65-69	53	6.8%	177.1	46	3.5%	153.7	99	4.9%	330.8	115.2%
70-74	43	5.5%	182.1	45	3.4%	190.6	90	4.4%	381.2	100.0%
75-79	16	2.0%	94.8	34	2.6%	201.5	53	2.6%	314.1	55.9%
80-84	14	1.8%	118.1	29	2.2%	244.6	44	2.2%	371.1	51.7%
85+	12	1.5%	90.1	43	3.3%	322.9	65	3.2%	488.1	51.2%
<b>Total</b>	<b>782</b>	<b>100.0%</b>	<b>146.9</b>	<b>1,309</b>	<b>100%</b>	<b>245.9</b>	<b>2,032</b>	<b>100%</b>	<b>381.7</b>	<b>55.2%</b>

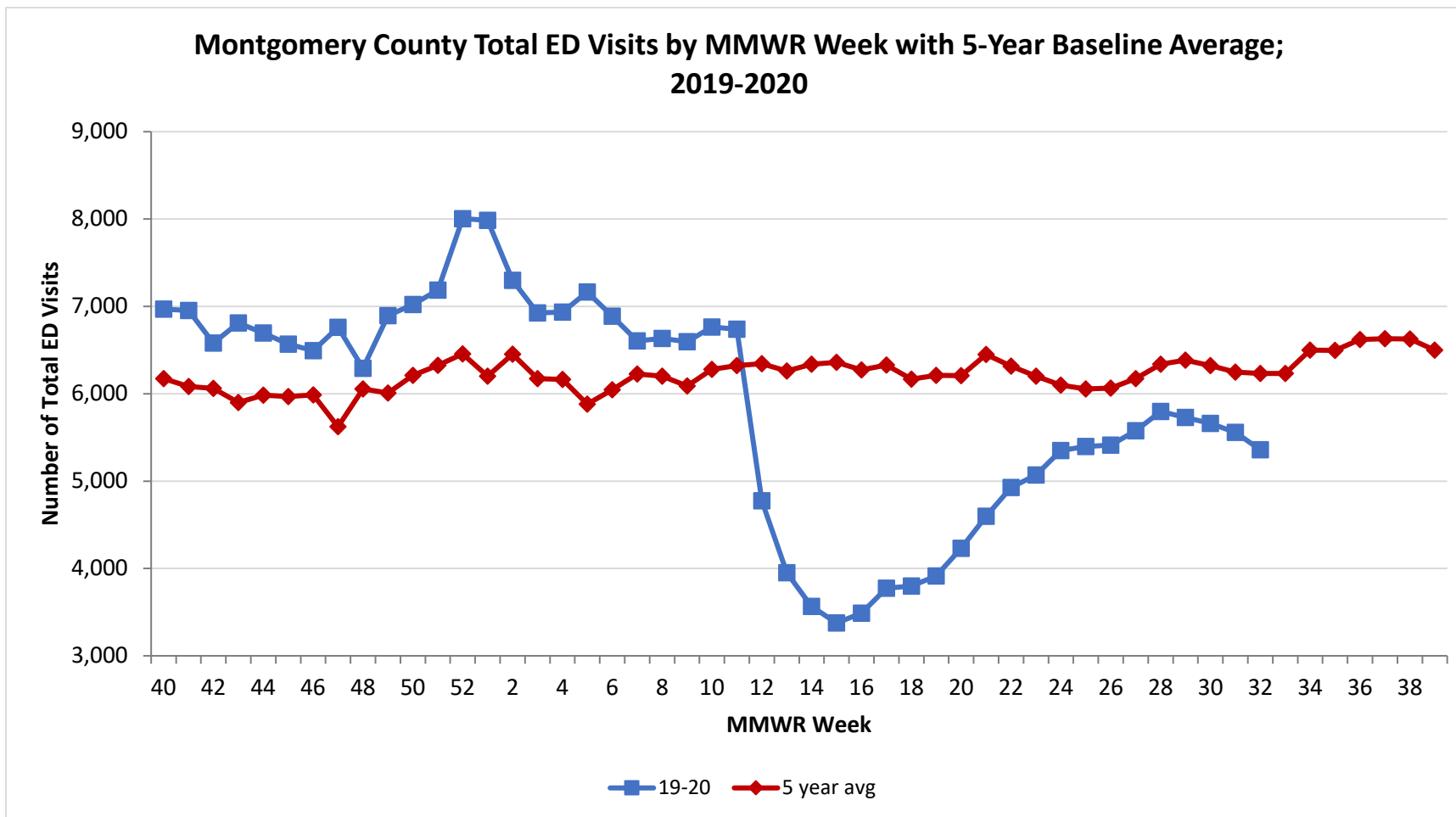
**PRELIMINARY COVID-19 Cases by Date of Illness Onset  
Montgomery County, 1/10/20 - 8/13/20\***



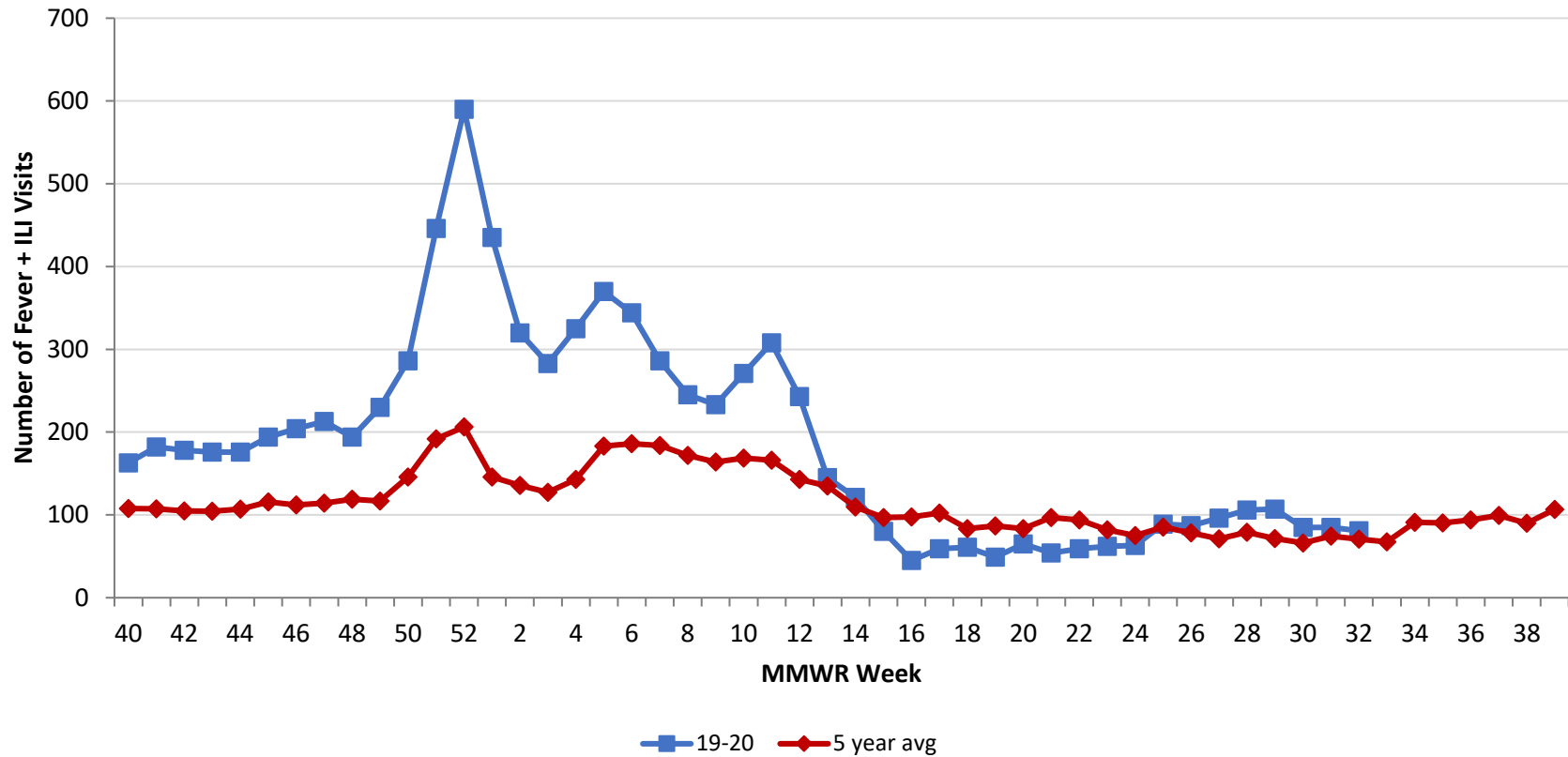
\*\*Active cases are based on the reported illness onset date (using a 10-day window) of reported cases.

\*\*\*Presumed recovered is defined as cases with a symptom onset date >21 days prior who are not deceased.

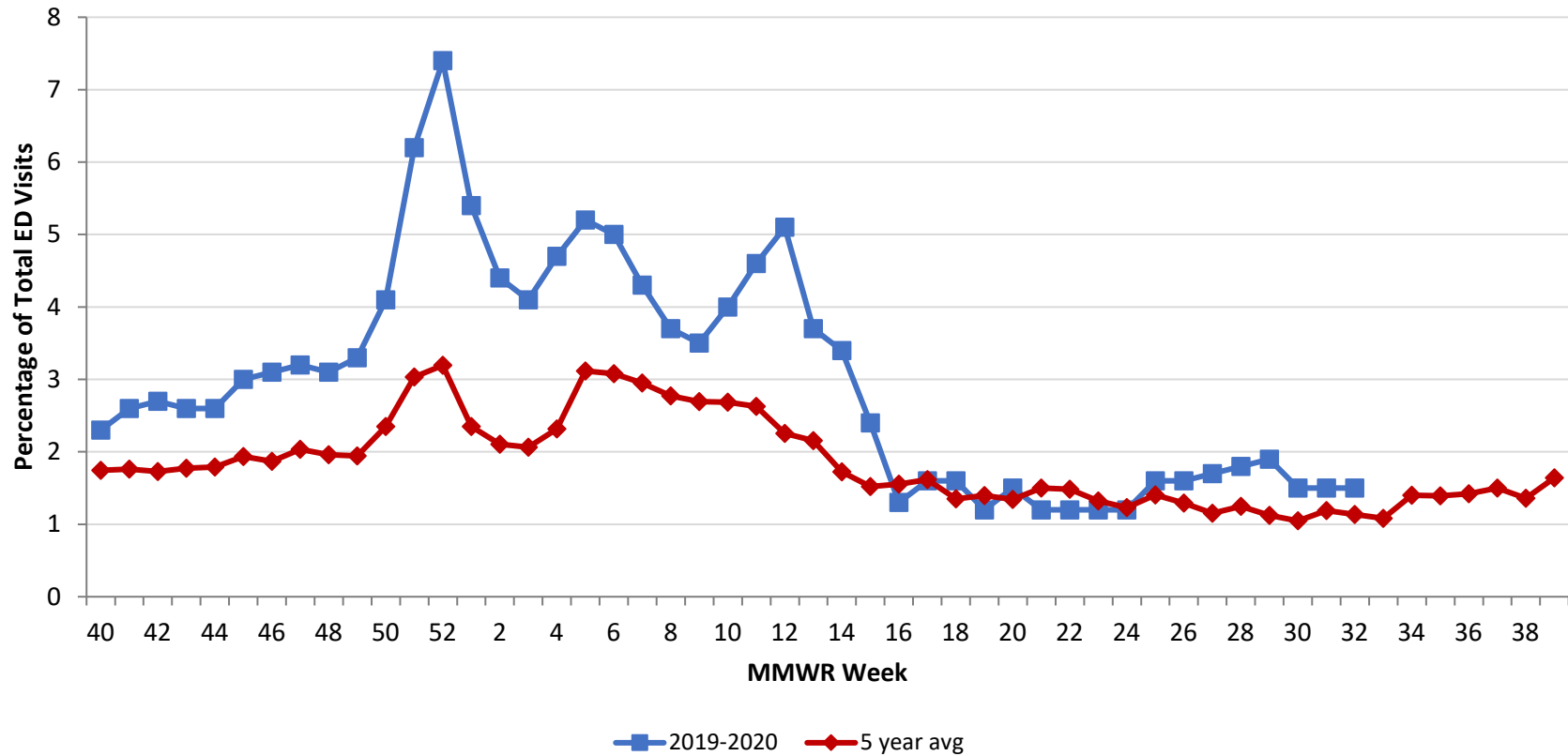
Source: EpiCenter Syndromic Surveillance, Health Monitoring Systems



Montgomery County Fever + ILI Specified ED Visits by MMWR Week with 5-Year Baseline Average; 2019-2020



**Montgomery County Fever + ILI Specified ED Visits (% of Total Visits) by MMWR Week  
with 5-Year Baseline Average; 2019-2020**



# Total Visits		
MMWR Week	19-20	5-Year Average
49	6,895	6008.0
50	7,022	6209.8
51	7,185	6324.4
52	8,005	6456.0
1	7,986	6200.8
2	7,297	6452.4
3	6,924	6172.9
4	6,935	6164.0
5	7,164	5881.8
6	6,888	6045.0
7	6,605	6226.8
8	6,633	6200.6
9	6,597	6088.2
10	6,763	6279.6
11	6,738	6321.6
12	4,775	6345.0
13	3,952	6259.8
14	3,565	6337.4
15	3,376	6360.6
16	3,489	6273.4
17	3,774	6327.8
18	3,798	6165.8
19	3,915	6209.8
20	4,231	6208.4
21	4,598	6,449.6
22	4,928	6,315.4
23	5,070	6,201.0
24	5,350	6,098.4
25	5,398	6,055.8
26	5,412	6,063.2
27	5,577	6,173.0
28	5,797	6,339.0
29	5,728	6384.6
30	5,661	6,322.0
31	5,557	6,247.2
32	5,359	6232.8

# Fever + ILI Visits		
MMWR Week	19-20	5-Year Average
49	230	116.8
50	286	145.8
51	446	191.8
52	590	206.2
1	435	145.8
2	320	135.8
3	283	127.4
4	325	142.8
5	370	183.2
6	344	186.2
7	286	183.8
8	245	171.8
9	233	164.0
10	271	168.6
11	308	166.2
12	243	143.0
13	145	134.8
14	121	109.4
15	80	96.8
16	45	97.6
17	59	102.4
18	61	83.4
19	49	86.8
20	65	83.4
21	54	96.8
22	59	93.8
23	62	82.0
24	63	75.0
25	89	85.2
26	87	78.4
27	96	71.2
28	106	79.2
29	107	71.6
30	85	66.2
31	85	74.2
32	81	70.8

% Fever + ILI Visits		
MMWR Week	19-20	5-Year Average
49	3.3	1.9
50	4.1	2.3
51	6.2	3.0
52	7.4	3.2
1	5.4	2.4
2	4.4	2.1
3	4.1	2.1
4	4.7	2.3
5	5.2	3.1
6	5	3.1
7	4.3	3.0
8	3.7	2.8
9	3.5	2.7
10	4	2.7
11	4.6	2.6
12	5.1	2.3
13	3.7	2.2
14	3.4	1.7
15	2.4	1.5
16	1.3	1.6
17	1.6	1.6
18	1.6	1.4
19	1.2	1.4
20	1.5	1.3
21	1.2	1.5
22	1.2	1.5
23	1.2	1.3
24	1.2	1.2
25	1.6	1.4
26	1.6	1.3
27	1.7	1.2
28	1.8	1.2
29	1.9	1.1
30	1.5	1.0
30	1.5	1.2
32	1.5	1.1