



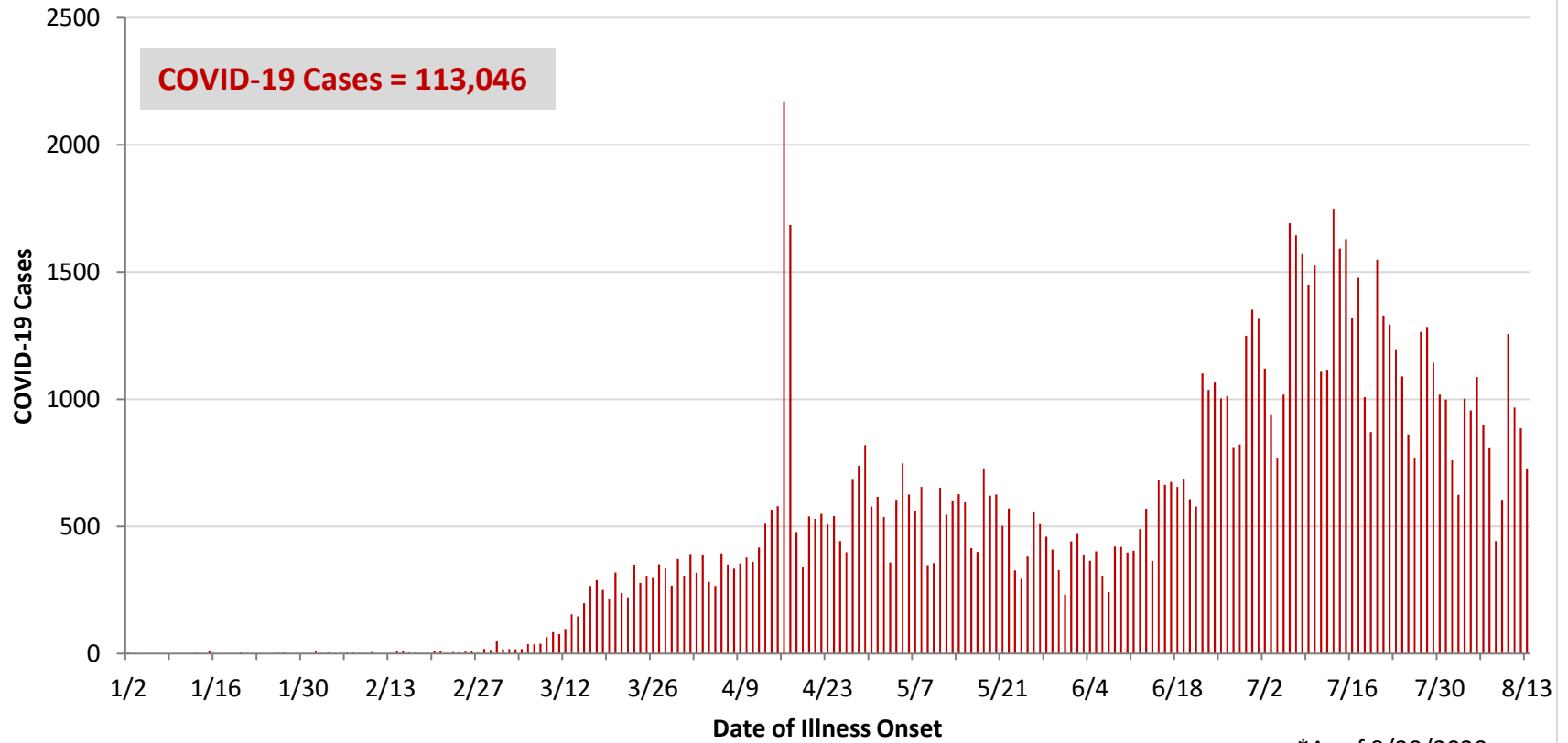
**Ohio, West Central Ohio (WCO), and Montgomery County COVID-19 Cases
As of 8/21/20**

Source: The State of Ohio COVID-19 Dashboard, Ohio Department of Health

Ohio:

Preliminary COVID-19 Cases Ohio, As of 8/21/2020		
Sex	# Cases	% Cases
Female	58,496	52%
Male	53,726	48%
Unknown	824	1%
Total	113,046	100%
Age Group		
Age Group	# Cases	% Cases
0-19	10,688	9%
20-29	22,774	20%
30-39	18,519	16%
40-49	16,388	14%
50-59	16,737	15%
60-69	12,517	11%
70-79	7,828	7%
80+	7,512	7%
Unknown	83	0%
Total	113,046	100%
Hospitalized		
Hospitalized	12,436	11.0%
Deaths		
Deaths	3,955	3.5%
Age Group		
Age Group	Deaths	% of Deaths
0-19	2	0%
20-29	13	0%
30-39	30	1%
40-49	68	2%
50-59	243	6%
60-69	558	14%
70-79	982	25%
80+	2,059	52%
Total	3,955	100%

**PRELIMINARY COVID-19 Cases by Date of Illness Onset
Ohio, 1/2/20 - 8/20/20***

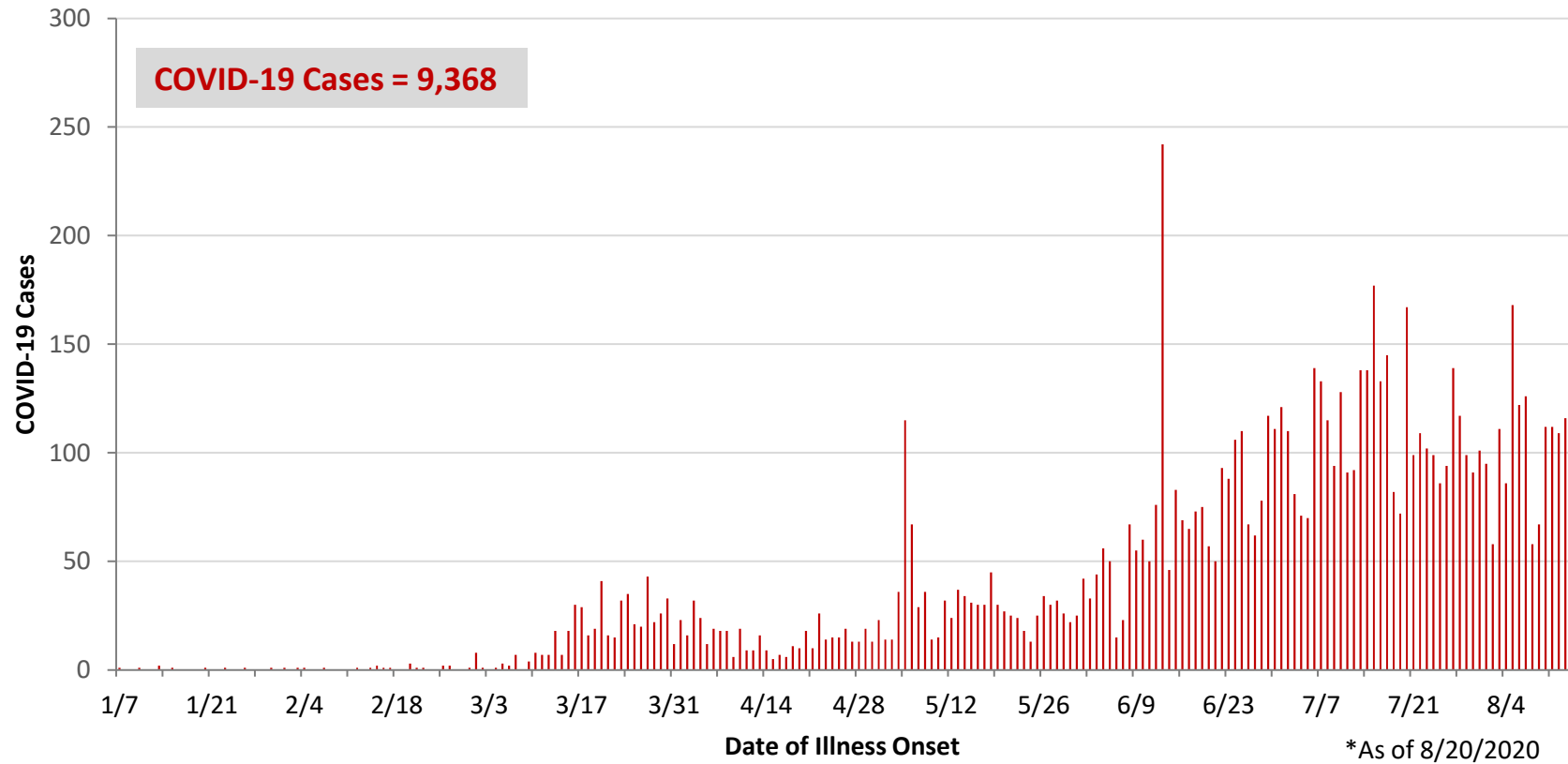


WCO:

Preliminary COVID-19 Cases West Central Ohio, As of 8/21/2020		
County	# Cases	% Cases
Champaign	227	2%
Clark	1,312	14%
Darke	516	6%
Greene	854	9%
Miami	974	10%
Montgomery	4,908	52%
Preble	298	3%
Shelby	279	3%
Total	9,368	100%
Sex		
Sex	# Cases	% Cases
Female	5,140	55%
Male	4,063	43%
Unknown	165	2%
Total	9,368	100%
Age Group		
Age Group	# Cases	% Cases
0-19	1,006	11%
20-29	1,752	19%
30-39	1,484	16%
40-49	1,287	14%
50-59	1,383	15%
60-69	1,088	12%
70-79	720	8%
80+	636	7%
Unknown	12	0%
Total	9,368	100%
Hospitalized	1,149	12.3%
Deaths	227	2.4%
Age Group		
Age Group	Deaths	% of Deaths
0-19	1	0%
20-29	2	1%
30-39	4	2%
40-49	5	2%
50-59	15	7%
60-69	35	15%
70-79	47	21%
80+	118	52%
Total	227	100%

8/21/20

**PRELIMINARY COVID-19 Cases by Date of Illness Onset
West Central Ohio, 1/7/20 - 8/20/20***



Montgomery County:

Preliminary COVID-19 Cases Montgomery County, As of 8/21/2020		
Sex	# Cases	% Cases
Female	2,671	56%
Male	2,018	43%
Unknown	52	1%
Total	4,741	100%
Age Group		
Age Group	# Cases	% Cases
0-19	588	12%
20-29	930	19%
30-39	810	17%
40-49	704	14%
50-59	707	14%
60-69	562	11%
70-79	337	7%
80+	269	5%
Unknown	1	0%
Total	4,908	100%
Hospitalized		
Hospitalized	700	14.3%
Deaths		
Deaths	115	2.3%
Age Group		
Age Group	Deaths	% of Deaths
0-19	1	1%
20-29	2	2%
30-39	3	3%
40-49	5	4%
50-59	10	9%
60-69	21	18%
70-79	25	22%
80+	48	42%
Total	115	100%

Age Group	Hospitalizations	% of Age Group Cases
0-19	26	4.4%
20-29	38	4.1%
30-39	60	7.4%
40-49	76	10.8%
50-59	133	18.8%
60-69	152	27.0%
70-79	130	38.6%
80+	85	31.6%
Total	700	14.3%

Source: Ohio Disease Reporting System, ODH

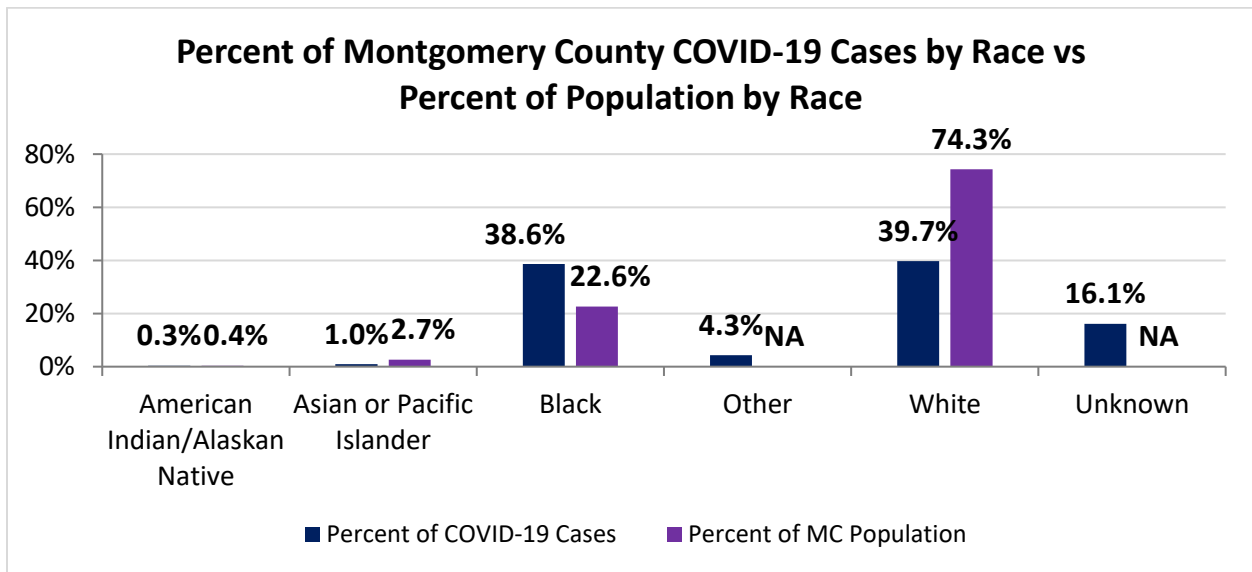
Note. All rates are per 100,000 population.

Montgomery County COVID-19 Cases by Race As of 8/16/20				
Race	Count	Percent	Case Rate	Rate Interpretation**
American Indian/Alaskan Native (AI/AN)*	16	0.3%	744.9	1 in 134
Asian	45	1.0%	316.3	1 in 316
Black	1,802	38.6%	1,497.2	1 in 66
Other	200	4.3%	NA	NA
White	1,853	39.7%	468.4	1 in 213
Unknown	752	16.1%	NA	NA
Total	4,668	100%	876.9	1 in 114

*Note. AI/ANs account for 0.4% of Montgomery County's population, and therefore, rates for this population will be large and may be misleading.

**Rate interpretation represents the number of cases for the given population.

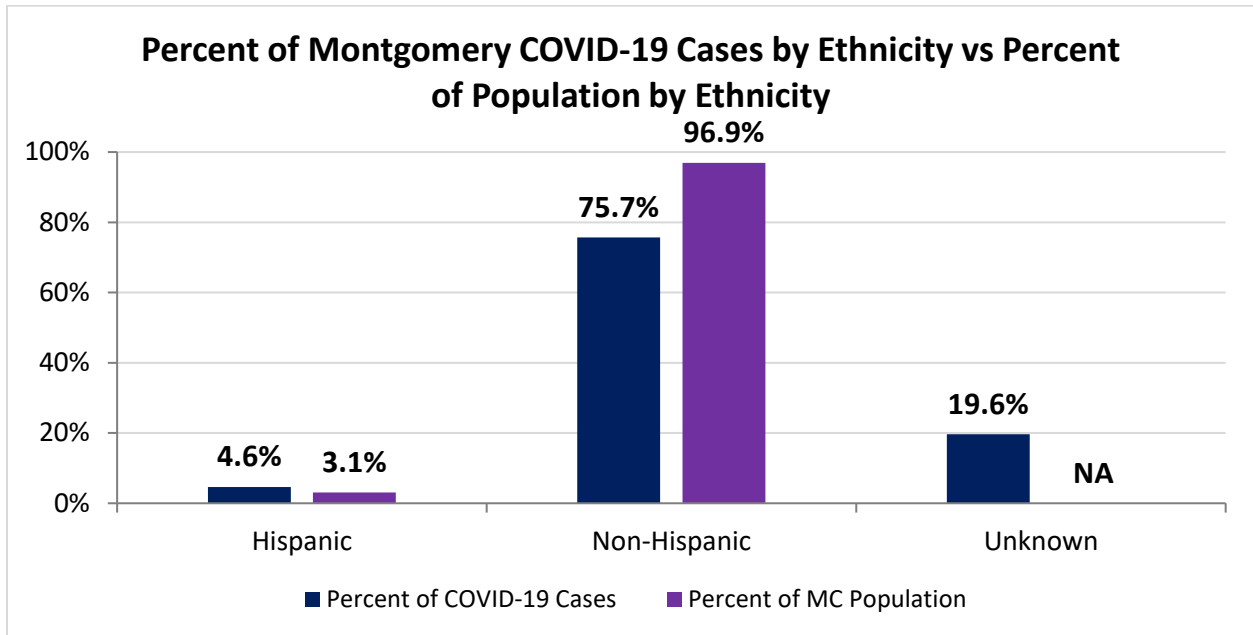
Example - there is a total of 1 case for every 118 Montgomery County residents.



Montgomery County COVID-19 Deaths by Race as of 8/16/2020		
Race	Count	Death Rate
American Indian/Alaskan Native	1	46.6
Asian or Pacific Islander	2	14.1
Black	41	34.1
Other	1	NA
White	60	15.2
Unknown	1	NA
Total	106	19.9

Montgomery County COVID-19 Cases by Ethnicity As of 8/16/20				
Ethnicity	Count	Percent	Case Rate	Rate Interpretation**
Hispanic	217	4.6%	1,318.3	1 in 79
Non-Hispanic	3,534	75.7%	685.1	1 in 146
Unknown	917	19.6%	NA	NA
Total	4,668	100%	876.9	1 in 114

**Rate interpretation represents the number of cases for the given population.
 Example - there is a total of 1 case for every 118 Montgomery County residents.

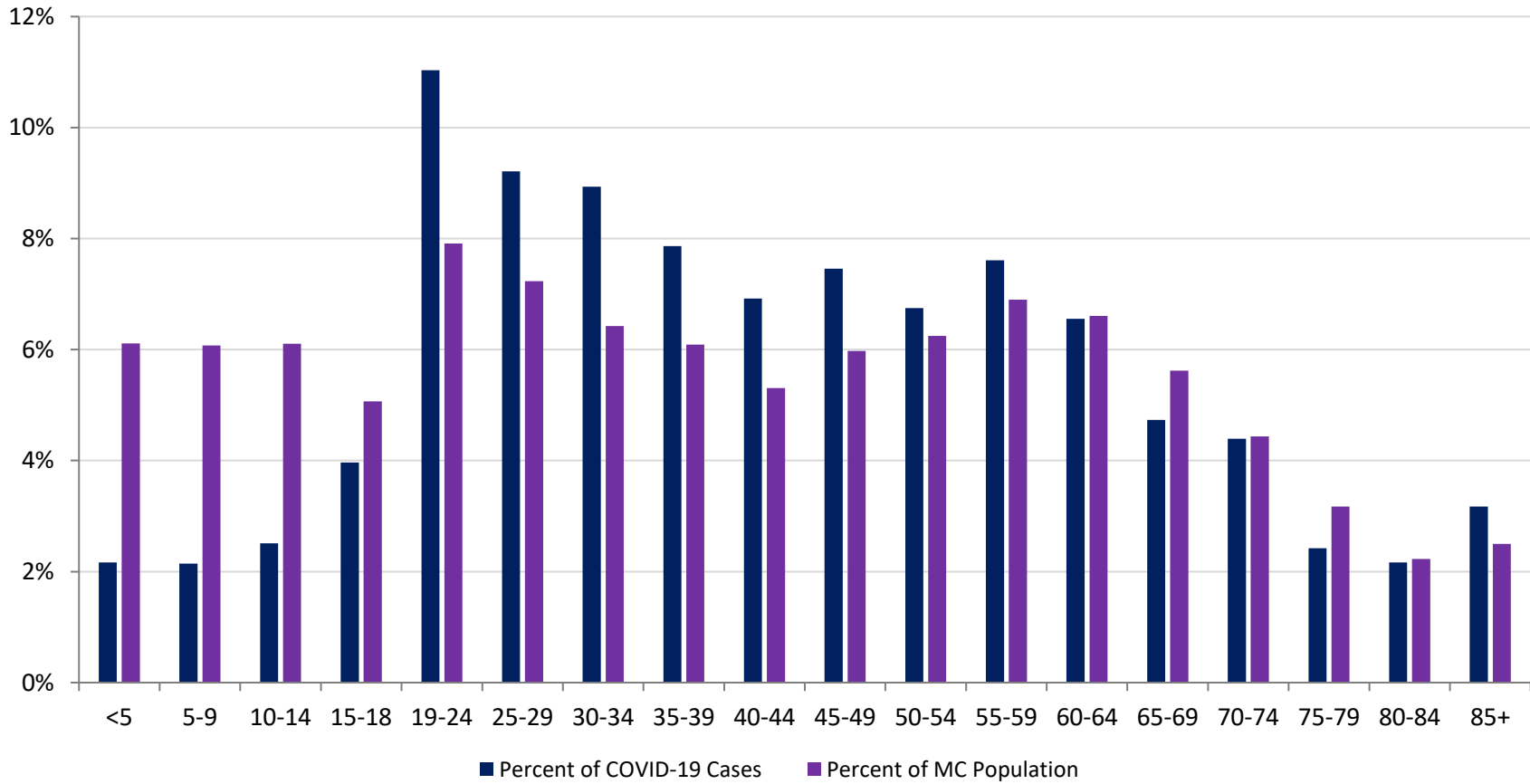


Montgomery County COVID-19 Cases by Health Care Worker Status As of 8/16/20		
Status	#	%
Health Care Worker	493	10.6%
Non-Health Care Worker	2,556	54.8%
Unknown	1,619	34.7%
Total	4,668	100%

Montgomery County COVID-19 Cases Age Range As of 8/16/20	
Stat	Age in Years
Age Range	<1 - 104
Average Age	43.0
Median Age	41.0

Montgomery County COVID-19 Cases by Age Group As of 8/16/20				
Age Group	# Cases	Case Rate	Percent of COVID-19 Cases	Percent of MC Population
<5	101	310.6	2.2%	6.1%
5-9	100	309.3	2.1%	6.1%
10-14	117	359.9	2.5%	6.1%
15-18	185	686.2	4.0%	5.1%
19-24	515	1,222.5	11.0%	7.9%
25-29	430	1,117.1	9.2%	7.2%
30-34	417	1,219.0	8.9%	6.4%
35-39	367	1,132.4	7.9%	6.1%
40-44	323	1,143.2	6.9%	5.3%
45-49	348	1,094.4	7.5%	6.0%
50-54	315	947.3	6.7%	6.2%
55-59	355	966.6	7.6%	6.9%
60-64	306	870.2	6.6%	6.6%
65-69	221	738.5	4.7%	5.6%
70-74	205	868.3	4.4%	4.4%
75-79	113	669.6	2.4%	3.2%
80-84	101	851.8	2.2%	2.2%
85+	148	1,111.4	3.2%	2.5%
Unknown	1	NA	0.0%	0.0%
Total	4,668	876.7	100%	100%

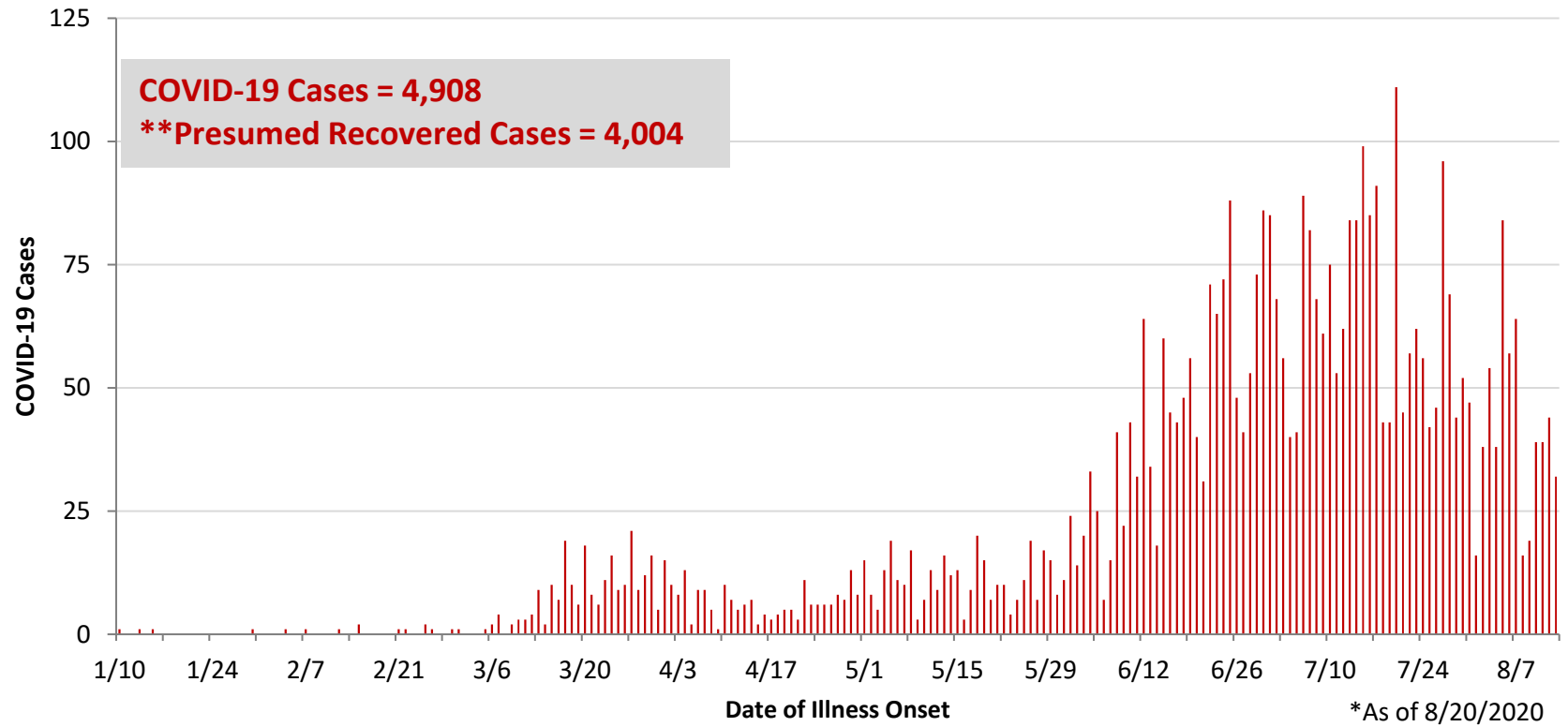
Percent of Montgomery County COVID-19 Cases by Age Group vs Percent of Population by Age Group



PRELIMINARY Montgomery County COVID-19 Cases by Age Group – Cases before 6/1 and June Cases vs July Cases As of 8/16/2020 (% change from June to July)

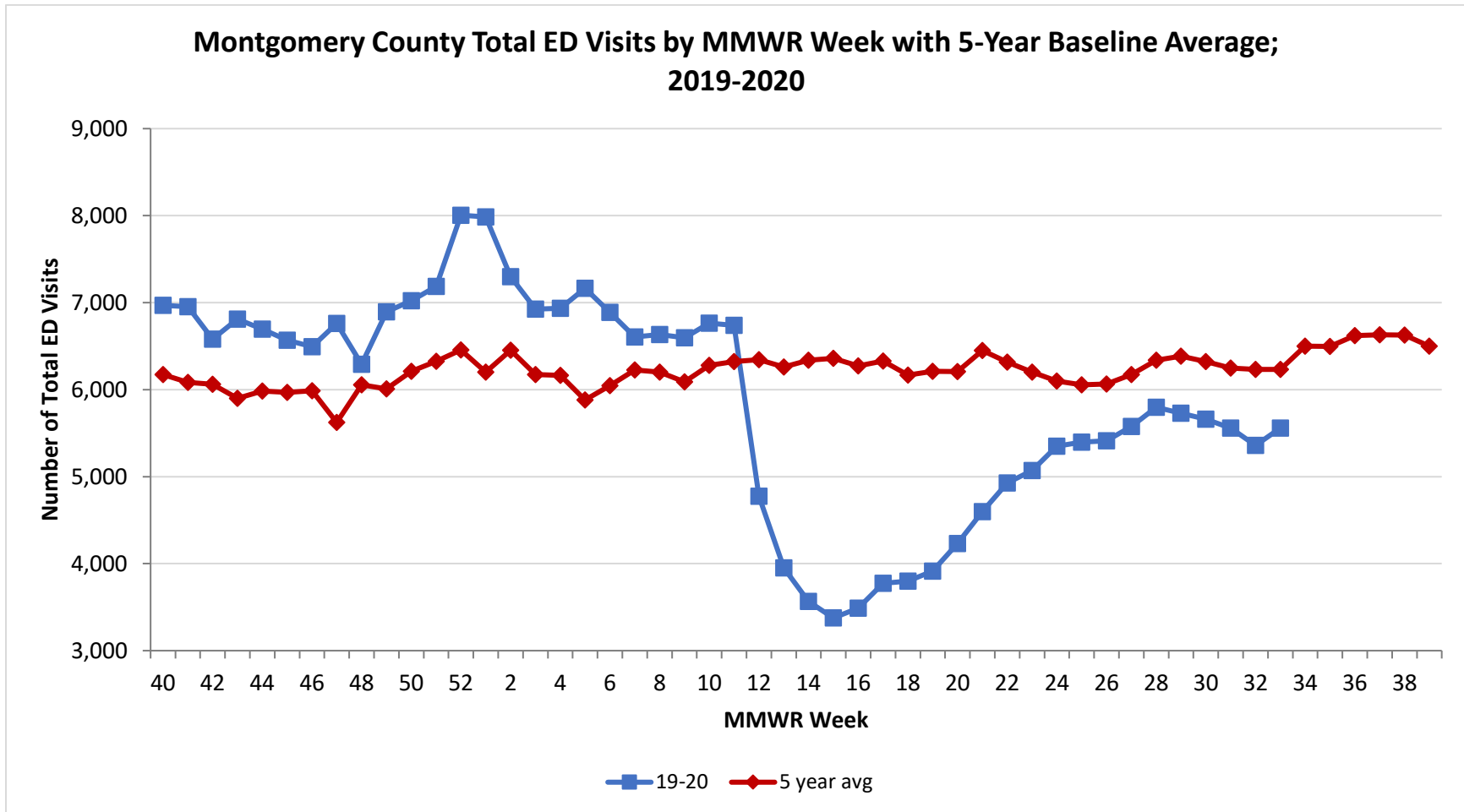
Age Group	# Cases <6/1	% of Cases <6/1	Case Rate <6/1	# Cases June	% of Cases June	Case Rate June	# Cases July	% of Cases July	Case Rate July	% Change # of Cases
<5	12	1.5%	36.9	39	3.0%	119.9	42	2.1%	129.2	7.7%
5-9	7	0.9%	21.7	30	2.3%	92.8	49	2.4%	151.6	63.3%
10-14	9	1.1%	27.7	29	2.2%	89.2	56	2.7%	172.3	93.1%
15-18	16	2.0%	59.3	60	4.6%	222.5	87	4.3%	322.7	45.0%
19-24	58	7.4%	137.7	153	11.7%	363.2	238	11.6%	565.0	55.6%
25-29	52	6.6%	135.1	148	11.3%	384.5	187	9.1%	485.8	26.4%
30-34	66	8.4%	192.9	133	10.1%	388.8	175	8.6%	511.6	31.6%
35-39	64	8.1%	197.5	124	9.5%	382.6	161	7.9%	496.8	29.8%
40-44	61	7.8%	215.9	83	6.3%	293.8	145	7.1%	513.2	74.7%
45-49	70	8.9%	220.1	94	7.2%	295.6	135	6.6%	424.5	43.6%
50-54	75	9.5%	225.5	75	5.7%	225.5	133	6.5%	400.0	77.3%
55-59	91	11.6%	247.8	78	5.9%	212.4	146	7.1%	397.5	87.2%
60-64	67	8.5%	190.5	68	5.2%	193.4	139	6.8%	395.3	104.4%
65-69	54	6.9%	180.5	46	3.5%	153.7	99	4.8%	330.8	115.2%
70-74	43	5.5%	182.1	45	3.4%	190.6	90	4.4%	381.2	100.0%
75-79	16	2.0%	94.8	34	2.6%	201.5	53	2.6%	314.1	55.9%
80-84	14	1.8%	118.1	29	2.2%	244.6	45	2.2%	379.5	55.2%
85+	12	1.5%	90.1	43	3.3%	322.9	65	3.2%	488.1	51.2%
Total	787	100.0%	147.8	1,311	100%	246.3	2,045	100%	384.2	56.0%

**PRELIMINARY COVID-19 Cases by Date of Illness Onset
Montgomery County, 1/10/20 - 8/20/20***

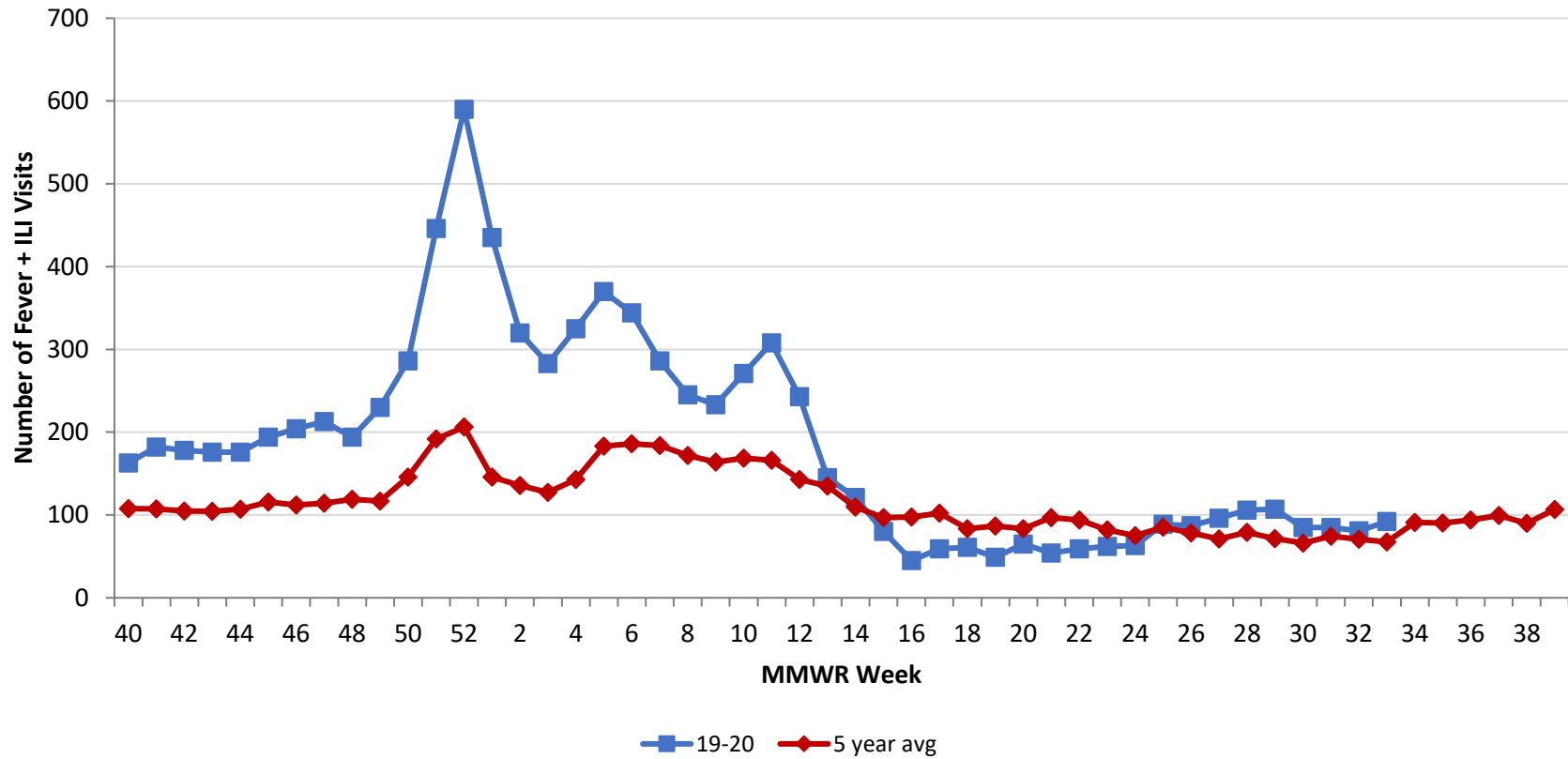


**Presumed recovered is defined as cases with a symptom onset date >21 days prior who are not deceased.

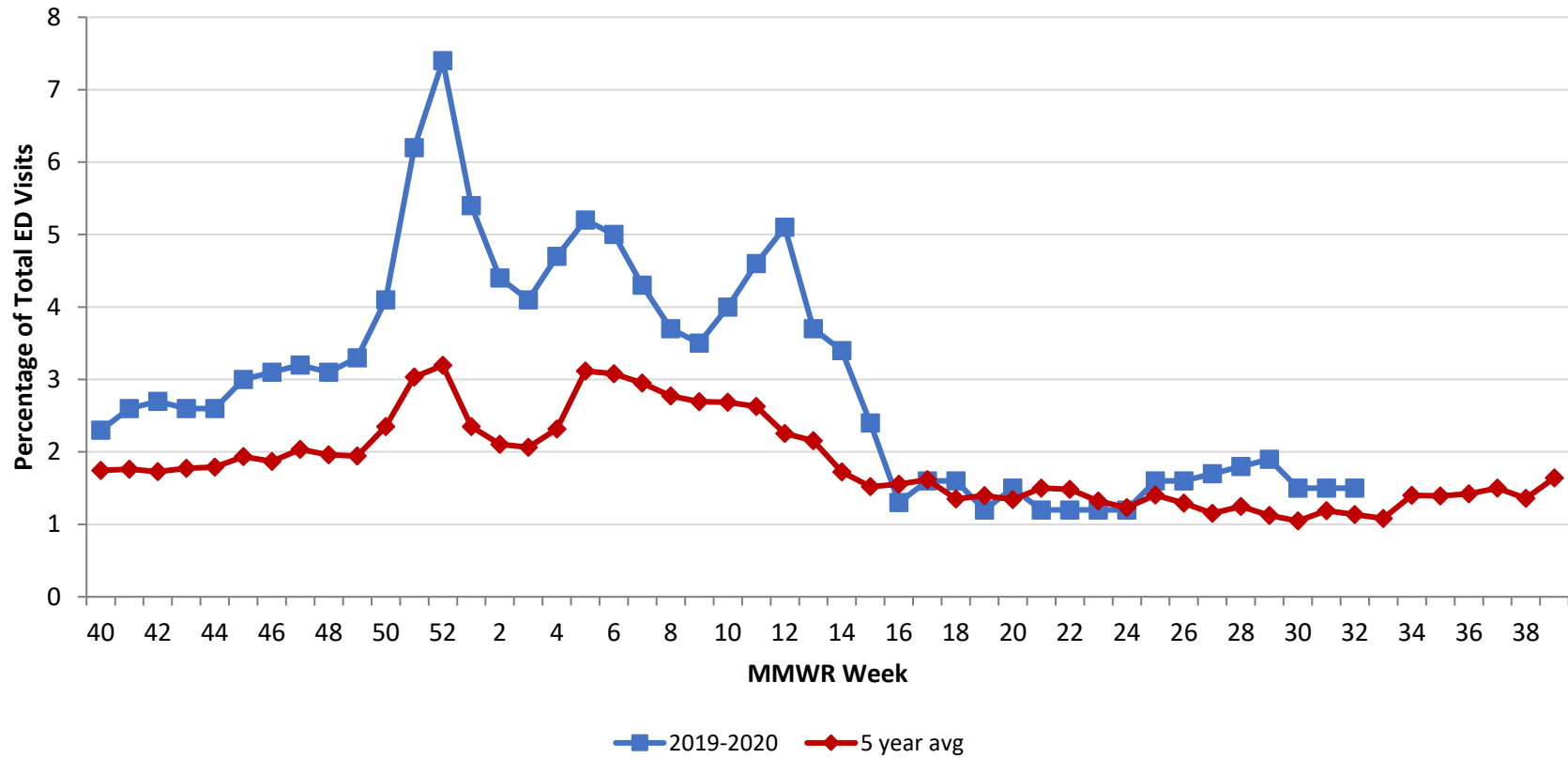
Source: EpiCenter Syndromic Surveillance, Health Monitoring Systems



Montgomery County Fever + ILI Specified ED Visits by MMWR Week with 5-Year Baseline Average; 2019-2020



Montgomery County Fever + ILI Specified ED Visits (% of Total Visits) by MMWR Week with 5-Year Baseline Average; 2019-2020



# Total Visits		
MMWR Week	19-20	5-Year Average
49	6,895	6008.0
50	7,022	6209.8
51	7,185	6324.4
52	8,005	6456.0
1	7,986	6200.8
2	7,297	6452.4
3	6,924	6172.9
4	6,935	6164.0
5	7,164	5881.8
6	6,888	6045.0
7	6,605	6226.8
8	6,633	6200.6
9	6,597	6088.2
10	6,763	6279.6
11	6,738	6321.6
12	4,775	6345.0
13	3,952	6259.8
14	3,565	6337.4
15	3,376	6360.6
16	3,489	6273.4
17	3,774	6327.8
18	3,798	6165.8
19	3,915	6209.8
20	4,231	6208.4
21	4,598	6,449.6
22	4,928	6,315.4
23	5,070	6,201.0
24	5,350	6,098.4
25	5,398	6,055.8
26	5,412	6,063.2
27	5,577	6,173.0
28	5,797	6,339.0
29	5,728	6384.6
30	5,661	6,322.0
31	5,557	6,247.2
32	5,359	6232.8
33	5,558	6233.8

# Fever + ILI Visits		
MMWR Week	19-20	5-Year Average
49	230	116.8
50	286	145.8
51	446	191.8
52	590	206.2
1	435	145.8
2	320	135.8
3	283	127.4
4	325	142.8
5	370	183.2
6	344	186.2
7	286	183.8
8	245	171.8
9	233	164.0
10	271	168.6
11	308	166.2
12	243	143.0
13	145	134.8
14	121	109.4
15	80	96.8
16	45	97.6
17	59	102.4
18	61	83.4
19	49	86.8
20	65	83.4
21	54	96.8
22	59	93.8
23	62	82.0
24	63	75.0
25	89	85.2
26	87	78.4
27	96	71.2
28	106	79.2
29	107	71.6
30	85	66.2
31	85	74.2
32	81	70.8
33	92	67.4

% Fever + ILI Visits		
MMWR Week	19-20	5-Year Average
49	3.3	1.9
50	4.1	2.3
51	6.2	3.0
52	7.4	3.2
1	5.4	2.4
2	4.4	2.1
3	4.1	2.1
4	4.7	2.3
5	5.2	3.1
6	5	3.1
7	4.3	3.0
8	3.7	2.8
9	3.5	2.7
10	4	2.7
11	4.6	2.6
12	5.1	2.3
13	3.7	2.2
14	3.4	1.7
15	2.4	1.5
16	1.3	1.6
17	1.6	1.6
18	1.6	1.4
19	1.2	1.4
20	1.5	1.3
21	1.2	1.5
22	1.2	1.5
23	1.2	1.3
24	1.2	1.2
25	1.6	1.4
26	1.6	1.3
27	1.7	1.2
28	1.8	1.2
29	1.9	1.1
30	1.5	1.0
30	1.5	1.2
32	1.5	1.1
33	1.5	1.1

Delete This Page Once Converted to PDF