



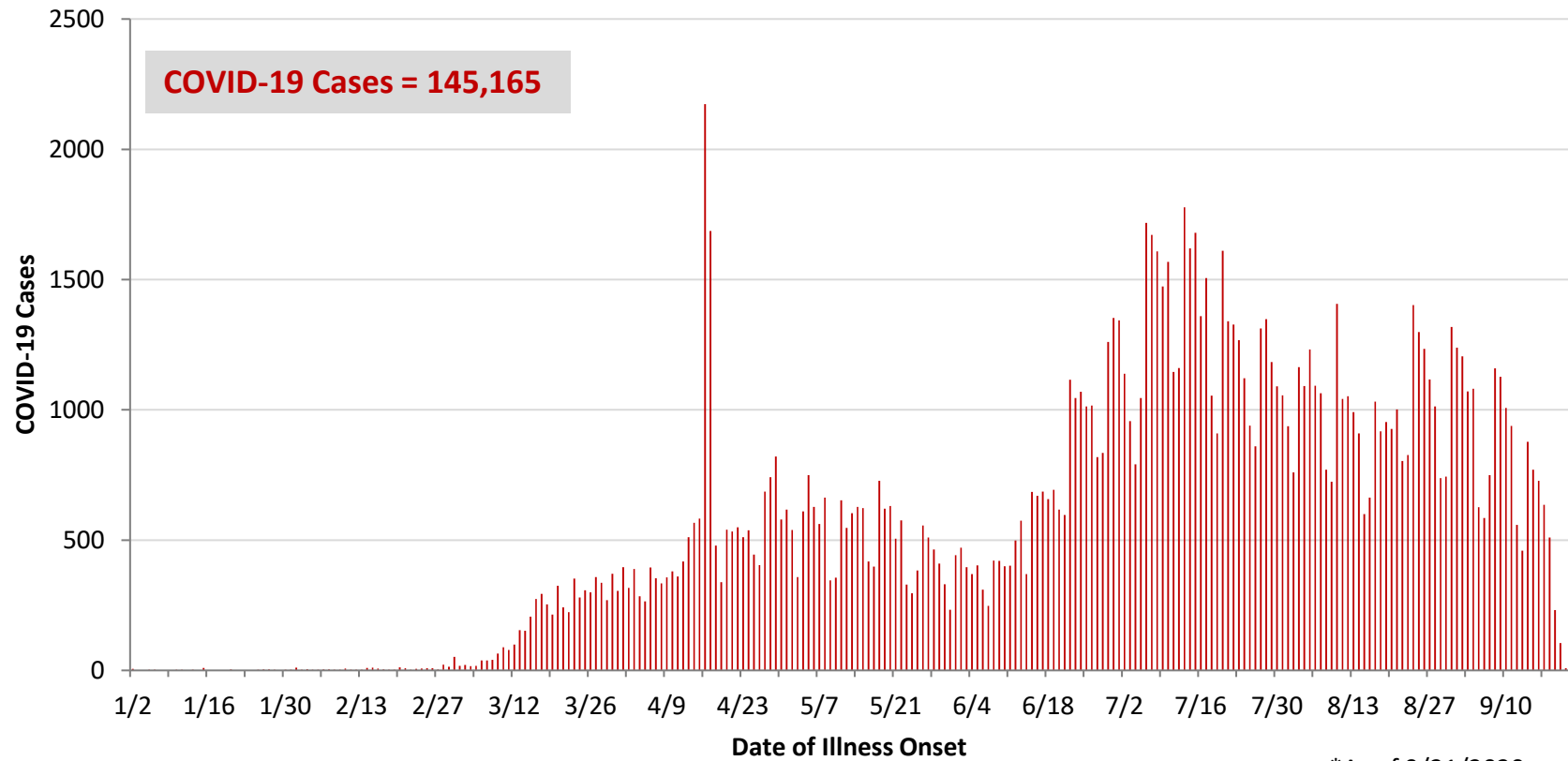
**Ohio, West Central Ohio (WCO), and Montgomery County COVID-19 Cases  
As of 9/21/20**

**Source:** The State of Ohio COVID-19 Dashboard, Ohio Department of Health

**Ohio:**

<b>Preliminary COVID-19 Cases Ohio, As of 9/21/2020</b>		
<b>Sex</b>	<b># Cases</b>	<b>% Cases</b>
Female	75,683	52%
Male	68,360	47%
Unknown	1,122	1%
<b>Total</b>	<b>145,165</b>	<b>100%</b>
<b>Age Group</b>		
<b>Age Group</b>	<b># Cases</b>	<b>% Cases</b>
0-19	17,142	12%
20-29	31,539	22%
30-39	22,104	15%
40-49	19,695	14%
50-59	20,479	14%
60-69	15,286	11%
70-79	9,756	7%
80+	9,051	6%
Unknown	113	0%
<b>Total</b>	<b>145,165</b>	<b>100%</b>
<b>Hospitalized</b>		
Hospitalized	14,829	10.2%
<b>Deaths</b>		
Deaths	4,623	3.2%
<b>Age Group</b>		
<b>Age Group</b>	<b>Deaths</b>	<b>% of Deaths</b>
0-19	2	0%
20-29	13	0%
30-39	33	1%
40-49	75	2%
50-59	270	6%
60-69	645	14%
70-79	1,156	25%
80+	2,429	53%
<b>Total</b>	<b>4,623</b>	<b>100%</b>

**PRELIMINARY COVID-19 Cases by Date of Illness Onset  
Ohio, 1/2/20 - 9/21/20\***

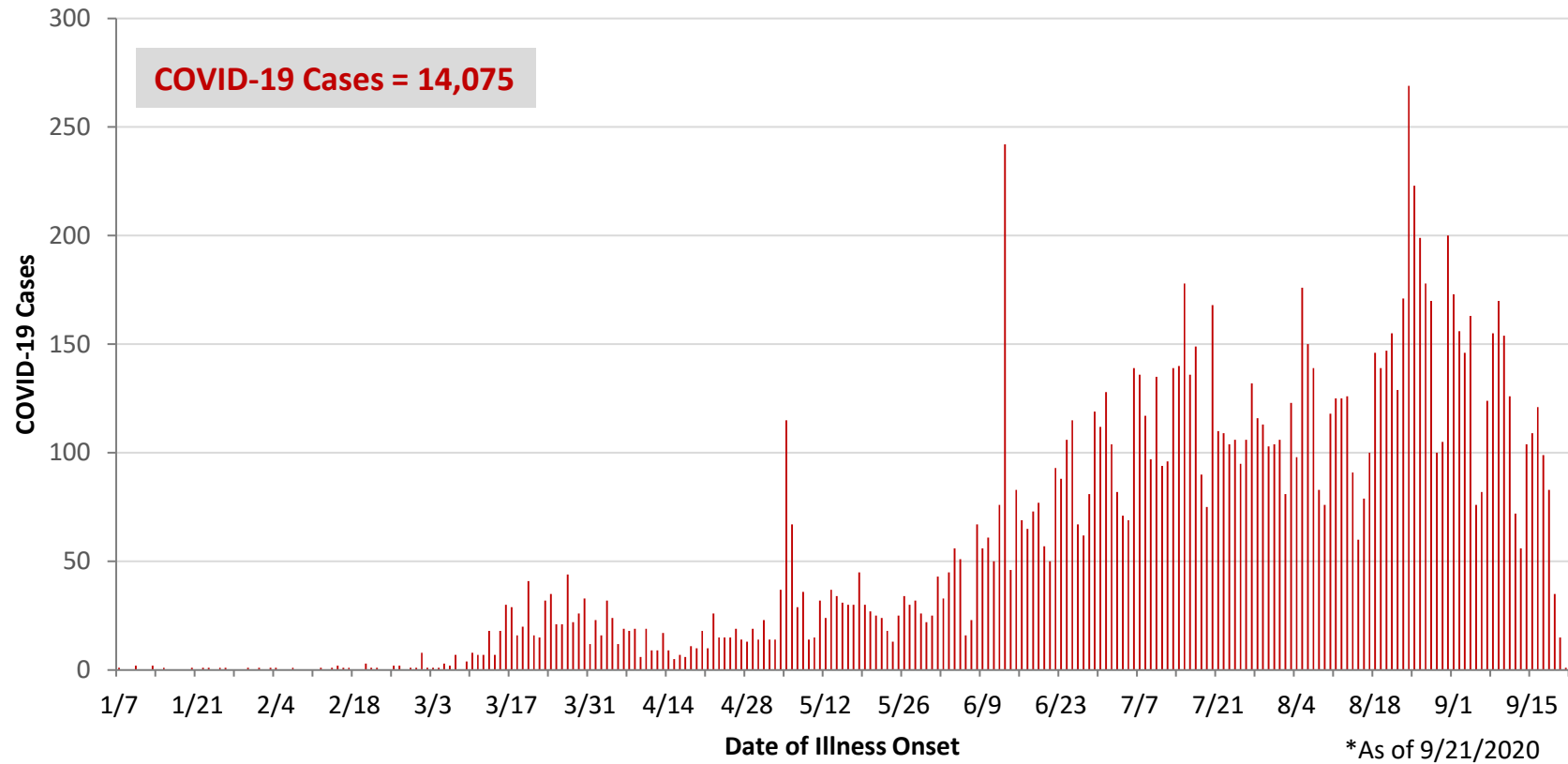


\*As of 9/21/2020

WCO:

Preliminary COVID-19 Cases West Central Ohio, As of 9/21/2020		
County	# Cases	% Cases
Champaign	294	2%
Clark	1,742	12%
Darke	766	5%
Greene	1,367	10%
Miami	1,359	10%
Montgomery	7,540	54%
Preble	420	3%
Shelby	587	4%
<b>Total</b>	<b>14,075</b>	<b>100%</b>
Sex		
Sex	# Cases	% Cases
Female	7,772	55%
Male	6,109	43%
Unknown	194	1%
<b>Total</b>	<b>14,075</b>	<b>100%</b>
Age Group		
Age Group	# Cases	% Cases
0-19	1,983	14%
20-29	3,150	22%
30-39	1,914	14%
40-49	1,717	12%
50-59	1,904	14%
60-69	1,458	10%
70-79	1,057	8%
80+	892	6%
<b>Total</b>	<b>14,075</b>	<b>100%</b>
Hospitalized	1,471	10.5%
Deaths	331	2.4%
Age Group		
Age Group	Deaths	% of Deaths
0-19	1	0%
20-29	3	1%
30-39	4	1%
40-49	6	2%
50-59	18	5%
60-69	47	14%
70-79	75	23%
80+	177	53%
<b>Total</b>	<b>331</b>	<b>100%</b>

**PRELIMINARY COVID-19 Cases by Date of Illness Onset  
West Central Ohio, 1/7/20 - 9/21/20\***



**Montgomery County:**

<b>Preliminary COVID-19 Cases Montgomery County, As of 9/21/2020</b>		
<b>Sex</b>	<b># Cases</b>	<b>% Cases</b>
Female	4,248	56%
Male	3,223	43%
Unknown	69	1%
<b>Total</b>	<b>7,540</b>	<b>100%</b>
<b>Age Group</b>		
<b>Age Group</b>	<b># Cases</b>	<b>% Cases</b>
0-19	1,248	17%
20-29	1,872	25%
30-39	1,003	13%
40-49	899	12%
50-59	934	12%
60-69	711	9%
70-79	494	7%
80+	378	5%
Unknown	1	0%
<b>Total</b>	<b>7,540</b>	<b>100%</b>
<b>Hospitalized</b>		
Hospitalized	885	11.7%
<b>Deaths</b>		
Deaths	152	2.0%
<b>Age Group</b>		
<b>Age Group</b>	<b>Deaths</b>	<b>% of Deaths</b>
0-19	1	1%
20-29	3	2%
30-39	3	2%
40-49	6	4%
50-59	11	7%
60-69	27	18%
70-79	39	26%
80+	62	41%
<b>Total</b>	<b>152</b>	<b>100%</b>

<b>Age Group</b>	<b>Hospitalizations</b>	<b>% of Age Group Cases</b>
0-19	33	2.6%
20-29	48	2.6%
30-39	76	7.6%
40-49	91	10.1%
50-59	153	16.4%
60-69	179	25.2%
70-79	180	36.4%
80+	125	33.1%
<b>Total</b>	<b>885</b>	<b>11.7%</b>

Source: Ohio Disease Reporting System, ODH

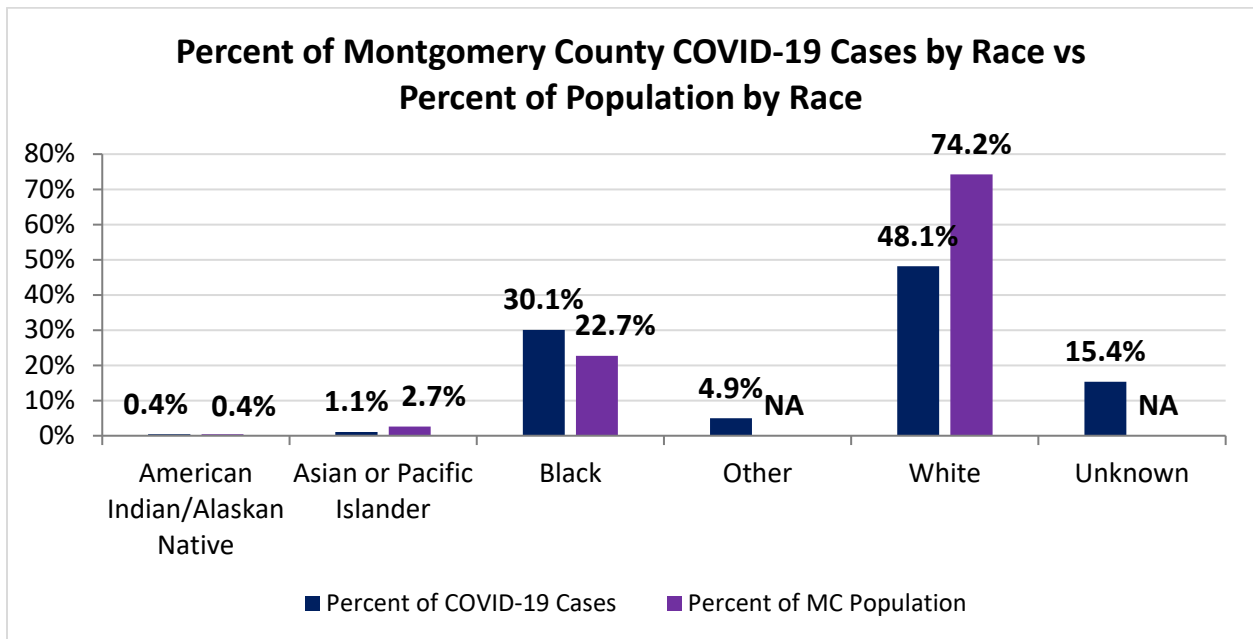
Note. All rates are per 100,000 population.

Montgomery County COVID-19 Cases by Race As of 9/21/20				
Race	Count	Percent	Case Rate	Rate Interpretation**
American Indian/Alaskan Native (AI/AN)*	30	0.4%	1,402.5	1 in 71
Asian	80	1.1%	567.5	1 in 176
Black	2,235	30.1%	1,848.5	1 in 54
Other	367	4.9%	NA	NA
White	3,575	48.1%	906.1	1 in 110
Unknown	1,142	15.4%	NA	NA
<b>Total</b>	<b>7,429</b>	<b>100%</b>	<b>1,397.3</b>	<b>1 in 72</b>

\*Note. AI/ANs account for 0.4% of Montgomery County's population, and therefore, rates for this population will be large and may be misleading.

\*\*Rate interpretation represents the number of cases for the given population.

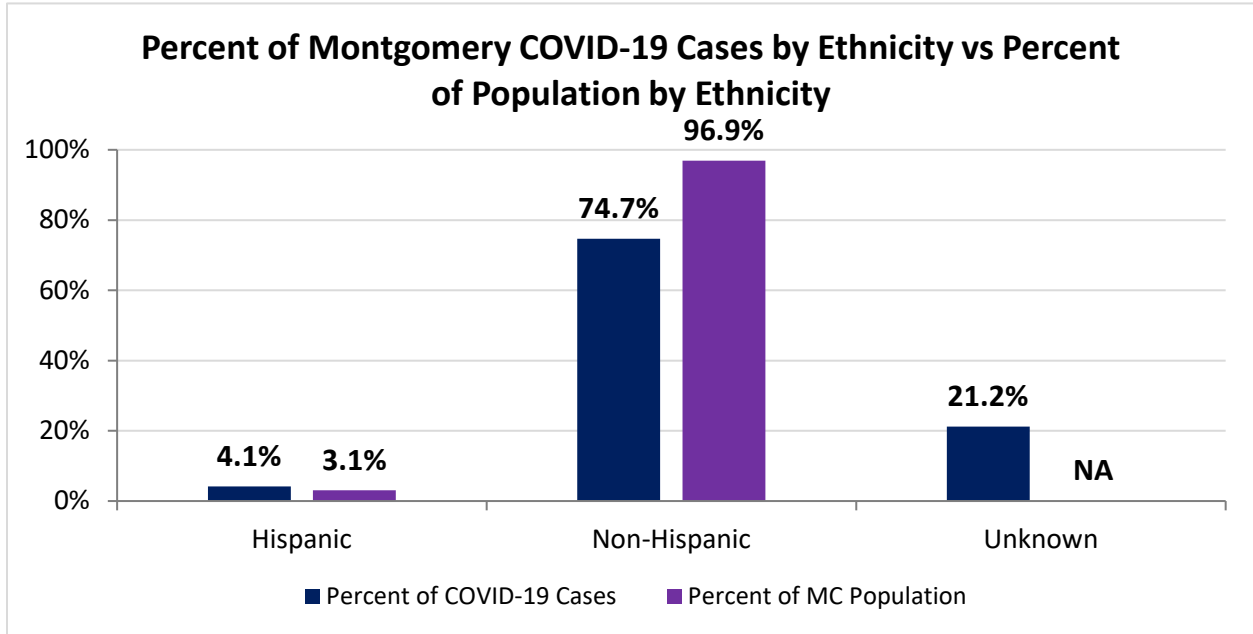
Example - there is a total of 1 case for every 72 Montgomery County residents.



Montgomery County COVID-19 Deaths by Race as of 9/21/2020		
Race	Count	Death Rate
American Indian/Alaskan Native	1	46.8
Asian or Pacific Islander	4	28.4
Black	56	46.3
Other	1	NA
White	87	22.1
Unknown	0	NA
<b>Total</b>	<b>149</b>	<b>28.0</b>

<b>Montgomery County COVID-19 Cases by Ethnicity As of 9/21/20</b>				
<b>Ethnicity</b>	<b>Count</b>	<b>Percent</b>	<b>Case Rate</b>	<b>Rate Interpretation**</b>
Hispanic	307	4.1%	1,865.1	1 in 54
Non-Hispanic	5,550	74.7%	1,075.9	1 in 93
Unknown	1,572	21.2%	NA	NA
<b>Total</b>	<b>7,429</b>	<b>100%</b>	<b>1,395.6</b>	<b>1 in 72</b>

\*\*Rate interpretation represents the number of cases for the given population.  
 Example - there is a total of 1 case for every 72 Montgomery County residents.



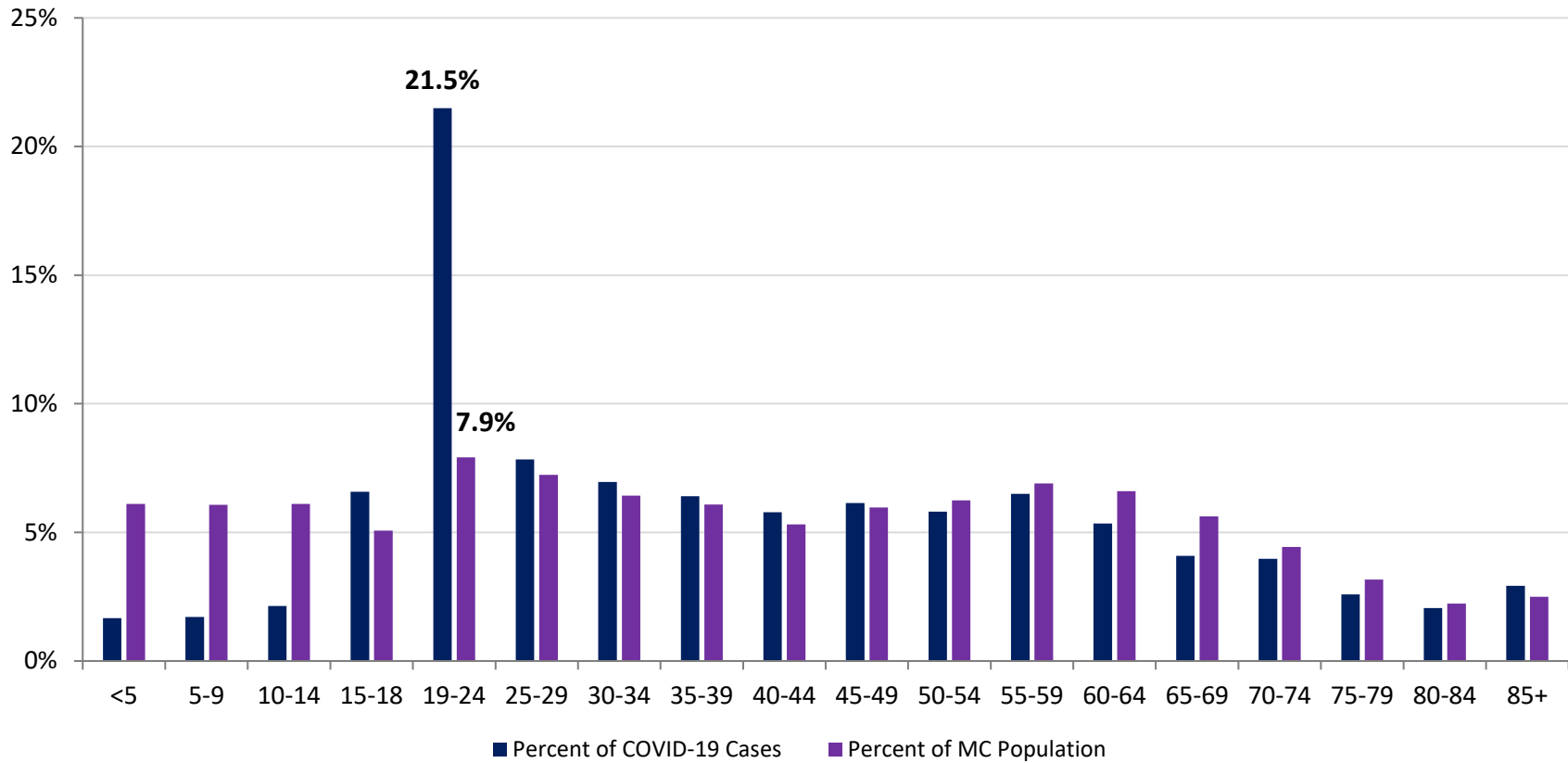
<b>Montgomery County COVID-19 Cases by Health Care Worker Status As of 9/21/20</b>		
<b>Status</b>	<b>#</b>	<b>%</b>
Health Care Worker	691	9.3%
Non-Health Care Worker	4,285	57.7%
Unknown	2,453	33.0%
<b>Total</b>	<b>7,429</b>	<b>100%</b>

<b>Montgomery County COVID-19 Cases Age Range As of 9/21/20</b>	
<b>Stat</b>	<b>Age in Years</b>
Age Range	<1 - 104
Average Age	40.0
Median Age	36.0

<b>Montgomery County COVID-19 Cases by Age Group As of 9/21/20</b>				
<b>Age Group</b>	<b># Cases</b>	<b>Case Rate</b>	<b>Percent of COVID-19 Cases</b>	<b>Percent of MC Population</b>
<5	124	380.1	1.7%	6.1%
5-9	127	394.5	1.7%	6.1%
10-14	159	495.4	2.1%	6.1%
15-18	489	1,851.4	6.6%	5.1%
19-24	1596	3,791.9	21.5%	7.9%
25-29	582	1,517.4	7.8%	7.2%
30-34	517	1,478.8	7.0%	6.4%
35-39	476	1,474.6	6.4%	6.1%
40-44	430	1,496.3	5.8%	5.3%
45-49	456	1,488.3	6.1%	6.0%
50-54	431	1,335.0	5.8%	6.2%
55-59	483	1,333.0	6.5%	6.9%
60-64	397	1,123.0	5.3%	6.6%
65-69	304	1,005.9	4.1%	5.6%
70-74	295	1,196.0	4.0%	4.4%
75-79	192	1,116.9	2.6%	3.2%
80-84	153	1,277.2	2.1%	2.2%
85+	217	1,622.2	2.9%	2.5%
<b>Total</b>	<b>7,428</b>	<b>1,397.1</b>	<b>100%</b>	<b>100%</b>



Percent of Montgomery County COVID-19 Cases by Age Group vs Percent of Population by Age Group

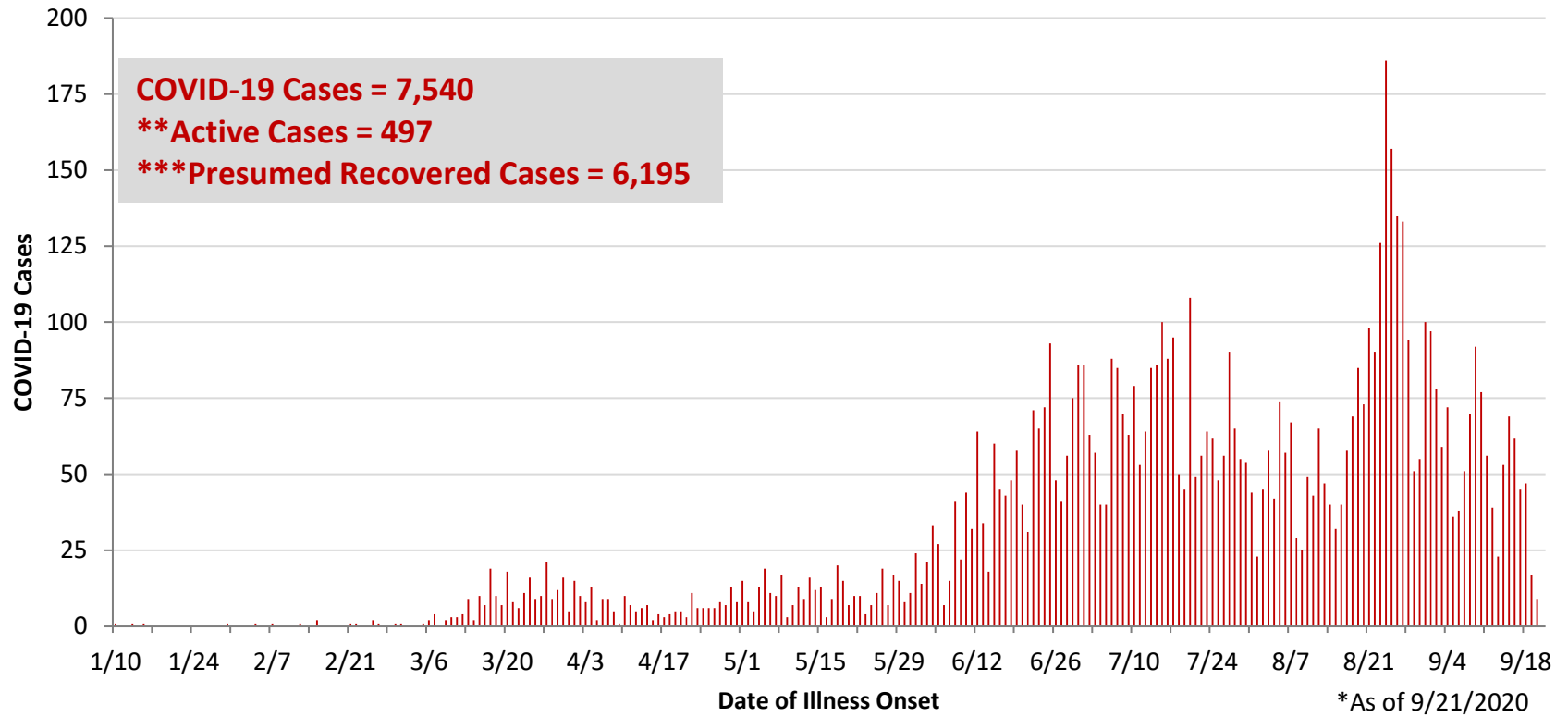


**PRELIMINARY Montgomery County COVID-19 Cases by Age Group – Cases before 6/1 and June Cases vs July Cases As of 9/21/2020 (% change from June to July)**

<b>Age Group</b>	<b># Cases &lt;6/1</b>	<b>% of Cases &lt;6/1</b>	<b>Case Rate &lt;6/1</b>	<b># Cases June</b>	<b>% of Cases June</b>	<b>Case Rate June</b>	<b># Cases July</b>	<b>% of Cases July</b>	<b>Case Rate July</b>	<b>% Change # of Cases</b>
<5	12	1.5%	36.8	39	2.9%	119.6	42	2.0%	128.7	7.7%
5-9	7	0.9%	21.7	30	2.3%	93.2	51	2.5%	158.4	70.0%
10-14	9	1.1%	28.0	29	2.2%	90.4	56	2.7%	174.5	93.1%
15-18	16	2.0%	60.6	60	4.5%	227.2	88	4.2%	333.2	46.7%
19-24	58	7.4%	137.8	156	11.8%	370.6	247	11.9%	586.8	58.3%
25-29	52	6.6%	135.6	150	11.3%	391.1	188	9.0%	490.2	25.3%
30-34	66	8.4%	188.8	134	10.1%	383.3	175	8.4%	500.6	30.6%
35-39	64	8.1%	198.3	124	9.4%	384.1	161	7.7%	498.7	29.8%
40-44	61	7.8%	212.3	84	6.3%	292.3	147	7.1%	511.5	75.0%
45-49	70	8.9%	228.5	95	7.2%	310.1	139	6.7%	453.7	46.3%
50-54	75	9.5%	232.3	75	5.7%	232.3	137	6.6%	424.3	82.7%
55-59	91	11.6%	251.1	80	6.0%	220.8	151	7.3%	416.7	88.8%
60-64	67	8.5%	189.5	69	5.2%	195.2	140	6.7%	396.0	102.9%
65-69	54	6.9%	178.7	47	3.5%	155.5	97	4.7%	321.0	106.4%
70-74	43	5.5%	174.3	45	3.4%	182.4	95	4.6%	385.1	111.1%
75-79	16	2.0%	93.1	35	2.6%	203.6	53	2.5%	308.3	51.4%
80-84	14	1.8%	116.9	29	2.2%	242.1	49	2.4%	409.0	69.0%
85+	12	1.5%	89.7	43	3.2%	321.4	65	3.1%	485.9	51.2%
<b>Total</b>	<b>787</b>	<b>100%</b>	<b>148.0</b>	<b>1,324</b>	<b>100%</b>	<b>249.0</b>	<b>2,081</b>	<b>100%</b>	<b>391.4</b>	<b>57.2%</b>

<b>PRELIMINARY Montgomery County COVID-19 Cases by Age Group –July Cases vs August Cases As of 9/21/2020 (% change from July to August)</b>							
<b>Age Group</b>	<b># Cases July</b>	<b>% of Cases July</b>	<b>Case Rate July</b>	<b># Cases August</b>	<b>% of Cases August</b>	<b>Case Rate August</b>	<b>% Change # of Cases</b>
<5	42	2.0%	128.7	24	1.1%	73.6	-42.9%
5-9	51	2.5%	158.4	28	1.3%	87.0	-45.1%
10-14	56	2.7%	174.5	48	2.1%	149.6	-14.3%
15-18	88	4.2%	333.2	238	10.6%	901.1	170.5%
19-24	247	11.9%	586.8	882	39.4%	2095.5	257.1%
25-29	188	9.0%	490.2	106	4.7%	276.4	-43.6%
30-34	175	8.4%	500.6	86	3.8%	246.0	-50.9%
35-39	161	7.7%	498.7	64	2.9%	198.3	-60.2%
40-44	147	7.1%	511.5	90	4.0%	313.2	-38.8%
45-49	139	6.7%	453.7	105	4.7%	342.7	-24.5%
50-54	137	6.6%	424.3	93	4.2%	288.1	-32.1%
55-59	151	7.3%	416.7	106	4.7%	292.5	-29.8%
60-64	140	6.7%	396.0	84	3.8%	237.6	-40.0%
65-69	97	4.7%	321.0	72	3.2%	238.2	-25.8%
70-74	95	4.6%	385.1	70	3.1%	283.8	-26.3%
75-79	53	2.5%	308.3	55	2.5%	320.0	3.8%
80-84	49	2.4%	409.0	32	1.4%	267.1	-34.7%
85+	65	3.1%	485.9	53	2.4%	396.2	-18.5%
<b>Total</b>	<b>2,081</b>	<b>100%</b>	<b>391.4</b>	<b>2,236</b>	<b>100%</b>	<b>420.5</b>	<b>7.4%</b>

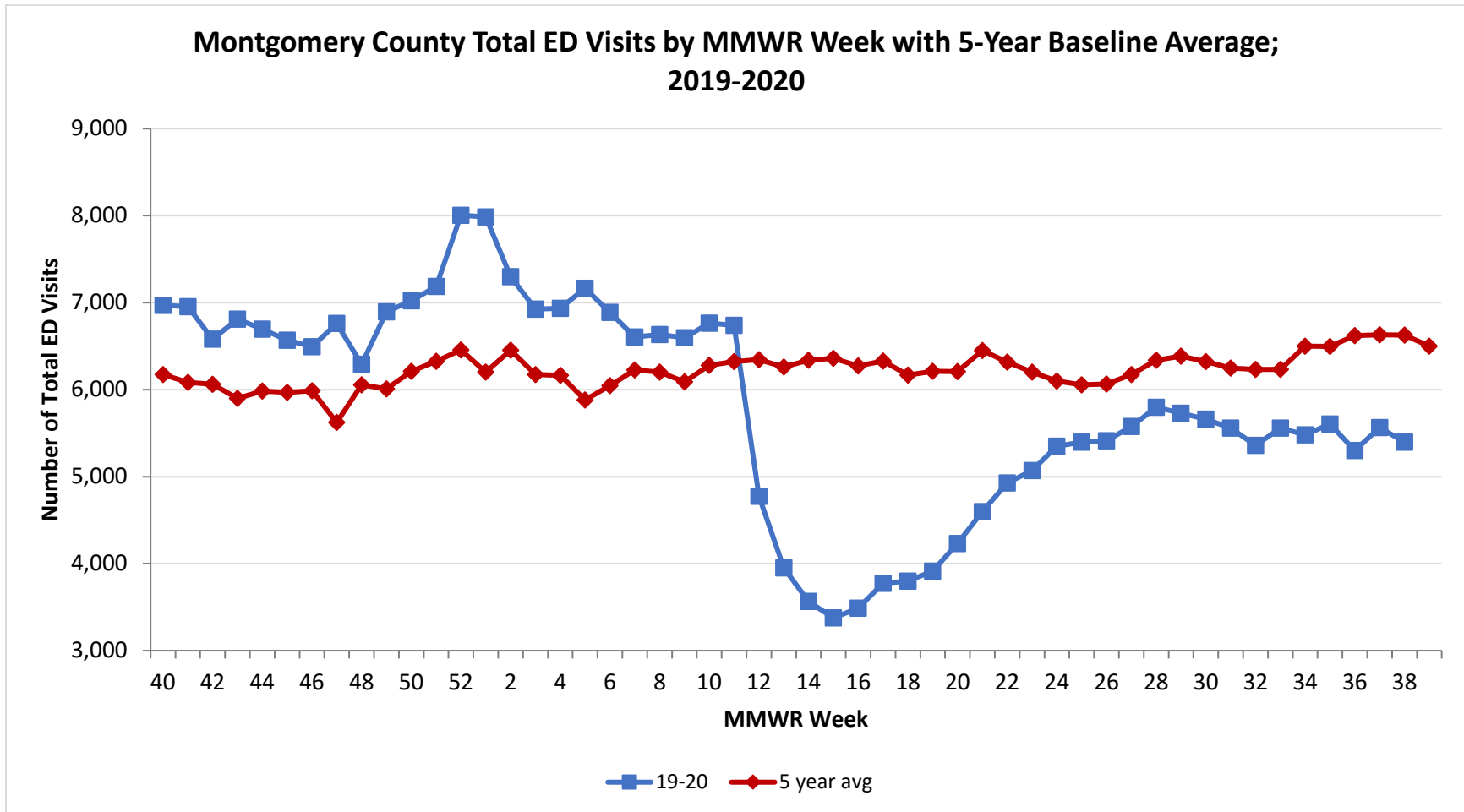
**PRELIMINARY COVID-19 Cases by Date of Illness Onset  
Montgomery County, 1/10/20 - 9/21/20\***



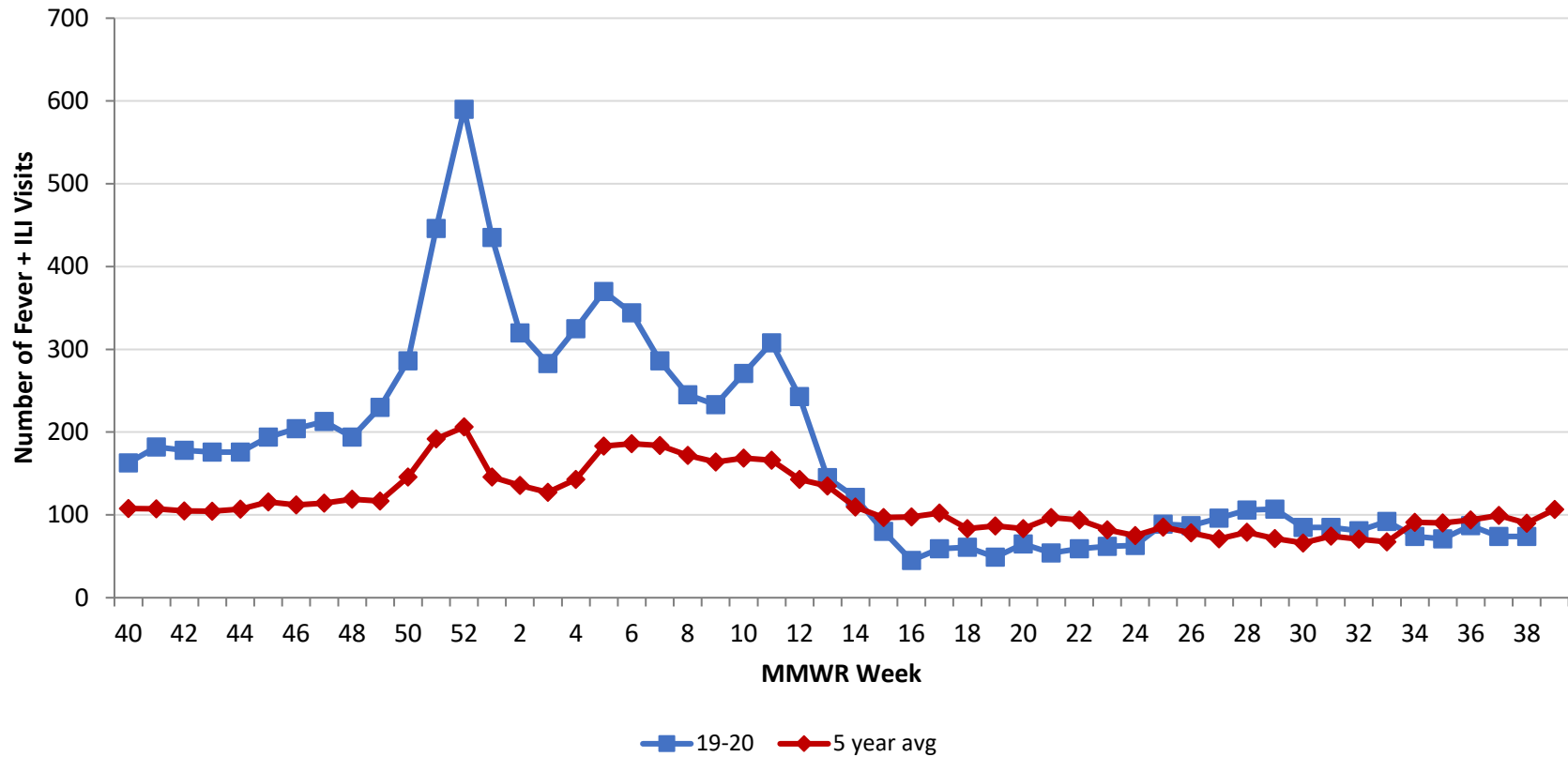
\*\*Active cases are based on the reported illness onset date (using a 10-day window) of reported cases.

\*\*\*Presumed recovered is defined as cases with a symptom onset date >21 days prior who are not deceased.

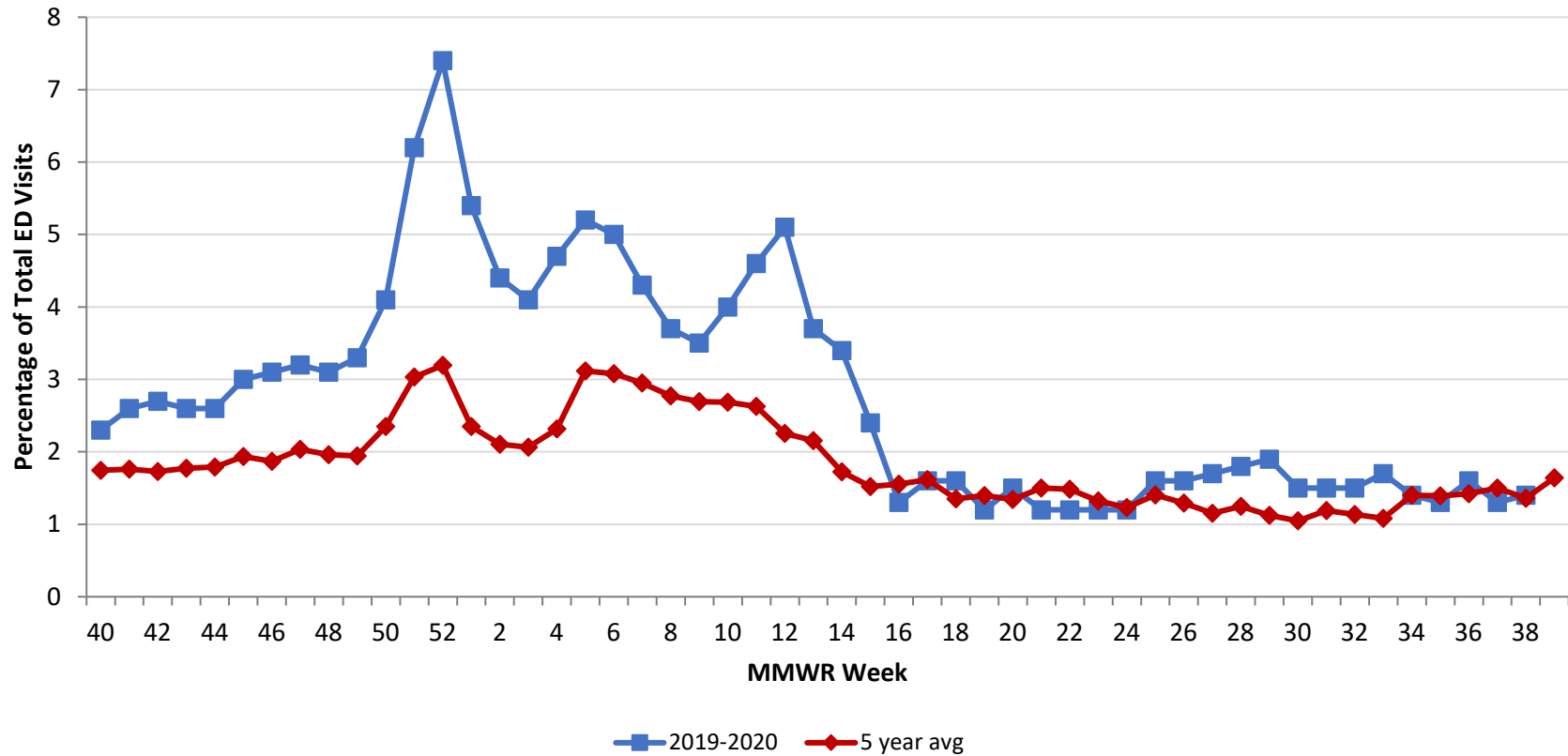
Source: EpiCenter Syndromic Surveillance, Health Monitoring Systems



Montgomery County Fever + ILI Specified ED Visits by MMWR Week with 5-Year Baseline Average; 2019-2020



**Montgomery County Fever + ILI Specified ED Visits (% of Total Visits) by MMWR Week  
with 5-Year Baseline Average; 2019-2020**



# Total Visits		
MMWR Week	19-20	5-Year Average
3	6,924	6172.9
4	6,935	6164.0
5	7,164	5881.8
6	6,888	6045.0
7	6,605	6226.8
8	6,633	6200.6
9	6,597	6088.2
10	6,763	6279.6
11	6,738	6321.6
12	4,775	6345.0
13	3,952	6259.8
14	3,565	6337.4
15	3,376	6360.6
16	3,489	6273.4
17	3,774	6327.8
18	3,798	6165.8
19	3,915	6209.8
20	4,231	6208.4
21	4,598	6,449.6
22	4,928	6,315.4
23	5,070	6,201.0
24	5,350	6,098.4
25	5,398	6,055.8
26	5,412	6,063.2
27	5,577	6,173.0
28	5,797	6,339.0
29	5,728	6384.6
30	5,661	6,322.0
31	5,557	6,247.2
32	5,359	6232.8
33	5,558	6,233.8
34	5,481	6,501.0
35	5,606	6,496.2
36	5,301	6,621.0
37	5,563	6,630.2
38	5,396	6,627.8

# Fever + ILI Visits		
MMWR Week	19-20	5-Year Average
3	283	127.4
4	325	142.8
5	370	183.2
6	344	186.2
7	286	183.8
8	245	171.8
9	233	164.0
10	271	168.6
11	308	166.2
12	243	143.0
13	145	134.8
14	121	109.4
15	80	96.8
16	45	97.6
17	59	102.4
18	61	83.4
19	49	86.8
20	65	83.4
21	54	96.8
22	59	93.8
23	62	82.0
24	63	75.0
25	89	85.2
26	87	78.4
27	96	71.2
28	106	79.2
29	107	71.6
30	85	66.2
31	85	74.2
32	81	70.8
33	92	67.4
34	74	91.0
35	71	90.4
36	87	94.0
37	74	99.4
38	74	90.0

% Fever + ILI Visits		
MMWR Week	19-20	5-Year Average
3	4.1	2.1
4	4.7	2.3
5	5.2	3.1
6	5	3.1
7	4.3	3.0
8	3.7	2.8
9	3.5	2.7
10	4	2.7
11	4.6	2.6
12	5.1	2.3
13	3.7	2.2
14	3.4	1.7
15	2.4	1.5
16	1.3	1.6
17	1.6	1.6
18	1.6	1.4
19	1.2	1.4
20	1.5	1.3
21	1.2	1.5
22	1.2	1.5
23	1.2	1.3
24	1.2	1.2
25	1.6	1.4
26	1.6	1.3
27	1.7	1.2
28	1.8	1.2
29	1.9	1.1
30	1.5	1.0
31	1.5	1.2
32	1.5	1.1
33	1.7	1.1
34	1.4	1.4
35	1.3	1.4
36	1.6	1.4
37	1.3	1.5
38	1.4	1.4