



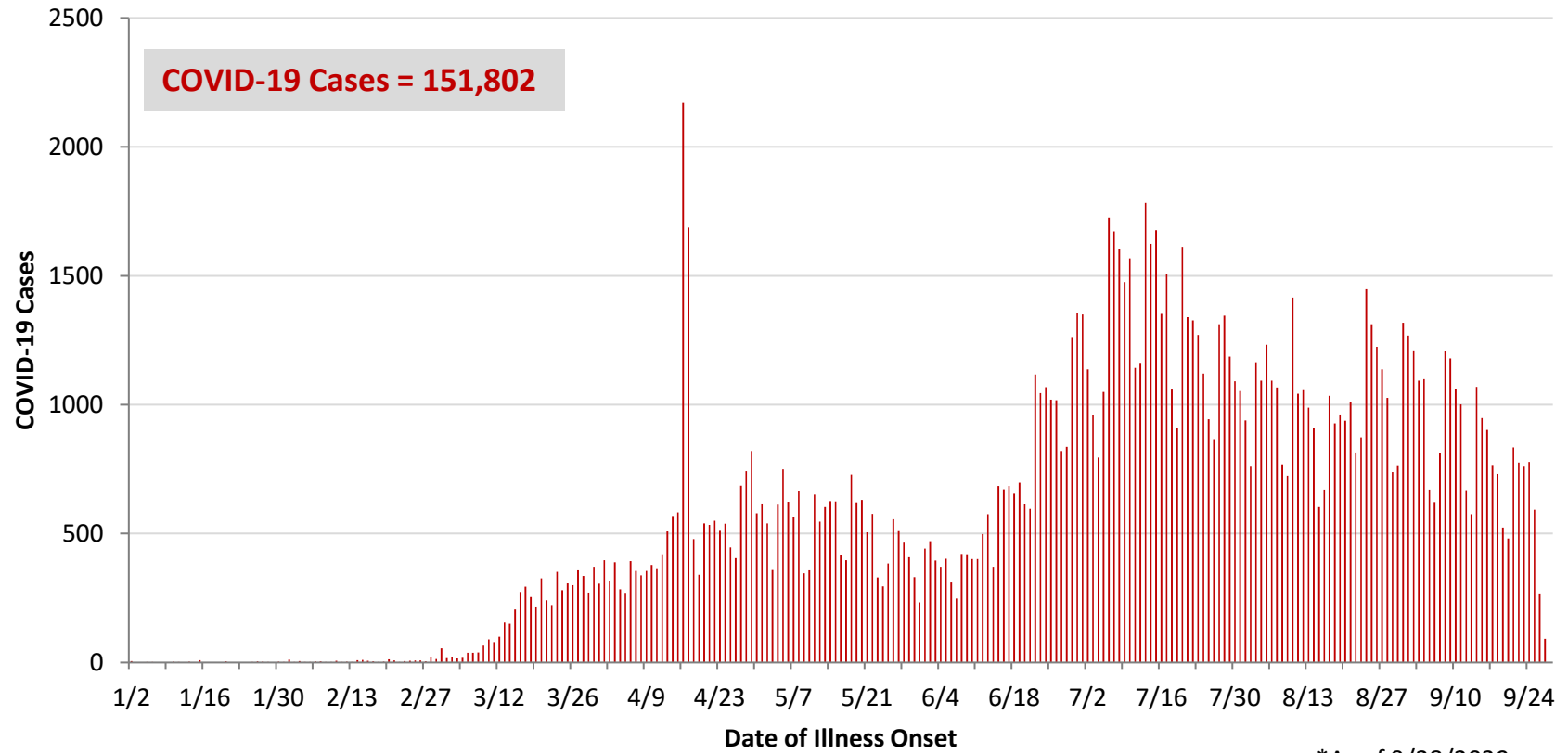
**Ohio, West Central Ohio (WCO), and Montgomery County COVID-19 Cases  
As of 9/28/20**

**Source:** The State of Ohio COVID-19 Dashboard, Ohio Department of Health

**Ohio:**

<b>Preliminary COVID-19 Cases Ohio, As of 9/28/2020</b>		
<b>Sex</b>	<b># Cases</b>	<b>% Cases</b>
Female	79,156	52%
Male	71,471	47%
Unknown	1,175	1%
<b>Total</b>	<b>151,802</b>	<b>100%</b>
<b>Age Group</b>		
<b>Age Group</b>	<b># Cases</b>	<b>% Cases</b>
0-19	18,295	12%
20-29	33,034	22%
30-39	22,966	15%
40-49	20,458	13%
50-59	21,304	14%
60-69	16,001	11%
70-79	10,233	7%
80+	9,398	6%
Unknown	113	0%
<b>Total</b>	<b>151,802</b>	<b>100%</b>
<b>Hospitalized</b>		
Hospitalized	15,307	10.1%
<b>Deaths</b>		
Deaths	4,746	3.1%
<b>Age Group</b>		
<b>Age Group</b>	<b>Deaths</b>	<b>% of Deaths</b>
0-19	2	0%
20-29	13	0%
30-39	35	1%
40-49	80	2%
50-59	276	6%
60-69	660	14%
70-79	1,189	25%
80+	2,491	52%
<b>Total</b>	<b>4,746</b>	<b>100%</b>

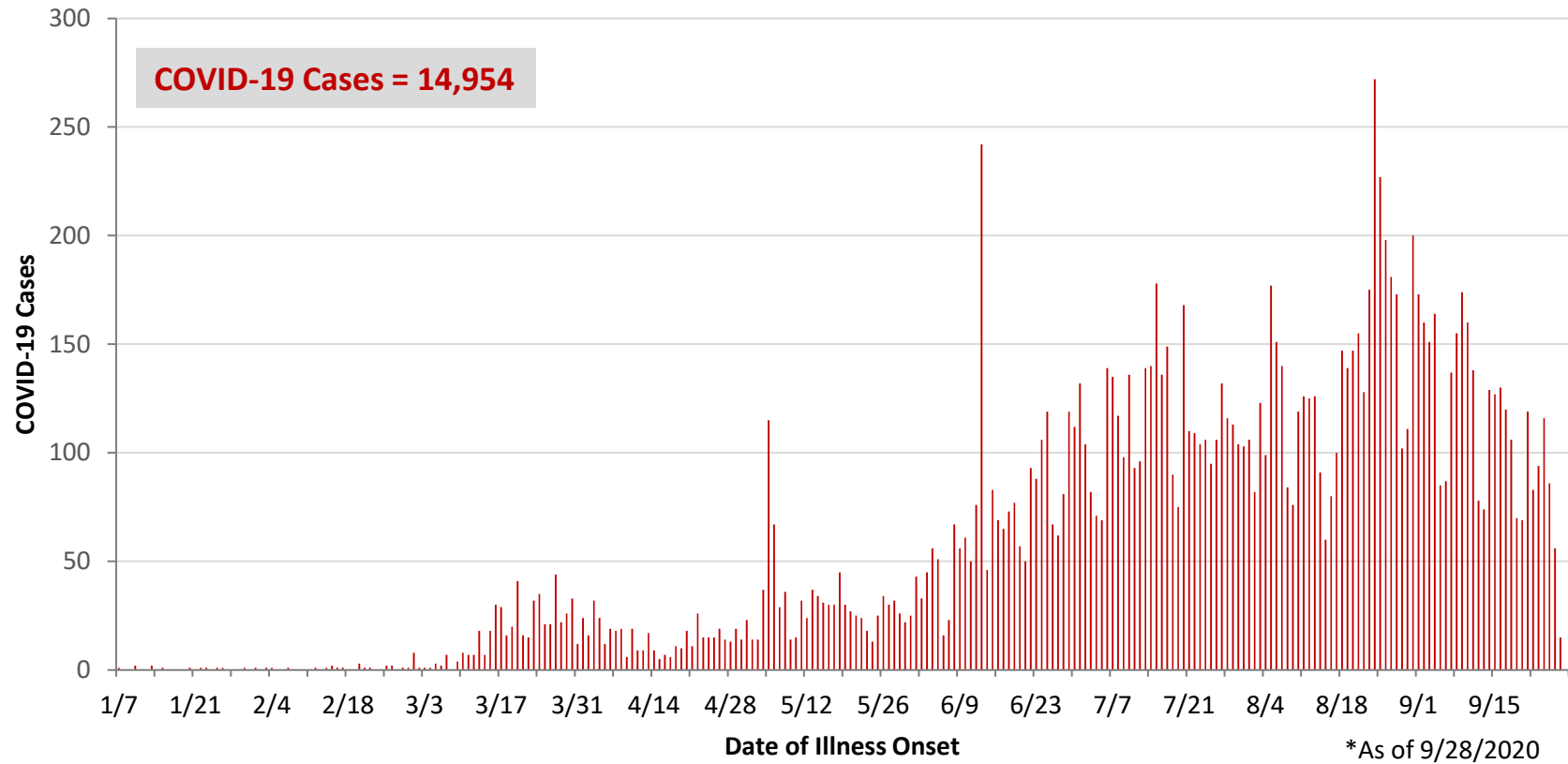
**PRELIMINARY COVID-19 Cases by Date of Illness Onset  
Ohio, 1/2/20 - 9/28/20\***



WCO:

Preliminary COVID-19 Cases West Central Ohio, As of 9/28/2020		
County	# Cases	% Cases
Champaign	313	2%
Clark	1,839	12%
Darke	806	5%
Greene	1,490	10%
Miami	1,463	10%
Montgomery	7,938	53%
Preble	445	3%
Shelby	660	4%
<b>Total</b>	<b>14,954</b>	<b>100%</b>
Sex		
Sex	# Cases	% Cases
Female	8,252	55%
Male	6,497	43%
Unknown	205	1%
<b>Total</b>	<b>14,954</b>	<b>100%</b>
Age Group		
Age Group	# Cases	% Cases
0-19	2,110	14%
20-29	3,294	22%
30-39	2,022	14%
40-49	1,839	12%
50-59	2,013	13%
60-69	1,582	11%
70-79	1,136	8%
80+	958	6%
<b>Total</b>	<b>14,954</b>	<b>100%</b>
Hospitalized	1,555	10.4%
Deaths	360	2.4%
Age Group		
Age Group	Deaths	% of Deaths
0-19	1	0%
20-29	3	1%
30-39	4	1%
40-49	9	3%
50-59	21	6%
60-69	51	14%
70-79	82	23%
80+	189	53%
<b>Total</b>	<b>360</b>	<b>100%</b>

**PRELIMINARY COVID-19 Cases by Date of Illness Onset  
West Central Ohio, 1/7/20 - 9/28/20\***



**Montgomery County:**

<b>Preliminary COVID-19 Cases Montgomery County, As of 9/28/2020</b>		
<b>Sex</b>	<b># Cases</b>	<b>% Cases</b>
Female	4,466	56%
Male	3,406	43%
Unknown	66	1%
<b>Total</b>	<b>7,938</b>	<b>100%</b>
<b>Age Group</b>		
<b>Age Group</b>	<b># Cases</b>	<b>% Cases</b>
0-19	1,310	17%
20-29	1,940	24%
30-39	1,058	13%
40-49	944	12%
50-59	986	12%
60-69	761	10%
70-79	531	7%
80+	406	5%
Unknown	2	0%
<b>Total</b>	<b>7,938</b>	<b>100%</b>
Hospitalized	935	11.8%
Deaths	164	2.1%
<b>Age Group</b>	<b>Deaths</b>	<b>% of Deaths</b>
0-19	1	1%
20-29	3	2%
30-39	3	2%
40-49	7	4%
50-59	13	8%
60-69	28	17%
70-79	41	25%
80+	68	41%
<b>Total</b>	<b>164</b>	<b>100%</b>

<b>Age Group</b>	<b>Hospitalizations</b>	<b>% of Age Group Cases</b>
0-19	34	2.6%
20-29	51	2.6%
30-39	79	7.5%
40-49	93	9.9%
50-59	160	16.2%
60-69	190	25.0%
70-79	193	36.3%
80+	135	33.3%
<b>Total</b>	<b>935</b>	<b>11.8%</b>

Source: Ohio Disease Reporting System, ODH

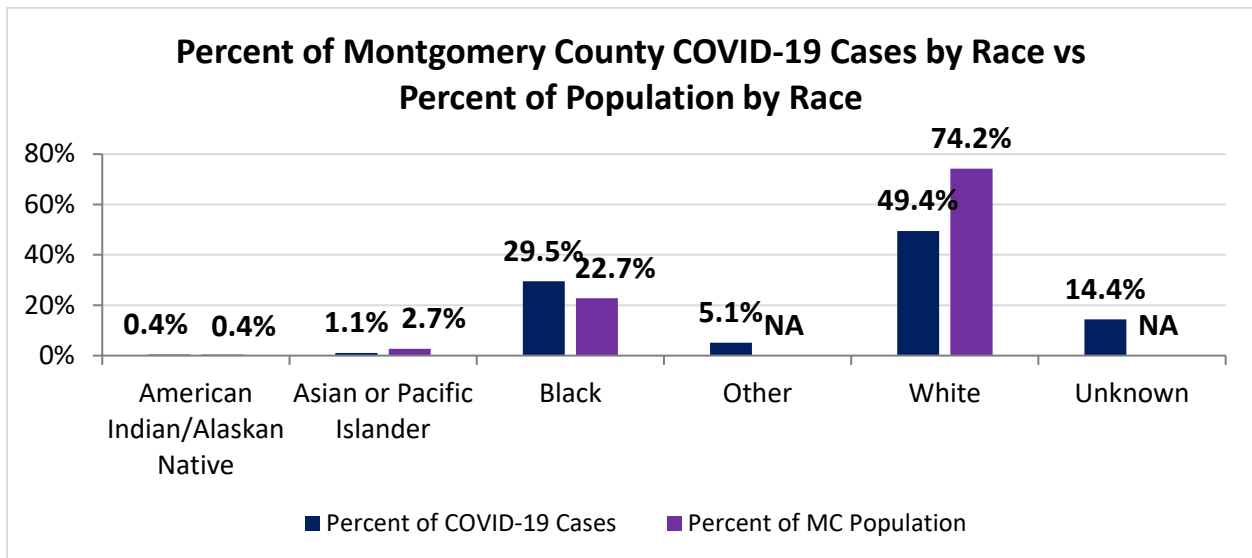
Note. All rates are per 100,000 population.

Montgomery County COVID-19 Cases by Race As of 9/28/20				
Race	Count	Percent	Case Rate	Rate Interpretation**
American Indian/Alaskan Native (AI/AN)*	32	0.4%	1,496.0	1 in 667
Asian	84	1.1%	595.8	1 in 168
Black	2,305	29.5%	1,906.4	1 in 53
Other	401	5.1%	NA	NA
White	3,864	49.4%	979.4	1 in 102
Unknown	1,128	14.4%	NA	NA
<b>Total</b>	<b>7,814</b>	<b>100%</b>	<b>1,469.7</b>	<b>1 in 68</b>

\*Note. AI/ANs account for 0.4% of Montgomery County's population, and therefore, rates for this population will be large and may be misleading.

\*\*Rate interpretation represents the number of cases for the given population.

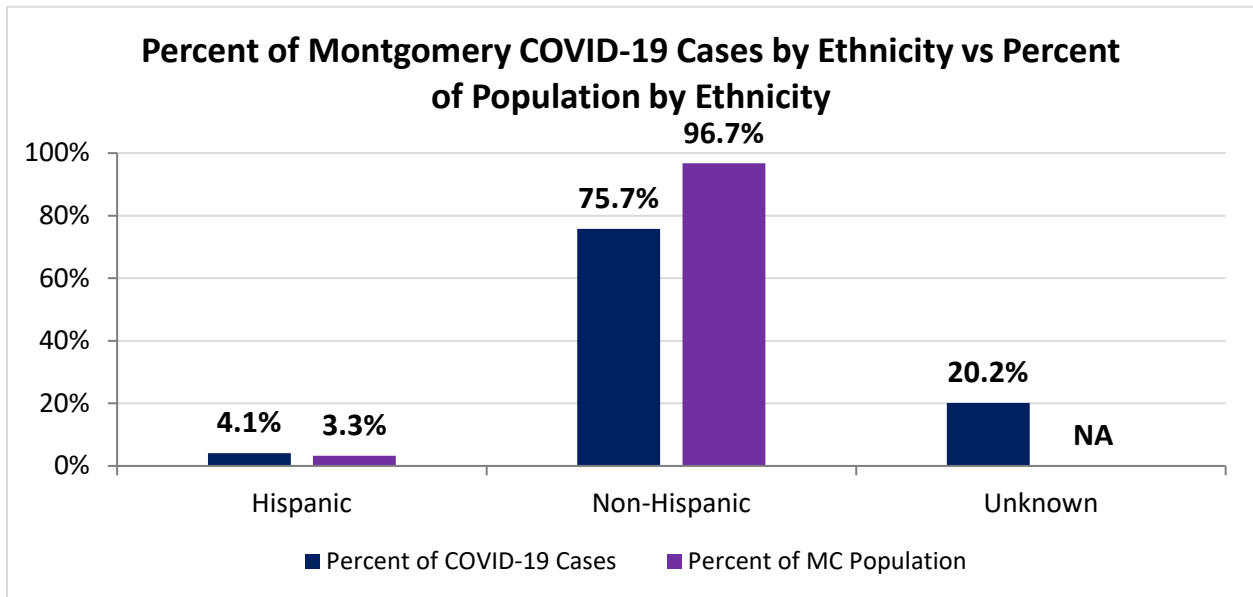
Example - there is a total of 1 case for every 68 Montgomery County residents.



Montgomery County COVID-19 Deaths by Race as of 9/28/2020		
Race	Count	Death Rate
American Indian/Alaskan Native	2	93.5
Asian or Pacific Islander	4	28.4
Black	63	52.1
Other	1	NA
White	96	24.3
Unknown	0	NA
<b>Total</b>	<b>166</b>	<b>31.2</b>

<b>Montgomery County COVID-19 Cases by Ethnicity As of 9/28/20</b>				
<b>Ethnicity</b>	<b>Count</b>	<b>Percent</b>	<b>Case Rate</b>	<b>Rate Interpretation**</b>
Hispanic	320	4.1%	1,846.7	1 in 54
Non-Hispanic	5,918	75.7%	1,150.6	1 in 87
Unknown	1,576	20.2%	NA	NA
<b>Total</b>	<b>7,814</b>	<b>100%</b>	<b>1,469.7</b>	<b>1 in 68</b>

\*\*Rate interpretation represents the number of cases for the given population.  
 Example - there is a total of 1 case for every 68 Montgomery County residents.



<b>Montgomery County COVID-19 Cases by Health Care Worker Status As of 9/28/20</b>		
<b>Status</b>	<b>#</b>	<b>%</b>
Health Care Worker	750	9.6%
Non-Health Care Worker	4,610	59.0%
Unknown	2,454	31.4%
<b>Total</b>	<b>7,814</b>	<b>100%</b>

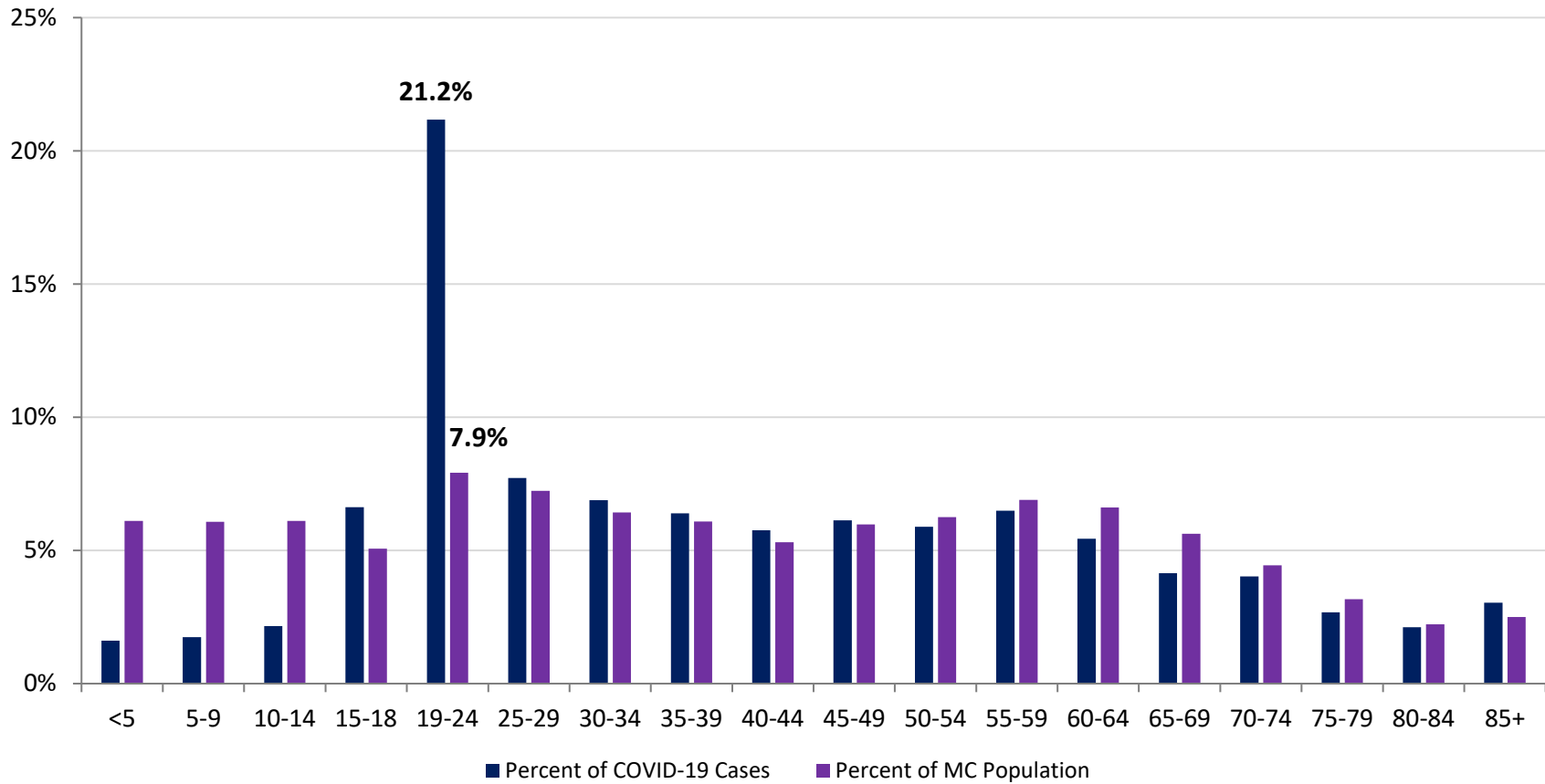
<b>Montgomery County COVID-19 Cases Age Range As of 9/28/20</b>	
<b>Stat</b>	<b>Age in Years</b>
Age Range	<1 - 104
Average Age	40.2
Median Age	36.0

<b>Montgomery County COVID-19 Cases by Age Group As of 9/28/20</b>						
<b>Age Group</b>	<b>Total Cases</b>	<b>Total Case Rate</b>	<b>Percent of COVID-19 Cases</b>	<b>Percent of MC Population</b>	<b>Current Cases*</b>	<b>Current Case Rate*</b>
<5	126	386.2	1.6%	6.1%	7	21.5
5-9	136	422.5	1.7%	6.1%	16	49.7
10-14	169	526.6	2.2%	6.1%	19	59.2
15-18	517	1,957.4	6.6%	5.1%	71	268.8
19-24	1654	3,929.7	21.2%	7.9%	178	422.9
25-29	603	1,572.2	7.7%	7.2%	79	206.0
30-34	538	1,538.9	6.9%	6.4%	58	165.9
35-39	499	1,545.8	6.4%	6.1%	65	201.4
40-44	450	1,565.9	5.8%	5.3%	48	167.0
45-49	479	1,563.4	6.1%	6.0%	51	166.5
50-54	460	1,424.8	5.9%	6.2%	59	182.7
55-59	507	1,399.2	6.5%	6.9%	60	165.6
60-64	425	1,202.2	5.4%	6.6%	53	149.9
65-69	324	1,072.1	4.1%	5.6%	40	132.4
70-74	314	1,273.0	4.0%	4.4%	45	182.4
75-79	209	1,215.8	2.7%	3.2%	35	203.6
80-84	165	1,377.4	2.1%	2.2%	31	258.8
85+	237	1,771.7	3.0%	2.5%	50	373.8
<b>Total</b>	<b>7,812</b>	<b>1,469.3</b>	<b>100%</b>	<b>100%</b>	<b>965</b>	<b>181.5</b>

\*Current Cases – cases with symptom onset in the past 21 days. Current Case Rate – current cases per 100,000.



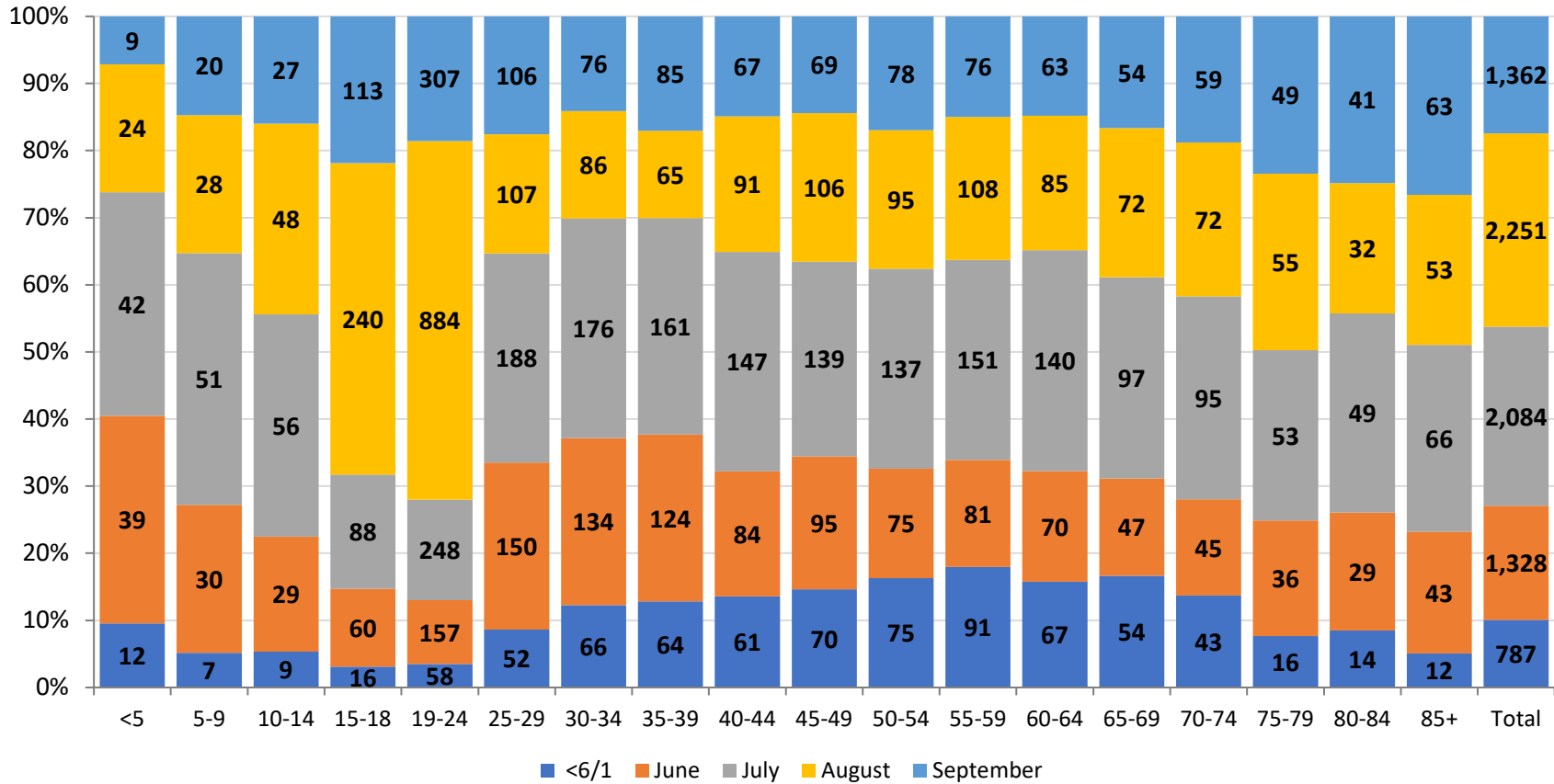
Percent of Montgomery County COVID-19 Cases by Age Group vs Percent of Population by Age Group



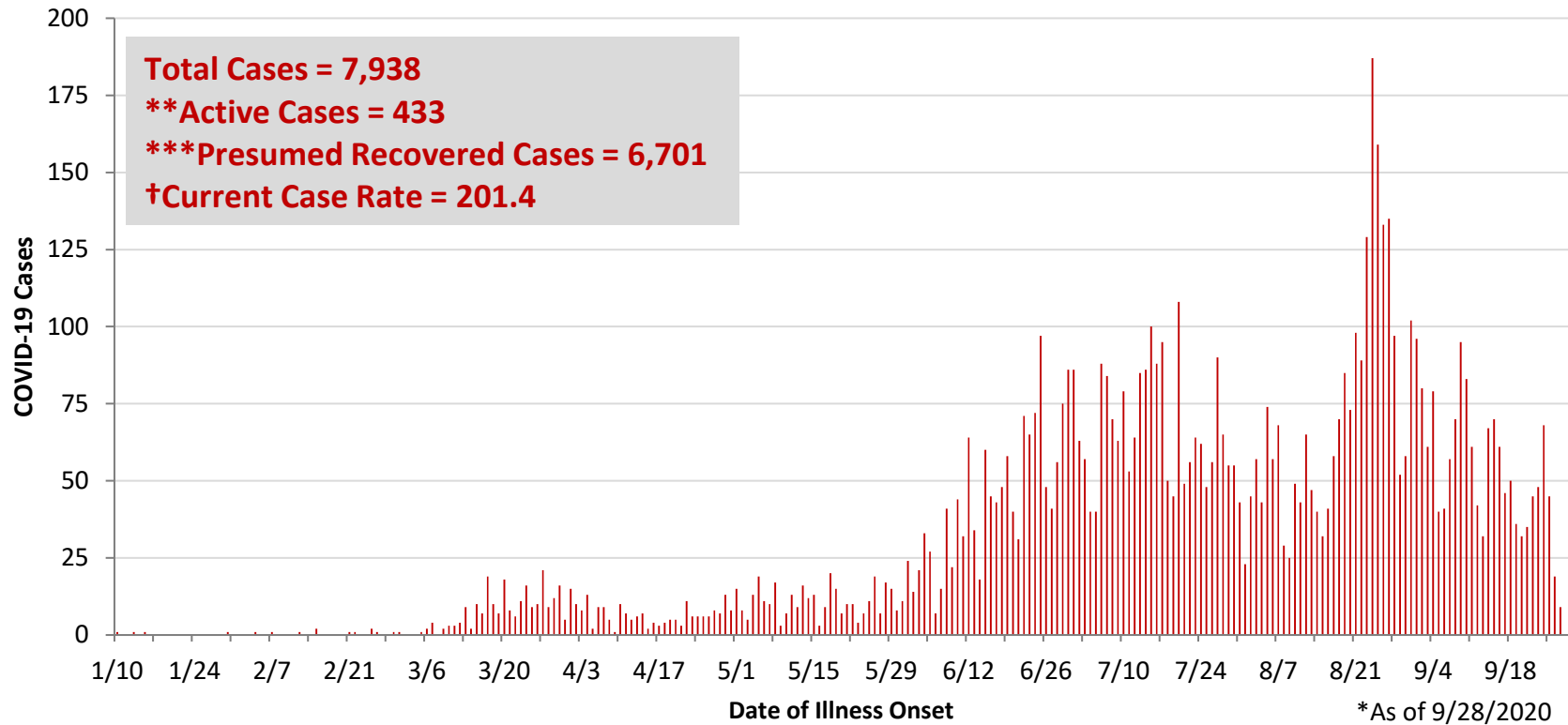
PRELIMINARY Montgomery County COVID-19 Cases by Age Group and by Month <6/1/20 - 9/28/20							
Age Group	Cases <6/1	Cases June	Cases July	Cases August	Cases September	Total Cases	% Change Aug to Sep
<5	12	39	42	24	9	126	-63%
5-9	7	30	51	28	20	136	-29%
10-14	9	29	56	48	27	169	-44%
15-18	16	60	88	240	113	517	-53%
19-24	58	157	248	884	307	1,654	-65%
25-29	52	150	188	107	106	603	-1%
30-34	66	134	176	86	76	538	-12%
35-39	64	124	161	65	85	499	31%
40-44	61	84	147	91	67	450	-26%
45-49	70	95	139	106	69	479	-35%
50-54	75	75	137	95	78	460	-18%
55-59	91	81	151	108	76	507	-30%
60-64	67	70	140	85	63	425	-26%
65-69	54	47	97	72	54	324	-25%
70-74	43	45	95	72	59	314	-18%
75-79	16	36	53	55	49	209	-11%
80-84	14	29	49	32	41	165	28%
85+	12	43	66	53	63	237	19%
<b>Total</b>	<b>787</b>	<b>1,328</b>	<b>2,084</b>	<b>2,251</b>	<b>1,362</b>	<b>7,812</b>	<b>-39%</b>

PRELIMINARY Montgomery County COVID-19 Case Rate by Age Group and by Month <6/1/20 - 9/28/20							
Age Group	Case Rate <6/1	Case Rate June	Case Rate July	Case Rate August	Case Rate September	Overall Case Rate	% Change Aug to Sep
<5	36.8	119.6	128.7	73.6	27.6	386.2	-63%
5-9	21.7	93.2	158.4	87.0	62.1	422.5	-29%
10-14	28.0	90.4	174.5	149.6	84.1	526.6	-44%
15-18	60.6	227.2	333.2	908.6	427.8	1,957.4	-53%
19-24	137.8	373.0	589.2	2100.3	729.4	3,929.7	-65%
25-29	135.6	391.1	490.2	279.0	276.4	1,572.2	-1%
30-34	188.8	383.3	503.4	246.0	217.4	1,538.9	-12%
35-39	198.3	384.1	498.7	201.4	263.3	1,545.8	31%
40-44	212.3	292.3	511.5	316.7	233.1	1,565.9	-26%
45-49	228.5	310.1	453.7	346.0	225.2	1,563.4	-35%
50-54	232.3	232.3	424.3	294.3	241.6	1,424.8	-18%
55-59	251.1	223.5	416.7	298.1	209.7	1,399.2	-30%
60-64	189.5	198.0	396.0	240.4	178.2	1,202.2	-26%
65-69	178.7	155.5	321.0	238.2	178.7	1,072.1	-25%
70-74	174.3	182.4	385.1	291.9	239.2	1,273.0	-18%
75-79	93.1	209.4	308.3	320.0	285.0	1,215.8	-11%
80-84	116.9	242.1	409.0	267.1	342.3	1,377.4	28%
85+	89.7	321.4	493.4	396.2	471.0	1,771.7	19%
<b>Total</b>	<b>148.0</b>	<b>249.8</b>	<b>392.0</b>	<b>423.4</b>	<b>256.2</b>	<b>1,469.3</b>	<b>-39%</b>

**COVID-19 Cases by Age Group and Month as of 9/28/2020**



**PRELIMINARY COVID-19 Cases by Date of Illness Onset  
Montgomery County, 1/10/20 - 9/28/20\***

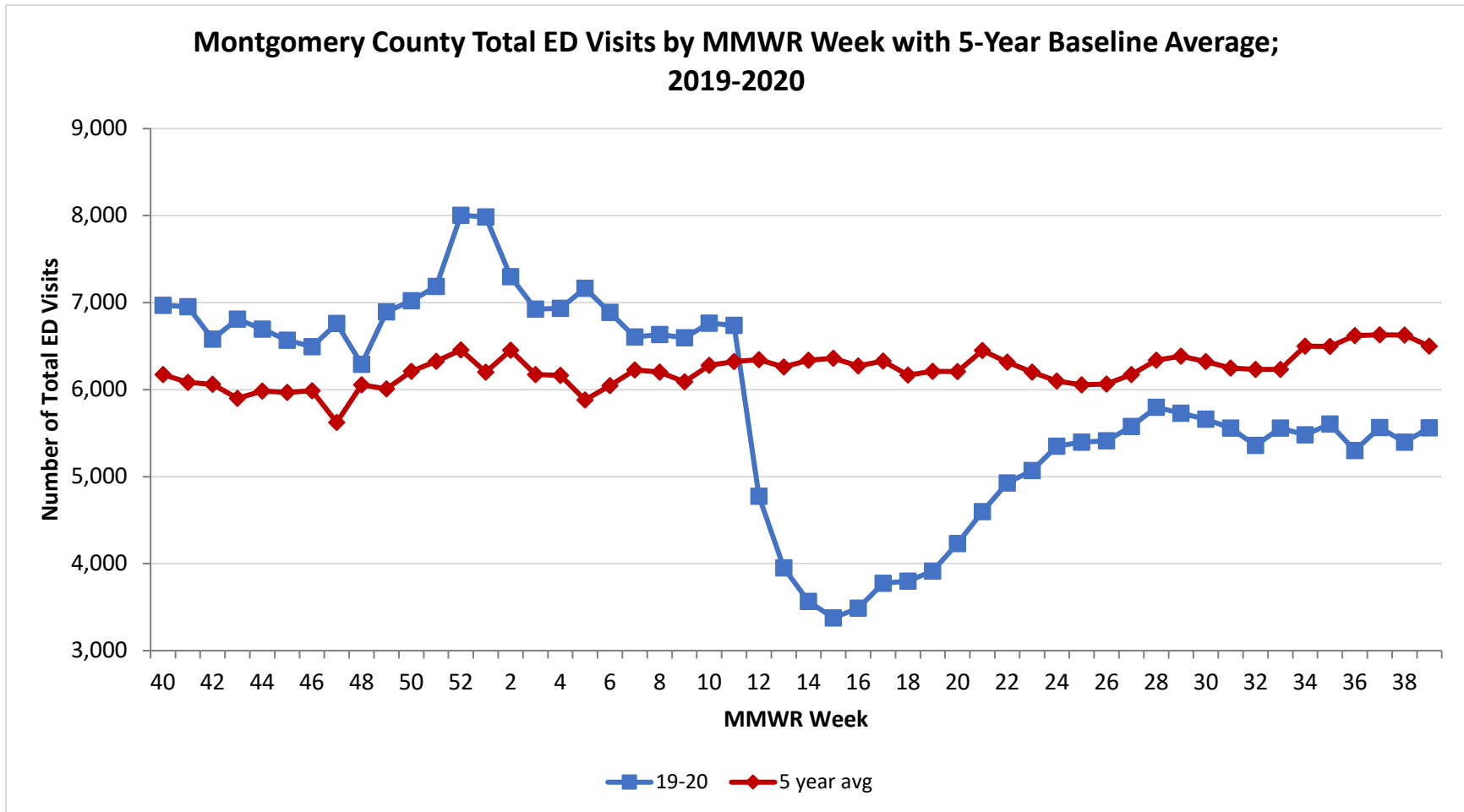


\*\*Active cases are based on the reported illness onset date (using a 10-day window) of reported cases.

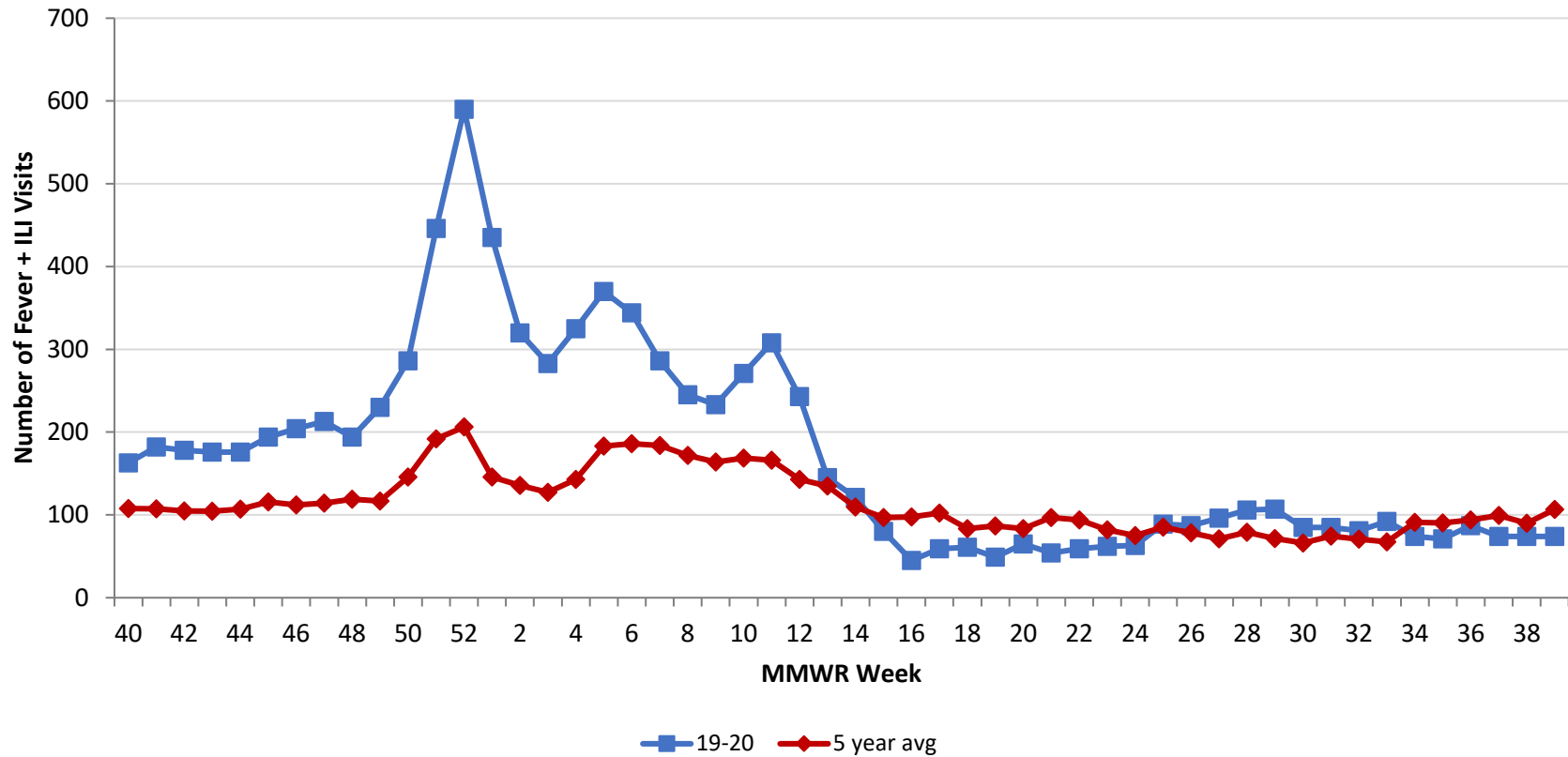
\*\*\*Presumed recovered is defined as cases with a symptom onset date >21 days prior who are not deceased.

†Current Case Rate – current cases (symptom onset past 21 days) per 100,000.

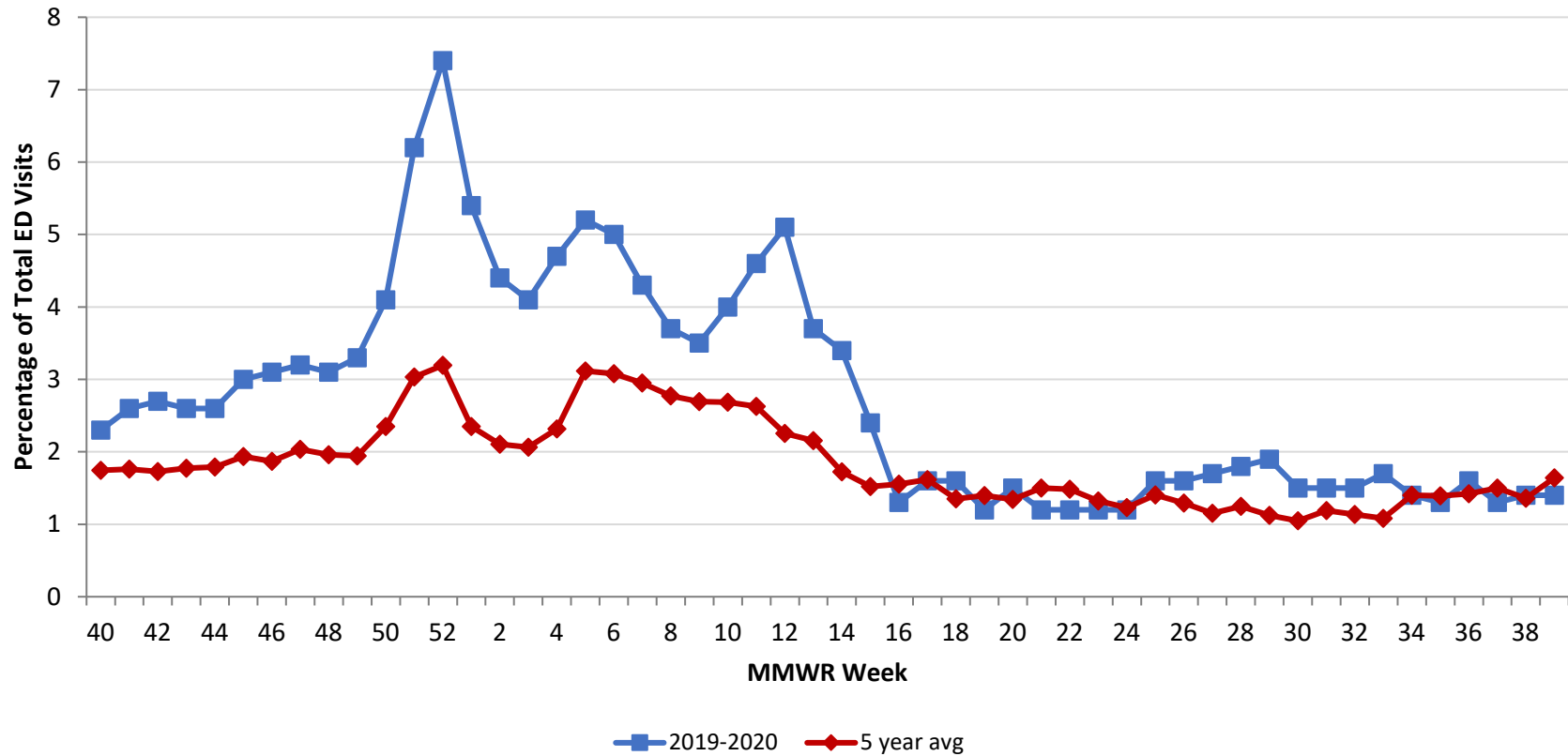
Source: EpiCenter Syndromic Surveillance, Health Monitoring Systems



Montgomery County Fever + ILI Specified ED Visits by MMWR Week with 5-Year Baseline Average; 2019-2020



**Montgomery County Fever + ILI Specified ED Visits (% of Total Visits) by MMWR Week with 5-Year Baseline Average; 2019-2020**





# Total Visits		
MMWR Week	19-20	5-Year Average
4	6,935	6164.0
5	7,164	5881.8
6	6,888	6045.0
7	6,605	6226.8
8	6,633	6200.6
9	6,597	6088.2
10	6,763	6279.6
11	6,738	6321.6
12	4,775	6345.0
13	3,952	6259.8
14	3,565	6337.4
15	3,376	6360.6
16	3,489	6273.4
17	3,774	6327.8
18	3,798	6165.8
19	3,915	6209.8
20	4,231	6208.4
21	4,598	6,449.6
22	4,928	6,315.4
23	5,070	6,201.0
24	5,350	6,098.4
25	5,398	6,055.8
26	5,412	6,063.2
27	5,577	6,173.0
28	5,797	6,339.0
29	5,728	6384.6
30	5,661	6,322.0
31	5,557	6,247.2
32	5,359	6232.8
33	5,558	6,233.8
34	5,481	6,501.0
35	5,606	6,496.2
36	5,301	6,621.0
37	5,563	6,630.2
38	5,396	6,627.8
39	5,560	6,500.4

# Fever + ILI Visits		
MMWR Week	19-20	5-Year Average
4	325	142.8
5	370	183.2
6	344	186.2
7	286	183.8
8	245	171.8
9	233	164.0
10	271	168.6
11	308	166.2
12	243	143.0
13	145	134.8
14	121	109.4
15	80	96.8
16	45	97.6
17	59	102.4
18	61	83.4
19	49	86.8
20	65	83.4
21	54	96.8
22	59	93.8
23	62	82.0
24	63	75.0
25	89	85.2
26	87	78.4
27	96	71.2
28	106	79.2
29	107	71.6
30	85	66.2
31	85	74.2
32	81	70.8
33	92	67.4
34	74	91.0
35	71	90.4
36	87	94.0
37	74	99.4
38	74	90.0
39	74	106.6

% Fever + ILI Visits		
MMWR Week	19-20	5-Year Average
4	4.7	2.3
5	5.2	3.1
6	5	3.1
7	4.3	3.0
8	3.7	2.8
9	3.5	2.7
10	4	2.7
11	4.6	2.6
12	5.1	2.3
13	3.7	2.2
14	3.4	1.7
15	2.4	1.5
16	1.3	1.6
17	1.6	1.6
18	1.6	1.4
19	1.2	1.4
20	1.5	1.3
21	1.2	1.5
22	1.2	1.5
23	1.2	1.3
24	1.2	1.2
25	1.6	1.4
26	1.6	1.3
27	1.7	1.2
28	1.8	1.2
29	1.9	1.1
30	1.5	1.0
31	1.5	1.2
32	1.5	1.1
33	1.7	1.1
34	1.4	1.4
35	1.3	1.4
36	1.6	1.4
37	1.3	1.5
38	1.4	1.4
39	1.1	1.6