



Montgomery County COVID-19 Summary as of 4/23/2021

Note. Data and graphics can be viewed via the COVID-19 dashboard:

<https://www.phdmc.org/coronavirus-updates/323-covid-19-dashboard>

Overall:

- **The current case rate (per 100,000) decreased 2% in the last week (from 266 on 4/16/21 to 260 on 4/23/21).**
- **Montgomery County's average daily COVID-19 case count has decreased 4% in the past week (from 77 cases per day on 4/9/21 to 74 cases per day on 4/16/21).**

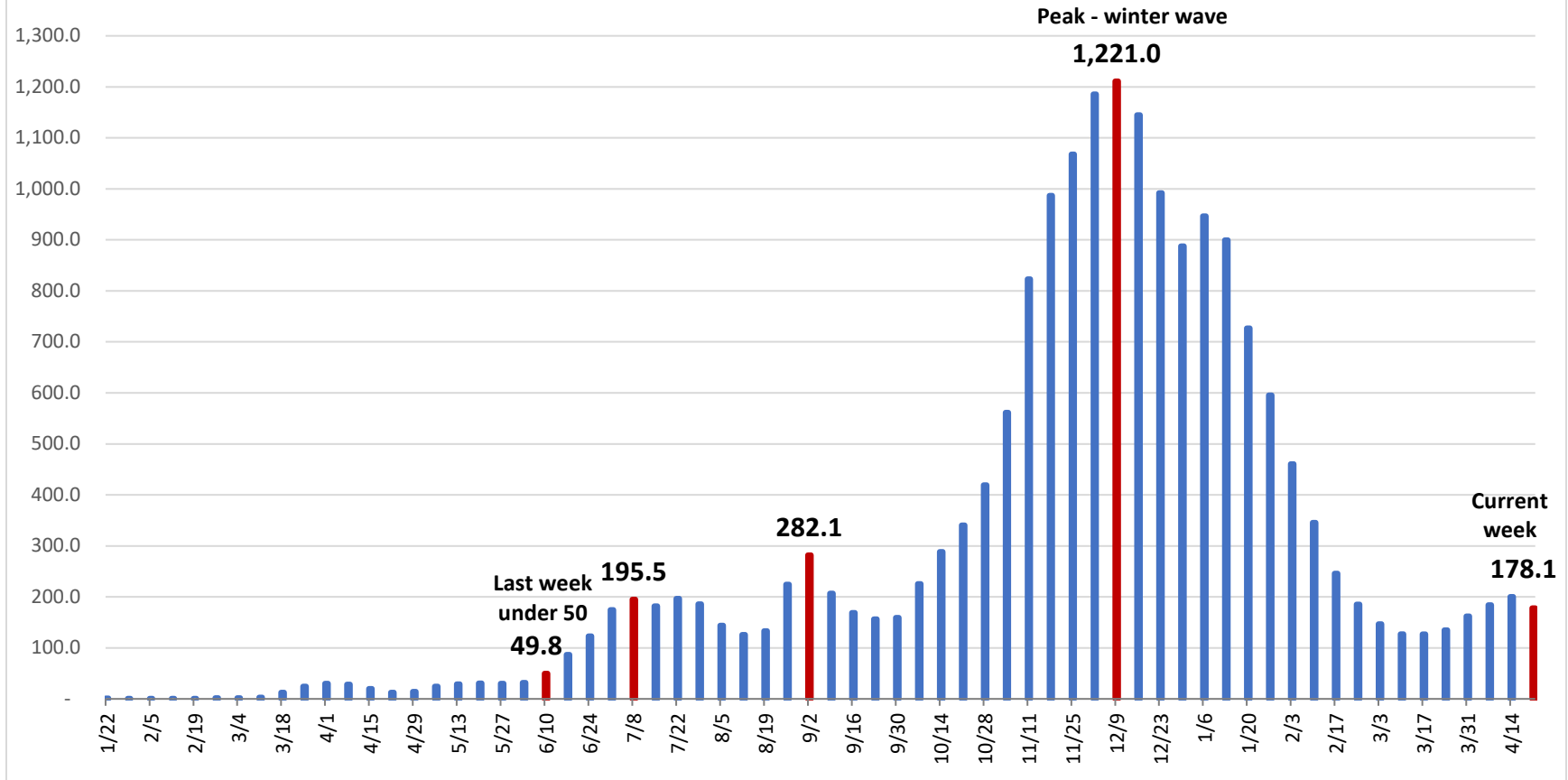
Montgomery County COVID-19 Outbreak and School Data:

- Montgomery County currently has 204 COVID-19 outbreak investigations open at various long-term care facilities, businesses, and schools.
- **Eight outbreak investigations opened in the past week.**
- Montgomery County has a total of 2,446 cases associated with schools (1,506 students, 940 staff). **Of the 2,446 cases, 2.5% (60 cases – 57 students, 3 staff) were reported in the past week, a 106% increase from last week.**

Demographics:

- Blacks/African Americans have the highest current case rate (310.1) and the second highest number of current cases (375) – **an 8% increase from last week (286.2; 346)**. Whites have the second highest current case rate (189.3) and the highest number of current cases (747 cases), **a 2% increase in the last week (186.0; 734)**.
- Blacks have the highest overall rate (7,537.0).
- **Current cases have increased by 5% in the last week (from 1,277 on 4/15/21 to 1,335 on 4/22/21).**
- **Race is unknown for 16% of total cases and 9% of current cases.**
- The age group 19-24 years has the highest current case rate (496.6) – a 1% increase from last week.
- Individuals 70 years and older account for 13% of total cases, 43% of total hospitalizations, and 77% of total deaths.

COVID-19 Cases per 100,000 Residents in Preceding Two Weeks, Montgomery County



- The two-week incidence rate of cases (178.1) has increased by 40% in the past month (from 127.0 on 3/17).

Source: COVID-19 Dashboard, Ohio Department of Health