



Montgomery County COVID-19 Summary as of 4/30/2021

Note. Data and graphics can be viewed via the COVID-19 dashboard:

<https://www.phdmc.org/coronavirus-updates/323-covid-19-dashboard>

Overall:

- **The current case rate (per 100,000) decreased 18% in the last week (from 260 on 4/23/21 to 242 on 4/30/21).**
- **Montgomery County's average daily COVID-19 case count has decreased 4% in the past week (from 74 cases per day on 4/16/21 to 71 cases per day on 4/23/21).**

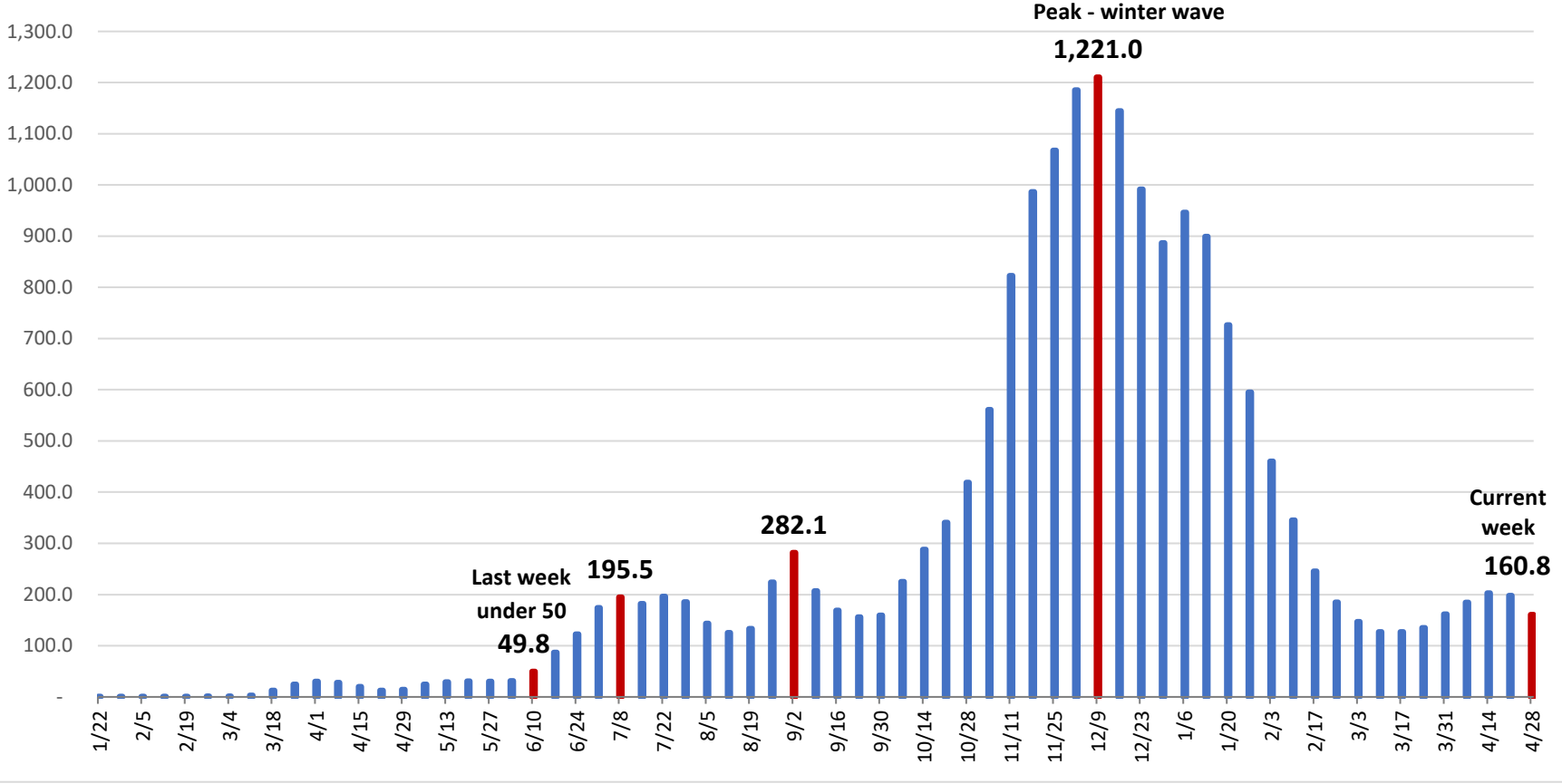
Montgomery County COVID-19 Outbreak and School Data:

- Montgomery County currently has 205 COVID-19 outbreak investigations open at various long-term care facilities, businesses, and schools.
- **One outbreak investigation opened in the past week.**
- Montgomery County has a total of 2,507 cases associated with schools (1,558 students, 949 staff). **Of the 2,507 cases, 2.4% (60 cases – 51 students, 9 staff) were reported in the past week, no change from last week.**

Demographics:

- Blacks/African Americans have the highest current case rate (325.9) and the second highest number of current cases (394) – **a 5% increase from last week (310.1; 375)**. Whites have the second highest current case rate 170.1) and the highest number of current cases (671 cases), **a 10% decrease in the last week (189.3; 747)**.
- Blacks have the highest overall rate (7,669.3).
- **Current cases have decreased by 5% in the last week (from 1,335 on 4/22/21 to 1,273 on 4/29/21).**
- **Race is unknown for 16% of total cases and 8% of current cases.**
- The age group 30-34 years has the highest current case rate (403.3).
- Individuals 70 years and older account for 13% of total cases, 43% of total hospitalizations, and 77% of total deaths.

COVID-19 Cases per 100,000 Residents in Preceding Two Weeks, Montgomery County



- The two-week incidence rate of cases (160.8) has decreased by 18% in the past week (from 198 on 4/21).

Source: COVID-19 Dashboard, Ohio Department of Health