



## Regional Seasonal Influenza Activity Report MMWR Week 49 12/2/2018 – 12/8/2018

### Weekly Influenza Activity Summary:

**Montgomery County (Week 49):** The number of Influenza-associated hospitalizations from week 49 was below the 5-year baseline average and did not change from week 48. There were slight increases in the percentage of emergency department (ED) visits for Constitutional syndrome (2.2% increase) and Fever & ILI symptoms (7.1% increase). Both of these indicators were above the 5-year baseline average for week 49. Overall, influenza activity in Montgomery County has been minimal.

**West Central Ohio Region (Week 49):** Regional influenza-associated hospitalizations were down during week 49 (3) compared to week 48 (10). However, the number of outpatient influenza cases increased by 67% from week 48 to week 49. Overall, regional influenza activity has been minimal.

### Ohio (Week 49): Current Activity Level - Local

Increased ILI in 1 region; ILI activity in other regions is not increased AND recent (within the past 3 weeks) lab evidence of influenza in region with increased ILI, OR 2 or more institutional outbreaks (ILI or lab confirmed) in 1 region; ILI activity in other regions is not increased AND recent (within the past 3 weeks) lab evidence of influenza in region with the outbreaks; virus activity is no greater than sporadic in other regions.

The Ohio Department of Health (ODH) has reported the following positive results from flu specimens sent to the ODH laboratory (through 12/8/18): (24) Influenza A/pdmH1N1; (1) Influenza A/H3N2; (1) Influenza B

**National (Week 49):** Influenza activity in the United States remained slightly elevated. Influenza A(H1N1)pdm09, influenza A(H3N2), and influenza B viruses continue to co-circulate, with influenza A(H1N1)pdm09 viruses reported most commonly by public health laboratories since September 30, 2018.

For hospitals and other regional healthcare facilities to more accurately monitor influenza in the area, this report will include regional and Montgomery County specific influenza activity. The regional influenza report will include positive influenza cases from healthcare facilities in Auglaize, Butler, Champaign, Clark, Darke, Greene, Miami, Montgomery, Preble, Shelby, and Warren counties (<http://www.gdaha.org/regional-hospital-locator>).

### Confirmed Influenza-associated Hospitalizations

MMWR Week	40-46*	47*	48*	49*	Total since week ending 10/6/18
Week Ending	11/17/18	11/24/18	12/1/18	12/8/18	
Auglaize	1	0	0	0	1
Butler	0	2	1	1	4
Champaign	0	0	0	0	0
Clark	0	0	0	0	0
Darke	0	0	0	0	0
Greene	5	0	2	0	7
Miami	0	0	0	0	0
Montgomery	3	3	2	2	10
Preble	0	0	2	0	2
Shelby	0	0	0	0	0
Warren	1	0	3	0	4
<b>Total</b>	<b>10</b>	<b>5</b>	<b>10</b>	<b>3</b>	<b>28</b>

\*Numbers may change based on updated ODRS data.

## Weekly Regional Outpatient Influenza Cases

MMWR Week	Week Ending	Influenza A	Influenza B	ILI* Reports (Sentinel Providers)	Weekly Total
40-46	11/17/18	12	4	14	30
47	11/24/18	6	1	0	7
48	12/1/18	10	0	2	12
49	12/8/18	14	0	6	20
<b>Season Total</b>	NA	<b>42</b>	<b>5</b>	<b>22</b>	<b>69</b>

\*Influenza-like Illness (ILI)

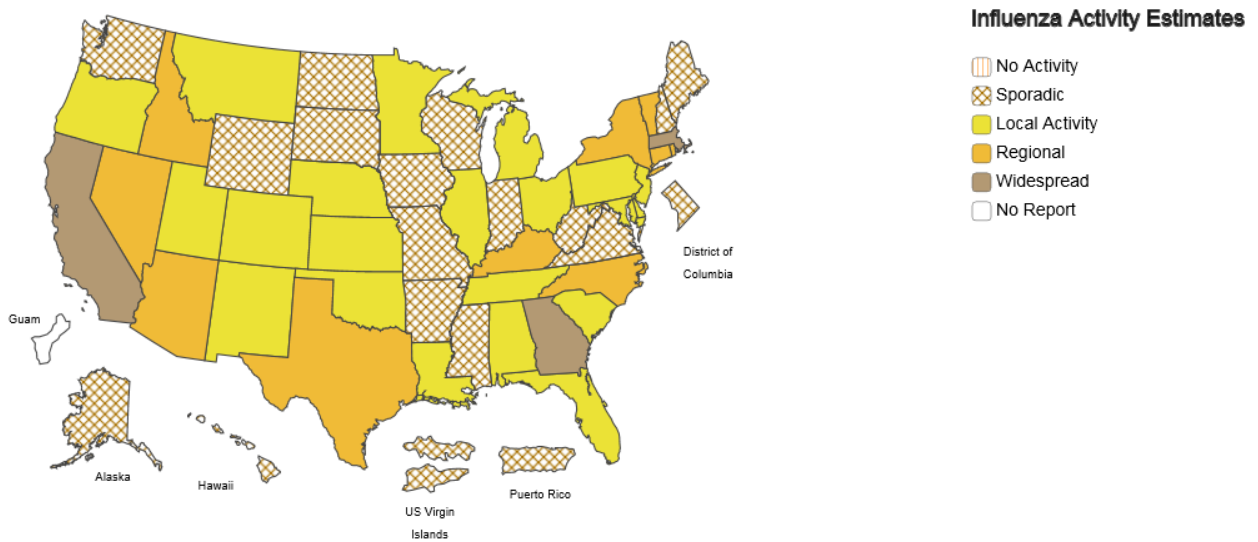
FLUVIEW



### A Weekly Influenza Surveillance Report Prepared by the Influenza Division

Weekly Influenza Activity Estimates Reported by State and Territorial Epidemiologists\*

Week Ending Dec 08, 2018 - Week 49



\*This map indicates geographic spread and does not measure the severity of influenza activity.

National Influenza Activity Summary <http://www.cdc.gov/flu/weekly/fluactivitysurv.htm>

### Additional Surveillance Data & Flu Facts

Flu Facts <http://www.flu.gov/>

Ohio Department of Health Seasonal Influenza Activity Summary <https://odh.ohio.gov/wps/portal/gov/odh/know-our-programs/seasonal-influenza/ohio-flu-activity/>

Montgomery County Seasonal Influenza Activity Summary <http://www.phdmc.org/report/montgomery-county-flu-activity-level>



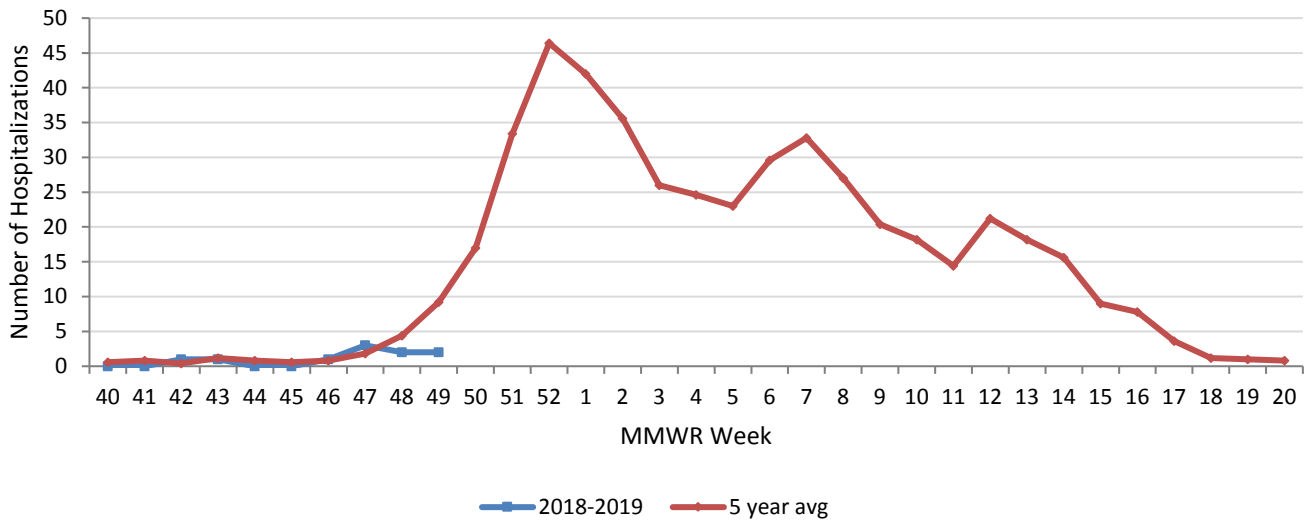
## Montgomery County Seasonal Influenza Activity Report MMWR Week 49 12/2/2018 – 12/8/2018

### Montgomery County Weekly Surveillance Data

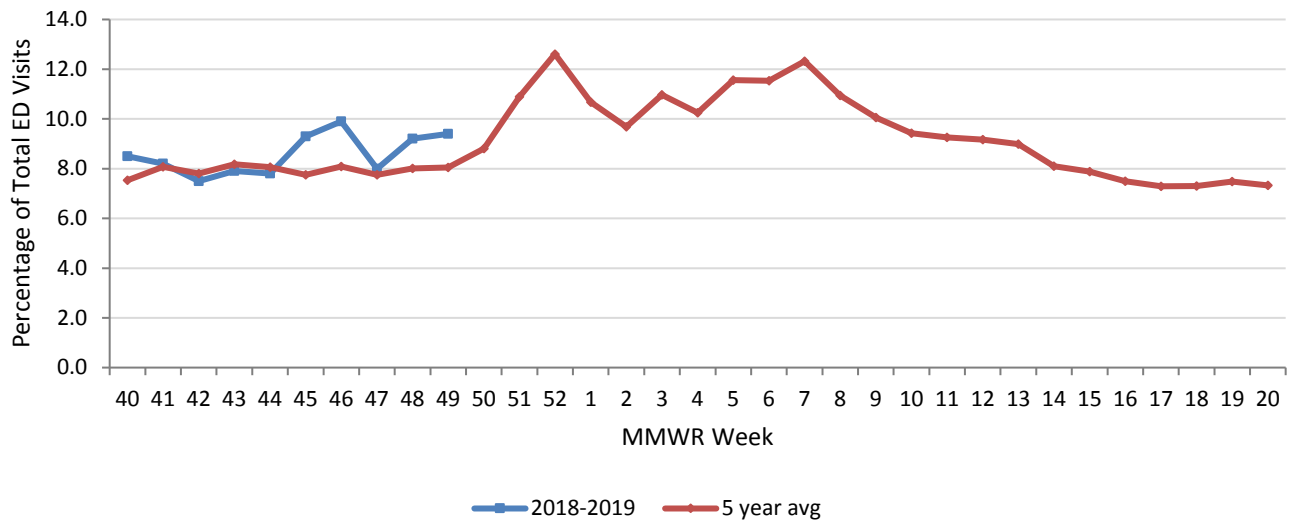
Surveillance Data	Current Week	% Change	Trend
Influenza Hospitalizations	2	*	-
% Constitutional ED visits	9.4%	2.2%	↑
% Fever & ILI ED visits	3.0%	7.1%	↑
Thermometer sales	84	2.4%	↑

\* Percent change not calculated for small numbers  
Dash (-) indicates no change

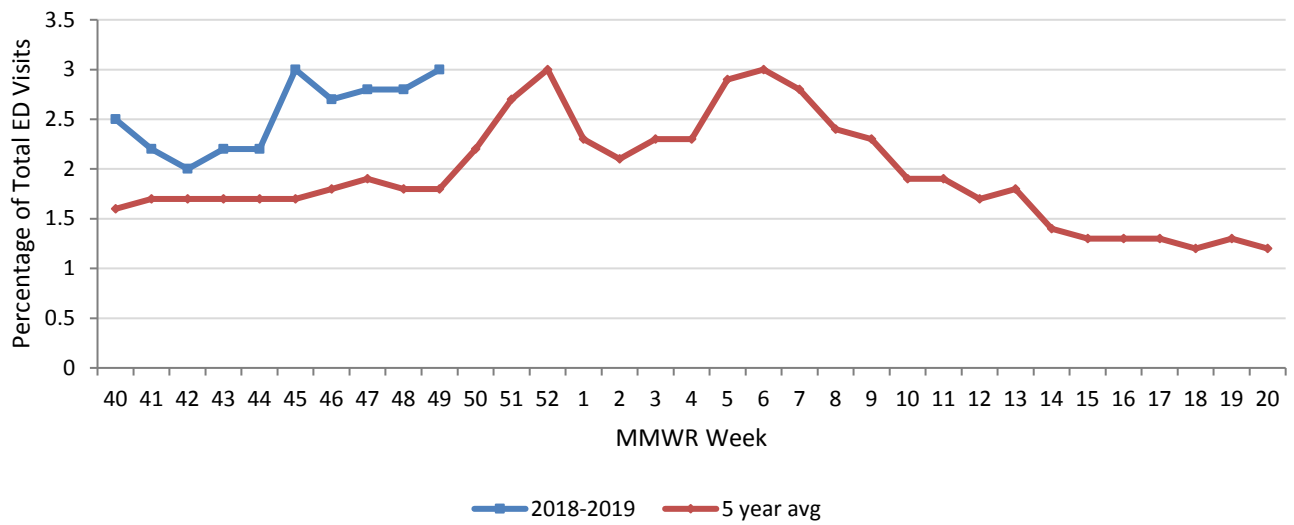
### Montgomery County Confirmed Influenza-associated Hospitalizations by MMWR Week with 5-Year Baseline Average; 2018-2019



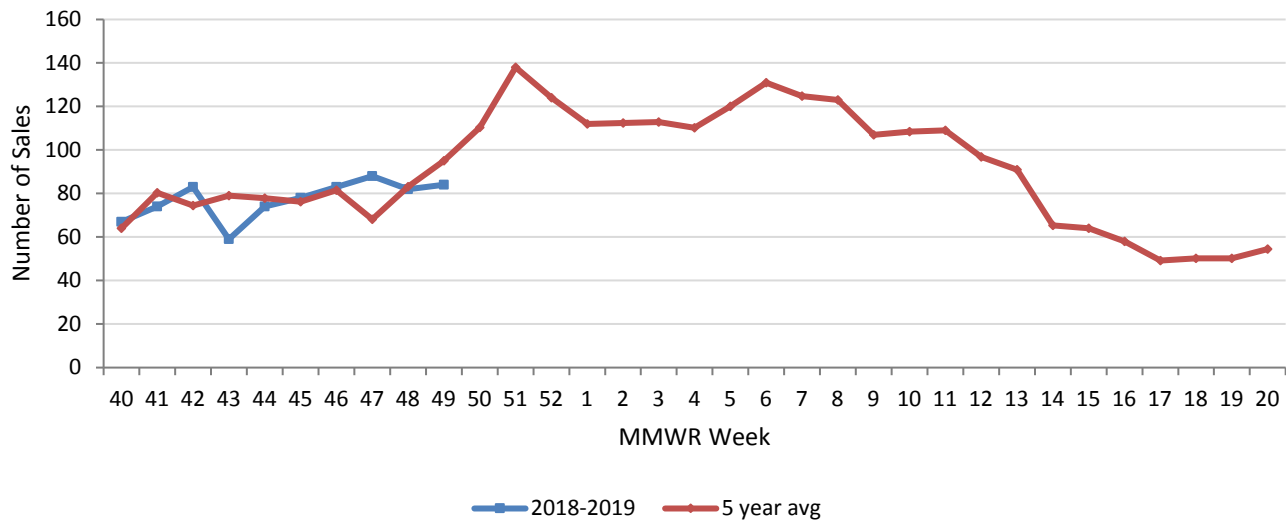
### Montgomery County Constitutional ED Visits by MMWR Week with 5-Year Baseline Average; 2018-2019



### Montgomery County Fever & ILI Specified ED Visits by MMWR Week with 5-Year Baseline Average; 2018-2019



## Montgomery County Thermometer Sales by MMWR Week with 5-Year Baseline Average; 2018-2019




---

### Sources of Influenza Surveillance Data

Six types of data sources are examined on a weekly basis to help determine the influenza activity level for Montgomery County:

**National Retail Data Monitor (NRDM)-OTC Drug Purchases:** The NRDM collects over-the-counter (OTC) drug sales information from approximately 80 Montgomery County chain drug stores and grocery stores. For influenza surveillance, thermometer sales are monitored on a weekly basis.

**Emergency Department Visits (EpiCenter):** EpiCenter collects emergency department chief complaint data from hospitals and urgent care facilities across Ohio counties in real time and classifies them into symptom and syndrome categories. Chief complaints from the constitutional syndrome category and the ILI + Fever symptoms classifier are analyzed for influenza surveillance.

**Sentinel Providers (ILINet):** Sentinel providers, through the US Influenza-like Illness Surveillance Network (ILINet), collect outpatient ILI data. ILI is defined as a fever (> 100 °F), **and** cough and/or sore throat without another known cause. Providers report the total number of patients seen and the number of patients with ILI by age group on a weekly basis. Sentinel providers also submit specimens for influenza testing to the ODH laboratory throughout the influenza season.

**Laboratory Surveillance:** Positive laboratory reports are forwarded to local health departments. Generally, specimens are submitted by health care providers or hospitals.

**Influenza-associated Hospitalizations (ODRS):** Influenza-associated hospitalizations are reported to local health departments for entry into the Ohio Disease Reporting System (ODRS). Hospitalizations can be used as an indicator of the severity of illness during a particular influenza season. This condition became reportable in 2009.

**Influenza-associated Pediatric Mortality (ODRS):** Influenza-associated pediatric mortalities are reported to local health departments for entry into ODRS. Pediatric deaths can be an indicator of the severity of illness during the influenza season. This condition became reportable in 2005.

---

For further information or questions, please contact Public Health – Dayton & Montgomery County, Epidemiology Department at [epi@phdmc.org](mailto:epi@phdmc.org) or 937-224-3691.