

Public Health-Dayton & Montgomery County **Dayton Council on Health Equity**

2013 DASHBOARD REPORT NPA CHECKLIST SURVEY

Cheryl Scroggins, Program Coordinator

117 South Main Street

Dayton, OH 45422-1280

O: (937) 225-4962

F: (937) 496-3071

E-mail: cscroggins@phdmc.org

Web page: www.phdmc.org/dche



**Dayton Council
on Health Equity**



2013 Dayton NPA Dashboard



2013 ORGANIZATIONAL PROFILES IN DAYTON AND MONTGOMERY COUNTY, OHIO

This report illustrates descriptive data generated from a PHDMC-developed, online questionnaire, *National Partnership for Action (NPA) Organizational Checklist*.



This is based on the *National Stakeholder Strategy for Achieving health Equity* (full narrative outlining five goals available from <http://wminorityhealth.hhs.gov/npa/>).



Public Health
Prevent. Promote. Protect.
Dayton & Montgomery County

The questionnaire was disseminated in the Spring of 2013 to organizations that partner with Public Health - Dayton & Montgomery County.

**Dayton Council
on Health Equity**

2013 Dayton NPA Dashboard



Help us answer a key evaluation question:



“How are leaders in public agencies and in the private, nonprofit, and community sectors engaged in collaborative, efficient, and equitable working partnerships to eliminate health disparities and achieve health equity?” (NPA, 2014)



Public Health
Prevent. Promote. Protect.
Dayton & Montgomery County

**Dayton Council
on Health Equity**

Organizations can complete the survey and obtain their own individual organization report .

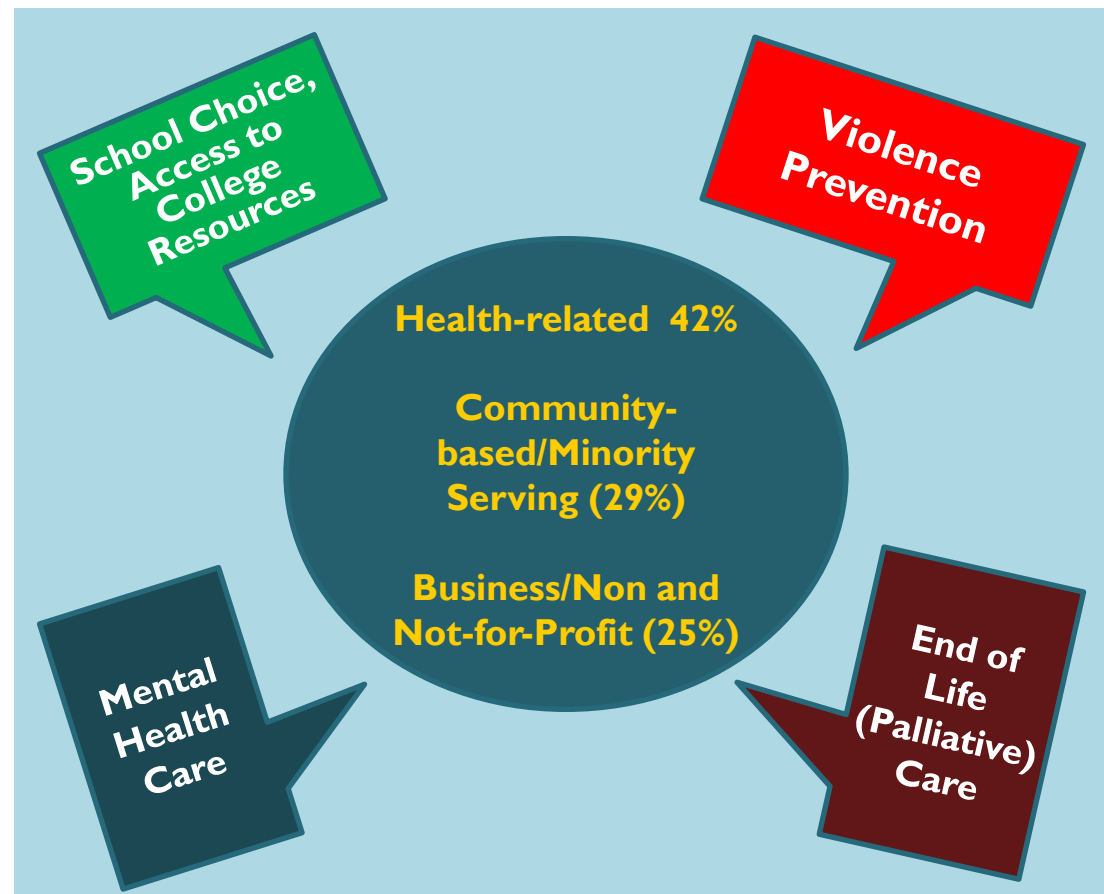
2013 Dayton NPA Dashboard



Public Health
Prevent. Promote. Protect.
Dayton & Montgomery County

**Dayton Council
on Health Equity**

*Who completed the NPA Checklist as a
Public Health - Dayton & Montgomery County
Partner?*



2013 Dayton NPA Dashboard



Public Health
Prevent. Promote. Protect.
Dayton & Montgomery County

**Dayton Council
on Health Equity**

The most common organizational foci for our partners:

- Community outreach
- Health education
- Advocacy/public policy
- Healthcare/screenings
- Crisis intervention
- Interpretation/translation

Definitions:

Health disparity is a particular type of health difference closely linked to socioeconomic, environmental and historical disadvantages.

Health equity is attainment of the highest level of health for all people, regardless of race or ethnicity or economic standing.

Health care disparity is the differences in the quality of health care that are not due to access, medical needs, or appropriate intervention; but are due to bias, discrimination, and stereotyping of individuals by providers or at the systems level.

Source: USDHHS NPA Stakeholder Strategy for Achieving Health Equity, 2011.

NPA GOALS

The five (5) NPA goals for communities (abbreviated) are:

1. Increase awareness of the significance of health disparities
2. Strengthen and broaden leadership for addressing health disparities
3. Improve health and healthcare outcomes for racial, ethnic, and underserved populations
4. Improve cultural and linguistic competency and the diversity of the health-related workforce
5. Improve data availability and coordination, utilization, and diffusion of research and evaluation outcomes



RESPONDING TO QUESTIONS

Possible scoring for each inquiry:

None Minimal Moderate Significant Optimal

EXAMPLE: GOAL 1, AWARENESS

Increase awareness of the significance of health disparities, their impact on population health, and the actions necessary to improve health outcomes for underserved populations, including racial and ethnic groups.

Includes health disparities on the organization's board agenda

○ ○ ○ ○ ○

Provides administration leaders, health professionals, and staff, information or an orientation about health disparities (significantly different rates of disease, death and disability between population groups) and social determinants of health (including community/ environmental and large systems that contribute to poor health outcomes).

○ ○ ○ ○ ○

*Adapted from the USDHHS National Stakeholder Strategy for Achieving Health Equity

2013 Dayton NPA Dashboard

Community Benchmark- Goal 1

Averages for all partners for the 8 Strategies in Goal 1:

1. **89%** Develop and support partnerships that drive action
 2. **85%** Tailor messages that are culturally sensitive and culturally appropriate
 3. **85%** Provide administration leaders, health professionals, and staff information or an orientation about health disparities
 4. **81%** Tailor messages to present varied views of the consequences of health disparities in a way that fosters understanding, action, cooperation, and collaboration
-
1. **78%** Use electronic and social media
 2. **76%** Tailor messaging and communication mechanisms for specific audiences across the lifespan
 3. **74%** Include health disparities on the organization's agenda
 4. **70%** Utilize traditional media, such as print or flyers

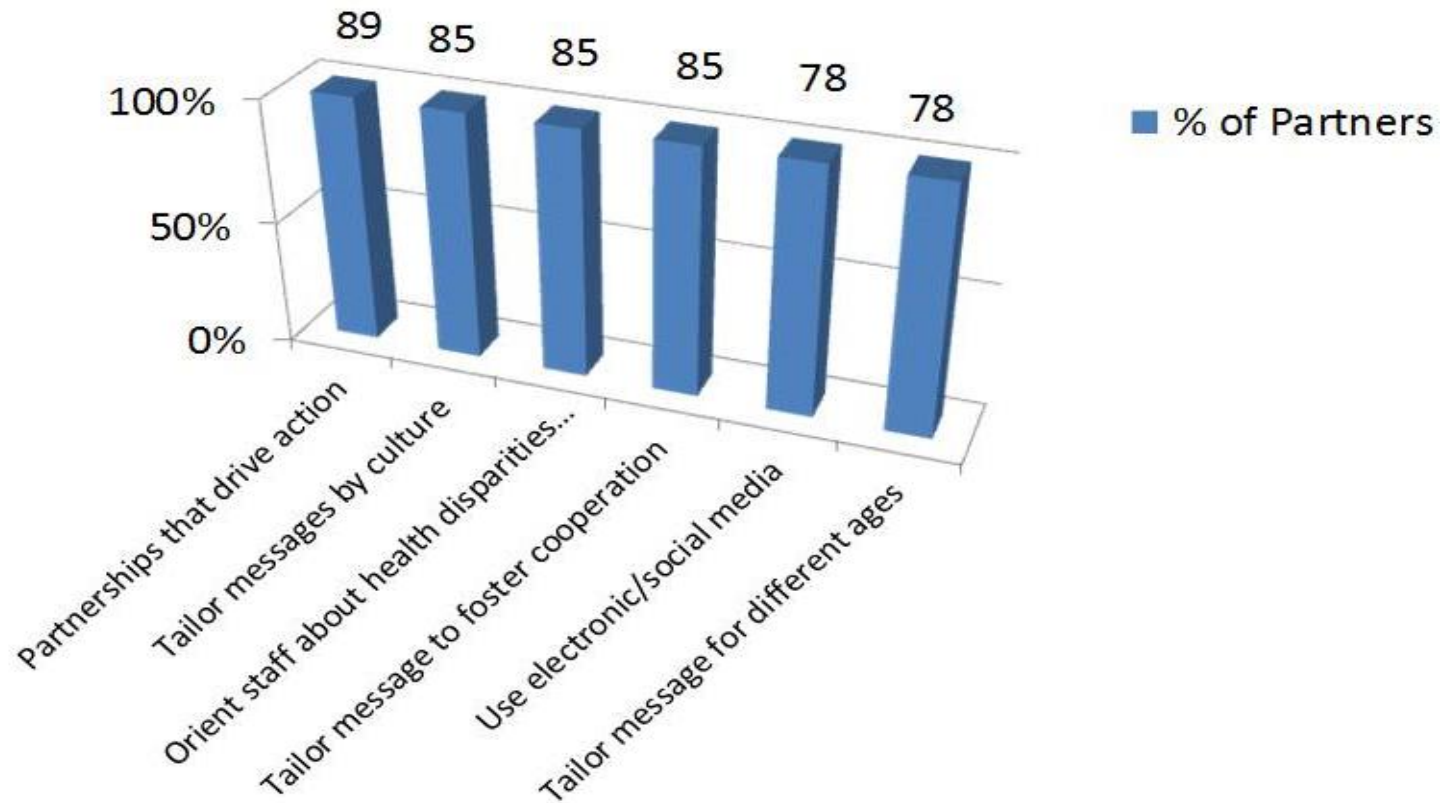


Dayton Council
on Health Equity



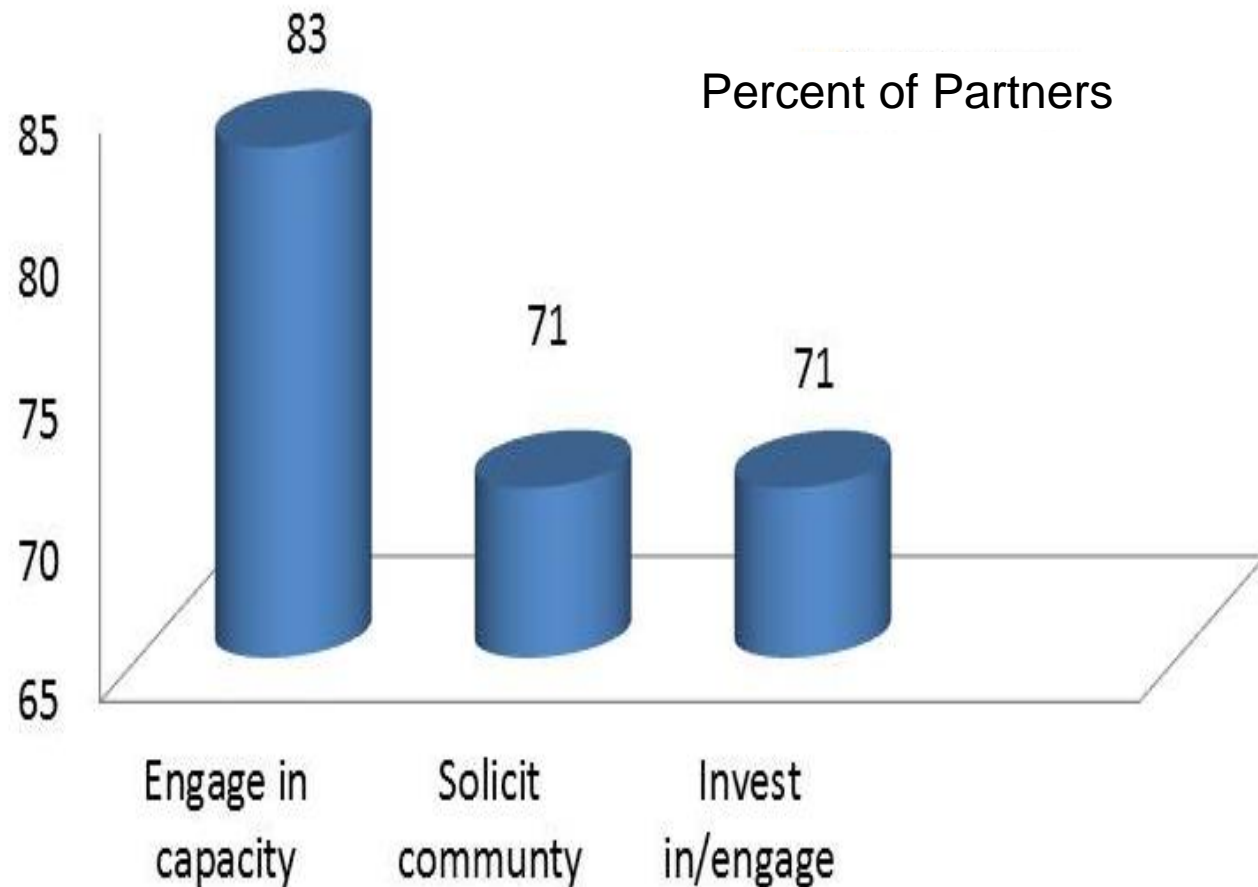
Goal #1 - 2013 Dayton NPA Dashboard

Increase awareness of the significance of health disparities, their impact on population health, and the actions necessary to improve health outcomes for underserved populations, including racial and ethnic groups



Goal #2 - 2013 Dayton NPA Dashboard

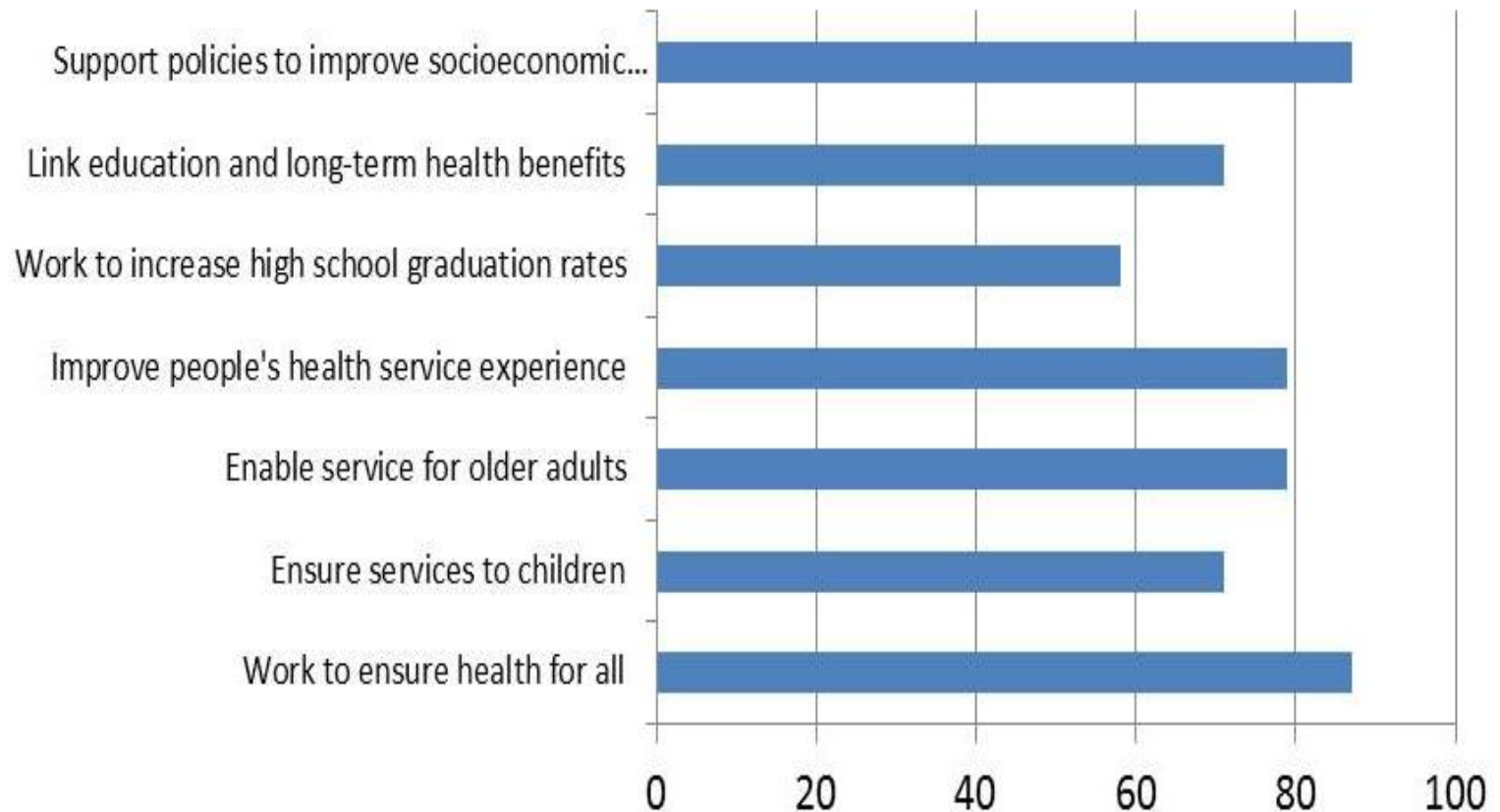
Strengthen and broaden leadership for addressing health disparities



Goal #3 - 2013 Dayton NPA Dashboard

Improve health and healthcare outcomes for racial, ethnic, and underserved populations

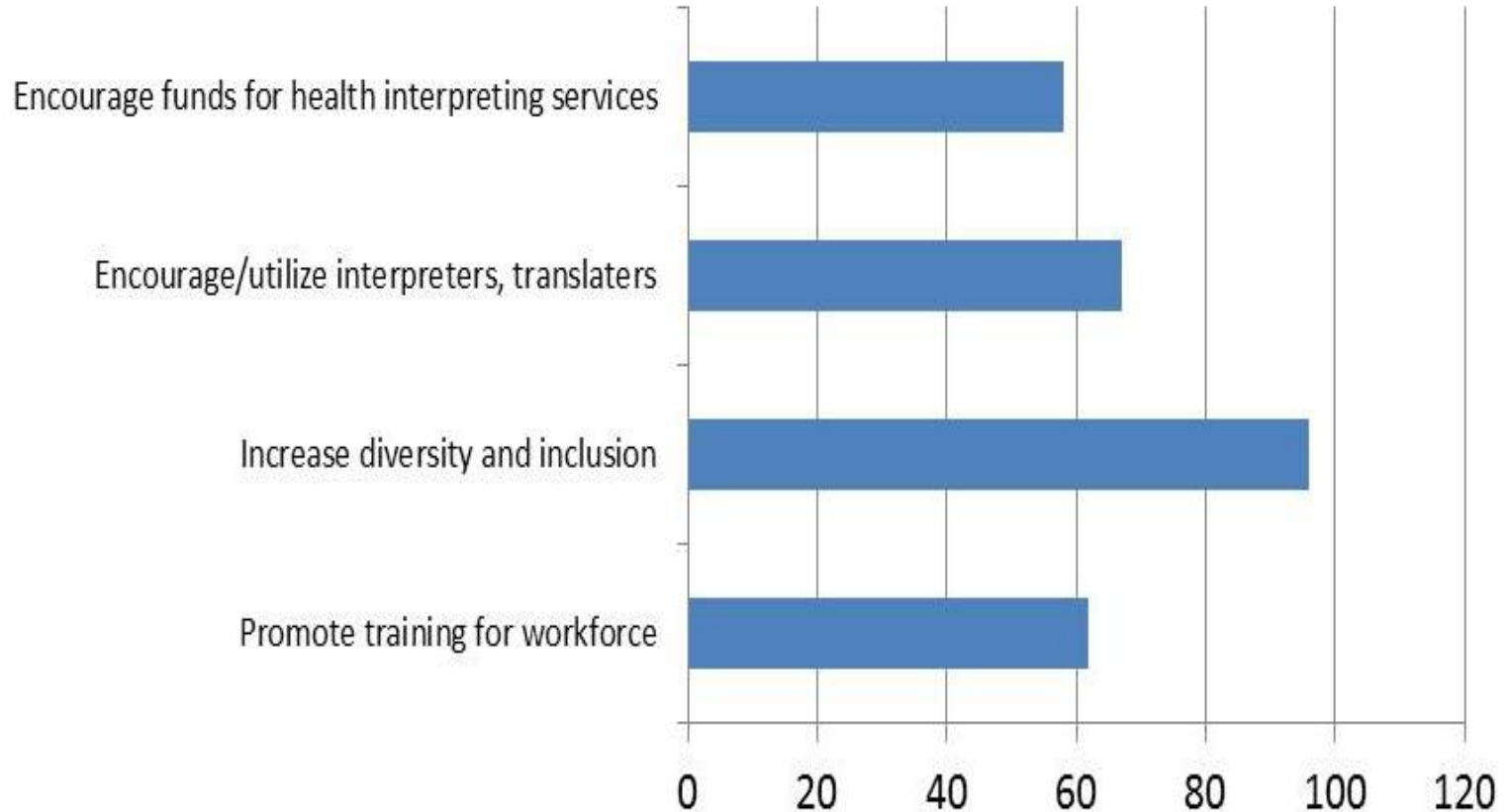
Percent of Partners



Goal #4 - 2013 Dayton NPA Dashboard

Improve cultural and linguistic competency and diversity of the health-related workforce

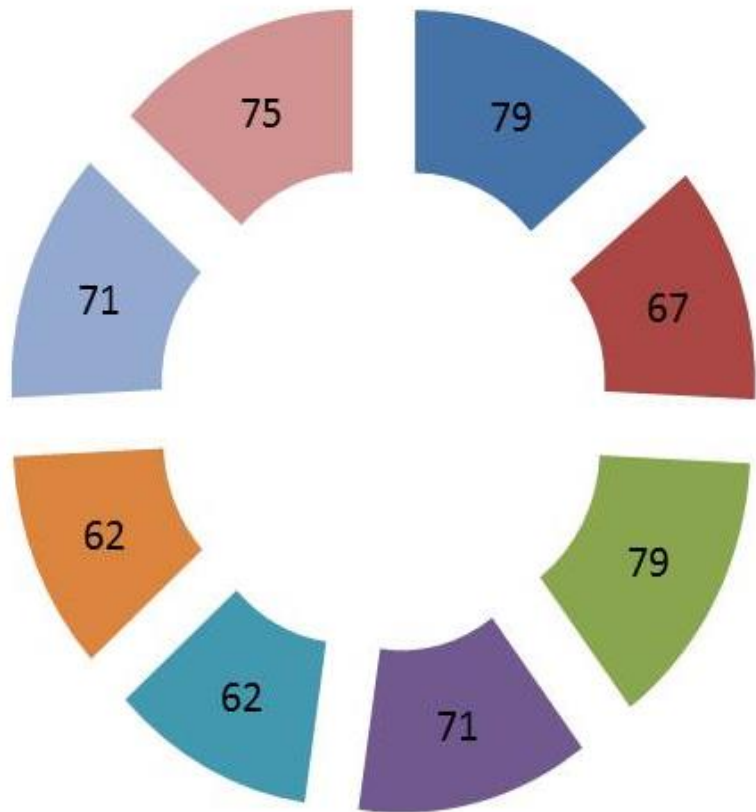
Percent of Partners



Goal #5 - 2013 Dayton NPA Dashboard

Improve data availability, coordination & utilization, and use of research and evaluation

Percent of Partners



- Collect demographic or health data
- Ensure availability of data by race
- Participate in community-based research & action
- Participate in comm-based intervention
- Invest in community-based research and evaluation
- Support/improve evidence-based practice, research
- Participate in academic collaborations
- Use/enhance research and evaluation-based knowledge

2013 Dayton NPA Dashboard

2013 ORGANIZATIONAL PROFILES IN DAYTON AND MONTGOMERY COUNTY, OHIO



Overall Result: Local organizations in Montgomery County still have some improvements to make in order to meet Goals 1 – 5 on a community level.



***PLEASE TAKE THE SURVEY at
<http://www.surveymonkey.com/s/NPA2014>:***



We ask all local organizations to complete the survey to enhance the community benchmark. Feel free to share the web link with your partners.

**Dayton Council
on Health Equity**

Organizations will receive an individual summary report. A Community Benchmark and Dashboard Report will also be made available online at www.phdmc.org/dche.

2013 Dayton NPA Dashboard



2013 ORGANIZATIONAL PROFILES IN DAYTON AND MONTGOMERY COUNTY, OHIO



Thank you for joining in our community's efforts to improve population health, eliminate health disparities and advance health equity.



Public Health
Prevent. Promote. Protect.
Dayton & Montgomery County

To arrange a consultation on the survey or training in particular focus area within the survey, feel free to contact:

**Dayton Council
on Health Equity**

**Cheryl Scroggins, Coordinator
Dayton Council on Health Equity
Public Health - Dayton & Montgomery County
Office: (937) 225-4962
E-mail: cscroggins@phdmc.org**

Public Health-Dayton & Montgomery County **Dayton Council on Health Equity**

2013 DASHBOARD REPORT NPA CHECKLIST SURVEY

For questions or comments, please contact:

Cheryl Scroggins, Program Coordinator

117 South Main Street

Dayton, OH 45422-1280

O: (937) 225-4962

F: (937) 496-3071

E-mail: cscroggins@phdmc.org

Web page: www.phdmc.org/dche



**Dayton Council
on Health Equity**

